

INDIGO — SANLORENZO



Builder: SANLORENZO

Year Built: 2012

Model: Flybridge

Price: €4,000,000 EUR

Location: Thailand

LOA: 102' (31.07mm)

Beam: 23.29

Max Draft: 8' 9" (2.65mm)

Cruise Speed: 25 Knots Kts. (29 MPH)

Max Speed: 29 Knots Kts. (33 MPH)

Our experienced yacht broker, Andrey Shestakov, will help you choose and buy a yacht that best suits your needs **Indigo — SANLORENZO** from our catalogue. Presently, at Shestakov Yacht Sales Inc., we have a wide variety of yachts available on our sale's list. We also work in close contact with all the big yacht manufacturers from all over the world.

If you would like to buy a yacht **Indigo — SANLORENZO** or would like help answering any questions concerning purchasing, selling or chartering a yacht, please call **+1(954)274-4435**

TABLE OF CONTENTS

TABLE OF CONTENTS	2
SPECIFICATIONS	4
Overview	4
Basic Information	4
Dimensions	4
Speed, Capacities and Weight	4
Accommodations	4
Hull and Deck Information	5
Engine Information	5
PHOTOS	6
Sanlorenzo SL104	6
Sanlorenzo SL104	6
Sanlorenzo SL104	6
Sanlorenzo SL104	6
Sanlorenzo SL104	6
Sanlorenzo SL104	6
Sanlorenzo SL104	7
Sanlorenzo SL104	7
Sanlorenzo SL104	7
Sanlorenzo SL104	7
Sanlorenzo SL104	7
Sanlorenzo SL104	7
Sanlorenzo SL104	7
Sanlorenzo SL104	8
Sanlorenzo SL104	8
Sanlorenzo SL104	8
CONTACTS	9
Contact details	9
Telephones	9

Office hours

9

Address

9

SPECIFICATIONS

Overview

Sanlorenzo SL104 was cruising in the waters of Southeast Asia. The vessel has never changed its ownership. The yacht is in mint condition and well-specked. The classic exterior remains relevant for many years, as do the elegant interiors created by Francesco Paszkowski. The yacht has a four-cabin layout. The master suite is located on the main deck, and three guest cabins are located on the lower deck. In addition to cozy interior spaces, the yacht offers many outdoor decks for relaxation and socializing, including a sundeck with a Jacuzzi. The maximum speed of the yacht reaches 29 knots, cruising speed is 25 knots. This yacht represents an excellent opportunity to purchase a well-maintained Sanlorenzo on the brokerage market in Asia.

Basic Information

Category: Flybridge

Sub Category: Flybridge

Model Year: 2012

Year Built: 2012

Country: Thailand

Dimensions

LOA: 102' (31.07mm)

Beam: 23.29

Max Draft: 8' 9" (2.65mm)

Speed, Capacities and Weight

Cruise Speed: 25 Knots Kts. (29 MPH)

Max Speed: 29 Knots Kts. (33 MPH)

Fuel Capacity: 3170.06 Gal Gallons

Accommodations

Total Cabins: 4

Total Heads: 5

Hull and Deck Information

Hull Material: GRP

Exterior Designer: Francesco Paskowski

Interior Designer: Sanlorenzo

Engine Information

Engines: 2

Manufacturer: MTU

Engine Type: Inboard

Fuel Type: Diesel

PHOTOS

Sanlorenzo SL104



Sanlorenzo SL104



Sanlorenzo SL104



Sanlorenzo SL104



Sanlorenzo SL104



Sanlorenzo SL104



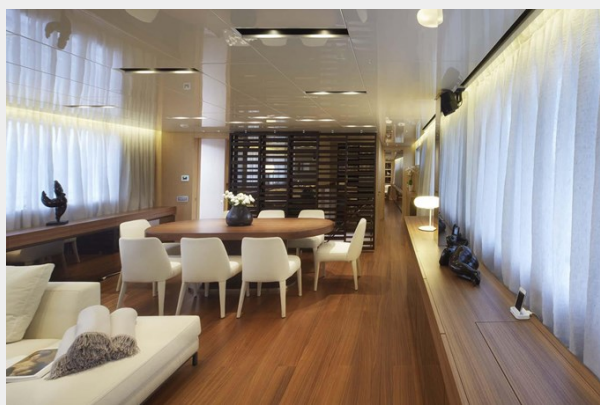
Sanlorenzo SL104



Sanlorenzo SL104



Sanlorenzo SL104



Sanlorenzo SL104



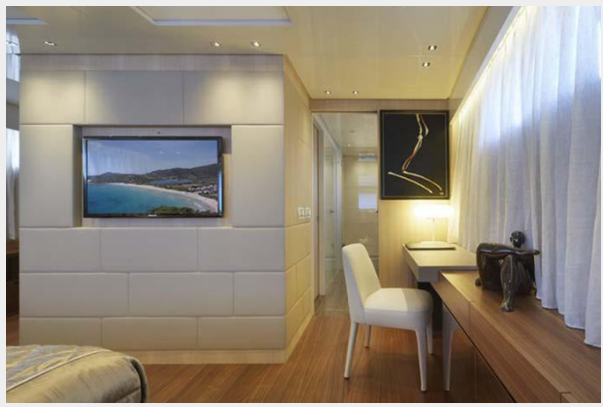
Sanlorenzo SL104



Sanlorenzo SL104



Sanlorenzo SL104



Sanlorenzo SL104



Sanlorenzo SL104



CONTACTS

Andrey Shestakov, leading yacht broker of the sales department of Shestakov Yacht Sales Inc. Shestakov Yacht Sales Inc., the official representative of the Miami/Fort Lauderdale FL headquarters.

Contact details

Email: andrey@shestakovyachtsales.com

Web: shestakovyachtsales.com/en/

Telephones

USA: +1(954)274-4435

Office hours

Monday – Saturday: **9:00 - 21:00** EDT

Sunday: **closed**

Address



Harbour Towne Marina, 850 NE 3rd St,
STE 213, Dania, FL 33004