

NIGHT TRAIN — HINCKLEY



Builder: HINCKLEY

Year Built: 1986

Model: Sloop

Price: \$595,000 USD

Location: United States

LOA: 51' (15.54mm)

Beam: 14

Min Draft: 5' 10" (1.78mm)

Max Draft: 11' 10" (3.61mm)

Cruise Speed: 7.5 Knots Kts. (9 MPH)

Max Speed: 9 Knots Kts. (10 MPH)

Our experienced yacht broker, Andrey Shestakov, will help you choose and buy a yacht that best suits your needs **NIGHT TRAIN — HINCKLEY** from our catalogue. Presently, at Shestakov Yacht Sales Inc., we have a wide variety of yachts available on our sale's list. We also work in close contact with all the big yacht manufacturers from all over the world.

If you would like to buy a yacht **NIGHT TRAIN — HINCKLEY** or would like help answering any questions concerning purchasing, selling or chartering a yacht, please call **+1(954)274-4435**

TABLE OF CONTENTS

TABLE OF CONTENTS	2
SPECIFICATIONS	5
Overview	5
Basic Information	5
Dimensions	5
Speed, Capacities and Weight	5
Accommodations	5
Hull and Deck Information	5
Engine Information	6
PHOTOS	7
Starboard Aft	7
NIGHT TRAIN Starboard Profile	7
Cockpit	7
Helm	7
Coach House Looking Forward	8
Foredeck Port Side	8
Coach House	8
Bow looking forward	8
Bow Looking Forward	8
Gennaker Pole Support	8
Bow	9
Companionway	9
Dining Table	9
Salon	9
Salon Dining Area	10
Settee	10
Salon	10
Salon Seating Starboard	10

Salon	10
Overhead salon	10
V-berth With Guest Head to Port Side	11
V-berth	11
V-berth	11
Cabinets Forepeak	11
Guest Head	12
V-berth Storage	12
Sink in Guest Head	12
Manual Head	12
Galley looking aft	12
Galley Looking Aft	12
Galley Double Sink	13
Galley Double Sink (2)	13
Galley Storage	13
Galley Stove	13
Galley Storage Port Side	14
Companionway	14
Captain's Cabin	14
Nav Station	14
Hanging Locker	15
Nav Station	15
Owner's Cabin	15
Owner's Cabin	15
Looking into Ensuite From Owner's Cabin	16
Owner's Cabin	16
Ensuite VacuFlush Head	16
Sink in Ensuite	16
Foredeck	16

Foredeck (2)	16
Foredeck	17
Bow	17
Port bow	17
Port Side	17
Port Side Close Up	18
Transom	18
Transom	18
Transom	18
CONTACTS	19
Contact details	19
Telephones	19
Office hours	19
Address	19

SPECIFICATIONS

Overview

NIGHT TRAIN is a 1986 Hinckley SW 51 sailing yacht with 3 staterooms which can accommodate up to 5 guests, a spacious and well-designed cockpit, and a beautifully crafted interior finished in teak. With its nonskid deck and fresh exterior paint, she is ready to sail away immediately.

Basic Information

Category: Sloop

Model Year: 1986

Year Built: 1986

Country: United States

Dimensions

LOA: 51' (15.54mm)

Beam: 14

Min Draft: 5' 10" (1.78mm)

Max Draft: 11' 10" (3.61mm)

Speed, Capacities and Weight

Cruise Speed: 7.5 Knots Kts. (9 MPH)

Max Speed: 9 Knots Kts. (10 MPH)

Water Capacity: 200 Gallons

Fuel Capacity: 120 Gal Gallons

Accommodations

Total Cabins: 3

Total Heads: 2

Hull and Deck Information

Hull Material: GRP

Engine Information

Engines: 1

Manufacturer: Westerbeke

Engine Type: Inboard

PHOTOS

NIGHT TRAIN Starboard Profile



Starboard Aft



Cockpit



Helm



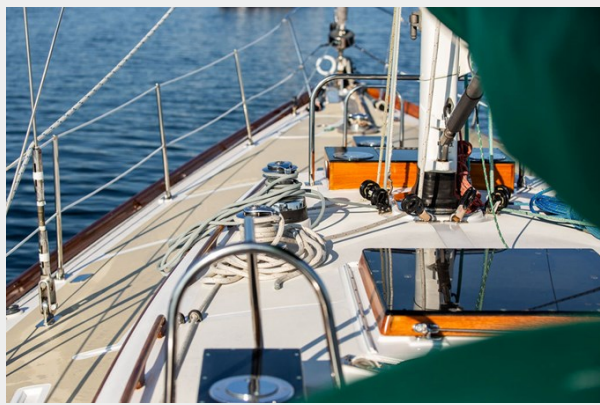
Coach House Looking Forward



Foredeck Port Side



Coach House



Bow looking forward



Bow Looking Forward



Gennaker Pole Support



Bow



Companionway



Dining Table



Salon



Salon Dining Area



Settee



Salon



Salon Seating Starboard



Salon



Overhead salon



V-berth With Guest Head to Port Side



V-berth



V-berth



Cabinets Forepeak



V-berth Storage



Guest Head



Sink in Guest Head



Manual Head



Galley looking aft



Galley Looking Aft



Galley Double Sink



Galley Double Sink (2)



Galley Stove



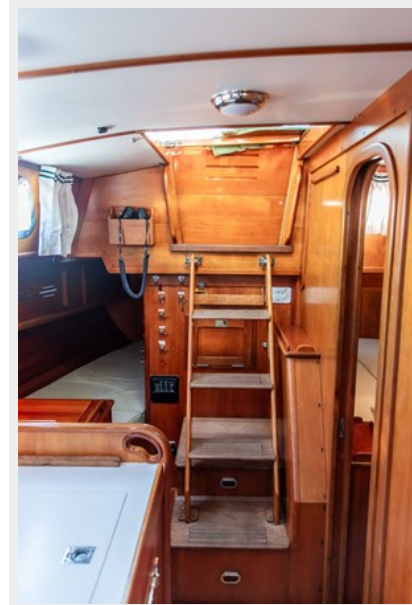
Galley Storage



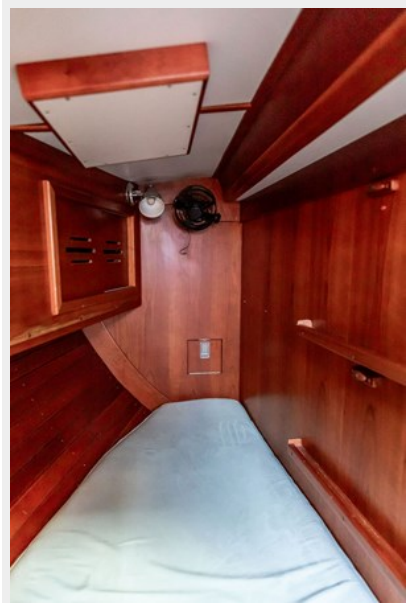
Galley Storage Port Side



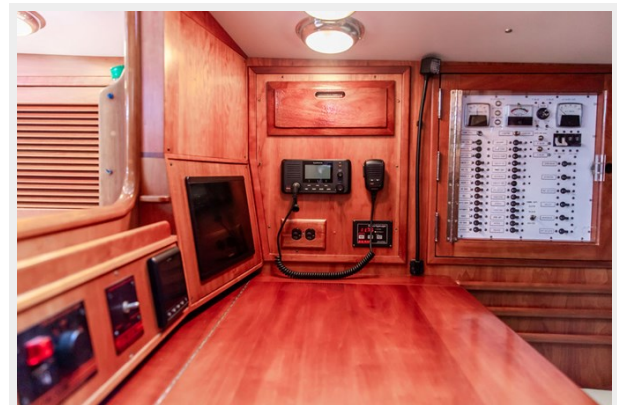
Companionway



Captain's Cabin



Nav Station



Nav Station



Hanging Locker



Owner's Cabin

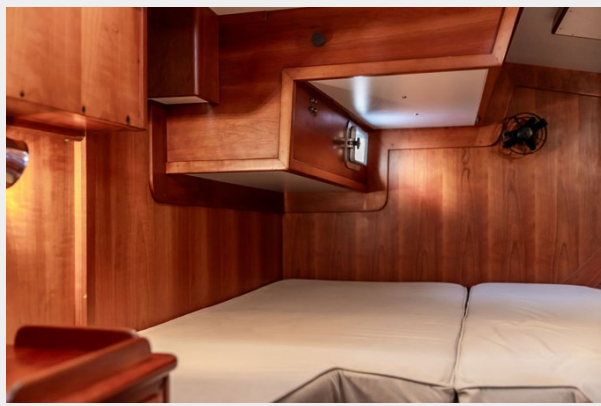


Owner's Cabin



Looking into Ensuite From Owner's Cabin

Owner's Cabin



Ensuite VacuFlush Head



Sink in Ensuite



Foredeck



Foredeck (2)



Foredeck



Bow



Port bow



Port Side



Port Side Close Up



Transom



Transom



Transom



CONTACTS

Andrey Shestakov, leading yacht broker of the sales department of Shestakov Yacht Sales Inc. Shestakov Yacht Sales Inc., the official representative of the Miami/Fort Lauderdale FL headquarters.

Contact details

Email: andrey@shestakovyachtsales.com

Web: shestakovyachtsales.com/en/

Telephones

USA: +1(954)274-4435

Office hours

Monday – Saturday: **9:00 - 21:00** EDT

Sunday: **closed**

Address



Harbour Towne Marina, 850 NE 3rd St,
STE 213, Dania, FL 33004