

EMERALD — FEADSHIP



Builder: FEADSHIP

Year Built: 1990

Model: Displacement

Price: €25,000,000 EUR

Location: France

LOA: 165' 5" (50.4mm)

Beam: 26.83

Max Draft: 8' 11" (2.7mm)

Cruise Speed: 11 Knots Kts. (13 MPH)

Max Speed: 14 Knots Kts. (16 MPH)

Our experienced yacht broker, Andrey Shestakov, will help you choose and buy a yacht that best suits your needs **EMERALD — FEADSHIP** from our catalogue. Presently, at Shestakov Yacht Sales Inc., we have a wide variety of yachts available on our sale's list. We also work in close contact with all the big yacht manufacturers from all over the world.

If you would like to buy a yacht **EMERALD — FEADSHIP** or would like help answering any questions concerning purchasing, selling or chartering a yacht, please call **+1(954)274-4435**

TABLE OF CONTENTS

TABLE OF CONTENTS	2
SPECIFICATIONS	3
Overview	3
Basic Information	3
Dimensions	4
Speed, Capacities and Weight	4
Accommodations	4
Hull and Deck Information	4
Engine Information	5
PHOTOS	6
CONTACTS	18
Contact details	18
Telephones	18
Office hours	18
Address	18

SPECIFICATIONS

Overview

Originally delivered by Feadship in 1990, EMERALD has undergone an extensive rebuild since she was purchased by the current owners in 2021. EMERALD has been rebuilt to suit her European owners and their ambition to have a luxury home at sea. From the outset of the project they had clear-cut ideas of how EMERALD could be enhanced, all of which were made a reality with the help of Balk Shipyard in the Netherlands. After arriving at Balk Shipyard in October 2021 measuring 48.6 metres in length following a previous extension, EMERALD was extended further bringing her to a total LOA of 50.4 metres. Together with British studio Design Unlimited, EMERALD's owners redesigned the entire interior and opted for a modern and timeless theme. The refreshed main-deck layout features a forward-facing master and neighbouring VIP suite, while the four remaining guest suites are situated on the lower deck. The main saloon is now an open-plan design with a small partition separating the lounge and dining area. The connecting main-deck galley has benefited also from a reconfiguration and complete upgrade to commercial equipment. The bridge deck saloon was also extended as was the bridge deck cockpit where a single new crane replaces the two original cranes to manoeuvre the yacht's selection of toys in and out of the water. Once clear of equipment, this space can be used as an outdoor lounge and leisure area. The rebuilt sundeck which was also extended, now features a large spa bath forward, cosy seating area, sun beds and wet bar to form the perfect space to enjoy the sun. On the lower deck, the space taken by the original VIP cabin now allows for a class leading crew mess, laundry room, cold stores and an additional engineers cabin whilst all of the crew cabins have also been entirely refitted. As part of the rebuild, the yacht's mast and superstructure archway were both redesigned to suit the modernised superyacht and the new equipment fitted to it. Much of the equipment onboard EMERALD has been replaced with brand-new navigation systems, AV/ IT communication systems and two zero-speed Quantum extendable stabilisation fins to name just some. While those items such as the engines and generators which were new in 2015 have been fully serviced up to date. With a stunning new paint job in Orion Green for the hull and Aquila White for the superstructure, EMERALD is ready to go for years to come! EMERALD was a finalist at the 2024 Boat International World Superyacht Awards.

Basic Information

Category: Displacement

Sub Category: Displacement

Model Year: 1990

Year Built: 1990

Refit Type: Rebuild

Country: France

Dimensions

LOA: 165' 5" (50.4mm)

Beam: 26.83

Max Draft: 8' 11" (2.7mm)

Speed, Capacities and Weight

Cruise Speed: 11 Knots Kts. (13 MPH)

Cruise Speed Range: 6200

Max Speed: 14 Knots Kts. (16 MPH)

Gross Tonnage: 478 Pounds

Water Capacity: 18420 Gallons

Holding Tank: 2570.39 Gal Gallons

Fuel Capacity: 14080.37 Gal Gallons

Accommodations

Total Cabins: 6

Sleeps: 12

Total Heads: 2

Crew Cabin: 10

Crew Berths: 6

Crew Heads: 6

Hull and Deck Information

Hull Material: Steel

Deck Material: Teak

Hull Configuration: Full Displacement

Hull Color: Jotun Megagloss HG Orion
Green

Hull Designer: De Voogt Naval Architects

Exterior Designer: De Voogt Naval
Architects

Interior Designer: Design Unlimited

Engine Information

Engines: 2

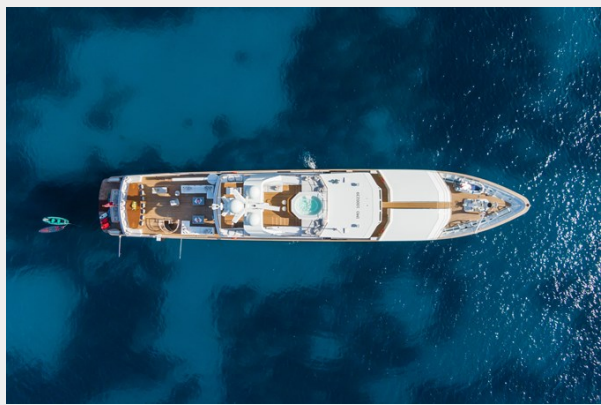
Manufacturer: CAT

Fuel Type: Diesel

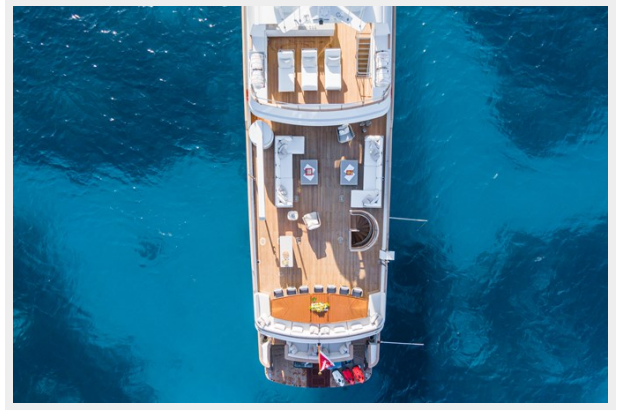
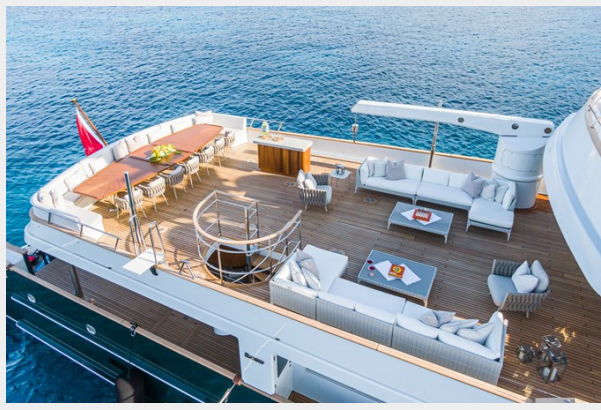
PHOTOS

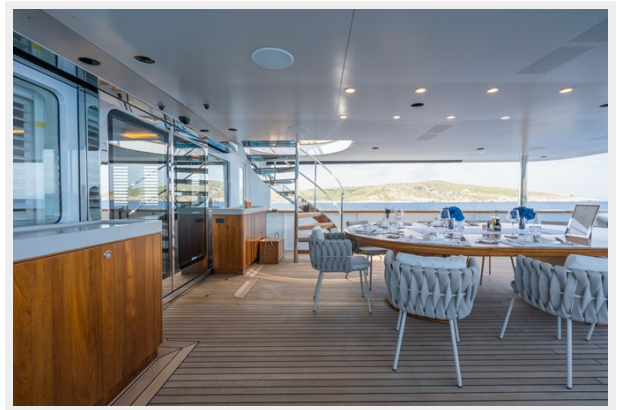


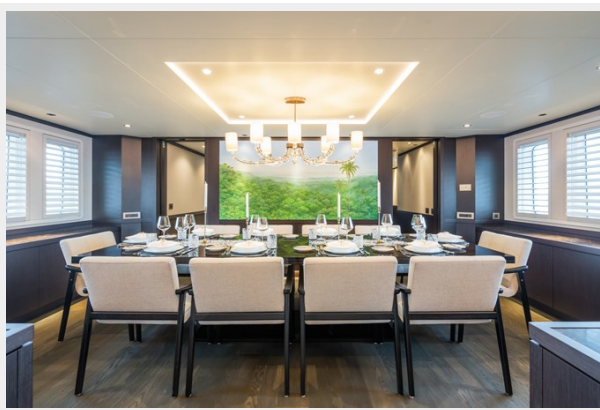
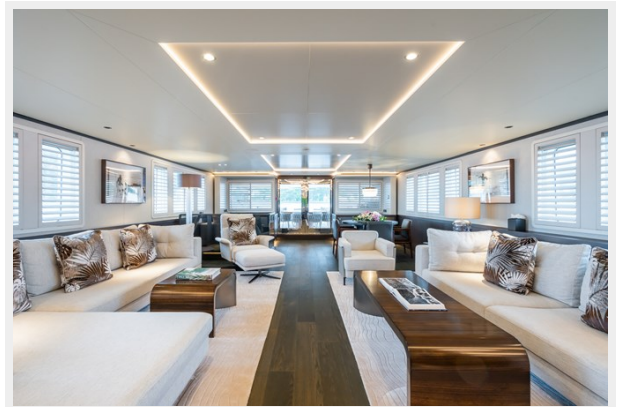


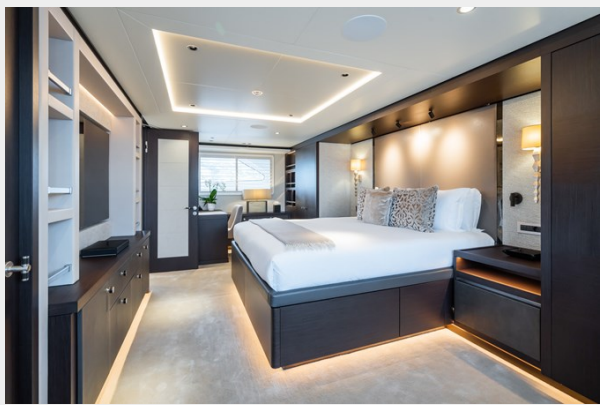
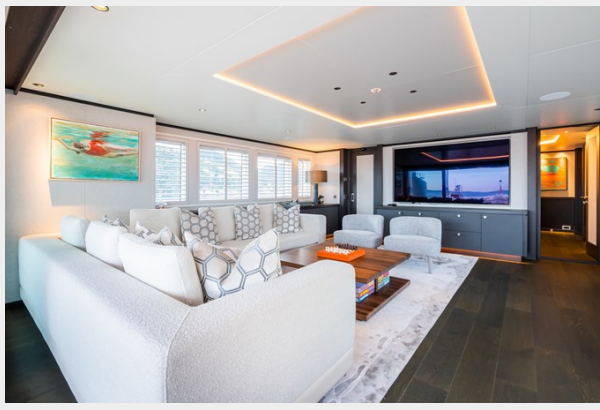


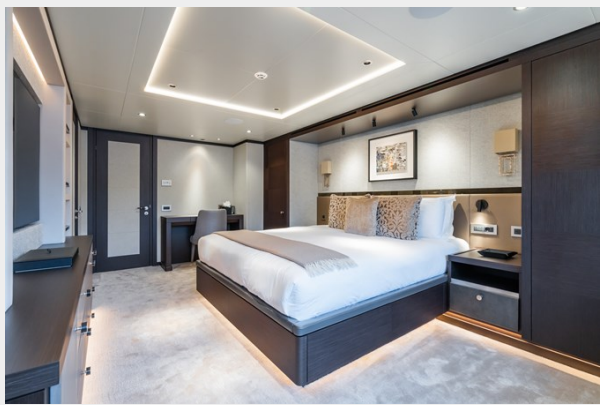


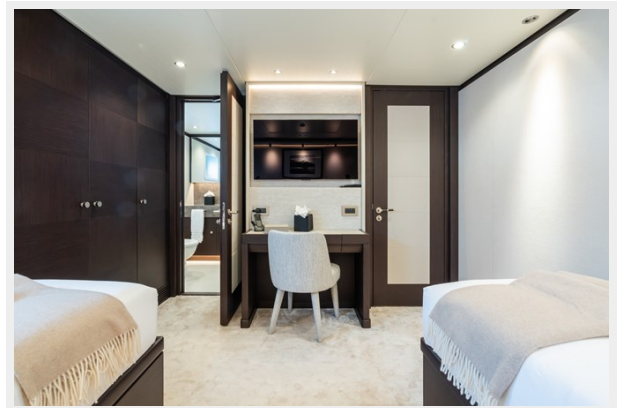
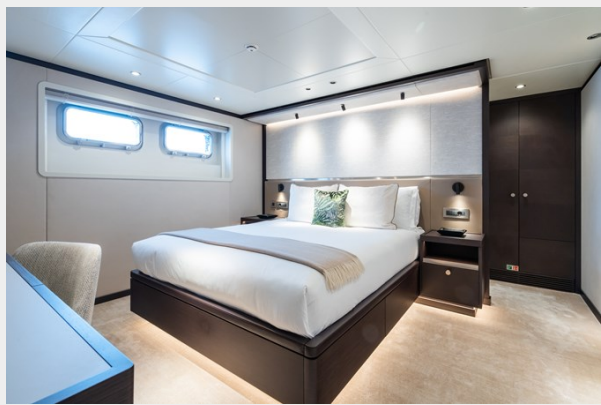
















CONTACTS

Andrey Shestakov, leading yacht broker of the sales department of Shestakov Yacht Sales Inc. Shestakov Yacht Sales Inc., the official representative of the Miami/Fort Lauderdale FL headquarters.

Contact details

Email: andrey@shestakovyachtsales.com

Web: shestakovyachtsales.com/en/

Telephones

USA: +1(954)274-4435

Office hours

Monday – Saturday: **9:00 - 21:00** EDT

Sunday: **closed**

Address



Harbour Towne Marina, 850 NE 3rd St,
STE 213, Dania, FL 33004