

SOLESHINE — DEAN CATAMARANS



Builder: DEAN CATAMARANS

Year Built: 1992

Model: Catamaran

Price: \$138,000 USD

Location: United States

LOA: 36' (10.97mm)

Beam: 18.14

Min Draft: 3' (0.91mm)

Max Draft: 6' (1.83mm)

Cruise Speed: 6 Knots Kts. (7 MPH)

Max Speed: 11 Knots Kts. (13 MPH)

Our experienced yacht broker, Andrey Shestakov, will help you choose and buy a yacht that best suits your needs **Soleshine — DEAN CATAMARANS** from **our catalogue**. Presently, at **Shestakov Yacht Sales Inc.**, we have a wide variety of yachts available on **our sale's list**. We also work in close contact with all the big **yacht manufacturers** from all over the world.

If you would like to buy a yacht **Soleshine — DEAN CATAMARANS** or would like help answering any questions concerning purchasing, selling or chartering a yacht, please call **+1(954)274-4435**

TABLE OF CONTENTS

TABLE OF CONTENTS	2
SPECIFICATIONS	6
Overview	6
Basic Information	6
Dimensions	6
Speed, Capacities and Weight	6
Accommodations	6
Hull and Deck Information	7
Engine Information	7
PHOTOS	8
1-IMG_3181	8
2-IMG_3192	8
3-IMG_3193	8
4-IMG_3820	8
5-IMG_7560	9
6-IMG_7562	9
7-IMG_3897	9
8-IMG_3898	9
9-IMG_4020	10
10-IMG_7648	10
11-IMG_6757	10
12-IMG_4079	10
13-IMG_4097	11
14-IMG_4099	11
15-IMG_4100	11
16-IMG_4557	11
17-IMG_4651	12
18-IMG_4942	12

19-IMG_5200	12
20-IMG_5490	12
23-IMG_0068	13
22-dji_fly_20240326_115836_378_1711469138413_photo	13
24-IMG_0071	13
25-IMG_0073	13
26-IMG_0074	13
27-IMG_0075	13
28-IMG_0088	14
29-IMG_0092	14
30-IMG_0093	14
31-IMG_0094	14
32-IMG_0097	15
33-IMG_0098	15
34-IMG_0101	15
35-IMG_0104	15
36-IMG_0106	16
37-IMG_0107	16
39-IMG_0109	16
38-IMG_0108	16
40-IMG_0110	17
41-IMG_0115	17
42-IMG_0117	17
43-IMG_0128	17
44-IMG_0133	18
45-IMG_0135	18
46-IMG_0136	18
47-IMG_0137	18
48-IMG_0147	19

49-IMG_0149	19
50-IMG_0151	19
51-IMG_0154	19
52-IMG_0155	20
53-IMG_0157	20
55-IMG_0160	20
54-IMG_0159	20
57-IMG_0166	21
56-IMG_0165	21
58-IMG_0167	21
59-IMG_0171	21
60-IMG_0173	22
61-IMG_0176	22
62-IMG_0178	22
63-IMG_8296	22
65-IMG_0180	22
64-IMG_8297	22
66-IMG_0181	23
67-IMG_0182	23
68-IMG_0183	23
69-IMG_0184	23
70-IMG_0186	23
71-IMG_0187	23
72-IMG_0189	24
73-IMG_0191	24
74-IMG_0193	24
75-IMG_0194	24
76-IMG_0195	25
77-IMG_0200	25

78-IMG_0202	25
79-IMG_0203	25
81-IMG_0207	26
80-IMG_0206	26
82-IMG_0208	26
83-IMG_0210	26
84-IMG_0214	27
85-IMG_0215	27
86-IMG_0216	27
87-IMG_0217	27
88-IMG_0218	28
89-IMG_0219	28
CONTACTS	29
Contact details	29
Telephones	29
Office hours	29
Address	29

SPECIFICATIONS

Overview

SOLESHINE Completely Update finished in 2023 in South Texas. Just sailed in for Hurricane Storage in Southeast Ga From a year cruising the Bahamas . Owners are going to Upgrade next year to a larger Vessel.

Basic Information

Category: Catamaran

Model Year: 1992

Year Built: 1992

Country: United States

Dimensions

LOA: 36' (10.97mm)

Beam: 18.14

Min Draft: 3' (0.91mm)

Max Draft: 6' (1.83mm)

Speed, Capacities and Weight

Cruise Speed: 6 Knots Kts. (7 MPH)

Cruise Speed Range: 576

Max Speed: 11 Knots Kts. (13 MPH)

Max Speed Range: 389 Kts.

Gross Tonnage: 8 Pounds

Water Capacity: 105 Gallons

Holding Tank: 33 Gal Gallons

Fuel Capacity: 79 Gal Gallons

Accommodations

Total Cabins: 4

Total Berths: 8

Sleeps: 8

Total Heads: 2

Hull and Deck Information

Hull Material: Fiberglass

Deck Material: Fiberglass

Hull Designer: Peter Dean

Interior Designer: Peter Dean

Engine Information

Engines: 2

Manufacturer: Yanmar

Fuel Type: Diesel

PHOTOS

1-IMG_3181



2-IMG_3192



3-IMG_3193



4-IMG_3820



5-IMG_7560



6-IMG_7562



7-IMG_3897



8-IMG_3898



9-IMG_4020



10-IMG_7648



11-IMG_6757



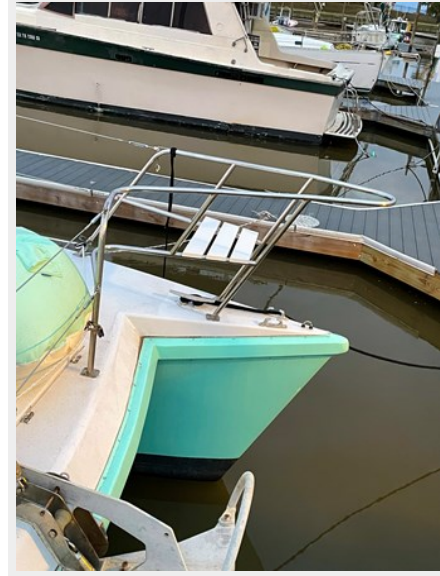
12-IMG_4079



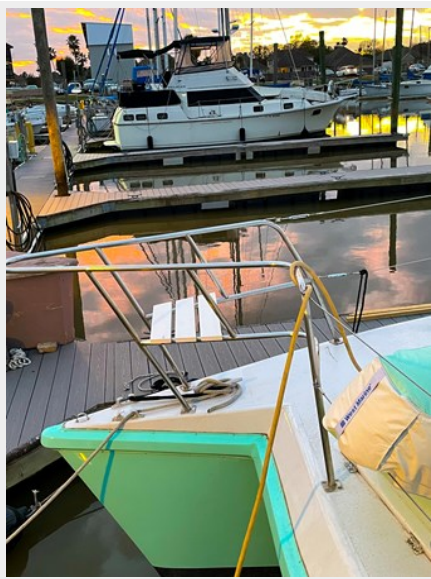
13-IMG_4097



14-IMG_4099



15-IMG_4100



16-IMG_4557



17-IMG_4651



18-IMG_4942



19-IMG_5200



20-IMG_5490



22-
dji_fly_20240326_115836_378_1711469138413_photo



23-IMG_0068



24-IMG_0071



25-IMG_0073



26-IMG_0074



27-IMG_0075



28-IMG_0088



29-IMG_0092



30-IMG_0093



31-IMG_0094



32-IMG_0097



33-IMG_0098



34-IMG_0101



35-IMG_0104



36-IMG_0106



37-IMG_0107



39-IMG_0109



38-IMG_0108



40-IMG_0110



41-IMG_0115



42-IMG_0117



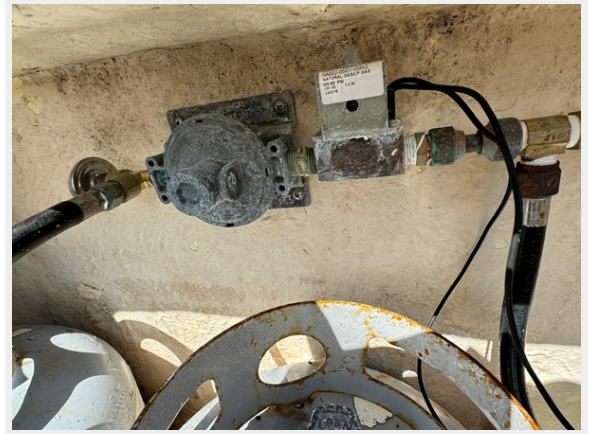
43-IMG_0128



44-IMG_0133



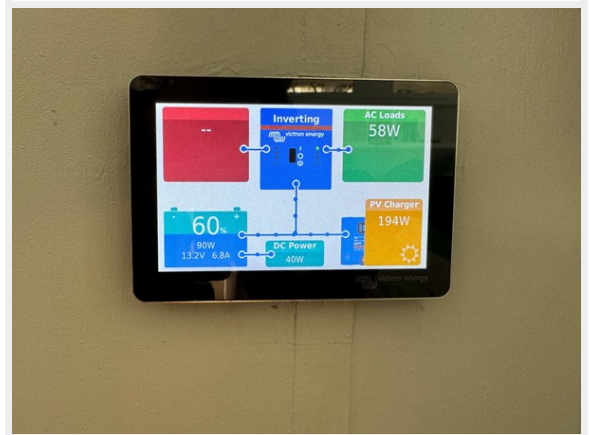
45-IMG_0135



46-IMG_0136



47-IMG_0137



48-IMG_0147



49-IMG_0149



50-IMG_0151



51-IMG_0154



52-IMG_0155



53-IMG_0157



54-IMG_0159



55-IMG_0160



56-IMG_0165



57-IMG_0166



58-IMG_0167



59-IMG_0171



60-IMG_0173



61-IMG_0176



62-IMG_0178



63-IMG_8296

Oil Filters
 Current Engine Hours: 17,500 hrs | 15,200 hrs | 15,200 hrs
 Change Oil Filters Every: 100 hours | 100 hours | 100 hours
 P Filter 1 Type and Part No.: | P Filter 2 Type and Part No.:
 Engine Oil Type: 15W40 | Oil Filter 1 Type and Part No.: | Oil Filter 2 Type and Part No.:
 Gallons/Liters Required for Full Oil Change: 4 1/2 gallons per engine

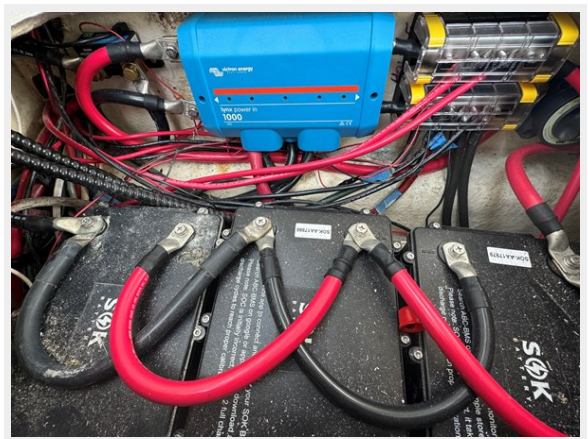
Date	Engine Hours	Oil Change	Oil Type	Oil Level	Gallons/Liters	Oil Filter	Spice	Total Cost	Notes
11/10/24	288	X	15W40	F	5/1.5	X	Yes		
2/25/24	385	X	15W40	F	5/1.5	X	Yes		
2/29/24	385	X	15W40	F	5/1.5	X	Yes		
3/27/24	325	485	X	F	5/1.5	X	Yes		
5/22/24	555	605	X	F	5/1.5	X	Yes		Changed for storage

64-IMG_8297

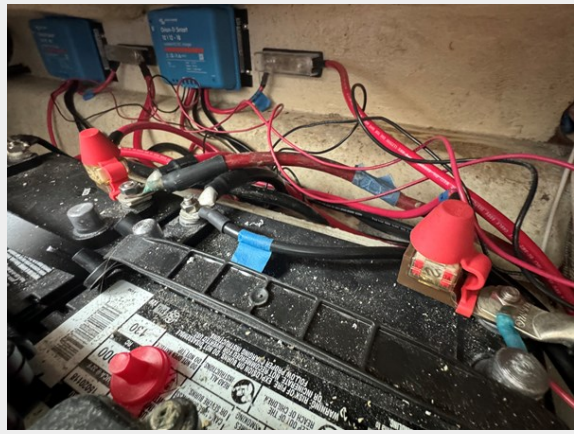
Fuel Filters/ Water Separators
 Current Engine Hours: 17,500 hrs | 15,200 hrs | 15,200 hrs
 Change/Check Filters Every: 250 hours | 250 hours | 250 hours
 Fuel Filter 1 Type and Part No.: | Fuel Filter 2 Type and Part No.:
 Fuel Filter 3 Type and Part No.: | Fuel Filter 4 Type and Part No.:
 Fuel Filter 5 Type and Part No.: | Fuel Filter 6 Type and Part No.:
 Fuel Filter 7 Type and Part No.: | Fuel Filter 8 Type and Part No.:
 Fuel Filter 9 Type and Part No.: | Fuel Filter 10 Type and Part No.:
 Fuel Filter 11 Type and Part No.: | Fuel Filter 12 Type and Part No.:
 Fuel Filter 13 Type and Part No.: | Fuel Filter 14 Type and Part No.:
 Fuel Filter 15 Type and Part No.: | Fuel Filter 16 Type and Part No.:
 Fuel Filter 17 Type and Part No.: | Fuel Filter 18 Type and Part No.:
 Fuel Filter 19 Type and Part No.: | Fuel Filter 20 Type and Part No.:
 Fuel Filter 21 Type and Part No.: | Fuel Filter 22 Type and Part No.:
 Fuel Filter 23 Type and Part No.: | Fuel Filter 24 Type and Part No.:
 Fuel Filter 25 Type and Part No.: | Fuel Filter 26 Type and Part No.:
 Fuel Filter 27 Type and Part No.: | Fuel Filter 28 Type and Part No.:
 Fuel Filter 29 Type and Part No.: | Fuel Filter 30 Type and Part No.:
 Fuel Filter 31 Type and Part No.: | Fuel Filter 32 Type and Part No.:
 Fuel Filter 33 Type and Part No.: | Fuel Filter 34 Type and Part No.:
 Fuel Filter 35 Type and Part No.: | Fuel Filter 36 Type and Part No.:
 Fuel Filter 37 Type and Part No.: | Fuel Filter 38 Type and Part No.:
 Fuel Filter 39 Type and Part No.: | Fuel Filter 40 Type and Part No.:
 Fuel Filter 41 Type and Part No.: | Fuel Filter 42 Type and Part No.:
 Fuel Filter 43 Type and Part No.: | Fuel Filter 44 Type and Part No.:
 Fuel Filter 45 Type and Part No.: | Fuel Filter 46 Type and Part No.:
 Fuel Filter 47 Type and Part No.: | Fuel Filter 48 Type and Part No.:
 Fuel Filter 49 Type and Part No.: | Fuel Filter 50 Type and Part No.:
 Fuel Filter 51 Type and Part No.: | Fuel Filter 52 Type and Part No.:
 Fuel Filter 53 Type and Part No.: | Fuel Filter 54 Type and Part No.:
 Fuel Filter 55 Type and Part No.: | Fuel Filter 56 Type and Part No.:
 Fuel Filter 57 Type and Part No.: | Fuel Filter 58 Type and Part No.:
 Fuel Filter 59 Type and Part No.: | Fuel Filter 60 Type and Part No.:
 Fuel Filter 61 Type and Part No.: | Fuel Filter 62 Type and Part No.:
 Fuel Filter 63 Type and Part No.: | Fuel Filter 64 Type and Part No.:
 Fuel Filter 65 Type and Part No.: | Fuel Filter 66 Type and Part No.:
 Fuel Filter 67 Type and Part No.: | Fuel Filter 68 Type and Part No.:
 Fuel Filter 69 Type and Part No.: | Fuel Filter 70 Type and Part No.:
 Fuel Filter 71 Type and Part No.: | Fuel Filter 72 Type and Part No.:
 Fuel Filter 73 Type and Part No.: | Fuel Filter 74 Type and Part No.:
 Fuel Filter 75 Type and Part No.: | Fuel Filter 76 Type and Part No.:
 Fuel Filter 77 Type and Part No.: | Fuel Filter 78 Type and Part No.:
 Fuel Filter 79 Type and Part No.: | Fuel Filter 80 Type and Part No.:
 Fuel Filter 81 Type and Part No.: | Fuel Filter 82 Type and Part No.:
 Fuel Filter 83 Type and Part No.: | Fuel Filter 84 Type and Part No.:
 Fuel Filter 85 Type and Part No.: | Fuel Filter 86 Type and Part No.:
 Fuel Filter 87 Type and Part No.: | Fuel Filter 88 Type and Part No.:
 Fuel Filter 89 Type and Part No.: | Fuel Filter 90 Type and Part No.:
 Fuel Filter 91 Type and Part No.: | Fuel Filter 92 Type and Part No.:
 Fuel Filter 93 Type and Part No.: | Fuel Filter 94 Type and Part No.:
 Fuel Filter 95 Type and Part No.: | Fuel Filter 96 Type and Part No.:
 Fuel Filter 97 Type and Part No.: | Fuel Filter 98 Type and Part No.:
 Fuel Filter 99 Type and Part No.: | Fuel Filter 100 Type and Part No.:

Date	Engine Hours	Fuel Filter	Water Separator	Total Cost	Fuel System Location/Notes	Fuel Filter Part No.	Collection/Spill/Leak	Spicing/Change	Notes
11/10/24	50	200							
1/23/24	260	400			Revolvy, TX	X	Yes		
4/18/24	342	495			Panama, FL	X	Yes		
					George Town, Bahamas	X	Yes		

65-IMG_0180



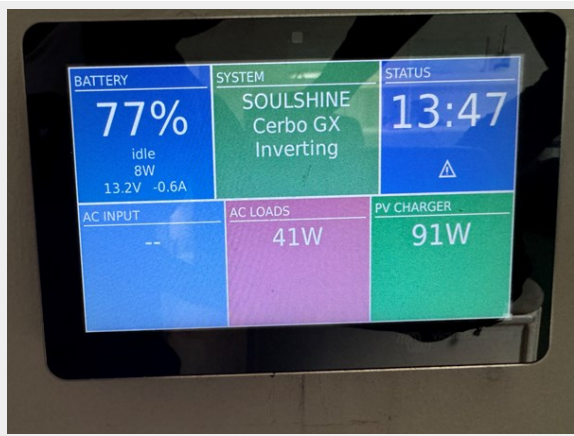
66-IMG_0181



67-IMG_0182



68-IMG_0183



69-IMG_0184



70-IMG_0186



71-IMG_0187



72-IMG_0189



73-IMG_0191



74-IMG_0193



75-IMG_0194



76-IMG_0195



77-IMG_0200



78-IMG_0202



79-IMG_0203



80-IMG_0206



81-IMG_0207



82-IMG_0208



83-IMG_0210



84-IMG_0214



85-IMG_0215



86-IMG_0216



87-IMG_0217



88-IMG_0218



89-IMG_0219



CONTACTS

Andrey Shestakov, leading yacht broker of the sales department of Shestakov Yacht Sales Inc. Shestakov Yacht Sales Inc., the official representative of the Miami/Fort Lauderdale FL headquarters.

Contact details

Email: **andrey@shestakovyachtsales.com**

Web: shestakovyachtsales.com/en/

Telephones

USA: **+1(954)274-4435**

Office hours

Monday – Saturday: **9:00 - 21:00** EDT

Sunday: **closed**

Address



Harbour Towne Marina, 850 NE 3rd St, STE 213, Dania, FL 33004