

ARAWAK — HINTERHOELLER



Builder: HINTERHOELLER

Year Built: 1989

Model: Cruising or Racing Sailboat

Price: \$54,900 USD

Location: United States

LOA: 33' 3" (10.14mm)

Beam: 12.5

Max Draft: 4' 4" (1.32mm)

Our experienced yacht broker, Andrey Shestakov, will help you choose and buy a yacht that best suits your needs **Arawak — HINTERHOELLER** from **our catalogue**. Presently, at **Shestakov Yacht Sales Inc.**, we have a wide variety of yachts available on **our sale's list**. We also work in close contact with all the big **yacht manufacturers** from all over the world.

If you would like to buy a yacht **Arawak — HINTERHOELLER** or would like help answering any questions concerning purchasing, selling or chartering a yacht, please call **+1(954)274-4435**

TABLE OF CONTENTS

TABLE OF CONTENTS	2
SPECIFICATIONS	3
Overview	3
Basic Information	3
Dimensions	3
Speed, Capacities and Weight	4
Accommodations	4
Hull and Deck Information	4
Engine Information	4
PHOTOS	5
CONTACTS	12
Contact details	12
Telephones	12
Office hours	12
Address	12

SPECIFICATIONS

Overview

Fresh Bottom Paint July 2024!!!

Arawak is an excellent example of this time proven, popular design. She has above average equipment, shows very well and has had exceptional maintenance. **Arawak** is a must see for the short handed or family cruiser buyer.

Arawak is a wonderful boat ready to go! The last two owners have taken good care of her from new sails to wiring and plumbing. All new soft goods beautifully done with top notch materials

The **Nonsuch** is the inspiration of Gordon Fisher, who with yacht designer Mark Ellis approached George Hinterhoeller to build a comfortable cruising boat. This idea has produced over 950 boats from 22' to 36' that are enjoyed today by sailors of all types.

Sail-away Condition with Tremendous extras – She is a rare open cabin model resulting in better ventilation and easy socialization. The open cabin also has a true Nav. Station. She is Shoal Draft – 4'4", which is very helpful from the Chesapeake to the Bahamas. She is easy to single hand or to manage by a couple. she is ideal for a family with young children. Interior room is equivalent to many 40 footers.

Basic Information

Category: Cruising or Racing Sailboat **Model Year:** 1989

Year Built: 1989

Country: United States

Dimensions

LOA: 33' 3" (10.14mm)

Beam: 12.5

Max Draft: 4' 4" (1.32mm)

Speed, Capacities and Weight

Water Capacity: 100 Gallons

Holding Tank: 30 Gal Gallons

Fuel Capacity: 40 Gal Gallons

Accommodations

Total Cabins: 1

Hull and Deck Information

Hull Material: Fiberglass

Deck Material: Teak

Hull Configuration: Fin & Spade

Engine Information

Engines: 1

Manufacturer: Universal

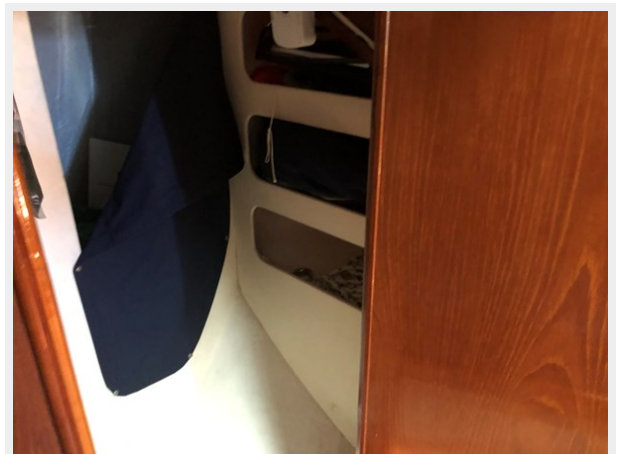
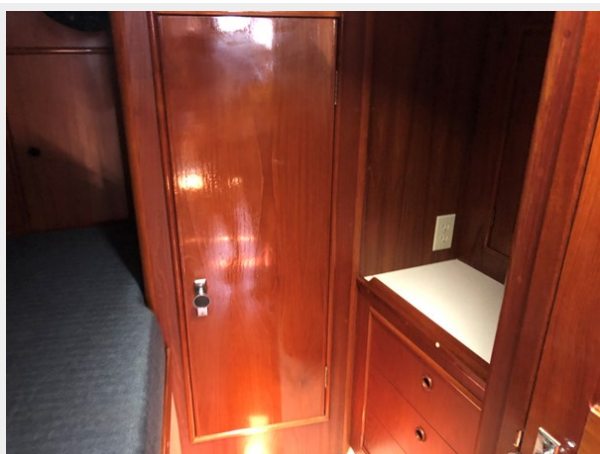
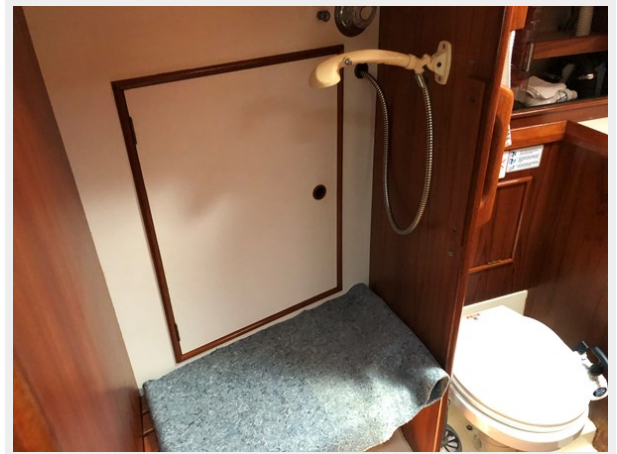
PHOTOS

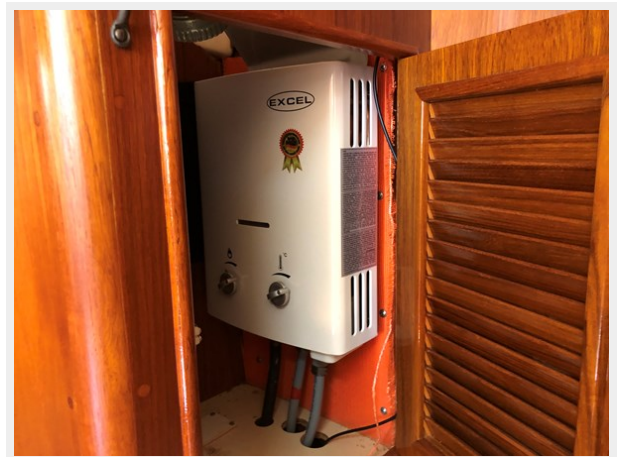
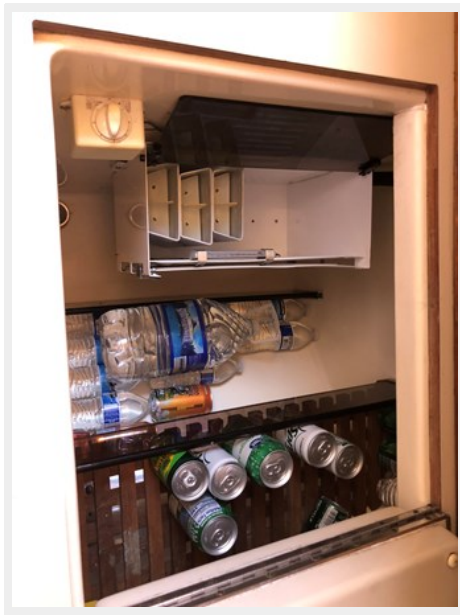














CONTACTS

Andrey Shestakov, leading yacht broker of the sales department of Shestakov Yacht Sales Inc. Shestakov Yacht Sales Inc., the official representative of the Miami/Fort Lauderdale FL headquarters.

Contact details

Email: **andrey@shestakovyachtsales.com**

Web: shestakovyachtsales.com/en/

Telephones

USA: **+1(954)274-4435**

Office hours

Monday – Saturday: **9:00 - 21:00** EDT

Sunday: **closed**

Address



Harbour Towne Marina, 850 NE 3rd St, STE 213, Dania, FL 33004