

MIDNIGHT PRINCESS — PRINCESS YACHTS



Builder: PRINCESS YACHTS

Year Built: 2013

Model: Motor Yacht

Price: £320,000 GBP

Location: Spain

LOA: 45' (13.72mm)

Beam: 13.09

Min Draft: 3' 7" (1.07mm)

Cruise Speed: 32 Knots Kts. (37 MPH)

Max Speed: 38 Knots Kts. (44 MPH)

Our experienced yacht broker, Andrey Shestakov, will help you choose and buy a yacht that best suits your needs **MIDNIGHT PRINCESS — PRINCESS YACHTS** from our catalogue. Presently, at Shestakov Yacht Sales Inc., we have a wide variety of yachts available on our sale's list. We also work in close contact with all the big yacht manufacturers from all over the world.

If you would like to buy a yacht **MIDNIGHT PRINCESS — PRINCESS YACHTS** or would like help answering any questions concerning purchasing, selling or chartering a yacht, please call **+1(954)274-4435**

TABLE OF CONTENTS

TABLE OF CONTENTS	2
SPECIFICATIONS	3
Overview	3
Basic Information	3
Dimensions	3
Speed, Capacities and Weight	3
Accommodations	4
Hull and Deck Information	4
Engine Information	4
PHOTOS	5
CONTACTS	9
Contact details	9
Telephones	9
Office hours	9
Address	9

SPECIFICATIONS

Overview

The Princess V42 was produced by UK based and internationally renowned Princess Yachts from 2013 to 2015. The Princess V42 is a 13.56 metre open sports yacht with 2 guest cabins and a draft of 1.07 meters reaching speeds of up to 38 knots. Easy manageability both in close quarters and at sea, a perfect sports package for the Mediterranean. The Princess V range is one of the best known thoroughbred hull pedigrees available, with an almost legendary combination of style, pace and agility. The hardtop incorporates a large opening sunroof and integrates seamlessly into her dynamic profile.

A spacious cockpit incorporates a tender garage which is accessed via the bathing platform for easy launch and recovery. Below deck the saloon and galley are substantial for her size and equipped with a high level of equipment. The U-shaped dinette can also convert into a double berth for additional overnight guests. Both cabins feature en-suite facilities. Unique to this example is an option to retain a highly sought after outer wall berth in Puerto Portals, either by outright purchase or lease, by separate or inclusive negotiation.

Basic Information

Category: Motor Yacht

Model Year: 2013

Year Built: 2013

Country: Spain

Dimensions

LOA: 45' (13.72mm)

Beam: 13.09

Min Draft: 3' 7" (1.07mm)

Speed, Capacities and Weight

Cruise Speed: 32 Knots Kts. (37 MPH)

Max Speed: 38 Knots Kts. (44 MPH)

Water Capacity: 332 Gallons

Fuel Capacity: 224.55 Gal Gallons

Accommodations

Total Cabins: 2

Sleeps: 4

Hull and Deck Information

Hull Material: GRP

Exterior Designer: Bernard Olesinski

Interior Designer: Bernard Olesinski

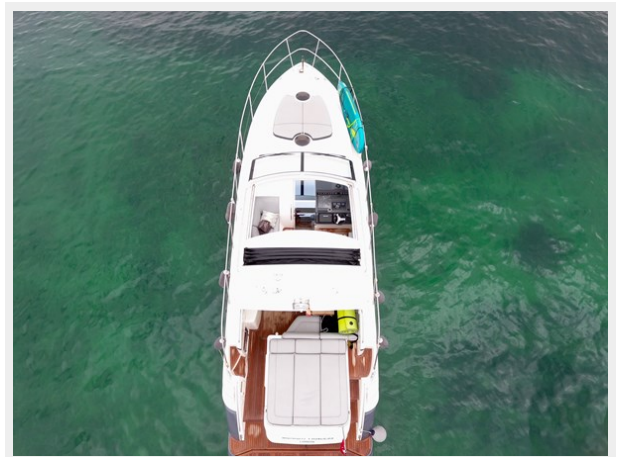
Engine Information

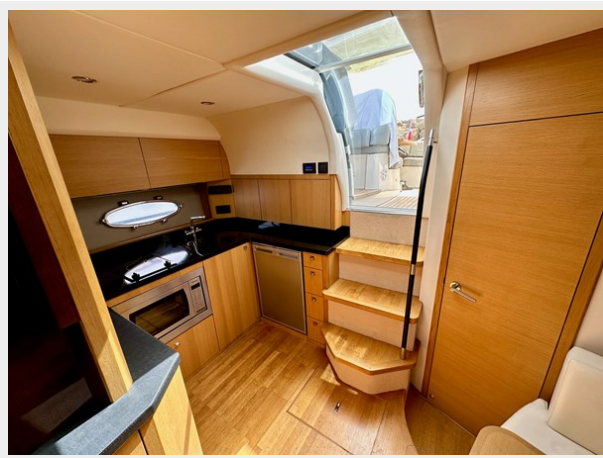
Engines: 2

Manufacturer: Volvo Penta

Fuel Type: Diesel

PHOTOS









CONTACTS

Andrey Shestakov, leading yacht broker of the sales department of Shestakov Yacht Sales Inc. Shestakov Yacht Sales Inc., the official representative of the Miami/Fort Lauderdale FL headquarters.

Contact details

Email: andrey@shestakovyachtsales.com

Web: shestakovyachtsales.com/en/

Telephones

USA: +1(954)274-4435

Office hours

Monday – Saturday: **9:00 - 21:00** EDT

Sunday: **closed**

Address



Harbour Towne Marina, 850 NE 3rd St,
STE 213, Dania, FL 33004