

MARG-A RITA — CARVER



Builder: CARVER

Year Built: 2007

Model: Aft Cabin

Price: \$284,900 USD

Location: United States

LOA: 49' 5" (15.06mm)

Beam: 14.16

Max Draft: 3' 6" (1.07mm)

Cruise Speed: 18.25 Knots Kts. (21 MPH)

Max Speed: 22.59 Knots Kts. (26 MPH)

Our experienced yacht broker, Andrey Shestakov, will help you choose and buy a yacht that best suits your needs **MARG-A RITA — CARVER** from our catalogue. Presently, at Shestakov Yacht Sales Inc., we have a wide variety of yachts available on our sale's list. We also work in close contact with all the big yacht manufacturers from all over the world.

If you would like to buy a yacht **MARG-A RITA — CARVER** or would like help answering any questions concerning purchasing, selling or chartering a yacht, please call **+1(954)274-4435**

TABLE OF CONTENTS

TABLE OF CONTENTS	2
SPECIFICATIONS	5
Overview	5
Basic Information	5
Dimensions	5
Speed, Capacities and Weight	5
Accommodations	5
Hull and Deck Information	6
Engine Information	6
PHOTOS	7
2	7
3	7
4	7
5	7
6	7
7	7
8	8
9	8
10	8
11	8
12	8
13	8
14	9
15	9
16	9
17	9
18	9
19	9

20	10
21	10
22	10
23	10
24	10
25	10
26	11
27	11
28	11
29	11
30	11
31	11
32	12
33	12
34	12
35	12
36	12
37	12
38	13
39	13
40	13
41	13
42	13
43	13
44	14
45	14
CONTACTS	15
Contact details	15
Telephones	15

Office hours	15
Address	15

SPECIFICATIONS

Overview

If you are in the market for a spacious diesel powered Aft Cabin Motor Yacht loaded with options then this is the boat for you. This vessel can be a great coastal cruiser or luxurious floating condo. A few key options include a full hardtop with enclosed canvas, hydraulic swim platform, washer / dryer combo, bow and stern thrusters, 4 AC units, 4 TV's and updated electronics. Call today and start making your cruising plans.

Basic Information

Category: Aft Cabin

Sub Category: Aft Cabin

Model Year: 2007

Year Built: 2007

Country: United States

Dimensions

LOA: 49' 5" (15.06mm)

Beam: 14.16

Max Draft: 3' 6" (1.07mm)

Speed, Capacities and Weight

Cruise Speed: 18.25 Knots Kts. (21 MPH)

Max Speed: 22.59 Knots Kts. (26 MPH)

Water Capacity: 90 Gallons

Holding Tank: 75 Gal Gallons

Fuel Capacity: 500 Gal Gallons

Accommodations

Total Cabins: 2

Total Heads: 2

Hull and Deck Information

Hull Material: Fiberglass

Engine Information

Engines: 2

Manufacturer: Volvo Penta

Engine Type: Inboard

Fuel Type: Diesel

PHOTOS

2



3



4



5



6



7



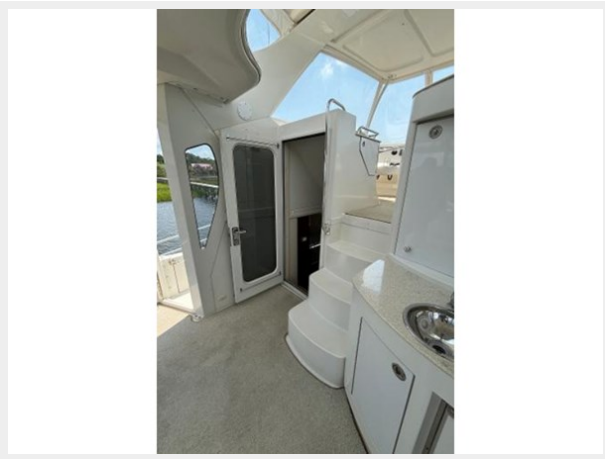
8



9



10



11



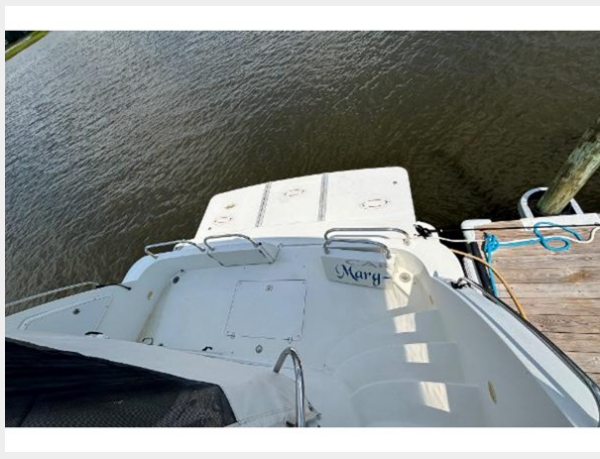
12



13



14



15



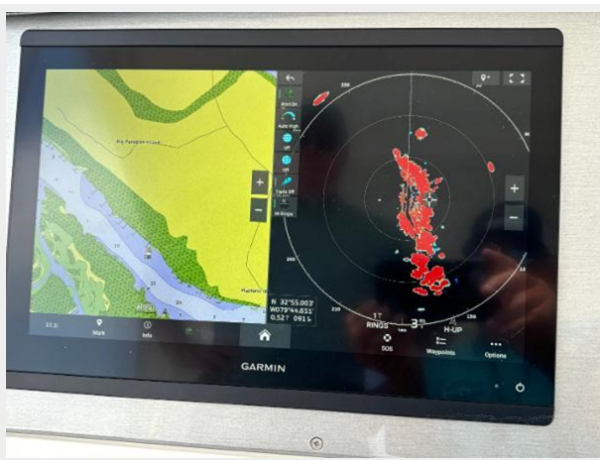
16



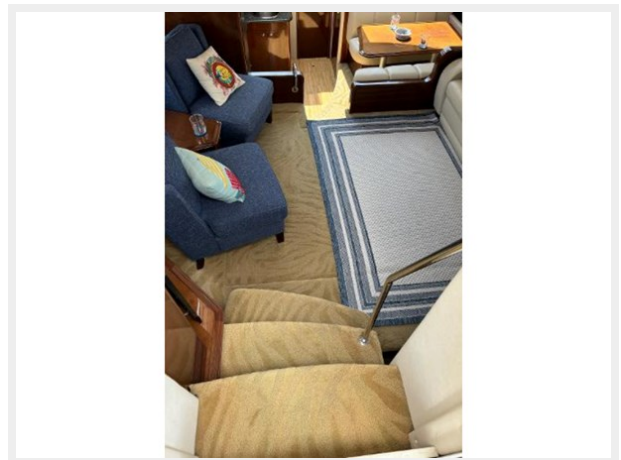
17



18



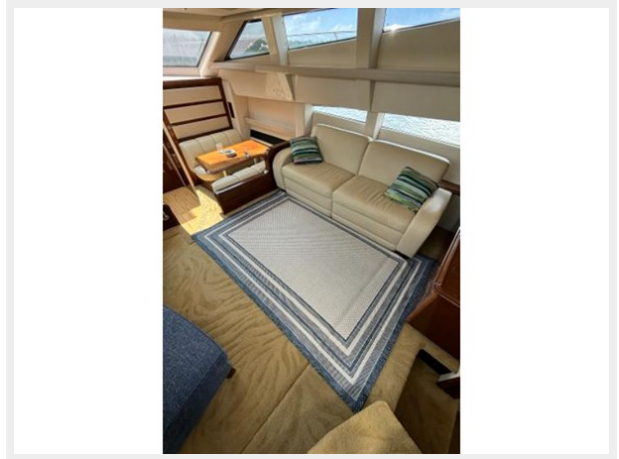
19



20



21



22



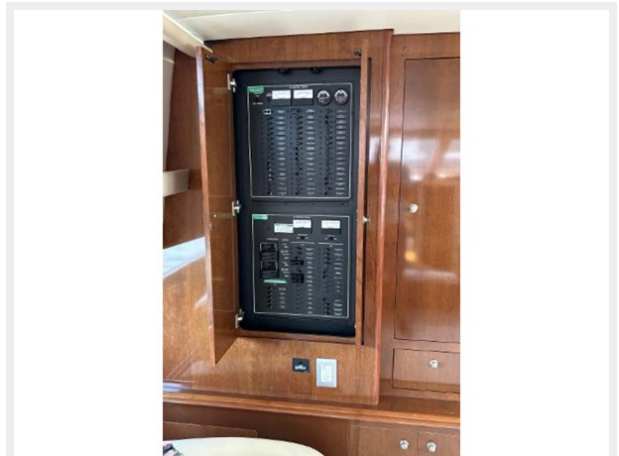
23



24



25



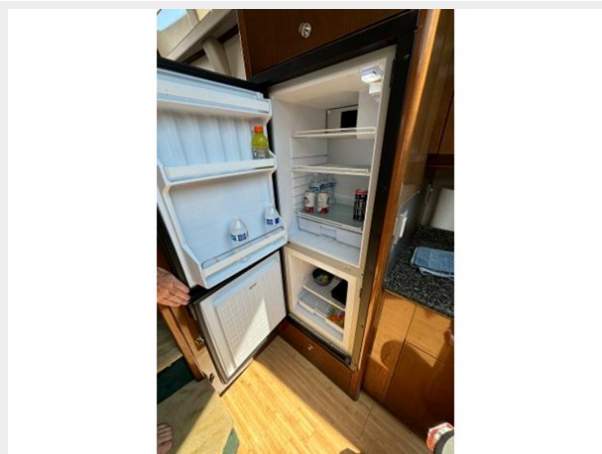
26



27



28



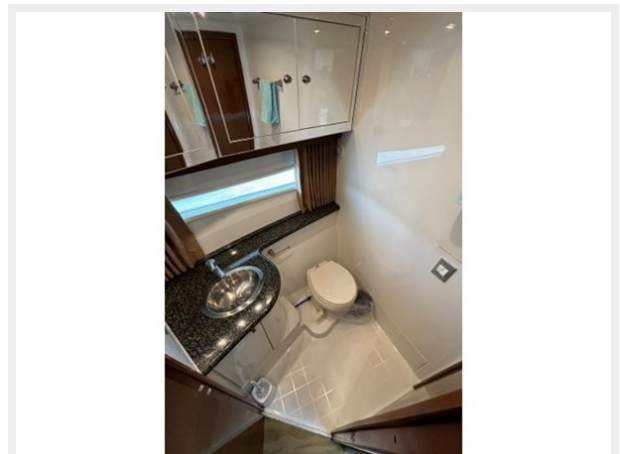
29



30



31



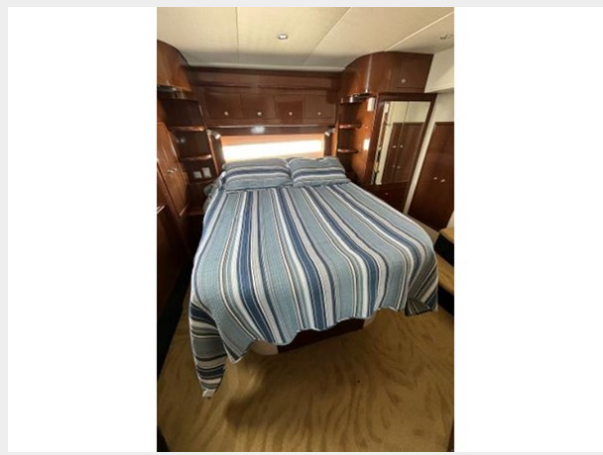
32



33



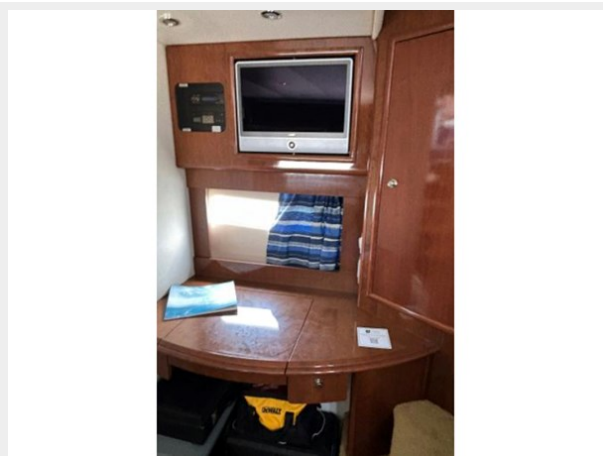
34



35



36



37



38



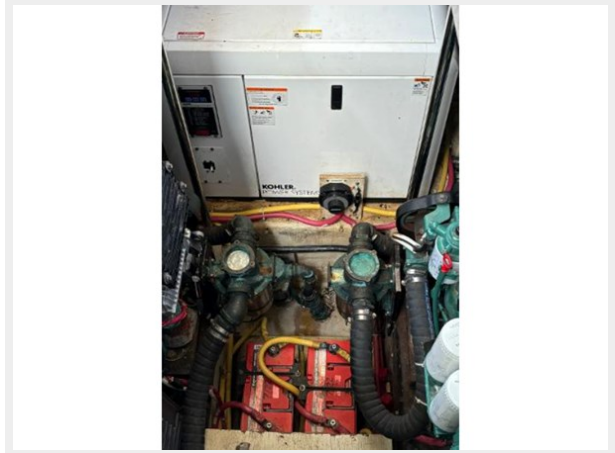
39



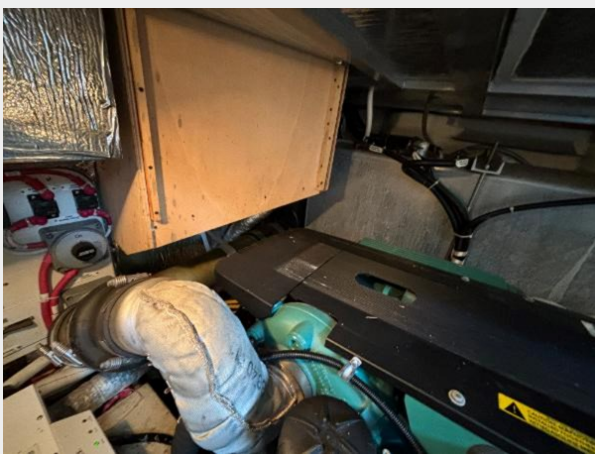
40



41



42



43



44



45



CONTACTS

Andrey Shestakov, leading yacht broker of the sales department of Shestakov Yacht Sales Inc. Shestakov Yacht Sales Inc., the official representative of the Miami/Fort Lauderdale FL headquarters.

Contact details

Email: andrey@shestakovyachtsales.com

Web: shestakovyachtsales.com/en/

Telephones

USA: +1(954)274-4435

Office hours

Monday – Saturday: **9:00 - 21:00** EDT

Sunday: **closed**

Address



Harbour Towne Marina, 850 NE 3rd St,
STE 213, Dania, FL 33004