

GRACE — NORDLUND



Builder: NORDLUND

Year Built: 1994

Model: Raised Pilothouse

Price: \$1,995,000 USD

Location: United States

LOA: 96' (29.26mm)

Beam: 20.5

Min Draft: 5' 10" (1.78mm)

Max Draft: 6' (1.83mm)

Cruise Speed: 20 Knots Kts. (23 MPH)

Max Speed: 27 Knots Kts. (31 MPH)

Our experienced yacht broker, Andrey Shestakov, will help you choose and buy a yacht that best suits your needs **GRACE — NORDLUND** from our catalogue. Presently, at Shestakov Yacht Sales Inc., we have a wide variety of yachts available on our sale's list. We also work in close contact with all the big yacht manufacturers from all over the world.

If you would like to buy a yacht **GRACE — NORDLUND** or would like help answering any questions concerning purchasing, selling or chartering a yacht, please call **+1(954)274-4435**

TABLE OF CONTENTS

TABLE OF CONTENTS	2
SPECIFICATIONS	6
Overview	6
Basic Information	6
Dimensions	6
Speed, Capacities and Weight	6
Accommodations	6
Hull and Deck Information	7
Engine Information	7
PHOTOS	8
Salon Looking Fwd	8
Salon Stbd Aft	8
Salon Stbd Side	8
Salon	8
Salon Looking Aft	8
Private Master Stairs	8
Dining Salon Looking Fwd	9
Dining Salon Looking Stbd	9
Dining Salon Looking Aft	9
Day Head	9
Foyer Laundry	9
Master Looking Aft	9
Master Looking Fwd	10
Master Looking Fwd	10
Forward Master and Foyer	10
Her Head	10
Her Head	10
Her Head Jacuzzi	10

Walk-in Locker	11
His Head	11
His Head Shower	11
Companionway Switch Panel	11
Galley Looking Fwd	11
Galley Looking Aft	11
Double Ovens	12
Galley Fwd	12
Galley Port Side	12
VIP Looking Aft	12
VIP	12
VIP Head	12
Port Side Guest Cabin	13
Port Side Guest Cabin Head	13
Forward Cabin	13
Forward Cabin	13
Forward Cabin Looking Aft	13
Forward Cabin Head	13
Pilothouse	14
Helm	14
Pilothouse Seating	14
Helm Detail	14
Helm Detail	14
Bow Area	14
Abundant Seating	15
Aft Deck	15
Aft Deck Bar	15
Aft Deck	15
Aft Deck Grill	15

Transom Steps	15
Swim Platform-Crew Entrance	16
Flybridge	16
Flybridge Seating	16
Flybridge Seating to Port	16
Stbd. Side Flybridge Bar	16
Flybridge Grill	16
Flybridge Helm Area	17
Helm	17
Helm Detail	17
Helm Detail	17
Helm Detail	17
Stbd. Side Wing Station	17
Boat Deck	18
Boat Deck	18
Steps to Aft Deck	18
Engine Room Looking Forward	18
Stbd. Engine	18
Ahead of Stbd. Engine	18
Aft of Stbd Engine	19
Port Engine	19
Ahead of Port Engine	19
Outboard Port Engine	19
Cruising	19
Engine Room Center	19
From Above	20
13 Knots	20
Excellent Bow Seating	20
Transom Shot	20

Alternate Profile	20
Bridge Deck Toys	20
Hardtop Equipment	21
From Above	21
CONTACTS	22
Contact details	22
Telephones	22
Office hours	22
Address	22

SPECIFICATIONS

Overview

GRACE is definitely a one of a kind RPH motor yacht. She offers four staterooms plus crew, a great shaded entertaining flybridge, newer 4-cycle CAT's, updated electronics and stabilizers and a very comfortable high end interior with a unique entertaining galley.

Basic Information

Category: Raised Pilothouse

Sub Category: Raised Pilothouse

Model Year: 1995

Year Built: 1994

Country: United States

Dimensions

LOA: 96' (29.26mm)

Beam: 20.5

Min Draft: 5' 10" (1.78mm)

Max Draft: 6' (1.83mm)

Speed, Capacities and Weight

Cruise Speed: 20 Knots Kts. (23 MPH)

Max Speed: 27 Knots Kts. (31 MPH)

Gross Tonnage: 139 Pounds

Water Capacity: 470 Gallons

Holding Tank: 410 Gal Gallons

Fuel Capacity: 3420 Gal Gallons

Accommodations

Total Cabins: 4

Sleeps: 8

Total Heads: 6

Crew Cabin: 2

Crew Heads: 1

Hull and Deck Information

Hull Material: Fiberglass

Deck Material: Fiberglass

Hull Configuration: Modified V-Hull

Hull Color: White

Hull Designer: Doug Sharp

Engine Information

Engines: 2

Manufacturer: Caterpillar

Engine Type: Inboard

Fuel Type: Diesel

PHOTOS

Salon Looking Fwd



Salon Stbd Aft



Salon Stbd Side



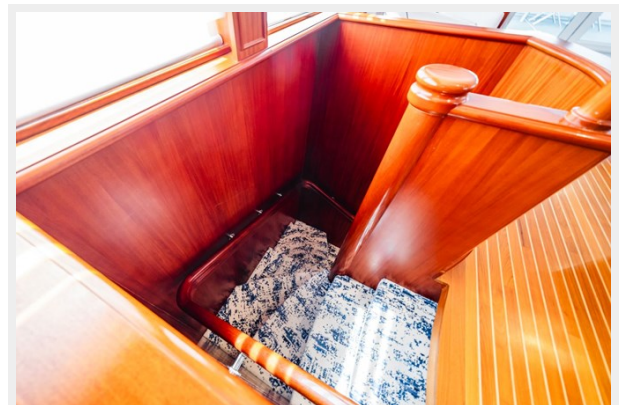
Salon



Salon Looking Aft



Private Master Stairs



Dining Salon Looking Fwd



Dining Salon Looking Stbd



Dining Salon Looking Aft



Day Head



Foyer Laundry



Master Looking Aft



Master Looking Fwd



Master Looking Fwd



Forward Master and Foyer



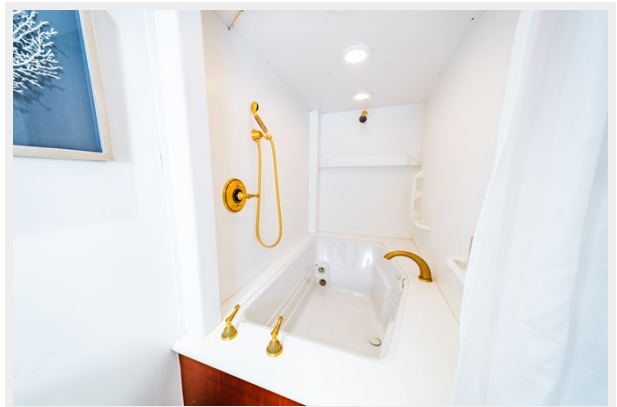
Her Head



Her Head



Her Head Jacuzzi



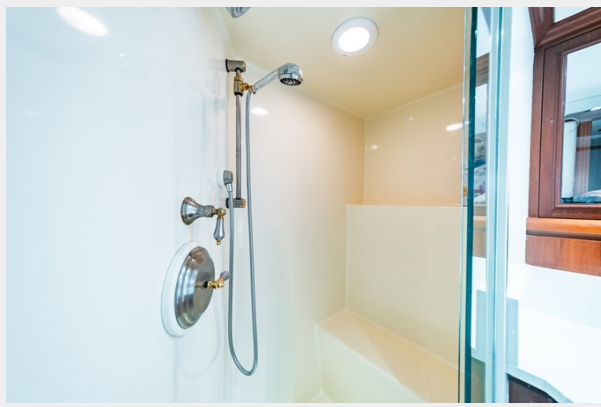
Walk-in Locker



His Head



His Head Shower



Companionway Switch Panel



Galley Looking Fwd



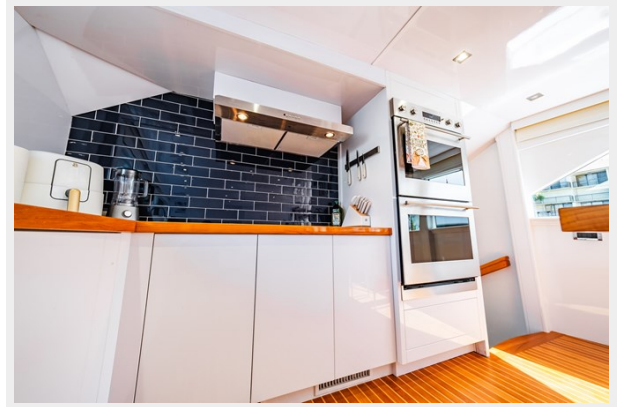
Galley Looking Aft



Double Ovens



Galley Fwd



Galley Port Side



VIP Looking Aft



VIP



VIP Head



Port Side Guest Cabin



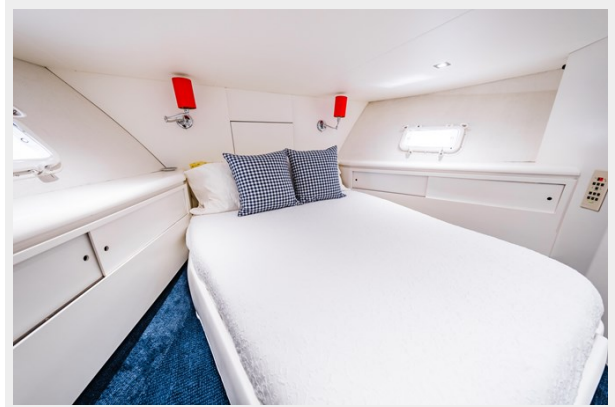
Port Side Guest Cabin Head



Forward Cabin



Forward Cabin



Forward Cabin Looking Aft



Forward Cabin Head



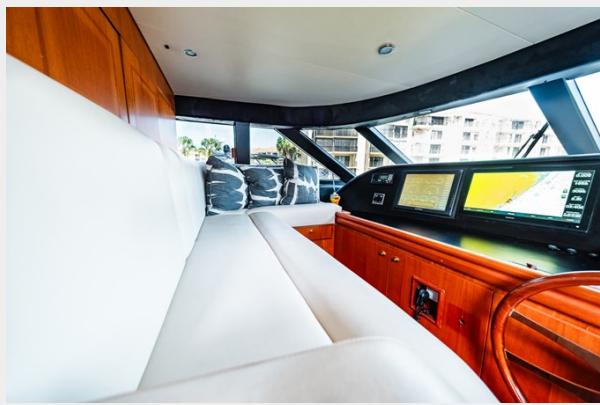
Pilothouse



Helm



Pilothouse Seating



Helm Detail



Helm Detail



Bow Area



Abundant Seating



Aft Deck



Aft Deck Bar



Aft Deck



Aft Deck Grill



Transom Steps



Swim Platform-Crew Entrance



Flybridge



Flybridge Seating



Flybridge Seating to Port



Stbd. Side Flybridge Bar



Flybridge Grill



Flybridge Helm Area



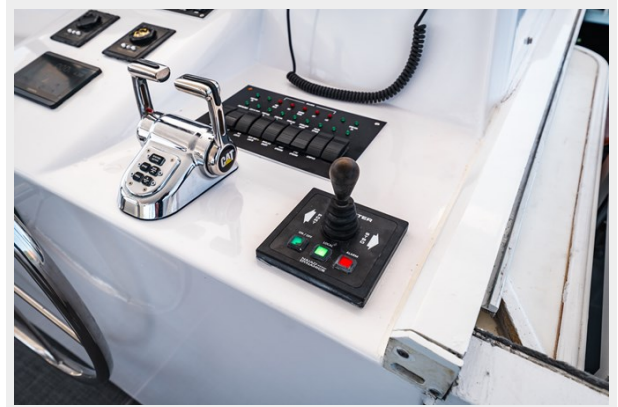
Helm



Helm Detail



Helm Detail



Helm Detail



Stbd. Side Wing Station



Boat Deck



Boat Deck



Steps to Aft Deck



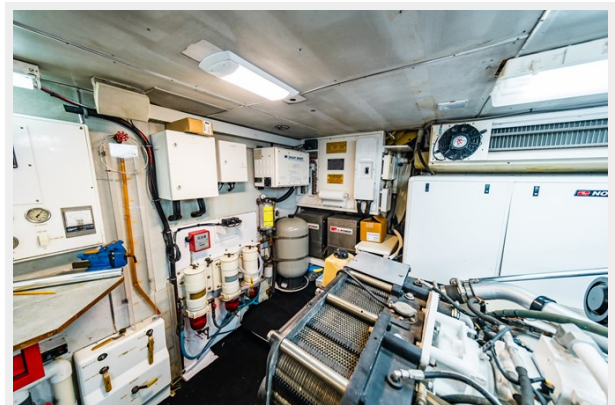
Engine Room Looking Forward



Stbd. Engine



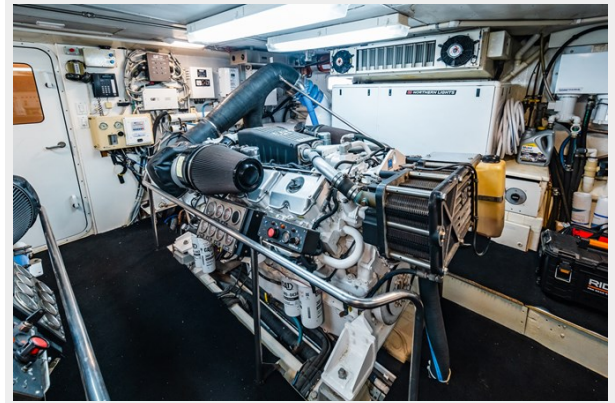
Ahead of Stbd. Engine



Aft of Stbd Engine



Port Engine



Ahead of Port Engine



Outboard Port Engine



Engine Room Center



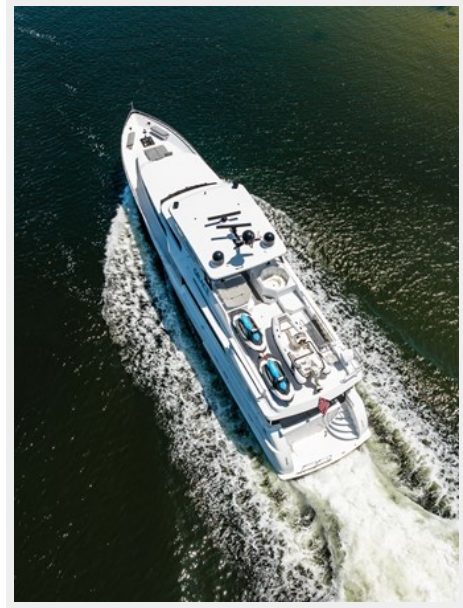
Cruising



13 Knots



From Above



Excellent Bow Seating



Transom Shot



Alternate Profile



Bridge Deck Toys



Hardtop Equipment



From Above



CONTACTS

Andrey Shestakov, leading yacht broker of the sales department of Shestakov Yacht Sales Inc. Shestakov Yacht Sales Inc., the official representative of the Miami/Fort Lauderdale FL headquarters.

Contact details

Email: andrey@shestakovyachtsales.com

Web: shestakovyachtsales.com/en/

Telephones

USA: +1(954)274-4435

Office hours

Monday – Saturday: **9:00 - 21:00** EDT

Sunday: **closed**

Address



Harbour Towne Marina, 850 NE 3rd St,
STE 213, Dania, FL 33004