

# 1994 SEA RAY 440 EXPRESS BRIDGE — SEA RAY



**Builder:** SEA RAY

**Year Built:** 1994

**Model:** Flybridge

**Price:** \$94,500 USD

**Location:** United States

**LOA:** 44' (13.41mm)

**Beam:** 14.5

**Cruise Speed:** 14.77 Knots Kts. (17 MPH)

**Max Speed:** 17.38 Knots Kts. (20 MPH)

Our experienced yacht broker, Andrey Shestakov, will help you choose and buy a yacht that best suits your needs 1994 Sea Ray 440 Express Bridge — SEA RAY from our catalogue. Presently, at Shestakov Yacht Sales Inc., we have a wide variety of yachts available on our sale's list. We also work in close contact with all the big yacht manufacturers from all over the world.

If you would like to buy a yacht 1994 Sea Ray 440 Express Bridge — SEA RAY or would like help answering any questions concerning purchasing, selling or chartering a yacht, please call **+1(954)274-4435**

---

# TABLE OF CONTENTS

---

TABLE OF CONTENTS	2
SPECIFICATIONS	3
Overview	3
Basic Information	3
Dimensions	3
Speed, Capacities and Weight	3
Accommodations	3
Engine Information	4
PHOTOS	5
CONTACTS	10
Contact details	10
Telephones	10
Office hours	10
Address	10

# SPECIFICATIONS

---

## Overview

---

1994 Sea Ray 440 Express Bridge This is hands down the best priced flybridge on the market. Turn Key. Cummins diesels, and Onan generator. Air conditioner, and JL audio system. Fully preserved upholstery all white 4 new engine batteries (2 starboard, 2 Port) 1 new generator battery Cummins Onan generator 1200 hrs Garmin 7215 17" chartploter 2 air conditioners in cabin Cabin flat screen tv Cabin bose surround sound Battery charger new Bimini 2020 full snap in carpet runners in cabin

## Basic Information

---

**Category:** Flybridge

**Sub Category:** Flybridge

**Model Year:** 1994

**Year Built:** 1994

**Country:** United States

## Dimensions

---

**LOA:** 44' (13.41mm)

**Beam:** 14.5

## Speed, Capacities and Weight

---

**Cruise Speed:** 14.77 Knots Kts. (17 MPH)

**Max Speed:** 17.38 Knots Kts. (20 MPH)

**Water Capacity:** 100 Gallons

**Holding Tank:** 60 Gal Gallons

**Fuel Capacity:** 400 Gal Gallons

## Accommodations

---

**Total Cabins:** 1

**Total Heads:** 2

---

## Engine Information

---

**Engines:** 2

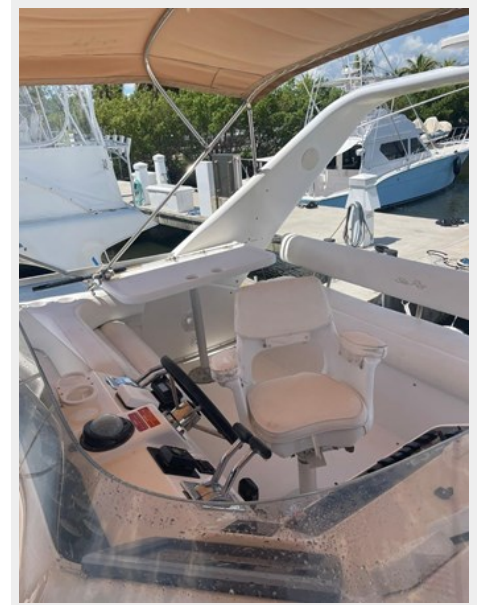
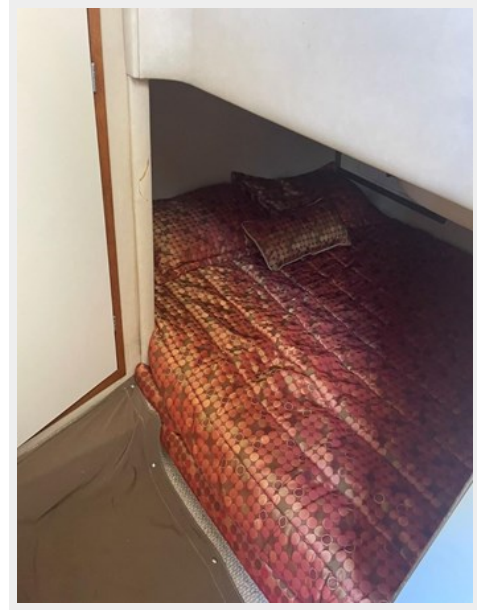
**Manufacturer:** Cummins

**Engine Type:** Inboard

**Fuel Type:** Diesel

# PHOTOS













# CONTACTS

---

Andrey Shestakov, leading yacht broker of the sales department of Shestakov Yacht Sales Inc. Shestakov Yacht Sales Inc., the official representative of the Miami/Fort Lauderdale FL headquarters.

## Contact details

---

Email: [andrey@shestakovyachtsales.com](mailto:andrey@shestakovyachtsales.com)

Web: [shestakovyachtsales.com/en/](http://shestakovyachtsales.com/en/)

## Telephones

---

USA: +1(954)274-4435

## Office hours

---

Monday – Saturday: **9:00 - 21:00** EDT

Sunday: **closed**

## Address

---



Harbour Towne Marina, 850 NE 3rd St,  
STE 213, Dania, FL 33004