

1999 BAYLINER 3255 AVANTI — BAYLINER



Builder: BAYLINER

Year Built: 1999

Model: cruiser

Price: \$27,500 USD

Location: United States

LOA: 32' (9.75mm)

Beam: 11

Cruise Speed: 22 Knots Kts. (25 MPH)

Max Speed: 37 Knots Kts. (43 MPH)

Our experienced yacht broker, Andrey Shestakov, will help you choose and buy a yacht that best suits your needs 1999 Bayliner 3255 Avanti — BAYLINER from our catalogue. Presently, at Shestakov Yacht Sales Inc., we have a wide variety of yachts available on our sale's list. We also work in close contact with all the big yacht manufacturers from all over the world.

If you would like to buy a yacht 1999 Bayliner 3255 Avanti — BAYLINER or would like help answering any questions concerning purchasing, selling or chartering a yacht, please call **+1(954)274-4435**

TABLE OF CONTENTS

TABLE OF CONTENTS	2
SPECIFICATIONS	3
Overview	3
Basic Information	4
Dimensions	4
Speed, Capacities and Weight	4
Accommodations	4
Engine Information	4
PHOTOS	5
CONTACTS	10
Contact details	10
Telephones	10
Office hours	10
Address	10

SPECIFICATIONS

Overview

1999 Bayliner 3255 Avanti Owner financing available with 50% down This beautiful completely renovated Bayliner is a sure head turner on the water. Marvel the teal custom hull wrap with orange accented boot stripe. bow pads were just custom fabricated and placed in fall of 2022. Step aboard the spacious aft deck and notice the extremely well maintained upholstery. Custom granite countertop dinette was added to the cockpit as well as inside the cabin throughout the galley. New cabin upholstery added in fall of 2022 compliments the light maple cabinetry for a beautiful color contrast offset. Victron inverter with battery bank was added to support both AC and DC function throughout the vessel while underway

Manufacturer Provided Description The Bayliner 3255 Avanti Express has earned its place among mid-range sport cruisers for its good looks and extensive list of standard features. No other express-style cruiser in its class offers its room and comfort below decks. Exceptionally large windows admit plenty of light for an open, airy feeling. Accommodations include forward V-berth that doubles as a lounge with removable table, four-place dinette, private double mid berth, complete electric galley, and private head with shower. Topside, the large open cockpit opens to the swim platform via a fully-integrated transom door. Integral bow platform, radar arch, a full acrylic canvas weather enclosure, VHF radio, trim tabs, 30-amp dockside power, and compass are among the 3255's standard features.

BAYLINER'S AVANTIS Bayliner's Avanti line combines dramatic, contemporary styling and leading-edge design with old-world skill and craftsmanship. Manufacturing teams apply leading-edge technology and meticulous hand-crafting to every stage of construction. A crew of technicians subject each new model to extremes of stress, endurance and punishment to ensure that every Avanti exceeds every expectation. Each Avanti offers a five-year structural hull limited warranty that's fully transferable to protect your investment and assure years of trouble-free boating. Avanti, the most luxurious cruiser in its class, features all the amenities of home. With its spacious cockpit and seating area, the Avanti is perfect for all-day cruising or entertaining.

Engines: NEW ENGINES IN 2017 (2) Mercruisers 5.7 Litre Bravo II 127 hrs

Interior includes: Queen-size bed in aft cabin with large locker and wood door for privacy Enclosed head with shower and good storage Full galley with 2 burners that are electric or gas-fueled, microwave, SS sink, and refrigerator Convertible dinette V-berth fore with optional table AM/FM/CD player with interior and cockpit speakers Electric bilge pump Manual bilge pump Marine head Hot water Inverter battery system Cockpit includes: Full camper canvas in good condition Wet bar External shower Transom door Lowrance GPS Radio Television antennae Comp Depth sounder Other external: Large swim platform with pole attachment for BBQ grill Swim ladder Foredeck sun pads Dinghy transit system Windlass anchor Trim tabs

Basic Information

Category: cruiser

Model Year: 1999

Year Built: 1999

Country: United States

Dimensions

LOA: 32' (9.75mm)

Beam: 11

Speed, Capacities and Weight

Cruise Speed: 22 Knots Kts. (25 MPH)

Max Speed: 37 Knots Kts. (43 MPH)

Water Capacity: 30 Gallons

Holding Tank: 20 Gal Gallons

Fuel Capacity: 180 Gal Gallons

Accommodations

Total Heads: 1

Engine Information

Engines: 2

Manufacturer: Mercruiser

Engine Type: I/O

Fuel Type: Gas

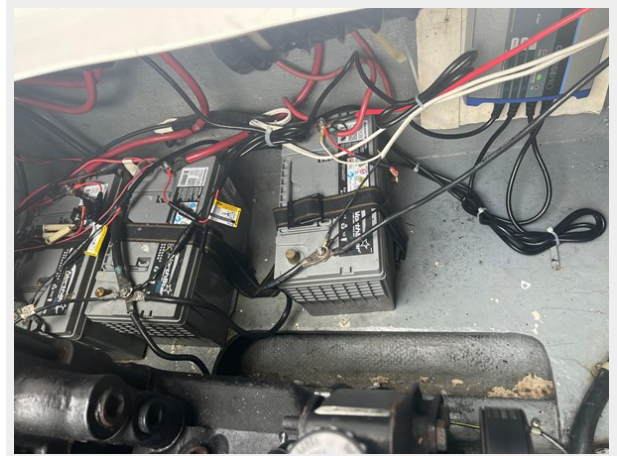
PHOTOS











CONTACTS

Andrey Shestakov, leading yacht broker of the sales department of Shestakov Yacht Sales Inc. Shestakov Yacht Sales Inc., the official representative of the Miami/Fort Lauderdale FL headquarters.

Contact details

Email: andrey@shestakovyachtsales.com

Web: shestakovyachtsales.com/en/

Telephones

USA: +1(954)274-4435

Office hours

Monday – Saturday: **9:00 - 21:00** EDT

Sunday: **closed**

Address



Harbour Towne Marina, 850 NE 3rd St,
STE 213, Dania, FL 33004