

HIGH OCCUPANCY — OCEANFAST



Судостроитель: OCEANFAST

Год постройки: 1989

Модель: Мега-яхта

Цена: \$6,998,000 USD

Местонахождение: United States

Длина общая: 164' (49.99m)

Ширина: 32

Мин. осадка: 5' 3" (1.6m)

Макс. осадка: 5' 10" (1.78m)

Крейс. скорость: 24 Knots Kts. (28 MPH)

Макс. скорость: 30 Knots Kts. (35 MPH)

Купить High Occupancy — OCEANFAST а также выбрать подходящую вам яхту из нашего каталога яхт вам поможет опытный яхтенный брокер Андрей Шестаков. На сегодняшний день компания Shestakov Yacht Sales Inc. имеет большое количество яхт в собственном списке продаж, а также тесно сотрудничает со всеми крупными яхтенными производителями по всему миру.

Для того чтобы купить яхту High Occupancy — OCEANFAST а также проконсультироваться по любому вопросу связанному с покупкой, продажей, чартером яхт позвоните по телефону **+7(918)465-66-44**.

ОГЛАВЛЕНИЕ

ОГЛАВЛЕНИЕ	2
ХАРАКТЕРИСТИКИ	9
Обзор	9
Основная информация	9
Размеры	9
Скорость, вместимость и масса	9
Размещение	10
Корпус и палуба	10
Информация о двигателе	10
ФОТОГРАФИИ	11
164 OCEANFAST 1989 BOW WALKAROUND	11
164 OCEANFAST 1989 ARIEL PROFILE 2	11
164 OCEANFAST 1989 UPPER DECK LOUNGE	11
164 OCEANFAST 1989 JACUZZI 6	11
164 OCEANFAST 1989 AFT PROFILE	11
164 OCEANFAST 1989 BOW PROFILE	11
164 OCEANFAST 1989 PROFILE 2	12
164 OCEANFAST 1989 PROFILE	12
164 OCEANFAST 1989 PROFILE 3	12
164 OCEANFAST 1989 ARIEL PROFILE	12
164 OCEANFAST 1989 PROFILE 9	12
164 OCEANFAST 1989 PROFILE 5	12
164 OCEANFAST 1989 RUNNING	12
164 OCEANFAST 1989 PROFILE 11	12
164 OCEANFAST 1989 PROFILE 10	13
164 OCEANFAST 1989 PROFILE 4	13
164 OCEANFAST 1989 PROFILE 6	13
164 OCEANFAST 1989 PROFILE 7	13

164 OCEANFAST 1989BOW STORAGE AREA	13
164 OCEANFAST 1989 PROFILE 8	13
164 OCEANFAST 1989 BOW CRANE	14
164 OCEANFAST 1989 WAVERUNNERS	14
164 OCEANFAST 1989 BOW PASSAGEWAY	14
164 OCEANFAST 1989 HELM WINDSHIELD	14
CONTROL STATION	14
164 OCEANFAST 1989 WALKAROUND 2	14
164 OCEANFAST 1989 2ND DECK PASSAGEWAY	15
164 OCEANFAST 1989 2ND DECK PASSAGEWAY 2	15
164 OCEANFAST 1989 MAIN DECK PASSAGWAY	15
164 OCEANFAST 1989 2ND DECK LOUNGE	15
164 OCEANFAST 1989 2ND DECK DINING 2	15
164 OCEANFAST 1989 2ND DECK AREA	15
164 OCEANFAST 1989 2ND DECK DINING	16
164 OCEANFAST 1989 AFT DECK AREA 2	16
164 OCEANFAST 1989 AFT DECK SEATING 2	16
164 OCEANFAST 1989 AFT DECK SEATING	16
164 OCEANFAST 1989 UPPER DECK STAIRCASE	16
164 OCEANFAST 1989 AFT DECK	16
164 OCEANFAST 1989 DECKS	17
164 OCEANFAST 1989 FLYBRIDGE AREA	17
164 OCEANFAST 1989 JACUZZI 3	17
164 OCEANFAST 1989 JACUZZI 2	17
164 OCEANFAST 1989 JACUZZI 5	17
164 OCEANFAST 1989 JACUZZI 4	17
164 OCEANFAST 1989 JACUZZI	18
164 OCEANFAST 1989 MAST	18
164 OCEANFAST 1989 UPPER DECK JACUZZI VEIW	18

164 OCEANFAST 1989 UPPER DECK AREA	18
164 OCEANFAST 1989 UPPER DECK LOUNGE 4	18
164 OCEANFAST 1989 UPPER DECK LOUNGE 3	18
164 OCEANFAST 1989 UPPER DECK LOUNGE 2	19
164 OCEANFAST 1989 UPPER DECK CONTROLS 2	19
164 OCEANFAST 1989 UPPER DECK AREA 2	19
164 OCEANFAST 1989 UPPER DECK CONTROLS	19
164 OCEANFAST 1989 UPPER DECK PASSAGE	19
164 OCEANFAST 1989 UPPER DECK PASSAGEWAY	19
164 OCEANFAST 1989 UPPER DECK SEATING 2	20
164 OCEANFAST 1989 UPPER DECK SEATING	20
164 OCEANFAST 1989 AFT LOUNGE AREA 3	20
164 OCEANFAST 1989 UPPER DECK	20
164 OCEANFAST 1989 AFT LOUNGE AREA 2	20
164 OCEANFAST 1989 AFT LOUNGE AREA	20
164 OCEANFAST 1989 AFT LOUNGE	21
164 OCEANFAST 1989 BAR AREA	21
BAR AREA	21
164 OCEANFAST 1989 BAR	21
164 OCEANFAST 1989 FOYER	21
164 OCEANFAST 1989 GAME AREA	21
164 OCEANFAST 1989 GAME AREA 4	22
164 OCEANFAST 1989 GAME AREA 2	22
164 OCEANFAST 1989 MAIN SALON AND GAME AREA	22
164 OCEANFAST 1989 MAIN SALON AND GAME AREA 2	22
164 OCEANFAST 1989 MAIN SALON AND GAME AREA 4	22
164 OCEANFAST 1989 MAIN SALON 3	22
164 OCEANFAST 1989 MAIN SALON	23
164 OCEANFAST 1989 MAIN SALON 2	23

164 OCEANFAST 1989 SALON COMPANIONWAY	23
164 OCEANFAST 1989 MAIN SALON 4	23
164 OCEANFAST 1989 BATHROOM	23
164 OCEANFAST 1989 BATHROOM 2	23
164 OCEANFAST 1989 BATHROOM 3	24
164 OCEANFAST 1989 BATHROOM 4	24
164 OCEANFAST 1989 BATHROOM 5	24
164 OCEANFAST 1989 BATHROOM 6	24
164 OCEANFAST 1989 BATHROOM DETAIL 2	24
164 OCEANFAST 1989 BATHROOM DETAIL 3	24
164 OCEANFAST 1989 BATHROOM DETAIL	25
164 OCEANFAST 1989 BATHROOM	25
164 OCEANFAST 1989 CABIN TV	25
164 OCEANFAST 1989 CAPTAINS OFFICE	25
164 OCEANFAST 1989 CREW COMPANIONWAY	25
164 OCEANFAST 1989 CREW DATA	25
164 OCEANFAST 1989 CREW LOUNGE 2	26
164 OCEANFAST 1989 CREW LOUNGE 3	26
164 OCEANFAST 1989 CREW LOUNGE	26
164 OCEANFAST 1989 CREW MESS	26
164 OCEANFAST 1989 DETAILS 2	26
164 OCEANFAST 1989 DETAILS	26
164 OCEANFAST 1989 DINING DETAIL	27
164 OCEANFAST 1989 ELECTRONICS 2	27
164 OCEANFAST 1989 FORMAL DINING ROOM 2	27
164 OCEANFAST 1989 FORMAL DINING ROOM 3	27
164 OCEANFAST 1989 FORMAL DINING ROOM 4	27
164 OCEANFAST 1989 FORMAL DINING ROOM	27
164 OCEANFAST 1989 FOYER STAIRCASE 2	28

164 OCEANFAST 1989 FOYER STARCASE	28
CREW AREA	28
164 OCEANFAST 1989 GALLEY 2	28
164 OCEANFAST 1989 GALLEY CREW AREA 2	28
164 OCEANFAST 1989 GALLEY 4	28
164 OCEANFAST 1989 GALLEY DETAIL	29
164 OCEANFAST 1989 GALLEY OVENS	29
164 OCEANFAST 1989 GALLEY	29
164 OCEANFAST 1989 GUEST CABIN 3	29
164 OCEANFAST 1989 GUEST CABIN 4	29
164 OCEANFAST 1989 GUEST CABIN 5	29
164 OCEANFAST 1989 GUEST CABIN 6	30
164 OCEANFAST 1989 GUEST CABIN 7	30
164 OCEANFAST 1989 GUEST CABIN 8	30
164 OCEANFAST 1989 GUEST CABIN	30
164 OCEANFAST 1989 GUEST COMPANIONWAY	30
164 OCEANFAST 1989 GUEST SHOWER	30
164 OCEANFAST 1989 HELM AREA 2	31
164 OCEANFAST 1989 HELM AREA 3	31
164 OCEANFAST 1989 HELM AREA PASSAGEWAY	31
164 OCEANFAST 1989 HELM ELECTRONICS	31
164 OCEANFAST 1989 HELM MONITORS	31
164 OCEANFAST 1989 HELM PORTSIDE	31
164 OCEANFAST 1989 HELM STARBOARD SIDE	32
164 OCEANFAST 1989 HELM RADAR	32
164 OCEANFAST 1989 MAIN DRIVING STATION	32
164 OCEANFAST 1989 MAIN HELM AREA 4	32
164 OCEANFAST 1989 MAIN HELM AREA 5	32
164 OCEANFAST 1989 MAIN HELM AREA 6	32

164 OCEANFAST 1989 MAIN HELM AREA 7	33
164 OCEANFAST 1989 MAIN HELM AREA	33
164 OCEANFAST 1989 MAIN HELM CONTROLS	33
164 OCEANFAST 1989 MAIN HELM SEATING	33
164 OCEANFAST 1989 MASTER 2ND HEAD 2	33
164 OCEANFAST 1989 MASTER 2ND HEAD 3	33
164 OCEANFAST 1989 MASTER 2ND HEAD 4	34
164 OCEANFAST 1989 MASTER 2ND HEAD VANITY	34
164 OCEANFAST 1989 MASTER 2ND HEAD	34
164 OCEANFAST 1989 MASTER CABIN 9	34
164 OCEANFAST 1989 MASTER CABIN 10	34
164 OCEANFAST 1989 MASTER CABIN 11	34
164 OCEANFAST 1989 MASTER COMPANIONWAY 2	35
164 OCEANFAST 1989 MASTER CLOSET	35
164 OCEANFAST 1989 MASTER COMPANIONWAY	35
164 OCEANFAST 1989 MASTER HALLWAY	35
164 OCEANFAST 1989 MASTER HEAD	35
164 OCEANFAST 1989 MASTER SHOWER	35
164 OCEANFAST 1989 MASTER STATEROOM 2	36
164 OCEANFAST 1989 MASTER STATEROOM 3	36
164 OCEANFAST 1989 MASTER STATEROOM 4	36
164 OCEANFAST 1989 MASTER STATEROOM	36
164 OCEANFAST 1989 MEDIA ROOM 2	36
164 OCEANFAST 1989 MEDIA ROOM 4	36
164 OCEANFAST 1989 MEDIA ROOM 5	37
164 OCEANFAST 1989 MEDIA ROOM 6	37
164 OCEANFAST 1989 MEDIA ROOM 7	37
164 OCEANFAST 1989 MEDIA ROOM 8	37
164 OCEANFAST 1989 MEDIA ROOM DETAIL	37

164 OCEANFAST 1989 MEDIA ROOM 9	37
164 OCEANFAST 1989 MEDIA ROOM	38
WALKIN FRIDGE	38
164 OCEANFAST 1989 PANTRY AREA	38
164 OCEANFAST 1989 PANTRY	38
164 OCEANFAST 1989 SALON DETAIL 2	38
164 OCEANFAST 1989 SALON DETAIL	38
164 OCEANFAST 1989 SINKS	39
164 OCEANFAST 1989 STAIRCASE 2	39
164 OCEANFAST 1989 STAIRCASE 4	39
164 OCEANFAST 1989 STAIRCASE	39
КОНТАКТЫ	40
Контактная информация	40
Телефоны	40
Время работы	40
Адрес	40

ХАРАКТЕРИСТИКИ

Обзор

The 1989 OCEANFAST 164 "HIGH OCCUPANCY" is designed to offer luxurious accommodations and amenities for a large number of guests, ensuring a comfortable and enjoyable experience on the water. Having a shallow draft allows for cruising in areas such as the Bahamas that most yachts of this size are unable to navigate. Its multiple decks, spacious staterooms, and well-equipped areas for dining, entertainment, and relaxation make it an ideal vessel for both private use and charter operations.

Основная информация

Тип судна: Мега-яхта

Подкатегория: Мега-яхта

Модельный год: 1989

Год постройки: 1989

Страна: United States

Размеры

Длина общая: 164' (49.99mm)

Ширина: 32

Мин. осадка: 5' 3" (1.6mm)

Макс. осадка: 5' 10" (1.78mm)

Скорость, вместимость и масса

Крейс. скорость: 24 Knots Kts. (28 MPH)

Дальность на крейсерской скорости:
1600

Макс. скорость: 30 Knots Kts. (35 MPH)

Чистый вес: 496 Pounds

Вместимость воды: 2615 Gallons

Объем топливного бака: 24750 Gal
Gallons

Размещение

Всего кают: 5

Всего ком. состава: 8

Комм. состав экипажа: 5

Корпус и палуба

Материал корпуса: Aluminum

Материал палубы: Teak

Цвет корпуса: Blue / White

Дизайнер экстерьера: Jon Bannenberg

Дизайнер интерьера: Jon Bannenberg

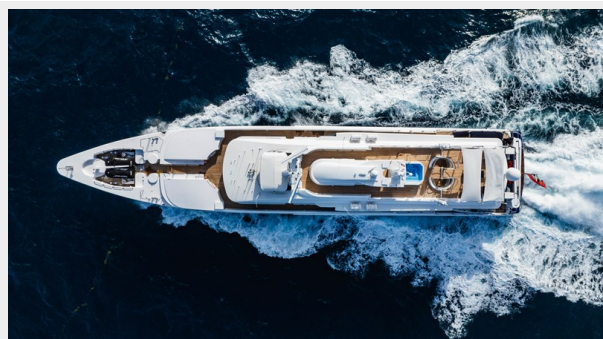
Информация о двигателе

Двигатели: 3

Производитель: MTU

ФОТОГРАФИИ

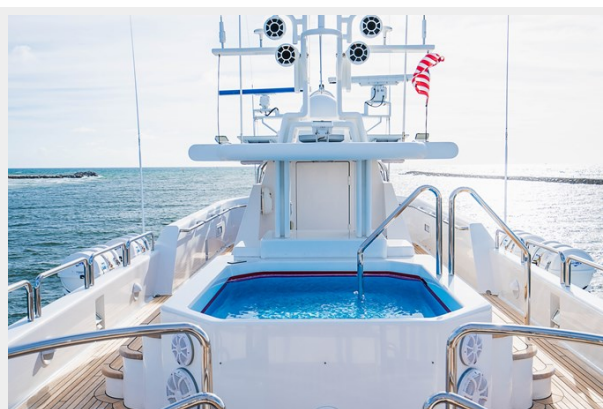
164 OCEANFAST 1989 ARIEL PROFILE 2



164 OCEANFAST 1989 BOW WALKAROUND



164 OCEANFAST 1989 JACUZZI 6



164 OCEANFAST 1989 UPPER DECK LOUNGE



164 OCEANFAST 1989 AFT PROFILE



164 OCEANFAST 1989 BOW PROFILE



164 OCEANFAST 1989 PROFILE 2



164 OCEANFAST 1989 PROFILE



164 OCEANFAST 1989 PROFILE 3



164 OCEANFAST 1989 ARIEL PROFILE



164 OCEANFAST 1989 PROFILE 9



164 OCEANFAST 1989 PROFILE 5



164 OCEANFAST 1989 RUNNING



164 OCEANFAST 1989 PROFILE 11



164 OCEANFAST 1989 PROFILE 10



164 OCEANFAST 1989 PROFILE 4



164 OCEANFAST 1989 PROFILE 6



164 OCEANFAST 1989 PROFILE 7



164 OCEANFAST 1989 PROFILE 8



164 OCEANFAST 1989 BOW STORAGE AREA



164 OCEANFAST 1989 BOW CRANE



164 OCEANFAST 1989 WAVERUNNERS



164 OCEANFAST 1989 HELM WINDSHIELD



**164 OCEANFAST 1989 BOW
PASSAGEWAY**



CONTROL STATION



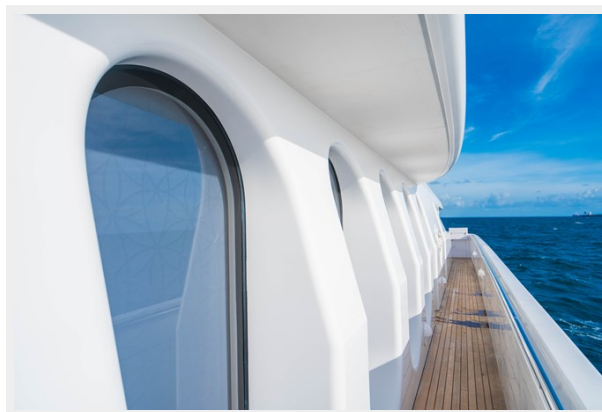
164 OCEANFAST 1989 WALKAROUND 2



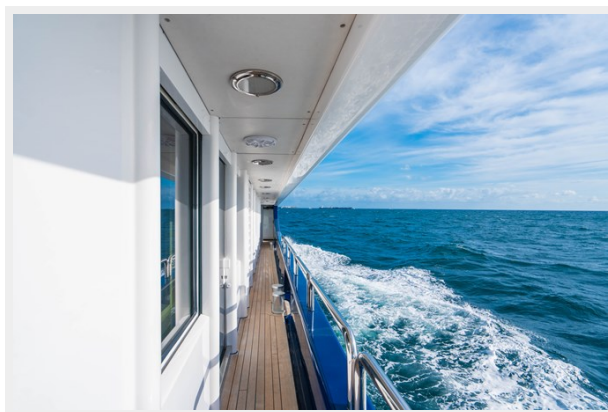
**164 OCEANFAST 1989 2ND DECK
PASSAGEWAY**



**164 OCEANFAST 1989 2ND DECK
PASSAGEWAY 2**



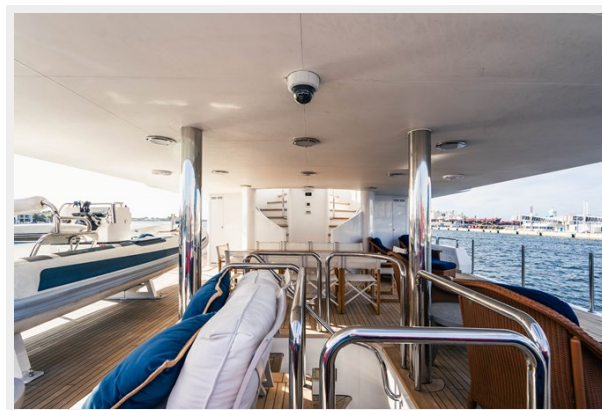
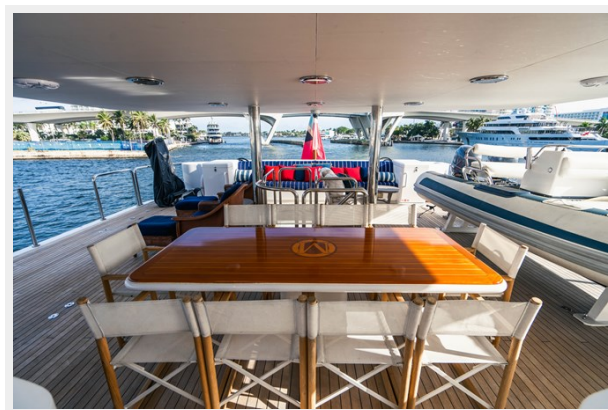
**164 OCEANFAST 1989 MAIN DECK
PASSAGWAY**



164 OCEANFAST 1989 2ND DECK LOUNGE



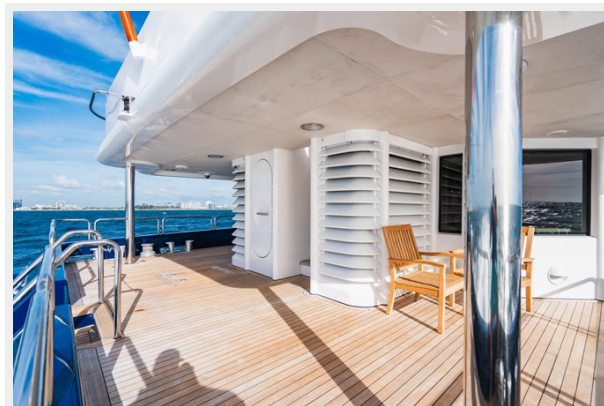
164 OCEANFAST 1989 2ND DECK DINING 2 164 OCEANFAST 1989 2ND DECK AREA



164 OCEANFAST 1989 2ND DECK DINING



164 OCEANFAST 1989 AFT DECK AREA 2



**164 OCEANFAST 1989 AFT DECK SEATING
2**



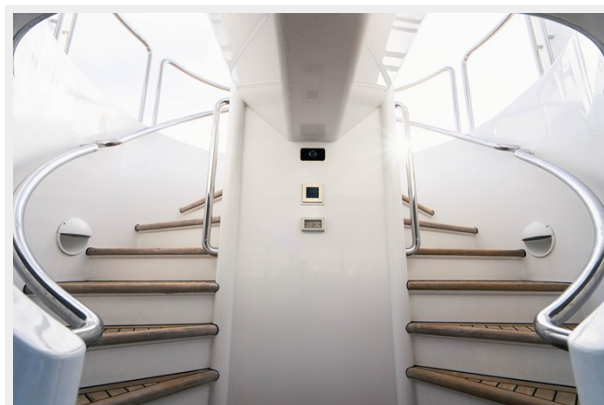
164 OCEANFAST 1989 AFT DECK SEATING



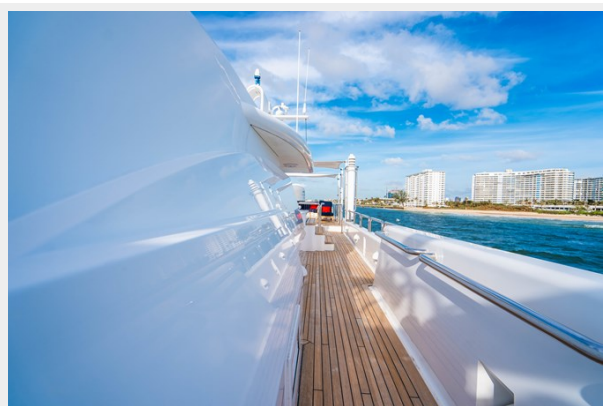
164 OCEANFAST 1989 AFT DECK



**164 OCEANFAST 1989 UPPER DECK
STAIRCASE**



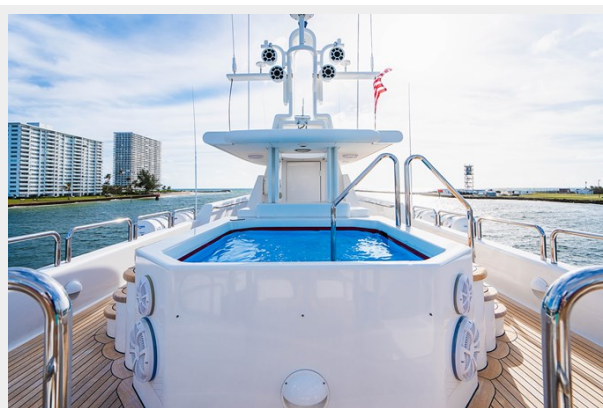
164 OCEANFAST 1989 DECKS



164 OCEANFAST 1989 FLYBRIDGE AREA



164 OCEANFAST 1989 JACUZZI 3



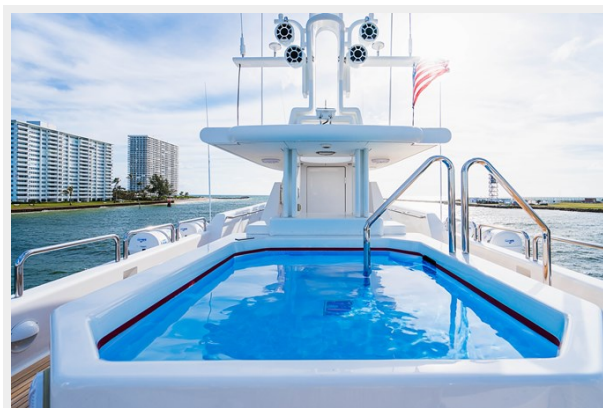
164 OCEANFAST 1989 JACUZZI 2



164 OCEANFAST 1989 JACUZZI 5



164 OCEANFAST 1989 JACUZZI 4



164 OCEANFAST 1989 JACUZZI



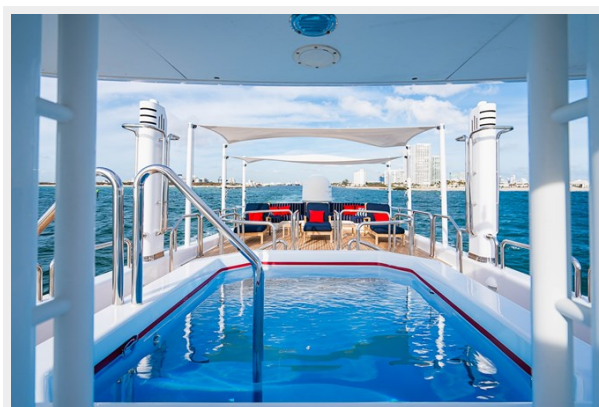
164 OCEANFAST 1989 MAST



164 OCEANFAST 1989 UPPER DECK AREA



**164 OCEANFAST 1989 UPPER DECK
JACUZZI VIEW**



**164 OCEANFAST 1989 UPPER DECK
LOUNGE 4**



**164 OCEANFAST 1989 UPPER DECK
LOUNGE 3**



**164 OCEANFAST 1989 UPPER DECK
LOUNGE 2**



**164 OCEANFAST 1989 UPPER DECK
CONTROLS 2**



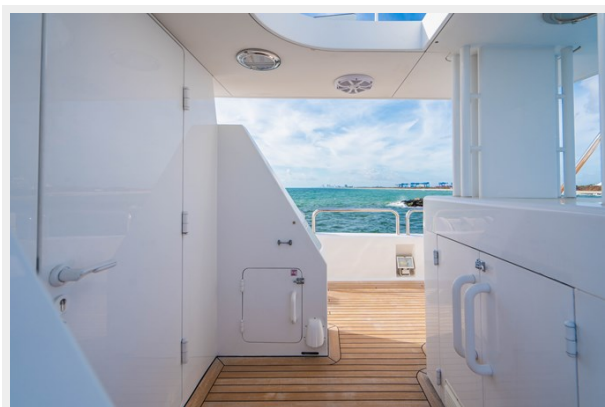
**164 OCEANFAST 1989 UPPER DECK AREA
2**



**164 OCEANFAST 1989 UPPER DECK
CONTROLS**



**164 OCEANFAST 1989 UPPER DECK
PASSAGE**



**164 OCEANFAST 1989 UPPER DECK
PASSAGEWAY**



164 OCEANFAST 1989 UPPER DECK SEATING 2



164 OCEANFAST 1989 UPPER DECK SEATING



164 OCEANFAST 1989 UPPER DECK



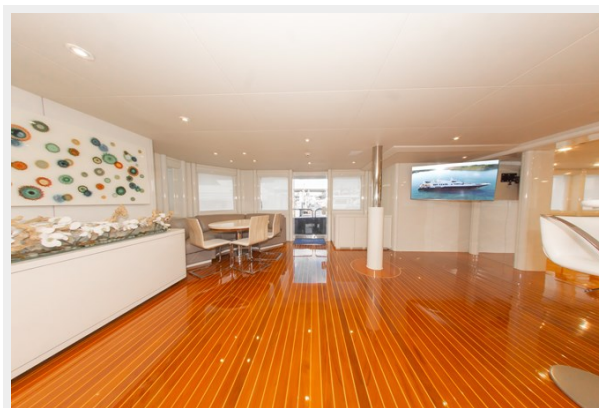
164 OCEANFAST 1989 AFT LOUNGE AREA 3



164 OCEANFAST 1989 AFT LOUNGE AREA 2



164 OCEANFAST 1989 AFT LOUNGE AREA



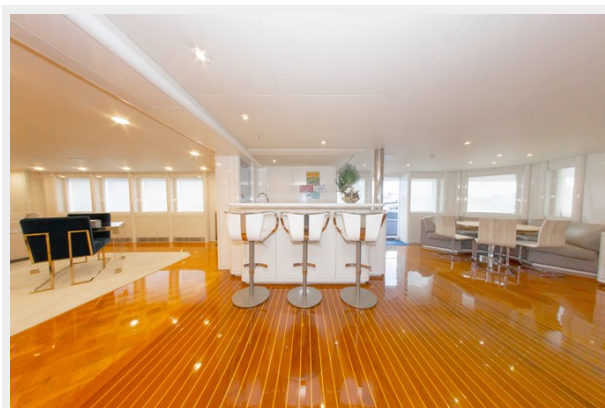
164 OCEANFAST 1989 AFT LOUNGE



164 OCEANFAST 1989 BAR AREA



BAR AREA



164 OCEANFAST 1989 BAR



164 OCEANFAST 1989 FOYER



164 OCEANFAST 1989 GAME AREA



164 OCEANFAST 1989 GAME AREA 4



164 OCEANFAST 1989 GAME AREA 2



164 OCEANFAST 1989 MAIN SALON AND GAME AREA



164 OCEANFAST 1989 MAIN SALON AND GAME AREA 2



164 OCEANFAST 1989 MAIN SALON AND GAME AREA 4



164 OCEANFAST 1989 MAIN SALON 3



164 OCEANFAST 1989 MAIN SALON



164 OCEANFAST 1989 MAIN SALON 2



**164 OCEANFAST 1989 SALON
COMPANIONWAY**



164 OCEANFAST 1989 MAIN SALON 4



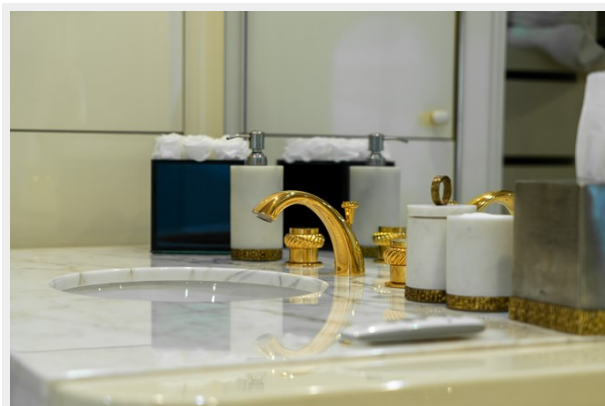
164 OCEANFAST 1989 BATHROOM



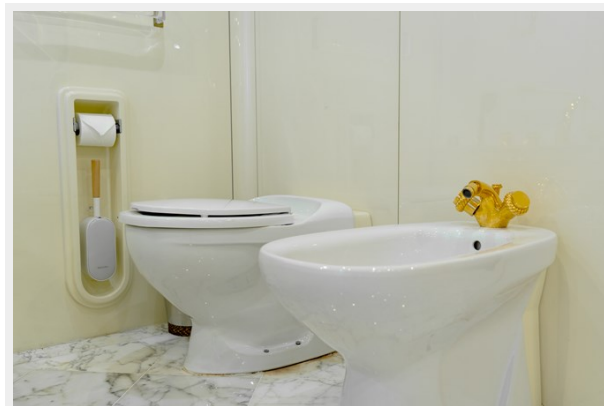
164 OCEANFAST 1989 BATHROOM 2



164 OCEANFAST 1989 BATHROOM 3



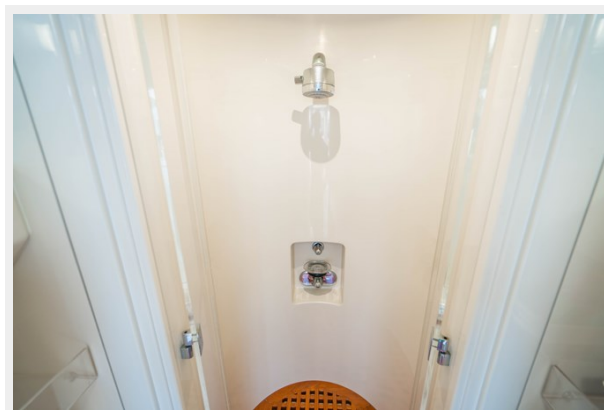
164 OCEANFAST 1989 BATHROOM 4



164 OCEANFAST 1989 BATHROOM 5



164 OCEANFAST 1989 BATHROOM 6

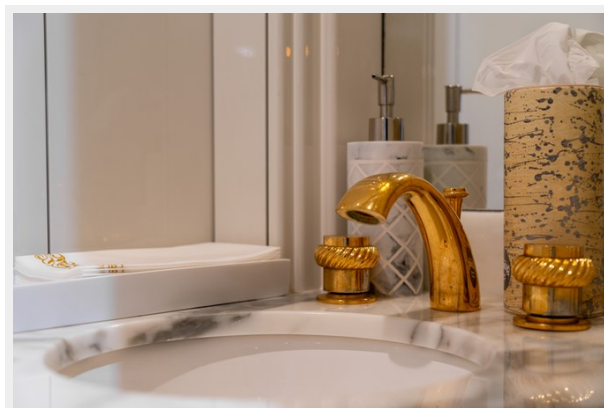


164 OCEANFAST 1989 BATHROOM DETAIL 164 OCEANFAST 1989 BATHROOM DETAIL

2



3



164 OCEANFAST 1989 BATHROOM DETAIL



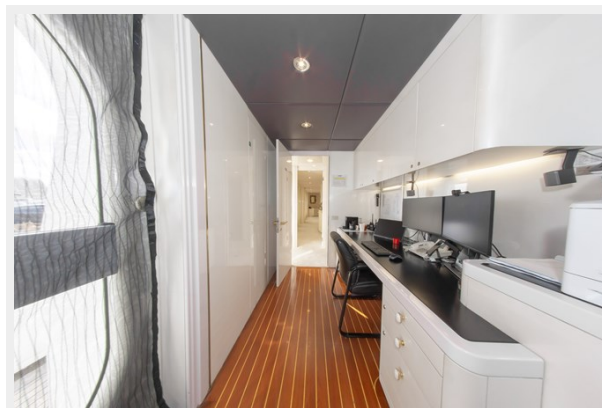
164 OCEANFAST 1989 BATHROOM



164 OCEANFAST 1989 CABIN TV



164 OCEANFAST 1989 CAPTAINS OFFICE



**164 OCEANFAST 1989 CREW
COMPANIONWAY**



164 OCEANFAST 1989 CREW DATA



164 OCEANFAST 1989 CREW LOUNGE 2



164 OCEANFAST 1989 CREW LOUNGE 3



164 OCEANFAST 1989 CREW LOUNGE



164 OCEANFAST 1989 CREW MESS



164 OCEANFAST 1989 DETAILS 2



164 OCEANFAST 1989 DETAILS



164 OCEANFAST 1989 DINING DETAIL



164 OCEANFAST 1989 ELECTRONICS 2



164 OCEANFAST 1989 FORMAL DINING ROOM 2



164 OCEANFAST 1989 FORMAL DINING ROOM 3



164 OCEANFAST 1989 FORMAL DINING ROOM 4



164 OCEANFAST 1989 FORMAL DINING ROOM



164 OCEANFAST 1989 FOYER STAIRCASE

2



164 OCEANFAST 1989 FOYER STARCASE



CREW AREA



164 OCEANFAST 1989 GALLEY 2



164 OCEANFAST 1989 GALLEY 4



164 OCEANFAST 1989 GALLEY CREW AREA 2



164 OCEANFAST 1989 GALLEY DETAIL



164 OCEANFAST 1989 GALLEY OVENS



164 OCEANFAST 1989 GALLEY



164 OCEANFAST 1989 GUEST CABIN 3



164 OCEANFAST 1989 GUEST CABIN 4



164 OCEANFAST 1989 GUEST CABIN 5



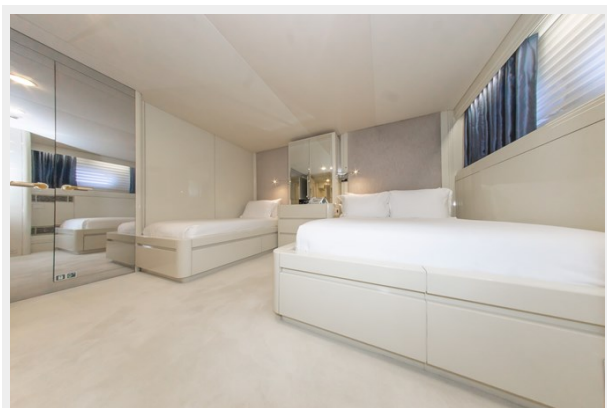
164 OCEANFAST 1989 GUEST CABIN 6



164 OCEANFAST 1989 GUEST CABIN 7



164 OCEANFAST 1989 GUEST CABIN 8



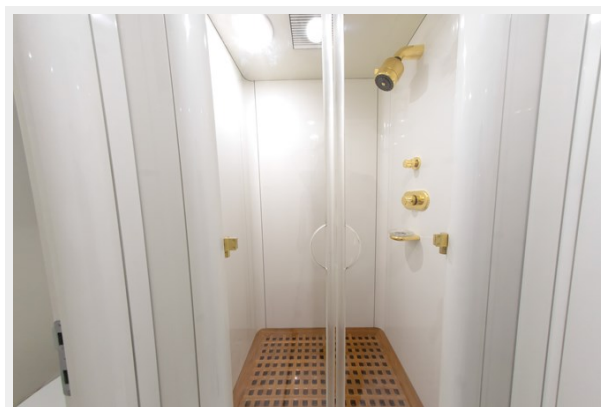
164 OCEANFAST 1989 GUEST CABIN



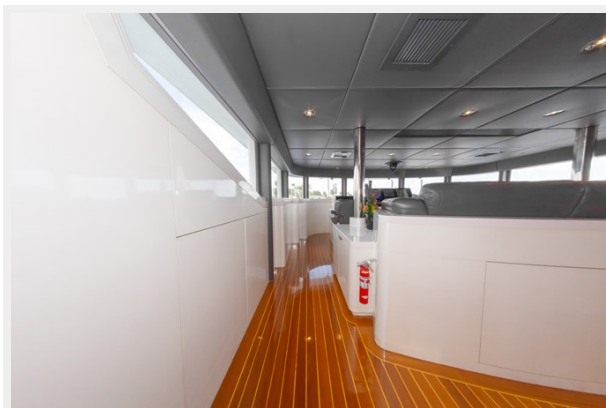
**164 OCEANFAST 1989 GUEST
COMPANIONWAY**



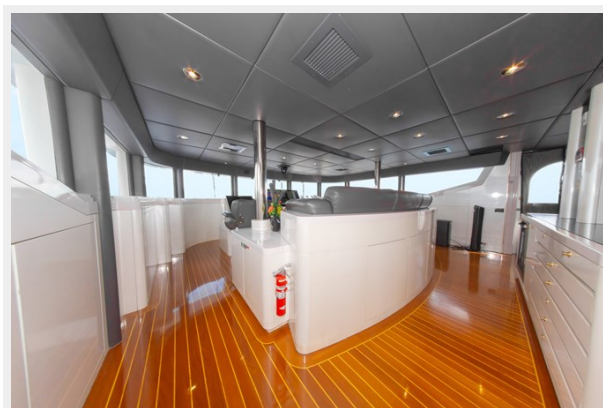
164 OCEANFAST 1989 GUEST SHOWER



164 OCEANFAST 1989 HELM AREA 2



164 OCEANFAST 1989 HELM AREA 3



**164 OCEANFAST 1989 HELM AREA
PASSAGEWAY**



**164 OCEANFAST 1989 HELM
ELECTRONICS**



164 OCEANFAST 1989 HELM MONITORS



164 OCEANFAST 1989 HELM PORTSIDE



164 OCEANFAST 1989 HELM RADAR



164 OCEANFAST 1989 HELM STARBOARD SIDE



164 OCEANFAST 1989 MAIN DRIVING STATION



164 OCEANFAST 1989 MAIN HELM AREA 4



164 OCEANFAST 1989 MAIN HELM AREA 5 164 OCEANFAST 1989 MAIN HELM AREA 6



164 OCEANFAST 1989 MAIN HELM AREA 7



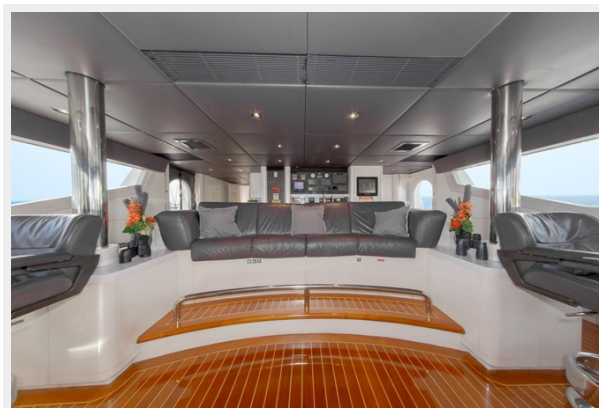
164 OCEANFAST 1989 MAIN HELM AREA



164 OCEANFAST 1989 MAIN HELM CONTROLS



164 OCEANFAST 1989 MAIN HELM SEATING



164 OCEANFAST 1989 MASTER 2ND HEAD

2



164 OCEANFAST 1989 MASTER 2ND HEAD

3



164 OCEANFAST 1989 MASTER 2ND HEAD 4 **164 OCEANFAST 1989 MASTER 2ND HEAD VANITY**



164 OCEANFAST 1989 MASTER 2ND HEAD **164 OCEANFAST 1989 MASTER CABIN 9**



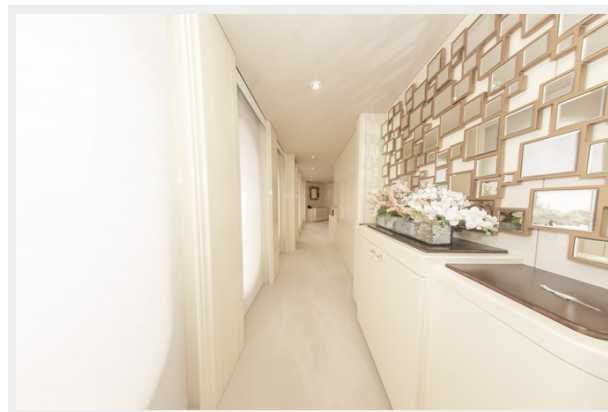
164 OCEANFAST 1989 MASTER CABIN 10 **164 OCEANFAST 1989 MASTER CABIN 11**



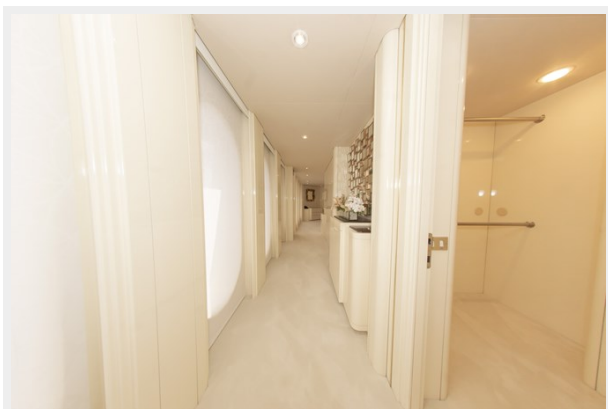
164 OCEANFAST 1989 MASTER CLOSET



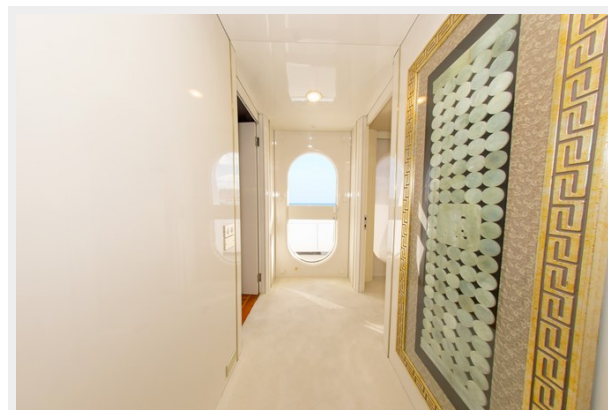
164 OCEANFAST 1989 MASTER COMPANIONWAY 2



164 OCEANFAST 1989 MASTER COMPANIONWAY



164 OCEANFAST 1989 MASTER HALLWAY



164 OCEANFAST 1989 MASTER HEAD



164 OCEANFAST 1989 MASTER SHOWER



**164 OCEANFAST 1989 MASTER
STATEROOM 2**



**164 OCEANFAST 1989 MASTER
STATEROOM 3**



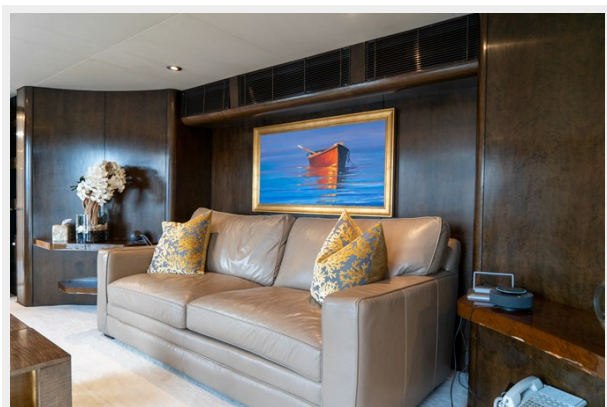
**164 OCEANFAST 1989 MASTER
STATEROOM 4**



**164 OCEANFAST 1989 MASTER
STATEROOM**



164 OCEANFAST 1989 MEDIA ROOM 2



164 OCEANFAST 1989 MEDIA ROOM 4



164 OCEANFAST 1989 MEDIA ROOM 5



164 OCEANFAST 1989 MEDIA ROOM 6



164 OCEANFAST 1989 MEDIA ROOM 7



164 OCEANFAST 1989 MEDIA ROOM 8



164 OCEANFAST 1989 MEDIA ROOM
DETAIL

164 OCEANFAST 1989 MEDIA ROOM 9



164 OCEANFAST 1989 MEDIA ROOM



WALKIN FRIDGE



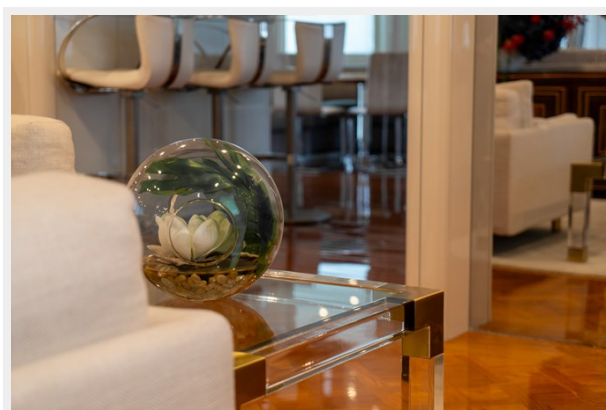
164 OCEANFAST 1989 PANTRY AREA



164 OCEANFAST 1989 PANTRY



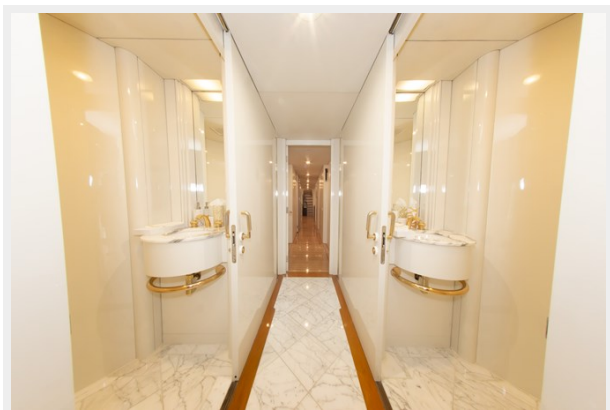
164 OCEANFAST 1989 SALON DETAIL 2



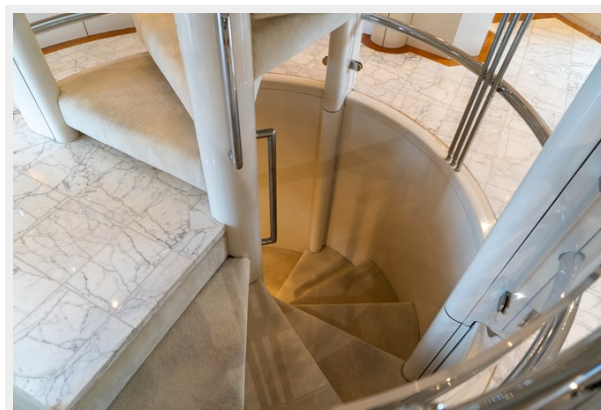
164 OCEANFAST 1989 SALON DETAIL



164 OCEANFAST 1989 SINKS



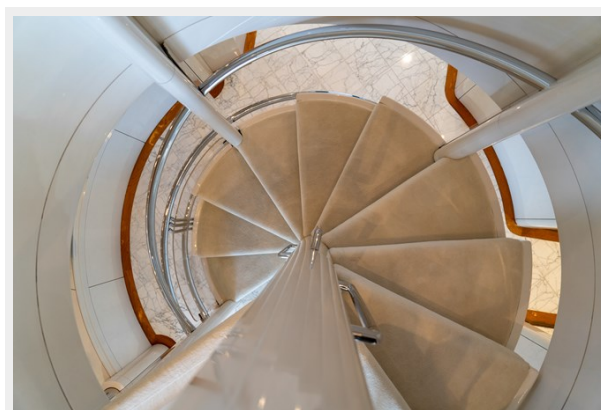
164 OCEANFAST 1989 STAIRCASE 2



164 OCEANFAST 1989 STAIRCASE 4



164 OCEANFAST 1989 STAIRCASE



КОНТАКТЫ

Андрей Шестаков (Andrey Shestakov) – ведущий яхтенный брокер отдела продаж яхт и судов компании Shestakov Yacht Sales Inc. Официальный представитель Shestakov Yacht Sales Inc. для русскоговорящих клиентов в центральном офисе компании в Майами/Форт Лодердейл/Флорида/США.

Контактная информация

Email: andrey@shestakovyachtsales.com

Web: shestakovyachtsales.com

Телефоны

Краснодарский край: **+7(918)465-66-44**

США, Майами, Флорида: **+1(954)274-4435**

Время работы

Понедельник – Суббота: **9:00 - 21:00**
EDT

Воскресенье: **Закрето**

Адрес



Harbour Towne Marina, 850 NE 3rd St,
STE 213, Dania, FL 33004