

BALANDRAU — MAIORA



Builder: MAIORA

Year Built: 2009

Model: Flybridge

Price: €3,650,000 EUR

Location: Spain

LOA: 107' (32.6mm)

Beam: 22.47

Max Draft: 7' 3" (2.2mm)

Cruise Speed: 23 Knots Kts. (26 MPH)

Max Speed: 26 Knots Kts. (30 MPH)

Our experienced yacht broker, Andrey Shestakov, will help you choose and buy a yacht that best suits your needs **BALANDRAU — MAIORA** from our catalogue. Presently, at Shestakov Yacht Sales Inc., we have a wide variety of yachts available on our sale's list. We also work in close contact with all the big yacht manufacturers from all over the world.

If you would like to buy a yacht **BALANDRAU — MAIORA** or would like help answering any questions concerning purchasing, selling or chartering a yacht, please call **+1(954)274-4435**

TABLE OF CONTENTS

TABLE OF CONTENTS	2
SPECIFICATIONS	3
Overview	3
Basic Information	3
Dimensions	3
Speed, Capacities and Weight	3
Accommodations	4
Hull and Deck Information	4
Engine Information	4
PHOTOS	5
CONTACTS	11
Contact details	11
Telephones	11
Office hours	11
Address	11

SPECIFICATIONS

Overview

Balandrau is this exceptional motor yacht, built by Fipa Italian Yachts and Maiora as model 31DP in 2009. In 2018 she received a major refit that included important interior and technical improvements. Excellence, beauty and passion, unique traits of the Maiora brand, are incredibly integrated in the Balandrau. The modern-style décor, with great attention to lighting and the choice of soft-coloured furniture, gives it a welcoming and elegant atmosphere. Externally, she features a stunning design that elegantly fuses the streamlined and the sporty, while offering ample deck space for sunbathing. The yacht can accommodate up to 8 guests in its 4 luxurious en-suite cabins, including a Master Suite, a VIP cabin, a double cabin and a Twin cabin; served by 4/5 crew. Powered by two MTU 16V M93 engines of 2,350 HP each, she reaches a cruising speed of 23 knots and a top speed of 26 knots.

Basic Information

Category: Flybridge

Sub Category: Flybridge

Model Year: 2009

Year Built: 2009

Country: Spain

Dimensions

LOA: 107' (32.6mm)

Beam: 22.47

Max Draft: 7' 3" (2.2mm)

Speed, Capacities and Weight

Cruise Speed: 23 Knots Kts. (26 MPH)

Max Speed: 26 Knots Kts. (30 MPH)

Water Capacity: 2500 Gallons

Fuel Capacity: 4711.51 Gal Gallons

Accommodations

Total Cabins: 4

Sleeps: 8

Total Heads: 5

Crew Cabin: 5

Crew Heads: 2

Hull and Deck Information

Hull Material: GRP

Hull Configuration: Planing

Exterior Designer: Fipa Italiana Yachts Srl - **Interior Designer:** Roberto del Re
Maiora

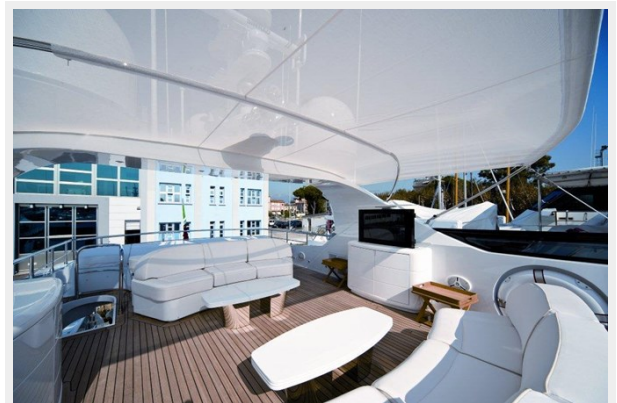
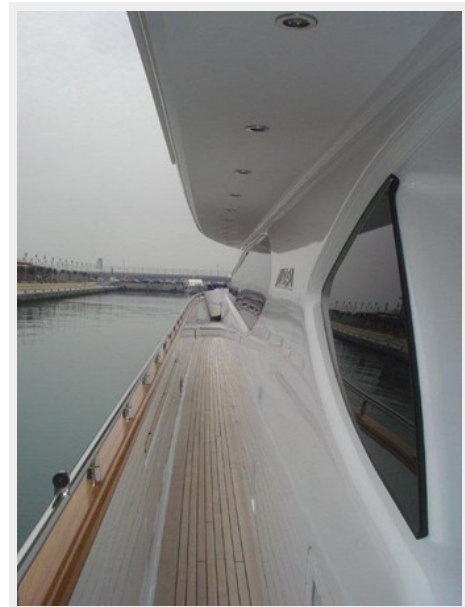
Engine Information

Engines: 2

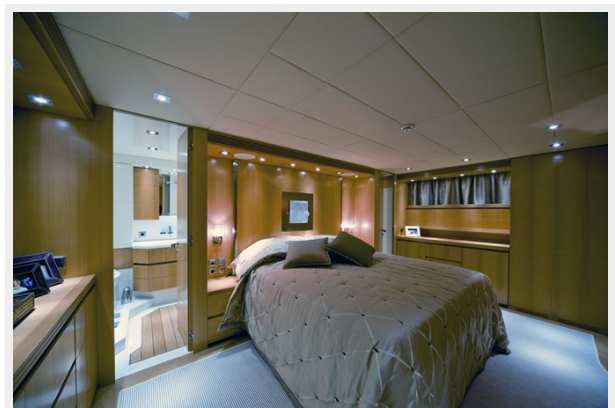
Manufacturer: MTU

Fuel Type: Diesel

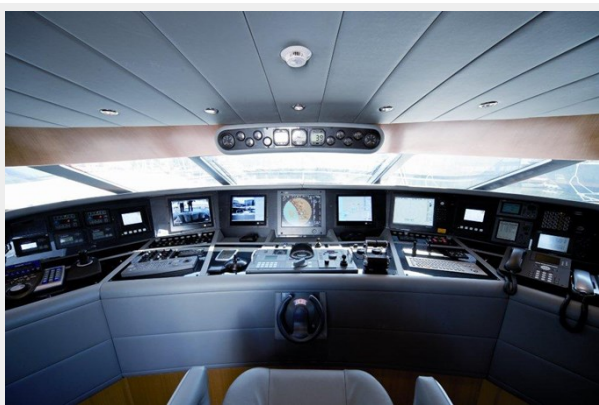
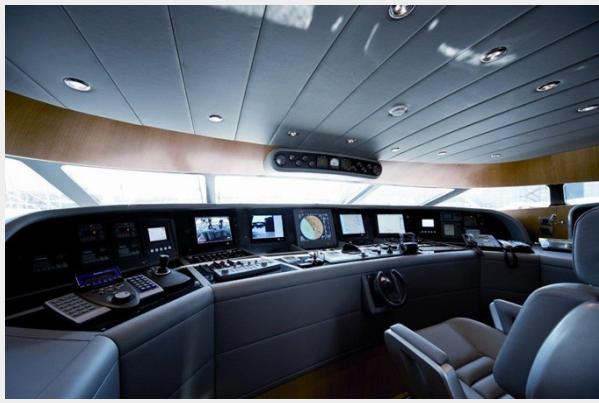
PHOTOS

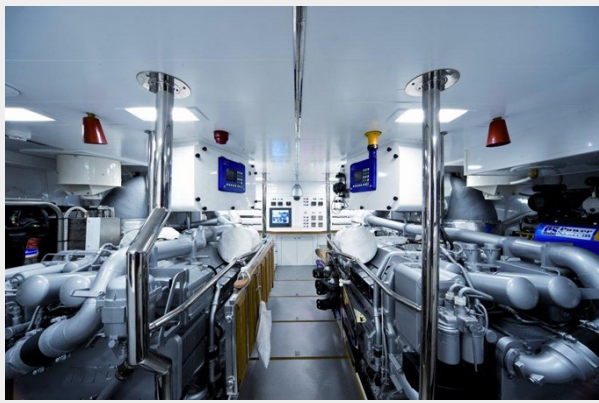












CONTACTS

Andrey Shestakov, leading yacht broker of the sales department of Shestakov Yacht Sales Inc. Shestakov Yacht Sales Inc., the official representative of the Miami/Fort Lauderdale FL headquarters.

Contact details

Email: andrey@shestakovyachtsales.com

Web: shestakovyachtsales.com/en/

Telephones

USA: +1(954)274-4435

Office hours

Monday – Saturday: **9:00 - 21:00** EDT

Sunday: **closed**

Address



Harbour Towne Marina, 850 NE 3rd St,
STE 213, Dania, FL 33004