

## 1997 BAJA .38 SPECIAL — BAJA



**Builder:** BAJA

**Year Built:** 1997

**Model:** high performance

**Price:** \$49,900 USD

**Location:** United States

**LOA:** 37' 6" (11.43mm)

**Beam:** 9.25

**Max Draft:** 3' 1" (0.94mm)

Our experienced yacht broker, Andrey Shestakov, will help you choose and buy a yacht that best suits your needs 1997 Baja .38 Special — BAJA from our catalogue. Presently, at Shestakov Yacht Sales Inc., we have a wide variety of yachts available on our sale's list. We also work in close contact with all the big yacht manufacturers from all over the world.

If you would like to buy a yacht 1997 Baja .38 Special — BAJA or would like help answering any questions concerning purchasing, selling or chartering a yacht, please call +1(954)274-4435

# TABLE OF CONTENTS

---

TABLE OF CONTENTS	2
SPECIFICATIONS	6
Overview	6
Basic Information	6
Dimensions	6
Speed, Capacities and Weight	6
Accommodations	6
Hull and Deck Information	7
Engine Information	7
PHOTOS	8
From Above	8
Port Profile	8
Helm	8
Cockpit Looking FWD	8
Engine Access	8
Port AFT Quarter	8
Looking FWD	9
Port FWD Quarter	9
From the Bow	9
Foredeck	9
BOW	9
STBD AFT Quarter	9
Transom	10
Outdrives	10
BOW	10
Outdrives	10
Cockpit Looking AFT	10
Ready to Roll	10

Cockpit FWD-Walk thru Windshield	11
AFT Seating	11
Cockpit to Port	11
Wet Bart with Refrigerator	11
Helm Seating	11
Helm Seating	11
Companion Seating	12
Cockpit Storage	12
Under Port Cockpit Seating	12
Cockpit Storage	12
Throttle Controls	12
Under STBD Cockpit Seating	12
Trim Indicators	13
Trim Controls	13
STBD Gauges	13
Upper Gauges	13
Rocker Switches	13
Port Gauges	13
Garmin	14
VHF	14
Cabin Looking FWD	14
Cabin Looking AFT	14
FWD Bunk	14
Cabin to Port	14
Cabin Storage	15
Cabin to Port	15
Galley Refrigerator	15
AC Control	15
Princess Burner	16

Microwave	16
Sink	16
Built in Blender	16
Head	17
Head	17
Sink in Head	17
Engine Hatch	17
Engine Compartment	17
Engines	17
Port Engine Placard	18
Port Engine	18
STBD Engine Placard	18
STBD Engine	18
Generator Hours	19
Generator	19
DC Electrical Panel	19
AC Electrical Panel	19
Shore Power Connections	19
Pro Charger-Battery Charger	19
JL Audio Amp	20
Clarion Head Unit	20
Bose Amp	20
Sirius Unit	20
Old TV	20
Trailer	20
Trailer	21
<b>CONTACTS</b>	<b>22</b>
Contact details	22
Telephones	22

---

Office hours	22
Address	22

---

# SPECIFICATIONS

---

## Overview

---

1997 Baja .38 Special Great boat with 470 hours. FRESH WATER. Brand New outdrives have not seen water yet. . Triple Axle Trailer included. Larger Engines 415HP Merc 502 MAGs with ProChargers. K Planes. Cabin with a Head, Full Galley and V Berth. A Generator with 242 hrs. The Cabin has Air Conditioning/Heat. Galley has a Norcold Refrigerator, Microwave and One Burner Cook Top. Cockpit has lots of space and a wet bar with a second Refrigerator. Owner is changing life style and just acquired a Sea Ray 460. This Baja must go.

## Basic Information

---

**Category:** high performance

**Sub Category:** High Performance

**Model Year:** 1997

**Year Built:** 1997

**Country:** United States

## Dimensions

---

**LOA:** 37' 6" (11.43mm)

**Beam:** 9.25

**Max Draft:** 3' 1" (0.94mm)

## Speed, Capacities and Weight

---

**Water Capacity:** 37 Gallons

**Holding Tank:** 20 Gal Gallons

**Fuel Capacity:** 220 Gal Gallons

## Accommodations

---

**Total Heads:** 1

---

## Hull and Deck Information

---

**Hull Material:** Fiberglass

**Deck Material:** Fiberglass

**Hull Configuration:** Deep Vee

---

## Engine Information

---

**Engines:** 2

**Manufacturer:** Mercruiser

**Engine Type:** I/O

**Fuel Type:** Gas

# PHOTOS

**Port Profile**



**From Above**



**Cockpit Looking FWD**



**Helm**



**Engine Access**



**Port AFT Quarter**





**Port FWD Quarter**



**Looking FWD**



**From the Bow**



**Foredeck**



**BOW**



**STBD AFT Quarter**



**Transom**



**Outdrives**



**BOW**



**Outdrives**



**Ready to Roll**



**Cockpit Looking AFT**



**Cockpit FWD-Walk thru Windshield**



**AFT Seating**



**Cockpit to Port**



**Wet Bart with Refrigerator**



**Helm Seating**



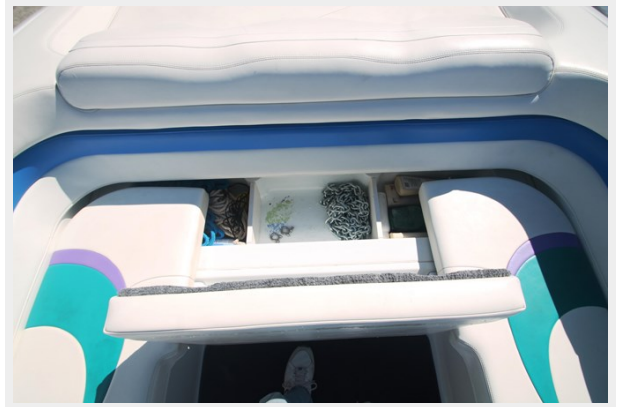
**Helm Seating**



**Companion Seating**



**Cockpit Storage**



**Cockpit Storage**



**Under Port Cockpit Seating**



**Under STBD Cockpit Seating**



**Throttle Controls**



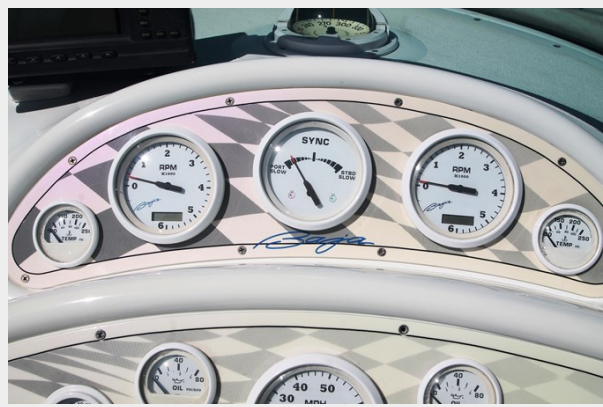
### Trim Controls



### Trim Indicators



### Upper Gauges



### STBD Gauges



### Port Gauges



### Rocker Switches



**Garmin**



**VHF**



**Cabin Looking FWD**



**Cabin Looking AFT**



**FWD Bunk**



**Cabin to Port**



**Cabin to Port**



**Cabin Storage**



**AC Control**



**Galley Refrigerator**



**Microwave**



**Princess Burner**



**Sink**



**Built in Blender**





**Head**



**Head**



**Sink in Head**



**Engine Hatch**



**Engine Compartment**



**Engines**



**Port Engine**



**Port Engine Placard**



**STBD Engine**



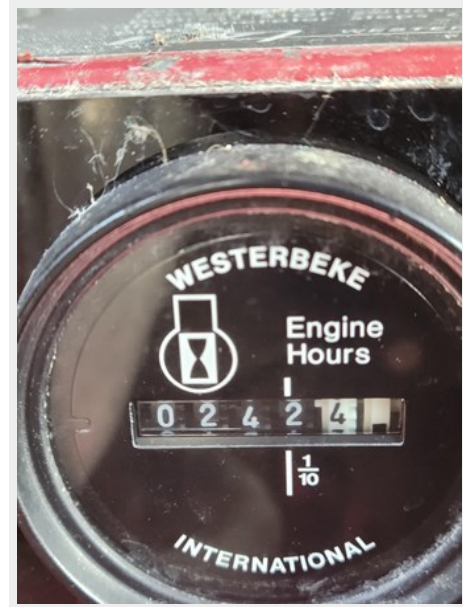
**STBD Engine Placard**



### Generator



### Generator Hours



### DC Electrical Panel



### AC Electrical Panel



### Shore Power Connections



### Pro Charger-Battery Charger



**Clarion Head Unit**



**JL Audio Amp**



**Bose Amp**



**Sirius Unit**



**Old TV**



**Trailer**



## Trailer



# CONTACTS

---

Andrey Shestakov, leading yacht broker of the sales department of Shestakov Yacht Sales Inc. Shestakov Yacht Sales Inc., the official representative of the Miami/Fort Lauderdale FL headquarters.

## Contact details

---

Email: [andrey@shestakovyachtsales.com](mailto:andrey@shestakovyachtsales.com)

Web: [shestakovyachtsales.com/en/](http://shestakovyachtsales.com/en/)

## Telephones

---

USA: +1(954)274-4435

## Office hours

---

Monday – Saturday: **9:00 - 21:00** EDT

Sunday: **closed**

## Address

---



Harbour Towne Marina, 850 NE 3rd St,  
STE 213, Dania, FL 33004