

HARDWORK — MAINSHIP



Builder: MAINSHIP

Year Built: 2004

Model: trawler

Price: Price on Application

Location: United States

LOA: 40' (12.19mm)

Beam: 14.16

Max Draft: 3' 3" (0.99mm)

Our experienced yacht broker, Andrey Shestakov, will help you choose and buy a yacht that best suits your needs **Hardwork — MAINSHIP** from our catalogue. Presently, at Shestakov Yacht Sales Inc., we have a wide variety of yachts available on our sale's list. We also work in close contact with all the big yacht manufacturers from all over the world.

If you would like to buy a yacht **Hardwork — MAINSHIP** or would like help answering any questions concerning purchasing, selling or chartering a yacht, please call **+1(954)274-4435**

TABLE OF CONTENTS

TABLE OF CONTENTS	2
SPECIFICATIONS	5
Overview	5
Basic Information	5
Dimensions	5
Speed, Capacities and Weight	5
Accommodations	5
Hull and Deck Information	6
Engine Information	6
PHOTOS	7
9143535_20231121123224345_1_XLARGE	7
9143535_20231121123226930_1_XLARGE	7
9143535_20231121123237709_1_XLARGE	7
9143535_20231121123241368_1_XLARGE	7
9143535_20231121123248397_1_XLARGE	8
9143535_20231121123252525_1_XLARGE	8
9143535_20231121123245414_1_XLARGE	8
9143535_20231121123255679_1_XLARGE	8
9143535_20231121123307665_1_XLARGE	8
9143535_20231121123310719_1_XLARGE	8
9143535_20231121123314789_1_XLARGE	9
9143535_20231121123317915_1_XLARGE	9
9143535_20231121123321869_1_XLARGE	9
9143535_20231121123324984_1_XLARGE	9
9143535_20231121123329051_1_XLARGE	9
9143535_20231121123259834_1_XLARGE	9
9143535_20231121123303624_1_XLARGE	10
9143535_20231121123337044_1_XLARGE	10

9143535_20231121123349576_1_XLARGE	10
9143535_20231121123340084_1_XLARGE	10
9143535_20231121123353314_1_XLARGE	10
9143535_20231121123357281_1_XLARGE	10
9143535_20231121123400301_1_XLARGE	11
9143535_20231121123332939_1_XLARGE	11
9143535_20231121123404340_1_XLARGE	11
9143535_20231121123407467_1_XLARGE	11
9144866_20231128062807631_1_XLARGE	11
9144866_20231128062817992_1_XLARGE	11
9144866_20231128062839163_1_XLARGE	12
9144866_20231128062849179_1_XLARGE	12
9144866_20231128062938048_1_XLARGE	12
9144866_20231128062948993_1_XLARGE	12
9144866_20231128062859330_1_XLARGE	12
9144866_20231128062908661_1_XLARGE	12
9144866_20231128062927349_1_XLARGE	13
9144866_20231128062919588_1_XLARGE	13
9144866_20231128063112637_1_XLARGE	13
9144866_20231128063100608_1_XLARGE	13
9144866_20231128063039600_1_XLARGE	13
9144866_20231128063027477_1_XLARGE	13
9144866_20231128063008298_1_XLARGE	14
9144866_20231128063050245_1_XLARGE	14
9144866_20231128062958372_1_XLARGE	14
9143535_20231121123534189_1_XLARGE	14
9143535_20231121123420860_1_XLARGE	15
9143535_20231121123449969_1_XLARGE	15
9143535_20231121123508883_1_XLARGE	15

9143535_20231121123446018_1_XLARGE	15
9143535_20231121123425019_1_XLARGE	15
9143535_20231121123516322_1_XLARGE	15
9143535_20231121123438594_1_XLARGE	16
9143535_20231121123512435_1_XLARGE	16
9143535_20231121123519361_1_XLARGE	16
9143535_20231121123441906_1_XLARGE	16
9143535_20231121123500091_1_XLARGE	16
9143535_20231121123432567_1_XLARGE	16
9143535_20231121123523503_1_XLARGE	17
9143535_20231121123610628_1_XLARGE	17
9143535_20231121123557825_1_XLARGE	17
9143535_20231121123554827_1_XLARGE	17
9143535_20231121123550783_1_XLARGE	17
9143535_20231121124922844_1_XLARGE	17
9143535_20231121123538628_1_XLARGE	18
9143535_20231121123542780_1_XLARGE	18
9143535_20231121123546706_1_XLARGE	18
9143535_20231121123601834_1_XLARGE	18
9144866_20231127065749868_1_XLARGE	18
CONTACTS	19
Contact details	19
Telephones	19
Office hours	19
Address	19

SPECIFICATIONS

Overview

One of the most desirable models of the Mainship Fleet. Twin Yanmar diesel engines, 2 stations, 2 staterooms and head. A true veteran of the Great Loop, you will not find one better equipped for a hassle free cruise and is ready for the islands. Already a veteran of the Great Loop. She is packed with everything you'll need to cruise the coastal waters, islands of the south Florida, Bahamas, ICW, or anywhere you'll want to take her. With a brand new complete Flybridge enclosure to maintained Yanmar Diesels. Recent update to Complete Garmin Electronics: Radar/GPS/Auto Pilot.

Basic Information

Category: trawler

Sub Category: Sedan

Model Year: 2004

Year Built: 2004

Country: United States

Dimensions

LOA: 40' (12.19mm)

Beam: 14.16

Max Draft: 3' 3" (0.99mm)

Speed, Capacities and Weight

Water Capacity: 130 Gallons

Holding Tank: 47 Gal Gallons

Fuel Capacity: 300 Gal Gallons

Accommodations

Total Cabins: 2

Hull and Deck Information

Hull Material: Fiberglass

Engine Information

Engines: 2

Manufacturer: Yanmar

Engine Type: Inboard

Fuel Type: Diesel

PHOTOS

9143535_20231121123224345_1_XLARGE



9143535_20231121123226930_1_XLARGE



9143535_20231121123237709_1_XLARGE



9143535_20231121123241368_1_XLARGE



9143535_20231121123248397_1_XLARGE



9143535_20231121123252525_1_XLARGE



9143535_20231121123245414_1_XLARGE



9143535_20231121123255679_1_XLARGE



9143535_20231121123307665_1_XLARGE



9143535_20231121123310719_1_XLARGE



9143535_20231121123314789_1_XLARGE



9143535_20231121123317915_1_XLARGE



9143535_20231121123321869_1_XLARGE



9143535_20231121123324984_1_XLARGE



9143535_20231121123329051_1_XLARGE



9143535_20231121123259834_1_XLARGE



9143535_20231121123303624_1_XLARGE



9143535_20231121123337044_1_XLARGE



9143535_20231121123349576_1_XLARGE



9143535_20231121123340084_1_XLARGE



9143535_20231121123353314_1_XLARGE



9143535_20231121123357281_1_XLARGE



9143535_20231121123400301_1_XLARGE



9143535_20231121123332939_1_XLARGE



9143535_20231121123404340_1_XLARGE



9143535_20231121123407467_1_XLARGE



9144866_20231128062807631_1_XLARGE



9144866_20231128062817992_1_XLARGE



9144866_20231128062839163_1_XLARGE



9144866_20231128062849179_1_XLARGE



9144866_20231128062938048_1_XLARGE



9144866_20231128062948993_1_XLARGE



9144866_20231128062859330_1_XLARGE



9144866_20231128062908661_1_XLARGE



9144866_20231128062927349_1_XLARGE



9144866_20231128062919588_1_XLARGE



9144866_20231128063112637_1_XLARGE



9144866_20231128063100608_1_XLARGE



9144866_20231128063039600_1_XLARGE



9144866_20231128063027477_1_XLARGE



9144866_20231128063008298_1_XLARGE

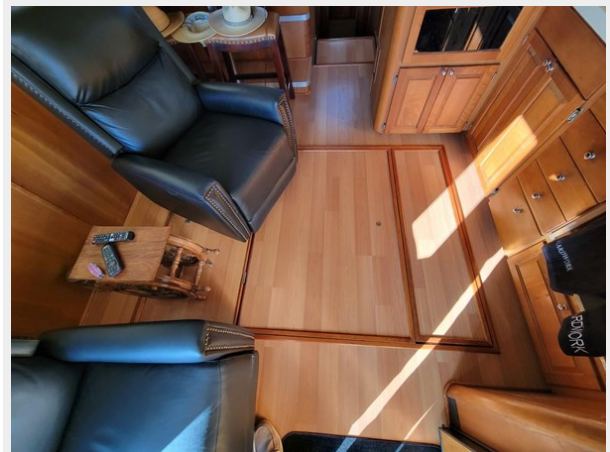
9144866_20231128063050245_1_XLARGE



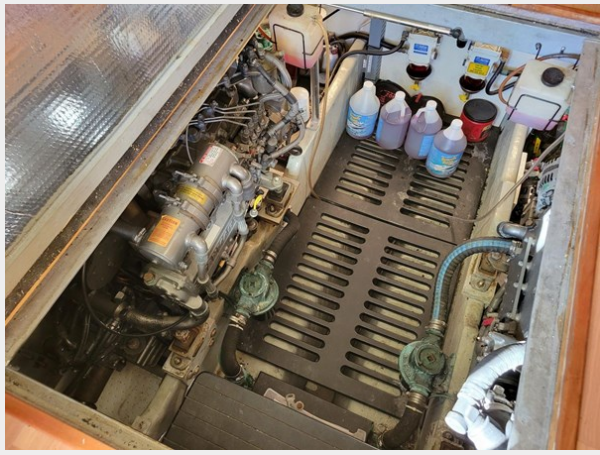
9144866_20231128062958372_1_XLARGE



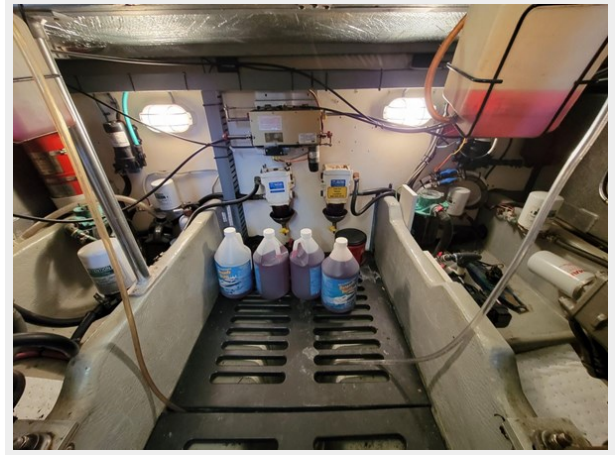
9143535_20231121123534189_1_XLARGE



9143535_20231121123420860_1_XLARGE

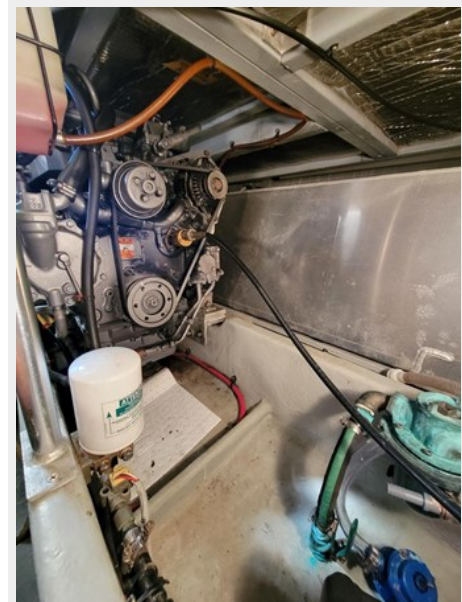


9143535_20231121123449969_1_XLARGE



9143535_20231121123508883_1_XLARGE

9143535_20231121123446018_1_XLARGE



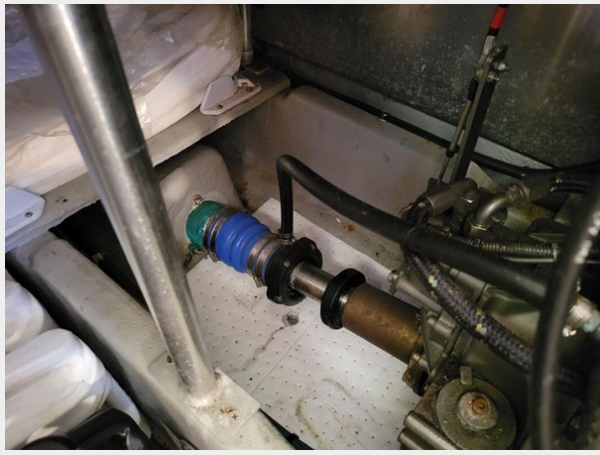
9143535_20231121123425019_1_XLARGE



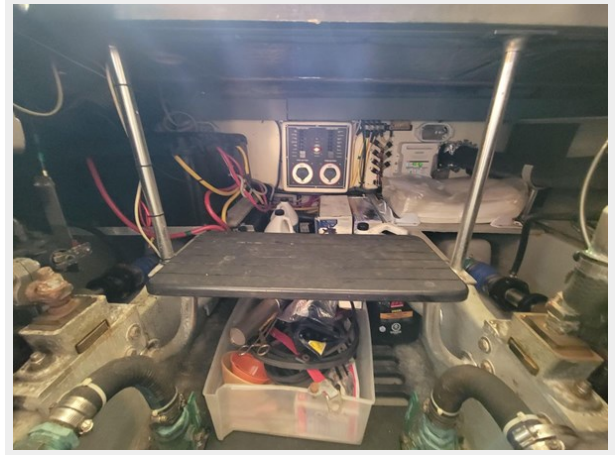
9143535_20231121123516322_1_XLARGE



9143535_20231121123438594_1_XLARGE



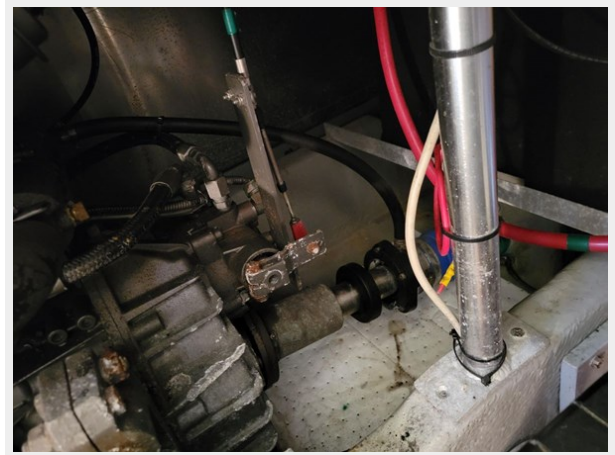
9143535_20231121123512435_1_XLARGE



9143535_20231121123519361_1_XLARGE



9143535_20231121123441906_1_XLARGE



9143535_20231121123500091_1_XLARGE

9143535_20231121123432567_1_XLARGE



9143535_20231121123523503_1_XLARGE



9143535_20231121123610628_1_XLARGE



9143535_20231121123557825_1_XLARGE



9143535_20231121123554827_1_XLARGE



9143535_20231121123550783_1_XLARGE



9143535_20231121124922844_1_XLARGE



9143535_20231121123538628_1_XLARGE



9143535_20231121123542780_1_XLARGE



9143535_20231121123546706_1_XLARGE



9143535_20231121123601834_1_XLARGE



9144866_20231127065749868_1_XLARGE



CONTACTS

Andrey Shestakov, leading yacht broker of the sales department of Shestakov Yacht Sales Inc. Shestakov Yacht Sales Inc., the official representative of the Miami/Fort Lauderdale FL headquarters.

Contact details

Email: andrey@shestakovyachtsales.com

Web: shestakovyachtsales.com/en/

Telephones

USA: +1(954)274-4435

Office hours

Monday – Saturday: **9:00 - 21:00** EDT

Sunday: **closed**

Address



Harbour Towne Marina, 850 NE 3rd St,
STE 213, Dania, FL 33004