

## **ANTANI — SEA RAY**



**Builder:** SEA RAY

**Year Built:** 2014

**Model:** cruiser

**Price:** \$188,000 USD

**Location:** United States

**LOA:** 33' 4" (10.16mm)

**Beam:** 10.5

**Min Draft:** 2' 10" (0.85mm)

**Max Draft:** 3' 5" (1.04mm)

Our experienced yacht broker, Andrey Shestakov, will help you choose and buy a yacht that best suits your needs **ANTANI — SEA RAY** from **our catalogue**. Presently, at **Shestakov Yacht Sales Inc.**, we have a wide variety of yachts available on **our sale's list**. We also work in close contact with all the big **yacht manufacturers** from all over the world.

If you would like to buy a yacht **ANTANI — SEA RAY** or would like help answering any questions concerning purchasing, selling or chartering a yacht, please call **+1(954)274-4435**

# TABLE OF CONTENTS

TABLE OF CONTENTS	2
SPECIFICATIONS	4
Overview	4
Basic Information	4
Dimensions	4
Speed, Capacities and Weight	4
Accommodations	4
Hull and Deck Information	5
Engine Information	5
PHOTOS	6
330-SUNDANCER-SEA-RAY-2014-YACHTSBLUE-OUTDOOR-SPACE	6
330-SUNDANCER-SEA-RAY-2014-YACHTSBLUE-HELM-AREA	6
330-SUNDANCER-SEA-RAY-2014-YACHTSBLUE-COCKPIT-SEATING	6
330-SUNDANCER-SEA-RAY-2014-YACHTSBLUE-MAIN-CABIN	6
330-SUNDANCER-SEA-RAY-2014-YACHTSBLUE-BOW-PROFILE	6
330-SUNDANCER-SEA-RAY-2014-YACHTSBLUE-BOW-AREA	6
330-SUNDANCER-SEA-RAY-2014-YACHTSBLUE-BOW	7
330-SUNDANCER-SEA-RAY-2014-YACHTSBLUE-STERN-PROFILE	7
330-SUNDANCER-SEA-RAY-2014-YACHTSBLUE-OVERHEAD-PROFILE	7
330-SUNDANCER-SEA-RAY-2014-YACHTSBLUE-RUNNING-PROFILE	7
330-SUNDANCER-SEA-RAY-2014-YACHTSBLUE-HELM-SEAT	8
330-SUNDANCER-SEA-RAY-2014-YACHTSBLUE-ENGINE-CONTROLS	8
330-SUNDANCER-SEA-RAY-2014-YACHTSBLUE-HELM	8
330-SUNDANCER-SEA-RAY-2014-YACHTSBLUE-NAVIGATION	8
330-SUNDANCER-SEA-RAY-2014-YACHTSBLUE-JOYSTICK	8
330-SUNDANCER-SEA-RAY-2014-YACHTSBLUE-COCKPIT-SINK	8
330-SUNDANCER-SEA-RAY-2014-YACHTSBLUE-OUTSIDE-GRILL	9
330-SUNDANCER-SEA-RAY-2014-YACHTSBLUE-DRINK-HOLDERS	9

330-SUNDANCER-SEA-RAY-2014-YACHTSBLUE-HELM-SEAT-DETAIL	9
330-SUNDANCER-SEA-RAY-2014-YACHTSBLUE-SPEAKERS	9
330-SUNDANCER-SEA-RAY-2014-YACHTSBLUE-SALON-SOFA	9
330-SUNDANCER-SEA-RAY-2014-YACHTSBLUE-SALON-TV	9
330-SUNDANCER-SEA-RAY-2014-YACHTSBLUE-SALON-TV-AUX-CONNECTION	10
330-SUNDANCER-SEA-RAY-2014-YACHTSBLUE-GALLEY	10
330-SUNDANCER-SEA-RAY-2014-YACHTSBLUE-COOKTOP	10
330-SUNDANCER-SEA-RAY-2014-YACHTSBLUE-GALLEY-2	10
330-SUNDANCER-SEA-RAY-2014-YACHTSBLUE-FRIDGE	10
330-SUNDANCER-SEA-RAY-2014-YACHTSBLUE-AFT-CABIN-STORAGE	10
330-SUNDANCER-SEA-RAY-2014-YACHTSBLUE-AFT-CABIN-TV	11
330-SUNDANCER-SEA-RAY-2014-YACHTSBLUE-AFT-CABIN	11
330-SUNDANCER-SEA-RAY-2014-YACHTSBLUE-ELECTRICAL-PANEL	11
330-SUNDANCER-SEA-RAY-2014-YACHTSBLUE-FORWARD-BED	11
330-SUNDANCER-SEA-RAY-2014-YACHTSBLUE-FORWARD-STORAGE	11
330-SUNDANCER-SEA-RAY-2014-YACHTSBLUE-FORWARD-CABIN	11
330-SUNDANCER-SEA-RAY-2014-YACHTSBLUE-CLOSET	12
330-SUNDANCER-SEA-RAY-2014-YACHTSBLUE-HEAD-SINK	12
330-SUNDANCER-SEA-RAY-2014-YACHTSBLUE-HEAD	12
330-SUNDANCER-SEA-RAY-2014-YACHTSBLUE-ENGINE-ROOM	12
330-SUNDANCER-SEA-RAY-2014-YACHTSBLUE-MAIN-ENGINES	13
330-SUNDANCER-SEA-RAY-2014-YACHTSBLUE-GENERATOR	13
330-SUNDANCER-SEA-RAY-2014-YACHTSBLUE-BATTERIES	13
CONTACTS	14
Contact details	14
Telephones	14
Office hours	14
Address	14

---

# SPECIFICATIONS

---

## Overview

---

The 2014 Sea Ray 330 Sundancer is appreciated for its blend of luxury, functionality, and solid performance, making it a popular choice among boating enthusiasts. Antani has been lift stored and well cared for with low usage and hours. This is a great opportunity to step into a great condition 33 SEA RAY SUNDANCER that's ready to cruise!

## Basic Information

---

**Category:** cruiser

**Sub Category:** Express

**Model Year:** 2014

**Year Built:** 2014

**Country:** United States

## Dimensions

---

**LOA:** 33' 4" (10.16mm)

**Beam:** 10.5

**Min Draft:** 2' 10" (0.85mm)

**Max Draft:** 3' 5" (1.04mm)

## Speed, Capacities and Weight

---

**Gross Tonnage:** 16 Pounds

**Water Capacity:** 35 Gallons

**Holding Tank:** 28 Gal Gallons

**Fuel Capacity:** 200 Gal Gallons

## Accommodations

---

**Total Cabins:** 2

**Total Berths:** 4

**Sleeps:** 4

**Total Heads:** 1

---

## Hull and Deck Information

---

**Hull Material:** Fiberglass

**Deck Material:** Fiberglass

**Hull Configuration:** Monohull

**Hull Color:** White

**Hull Designer:** Sea Ray

**Interior Designer:** Sea Ray

---

## Engine Information

---

**Engines:** 2

**Manufacturer:** Mercruiser

**Engine Type:** I/O

**Fuel Type:** Gas/Petrol

# PHOTOS

**330-SUNDANCER-SEA-RAY-2014-  
YACHTSBLUE-OUTDOOR-SPACE**



**330-SUNDANCER-SEA-RAY-2014-  
YACHTSBLUE-HELM-AREA**



**330-SUNDANCER-SEA-RAY-2014-  
YACHTSBLUE-COCKPIT-SEATING**



**330-SUNDANCER-SEA-RAY-2014-  
YACHTSBLUE-MAIN-CABIN**



**330-SUNDANCER-SEA-RAY-2014-  
YACHTSBLUE-BOW-PROFILE**



**330-SUNDANCER-SEA-RAY-2014-  
YACHTSBLUE-BOW-AREA**



**330-SUNDANCER-SEA-RAY-2014-  
YACHTSBLUE-BOW**



**330-SUNDANCER-SEA-RAY-2014-  
YACHTSBLUE-STERN-PROFILE**



**330-SUNDANCER-SEA-RAY-2014-  
YACHTSBLUE-OVERHEAD-PROFILE**



**330-SUNDANCER-SEA-RAY-2014-  
YACHTSBLUE-RUNNING-PROFILE**



**330-SUNDANCER-SEA-RAY-2014-  
YACHTSBLUE-HELM-SEAT**



**330-SUNDANCER-SEA-RAY-2014-  
YACHTSBLUE-ENGINE-CONTROLS**



**330-SUNDANCER-SEA-RAY-2014-  
YACHTSBLUE-HELM**



**330-SUNDANCER-SEA-RAY-2014-  
YACHTSBLUE-NAVIGATION**



**330-SUNDANCER-SEA-RAY-2014-  
YACHTSBLUE-JOYSTICK**



**330-SUNDANCER-SEA-RAY-2014-  
YACHTSBLUE-COCKPIT-SINK**





**330-SUNDANCER-SEA-RAY-2014-  
YACHTSBLUE-OUTSIDE-GRILL**



**330-SUNDANCER-SEA-RAY-2014-  
YACHTSBLUE-DRINK-HOLDERS**



**330-SUNDANCER-SEA-RAY-2014-  
YACHTSBLUE-HELM-SEAT-DETAIL**



**330-SUNDANCER-SEA-RAY-2014-  
YACHTSBLUE-SPEAKERS**



**330-SUNDANCER-SEA-RAY-2014-  
YACHTSBLUE-SALON-SOFA**



**330-SUNDANCER-SEA-RAY-2014-  
YACHTSBLUE-SALON-TV**



**330-SUNDANCER-SEA-RAY-2014-  
YACHTSBLUE-SALON-TV-AUX-  
CONNECTION**



**330-SUNDANCER-SEA-RAY-2014-  
YACHTSBLUE-GALLEY**



**330-SUNDANCER-SEA-RAY-2014-  
YACHTSBLUE-COOKTOP**



**330-SUNDANCER-SEA-RAY-2014-  
YACHTSBLUE-GALLEY-2**



**330-SUNDANCER-SEA-RAY-2014-  
YACHTSBLUE-FRIDGE**



**330-SUNDANCER-SEA-RAY-2014-  
YACHTSBLUE-AFT-CABIN-STORAGE**



**330-SUNDANCER-SEA-RAY-2014-  
YACHTSBLUE-AFT-CABIN-TV**



**330-SUNDANCER-SEA-RAY-2014-  
YACHTSBLUE-AFT-CABIN**



**330-SUNDANCER-SEA-RAY-2014-  
YACHTSBLUE-ELECTRICAL-PANEL**



**330-SUNDANCER-SEA-RAY-2014-  
YACHTSBLUE-FORWARD-BED**



**330-SUNDANCER-SEA-RAY-2014-  
YACHTSBLUE-FORWARD-STORAGE**



**330-SUNDANCER-SEA-RAY-2014-  
YACHTSBLUE-FORWARD-CABIN**



**330-SUNDANCER-SEA-RAY-2014-  
YACHTSBLUE-CLOSET**



**330-SUNDANCER-SEA-RAY-2014-  
YACHTSBLUE-HEAD-SINK**



**330-SUNDANCER-SEA-RAY-2014-  
YACHTSBLUE-HEAD**



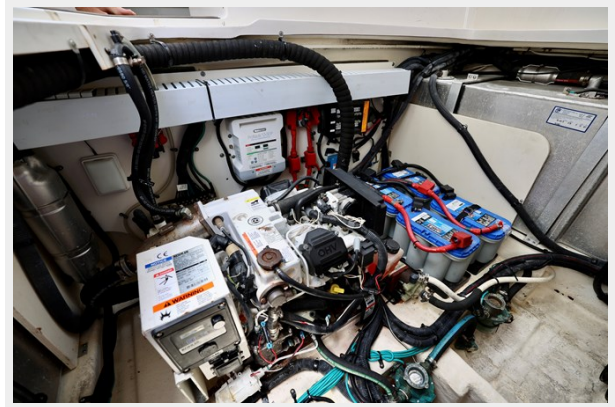
**330-SUNDANCER-SEA-RAY-2014-  
YACHTSBLUE-ENGINE-ROOM**



**330-SUNDANCER-SEA-RAY-2014-  
YACHTSBLUE-MAIN-ENGINES**



**330-SUNDANCER-SEA-RAY-2014-  
YACHTSBLUE-GENERATOR**



**330-SUNDANCER-SEA-RAY-2014-YACHTSBLUE-BATTERIES**



# CONTACTS

---

Andrey Shestakov, leading yacht broker of the sales department of Shestakov Yacht Sales Inc. Shestakov Yacht Sales Inc., the official representative of the Miami/Fort Lauderdale FL headquarters.

## Contact details

---

Email: **andrey@shestakovyachtsales.com**

Web: [shestakovyachtsales.com/en/](http://shestakovyachtsales.com/en/)

## Telephones

---

USA: **+1(954)274-4435**

## Office hours

---

Monday – Saturday: **9:00 - 21:00** EDT

Sunday: **closed**

## Address

---



Harbour Towne Marina, 850 NE 3rd St, STE 213, Dania, FL 33004