

SWEET CHARIOT — BENETEAU



Builder: BENETEAU

Year Built: 2007

Model: Sloop

Price: \$250,000 USD

Location: United States

LOA: 51' 4" (15.65mm)

Beam: 16.33

Max Draft: 6' 6" (1.98mm)

Cruise Speed: 8 Knots Kts. (9 MPH)

Our experienced yacht broker, Andrey Shestakov, will help you choose and buy a yacht that best suits your needs **Sweet Chariot — BENETEAU** from **our catalogue**. Presently, at **Shestakov Yacht Sales Inc.**, we have a wide variety of yachts available on **our sale's list**. We also work in close contact with all the big **yacht manufacturers** from all over the world.

If you would like to buy a yacht **Sweet Chariot — BENETEAU** or would like help answering any questions concerning purchasing, selling or chartering a yacht, please call **+1(954)274-4435**

TABLE OF CONTENTS

TABLE OF CONTENTS	2
SPECIFICATIONS	4
Overview	4
Basic Information	4
Dimensions	4
Speed, Capacities and Weight	4
Accommodations	4
Hull and Deck Information	5
Engine Information	5
PHOTOS	6
Exterior	6
Exterior	6
Exterior	6
Exterior	6
Exterior	7
Exterior	7
Exterior	7
Cockpit	7
Cockpit	7
Cockpit	7
Enclosure- A	8
Enclosure- Aft	8
Enclosure- Aft	8
Enclosure- Aft	8
Enclosure- Aft	9
Cockpit Enclosure	9
Cockpit Enclosure	9
Deck	9

Salon	9
Salon	9
Salon	10
Salon	10
Companionway	10
Salon	10
Cabin	11
Cabin	11
Head	11
Cabin	11
Head	12
Head	12
Engine	12
Engine	12
Engine	13
Engine	13
Exterior	13
CONTACTS	14
Contact details	14
Telephones	14
Office hours	14
Address	14

SPECIFICATIONS

Overview

The 2007 Beneteau Cyclades 50 is a spacious, French-built cruising monohull sailboat well-suited for large groups or families. Its 16+ foot beam provides about double the volume of other 50-footers, and some say it offers the highest level of comfort for its class.

This yacht offers exceptional value for money and includes all you might need for cruising. She is equipped with a new, fully enclosed bimini, solar panels, watermaker, genset, air con/heater, and more. She has been kept strictly for private use and maintained to the fullest degree. She is ready to embark on her next sailing adventure with her new owner, wherever the winds may take you!

Basic Information

Category: Sloop

Model Year: 2007

Year Built: 2007

Country: United States

Dimensions

LOA: 51' 4" (15.65mm)

Beam: 16.33

Max Draft: 6' 6" (1.98mm)

Speed, Capacities and Weight

Cruise Speed: 8 Knots Kts. (9 MPH)

Water Capacity: 980 Gallons

Fuel Capacity: 132.09 Gal Gallons

Accommodations

Total Cabins: 4

Total Heads: 4

Hull and Deck Information

Hull Material: Fiberglass

Deck Material: Fiberglass

Engine Information

Engines: 1

Manufacturer: Yanmar

Engine Type: Inboard

Fuel Type: Diesel

PHOTOS

Exterior



Exterior



Exterior



Exterior



Exterior



Exterior



Exterior



Cockpit



Cockpit



Cockpit



Enclosure- A



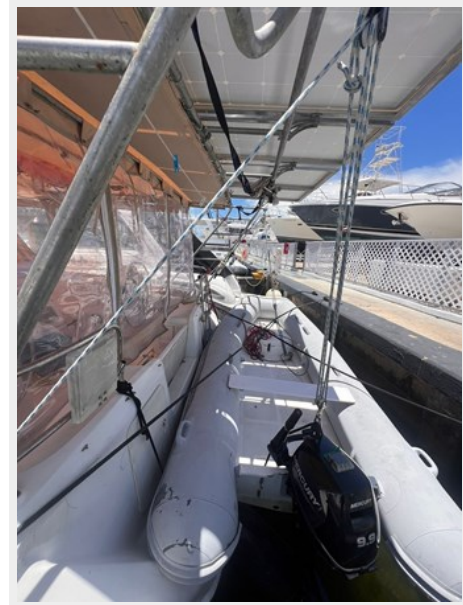
Enclosure- Aft



Enclosure- Aft



Enclosure- Aft



Enclosure- Aft



Cockpit Enclosure



Cockpit Enclosure



Deck



Salon



Salon



Salon

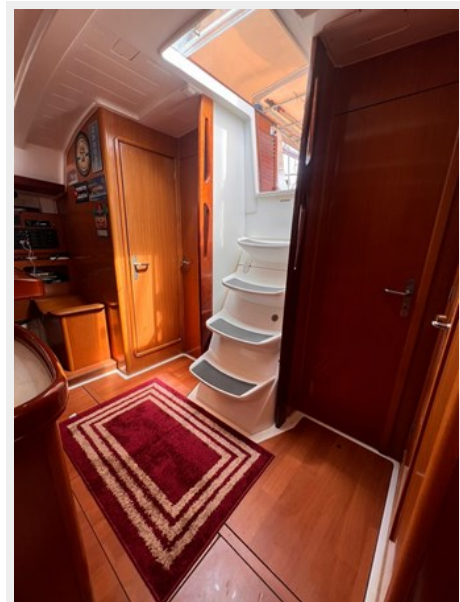


Salon



Companionway

Salon



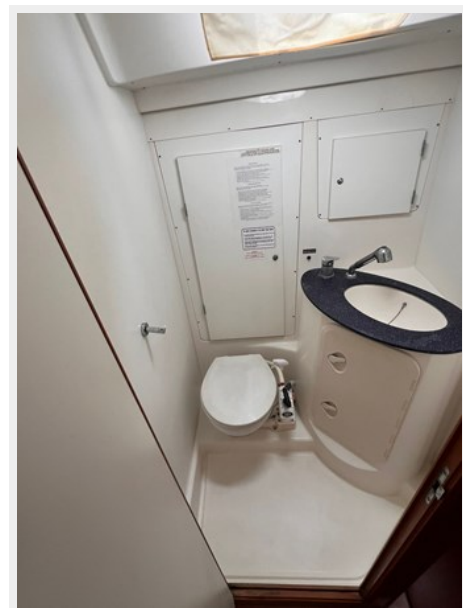
Cabin



Cabin



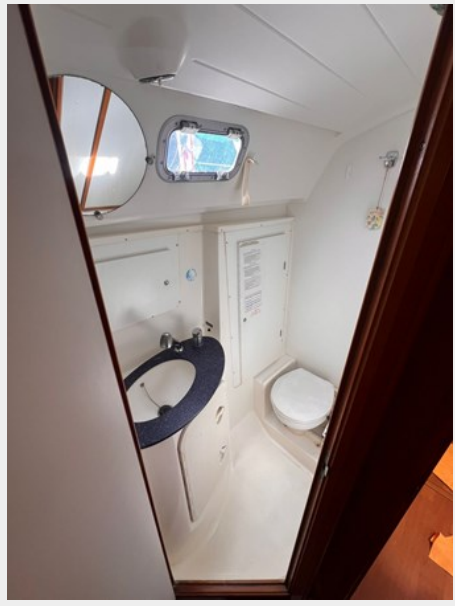
Head



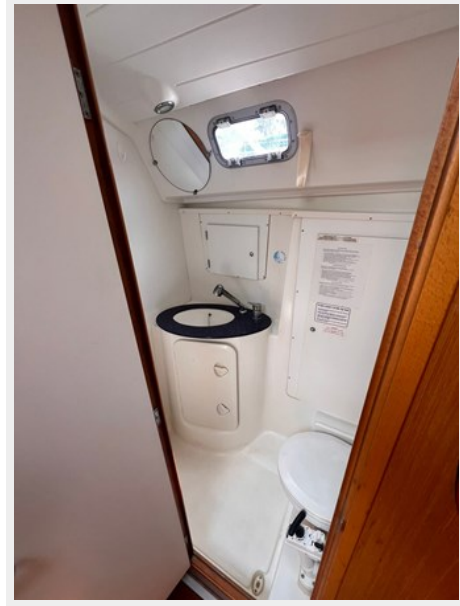
Cabin



Head



Head



Engine



Engine



Engine



Engine



Exterior



CONTACTS

Andrey Shestakov, leading yacht broker of the sales department of Shestakov Yacht Sales Inc. Shestakov Yacht Sales Inc., the official representative of the Miami/Fort Lauderdale FL headquarters.

Contact details

Email: **andrey@shestakovyachtsales.com**

Web: shestakovyachtsales.com/en/

Telephones

USA: **+1(954)274-4435**

Office hours

Monday – Saturday: **9:00 - 21:00** EDT

Sunday: **closed**

Address



Harbour Towne Marina, 850 NE 3rd St, STE 213, Dania, FL 33004