

GRACE ON WATER — VIKING



Builder: VIKING

Year Built: 1989

Model: Aft Cabin

Price: \$445,000 USD

Location: United States

LOA: 63' (19.2mm)

Beam: 17.33

Min Draft: 4' 9" (1.45mm)

Our experienced yacht broker, Andrey Shestakov, will help you choose and buy a yacht that best suits your needs **Grace on Water — VIKING** from **our catalogue**. Presently, at **Shestakov Yacht Sales Inc.**, we have a wide variety of yachts available on **our sale's list**. We also work in close contact with all the big **yacht manufacturers** from all over the world.

If you would like to buy a yacht **Grace on Water — VIKING** or would like help answering any questions concerning purchasing, selling or chartering a yacht, please call **+1(954)274-4435**

TABLE OF CONTENTS

TABLE OF CONTENTS	2
SPECIFICATIONS	6
Overview	6
Basic Information	6
Dimensions	6
Speed, Capacities and Weight	6
Accommodations	6
Hull and Deck Information	7
Engine Information	7
PHOTOS	8
2	8
3	8
4	8
5	8
6	8
7	8
8	9
9	9
10	9
11	9
12	9
13	9
14	10
15	10
16	10
17	10
18	10
19	10

20	11
21	11
22	11
23	11
24	11
25	11
26	12
27	12
28	12
29	12
30	12
31	12
32	13
33	13
34	13
35	13
36	13
37	13
38	14
39	14
40	14
41	14
42	14
43	14
44	15
45	15
46	15
47	15
48	15

49	15
50	16
51	16
52	16
53	16
54	16
55	16
56	17
57	17
58	17
59	17
60	17
61	17
62	18
63	18
64	18
65	18
66	18
67	18
68	19
69	19
70	19
71	19
72	19
73	19
74	20
75	20
76	20
77	20

78	20
79	20
80	21
81	21
82	21
83	21
84	21
85	21
CONTACTS	22
Contact details	22
Telephones	22
Office hours	22
Address	22

SPECIFICATIONS

Overview

Grace on Water had Full Engine Rebuilds in 2022. She is ready to Cruise or Live Aboard. This Wide Body Version of the Popular Viking 63 Motor Yacht offers a Full Beam Main Salon that opens to the aft deck. She is huge for a 63-footer. This is a 4 Stateroom 3 Head Layout, with a huge aft Full Beam Master and ensuite tub/shower. There are updated the appliances, electronics, floors, and counter tops, just to name a few of the many upgrades. She is powered by reliable Low Hour 8V92TA Detroit Diesels, an Onan Generator, and a Bow Thruster! Please check the FULL SPECS for more details, and give us a call for more information, and to schedule an appointment to have a look for yourself!

Basic Information

Category: Aft Cabin

Sub Category: Aft Cabin

Model Year: 1989

Year Built: 1989

Country: United States

Dimensions

LOA: 63' (19.2mm)

Beam: 17.33

Min Draft: 4' 9" (1.45mm)

Speed, Capacities and Weight

Water Capacity: 350 Gallons

Holding Tank: 80 Gal Gallons

Fuel Capacity: 1080 Gal Gallons

Accommodations

Total Cabins: 4

Total Heads: 3

Hull and Deck Information

Hull Material: Fiberglass

Engine Information

Engines: 2

Manufacturer: Detroit Diesel

Engine Type: Inboard

Fuel Type: Diesel

PHOTOS

2



3



4



5



6



7



8



9



10



11



12



13



14



15



16



17



18



19



20



21



22



23



24



25



26



27



28



29



30



31



32



33



34



35



36



37



38



39



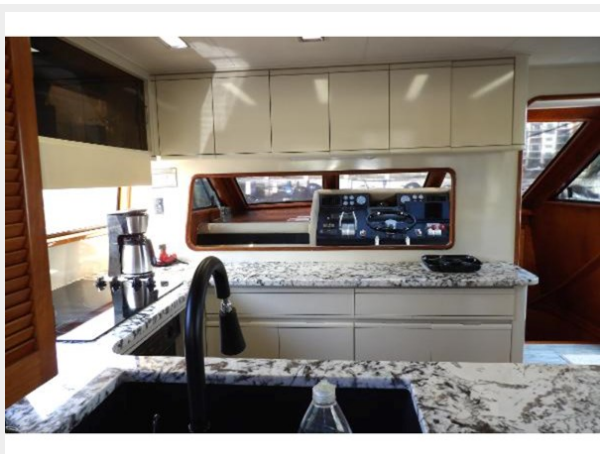
40



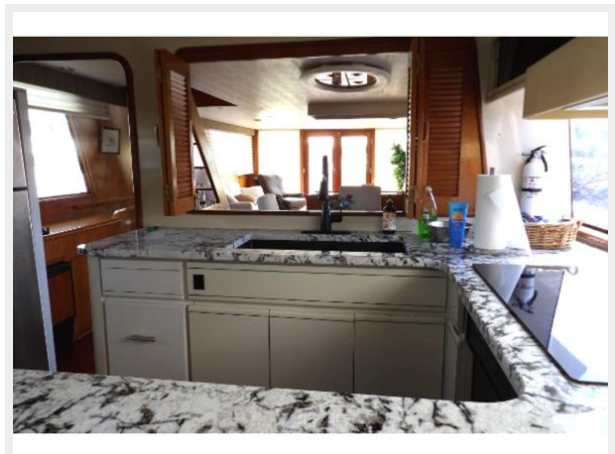
41



42



43



44



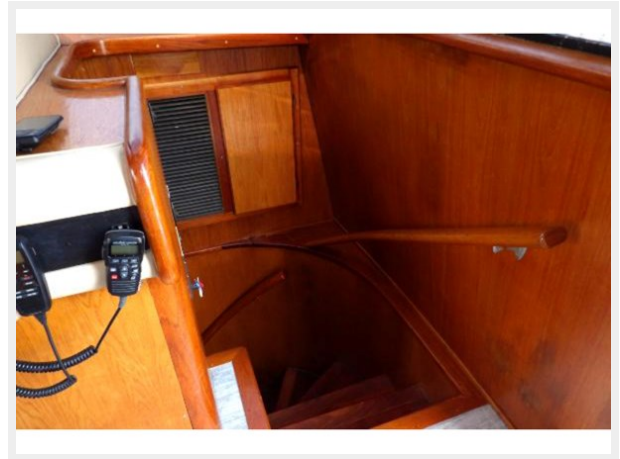
45



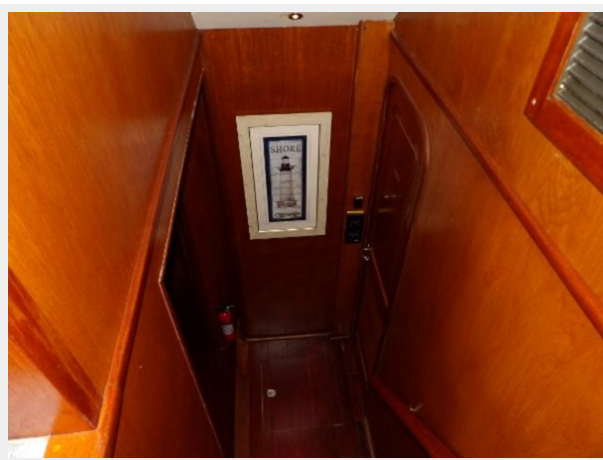
46



47



48



49



50



51



52



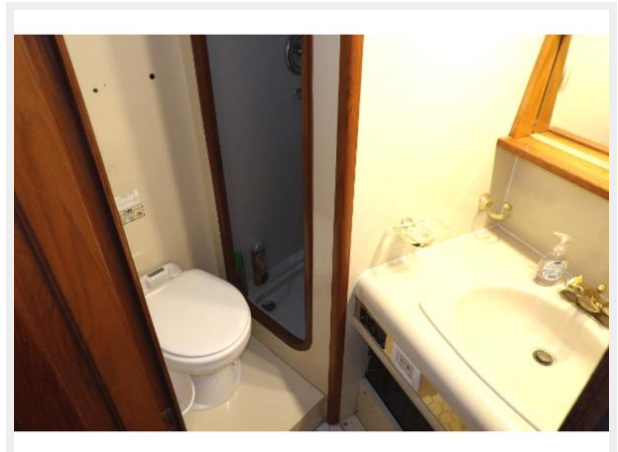
53



54



55



56



57



58



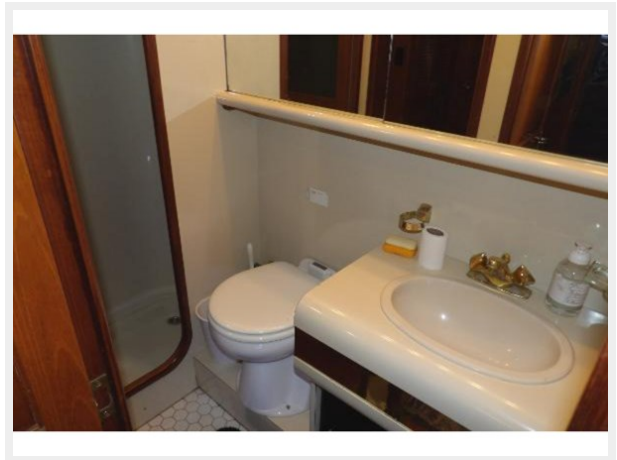
59



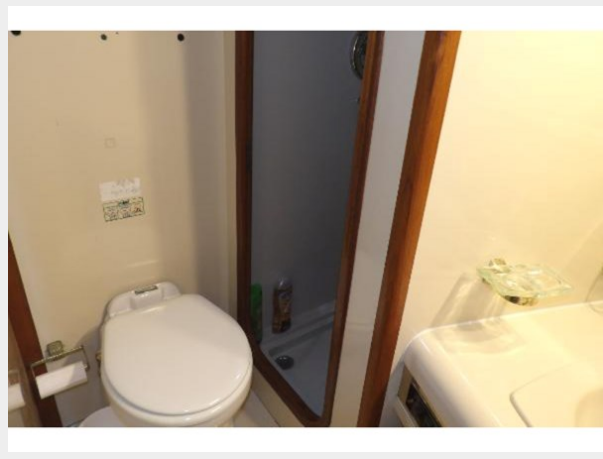
60



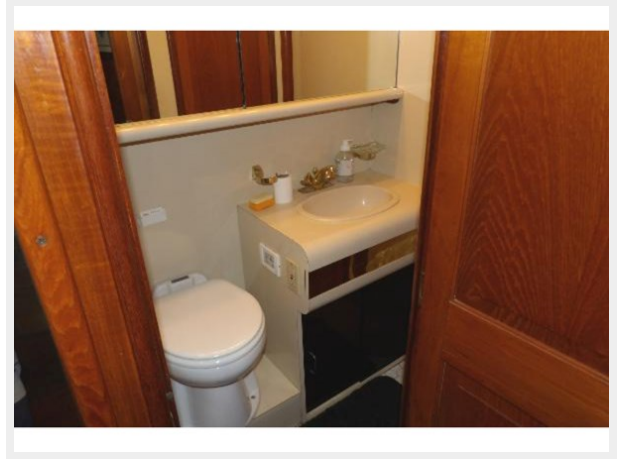
61



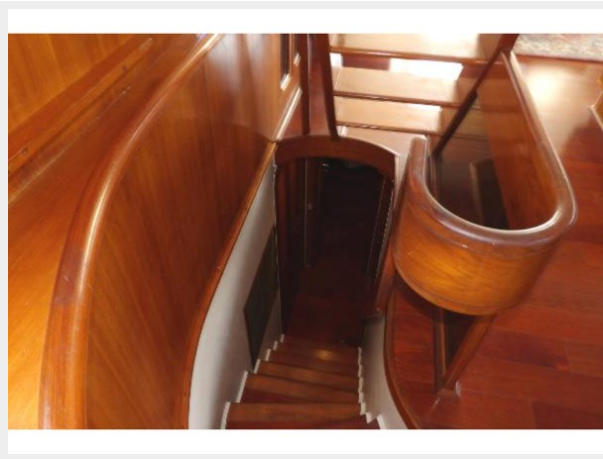
62



63



64



65



66



67



68



69



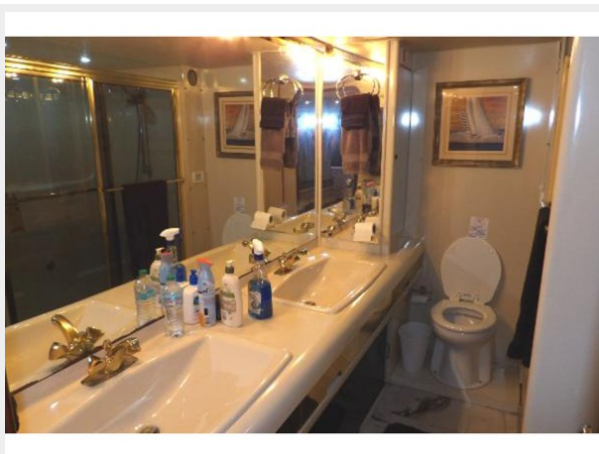
70



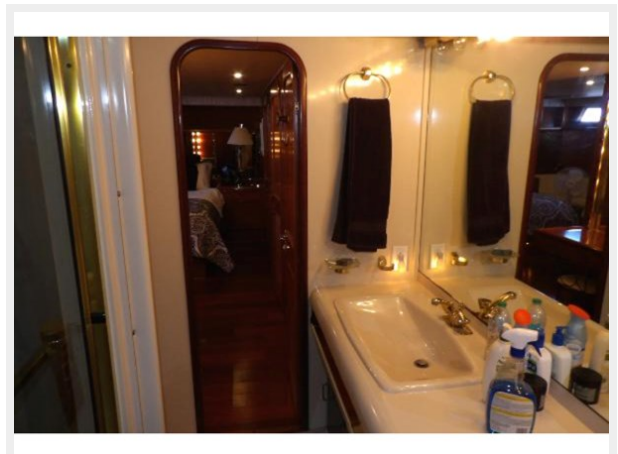
71



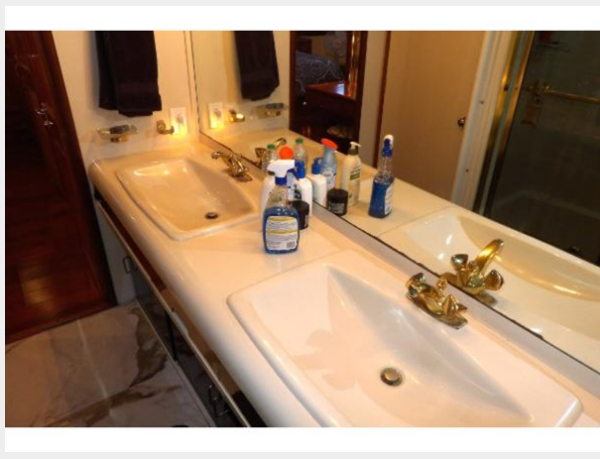
72



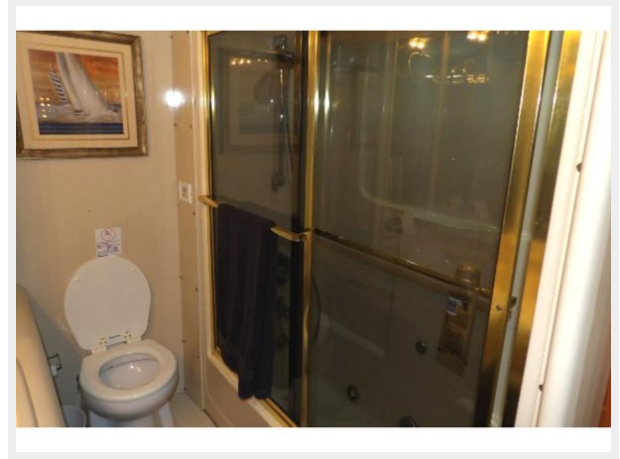
73



74



75



76



77



78



79



80



81



82



83



84



85



CONTACTS

Andrey Shestakov, leading yacht broker of the sales department of Shestakov Yacht Sales Inc. Shestakov Yacht Sales Inc., the official representative of the Miami/Fort Lauderdale FL headquarters.

Contact details

Email: **andrey@shestakovyachtsales.com**

Web: shestakovyachtsales.com/en/

Telephones

USA: **+1(954)274-4435**

Office hours

Monday – Saturday: **9:00 - 21:00** EDT

Sunday: **closed**

Address



Harbour Towne Marina, 850 NE 3rd St, STE 213, Dania, FL 33004