

GRIFFIN — TUG



Судостроитель: TUG

Год постройки: 1953

Модель: Tug Boat

Цена: \$199,000 USD

Местонахождение: United States

Длина общая: 65' (19.81mm)

Ширина: 19.5

Макс. осадка: 7' 6" (2.29mm)

Купить **Griffin — TUG** а также выбрать подходящую вам яхту из нашего **каталога яхт** вам поможет опытный яхтенный брокер Андрей Шестаков. На сегодняшний день компания **Shestakov Yacht Sales Inc.** имеет большое количество яхт в **собственном списке продаж**, а также тесно сотрудничает со всеми крупными **яхтенными производителями** по всему миру.

Для того чтобы купить яхту **Griffin — TUG** а также проконсультироваться по любому вопросу связанному с покупкой, продажей, чартером яхт позвоните по телефону **+7(918)465-66-44**.

ОГЛАВЛЕНИЕ

ОГЛАВЛЕНИЕ	2
ХАРАКТЕРИСТИКИ	3
Обзор	3
Основная информация	3
Размеры	3
Скорость, вместимость и масса	3
Размещение	4
Корпус и палуба	4
Информация о двигателе	4
ФОТОГРАФИИ	5
КОНТАКТЫ	21
Контактная информация	21
Телефоны	21
Время работы	21
Адрес	21

ХАРАКТЕРИСТИКИ

Обзор

General Description

US Army Tug, steel, built by Missouri Valley Steel, Levinworth Iron. She saw service in Vietnam under Mowhawk Valley's name. It was purchased for maritime equipment.

Actual Condition

This Tug went through a major conversion to make her a very comfortable live aboard with the ability to work as a tug. She should be capable for being approved by the USCG upon completion for commercial service. Layout set for master stateroom and head forward, then large galley area, then Saloon. Belowdecks laid out for head forward, bench and work area, then port and starboard staterooms. This is the old crews' quarters. It has been cleared out and ready for build. Up from there brings you just forward of the galley.

The ST's had no inside passage to the wheelhouse, but we now have inside stairs with the new wider wheelhouse. Materials, tools, equipment, line, etc are included.

Основная информация

Тип судна: Tug Boat

Подкатегория: Tug Boat

Модельный год: 1953

Год постройки: 1953

Страна: United States

Размеры

Длина общая: 65' (19.81mm)

Ширина: 19.5

Макс. осадка: 7' 6" (2.29mm)

Скорость, вместимость и масса

Вместимость воды: 900 Gallons

Объем топливного бака: 5844 Gal
Gallons

Размещение

Всего кают: 3

Всего ком. состава: 2

Корпус и палуба

Материал корпуса: Steel

Информация о двигателе

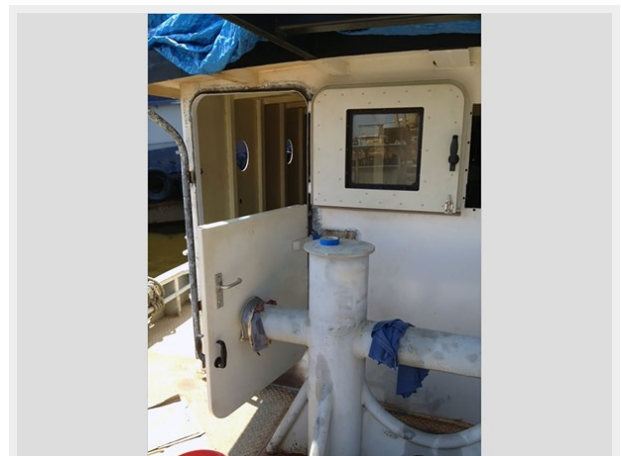
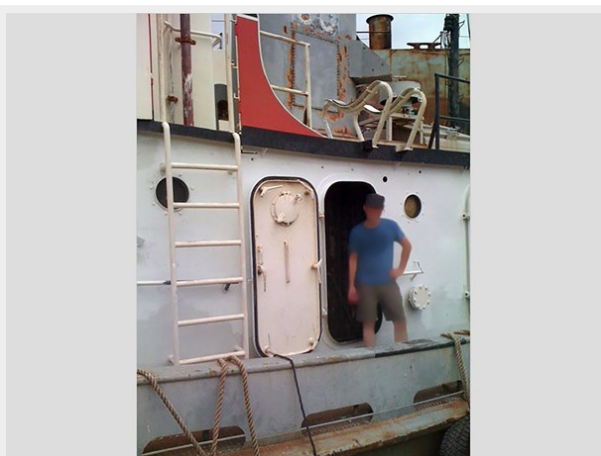
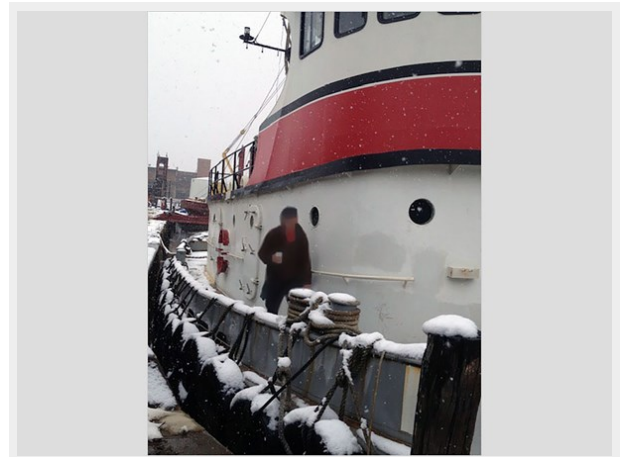
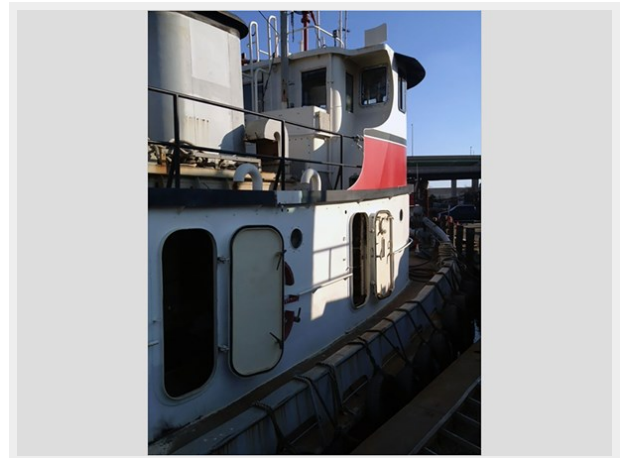
Двигатели: 1

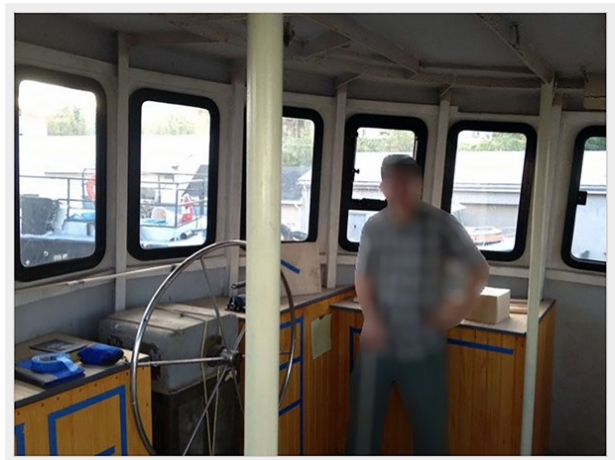
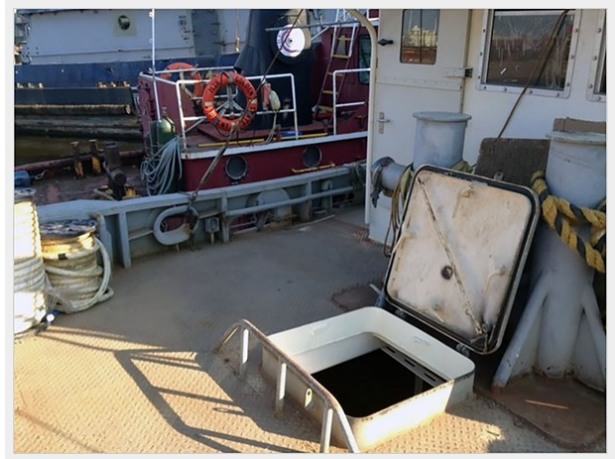
Производитель: Luggar

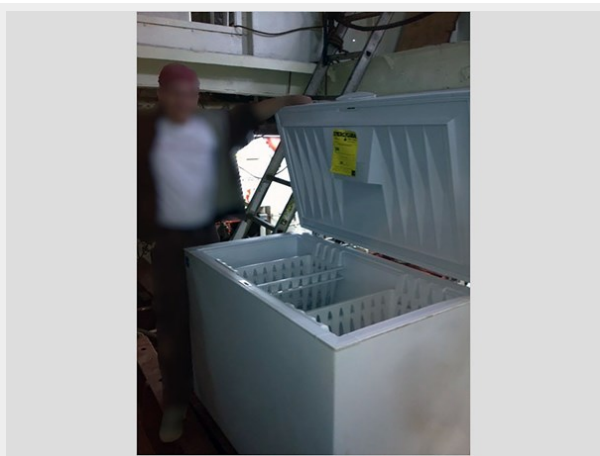
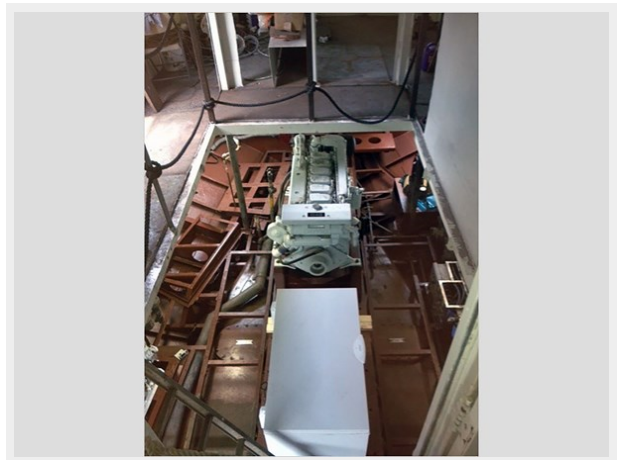
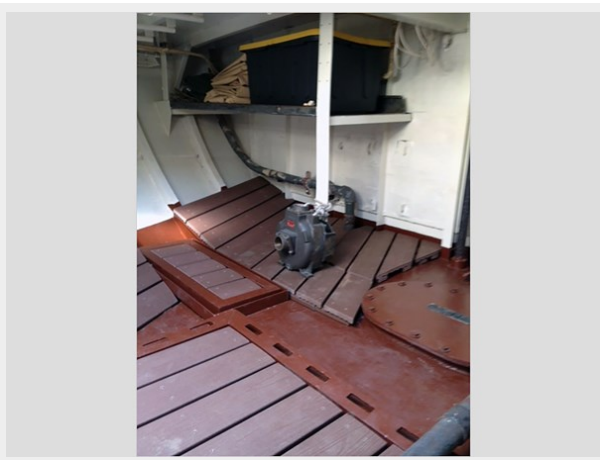
Тип двигателя: Inboard

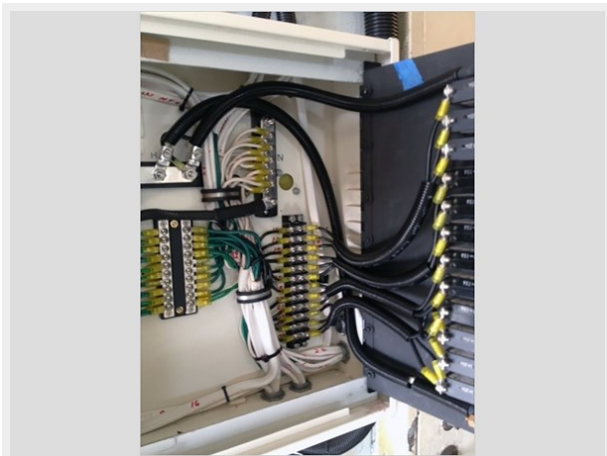
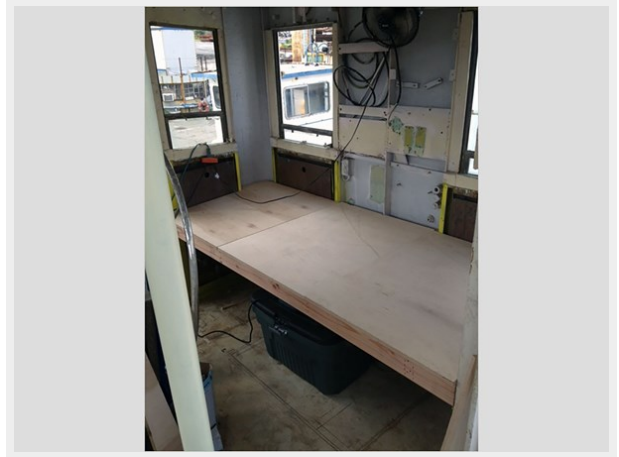
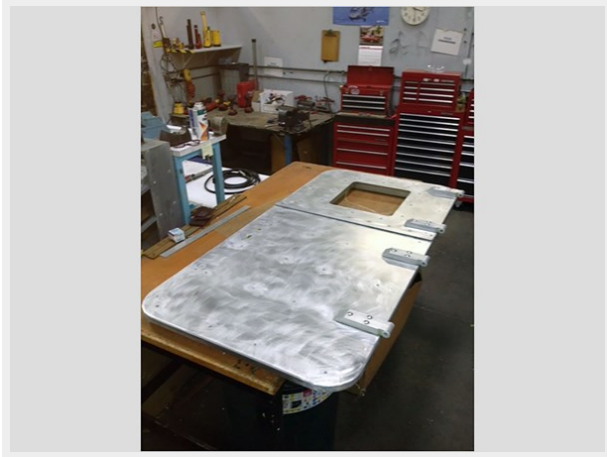
Тип топлива: Diesel

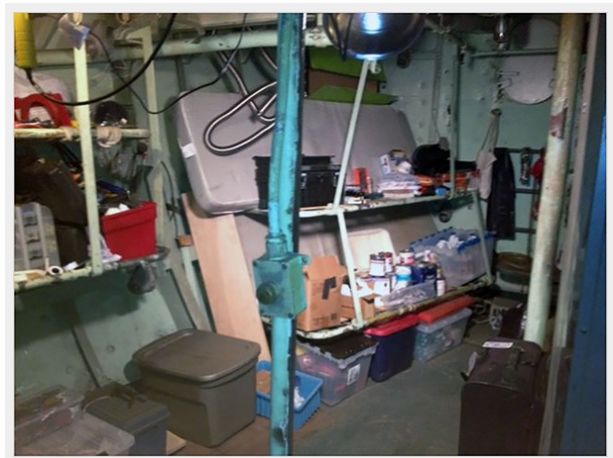
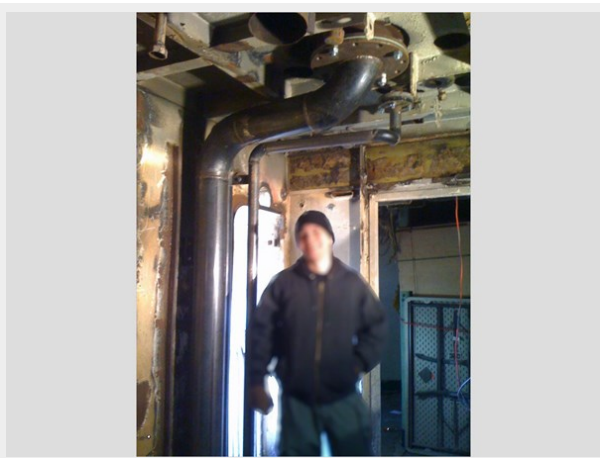
ФОТОГРАФИИ















12 kW 1800 RPM
10 kW 1500 RPM

Long life for any marine use
Whichever your marine use, without fail, you can rely on an investment in LUGGER diesel engines for high levels of performance, reliability, long life and low operating costs. You begin with a specially prepared hull and engine compartment with heavy-duty features you won't find in ordinary truck diesel. Freshwater that may get off in big savings over the engine's lifetime. On this strong foundation, we build a marine diesel that has proven itself on rugged commercial service and on leisure cruising.

More eyes to see you
The M843AL2 produces 700 horsepower at only 1700 rpm. A maximum torque of 2787 foot pounds. It runs through engineering and the best components to attain this level of performance without sacrificing life, cycle, or cost. It's rugged, dependable, and economical. A complete list of features start off the next page.

Get specific about fuel
Since fuel is your largest operational expense, it makes sense to reduce it as much as possible. Brake Specific Fuel Consumption (BSFC) is a measurement of the weight of fuel an engine burns to produce one horsepower for one hour. The M843 BSFC goes as low as 0.2133 lbs/hp-hr. Compare it to BSFC with any engine in its class.

Keeps engine room in-line
Extremely compact for its displacement and power, the M843 fits tight engine rooms. Unlike wall-to-wall dies, its in-line design with single exhaust and air mounted expansion tank, like installation simple. Twin engine vessels are made easier.

Get specific about fuel
The M843 is easy to service. All service points are on one side within easy reach. The in-line design allows room to move around the engine. Individual heads, replaceable wet-cylinder liners, fuel heaters and belts, and clean design simplify service. Since the engine only has six cylinders, instead of eight or ten, it has fewer parts to wear out and replace. All this means less time and money spent on repairs.

Electric clutch PTO for power out both ends
You can take up to 1000 lbs. of power off the front of the M843 with an electric clutch PTO (power take off). There is also a 20 hp hydraulic pump mount and another accessory drive. Use them to run hydraulics, power steering pumps, alternators, water pumps or other hydraulic auxiliary systems.

Tested, tested, tested
After the engine is built to your specification, it is dyno tested. Then the unit is installed and it runs again. This is just part of LUGGER's quality control program. When the engine is delivered it is ready to go to work.

- Jacket water aftercooler increases performance. Thermally controlled to avoid overcooling.
- DC electric reaps and circuit breaker.
- Washable basin air cleaner.



NORTHERN LIGHTS M843NW2

12 kW 1800 RPM
10 kW 1500 RPM

Long life for any marine use
Whichever your marine use, without fail, you can rely on an investment in LUGGER diesel engines for high levels of performance, reliability, long life and low operating costs. You begin with a specially prepared hull and engine compartment with heavy-duty features you won't find in ordinary truck diesel. Freshwater that may get off in big savings over the engine's lifetime. On this strong foundation, we build a marine diesel that has proven itself on rugged commercial service and on leisure cruising.

More eyes to see you
The M843AL2 produces 700 horsepower at only 1700 rpm. A maximum torque of 2787 foot pounds. It runs through engineering and the best components to attain this level of performance without sacrificing life, cycle, or cost. It's rugged, dependable, and economical. A complete list of features start off the next page.

Get specific about fuel
Since fuel is your largest operational expense, it makes sense to reduce it as much as possible. Brake Specific Fuel Consumption (BSFC) is a measurement of the weight of fuel an engine burns to produce one horsepower for one hour. The M843 BSFC goes as low as 0.2133 lbs/hp-hr. Compare it to BSFC with any engine in its class.

Keeps engine room in-line
Extremely compact for its displacement and power, the M843 fits tight engine rooms. Unlike wall-to-wall dies, its in-line design with single exhaust and air mounted expansion tank, like installation simple. Twin engine vessels are made easier.

Get specific about fuel
The M843 is easy to service. All service points are on one side within easy reach. The in-line design allows room to move around the engine. Individual heads, replaceable wet-cylinder liners, fuel heaters and belts, and clean design simplify service. Since the engine only has six cylinders, instead of eight or ten, it has fewer parts to wear out and replace. All this means less time and money spent on repairs.

Electric clutch PTO for power out both ends
You can take up to 1000 lbs. of power off the front of the M843 with an electric clutch PTO (power take off). There is also a 20 hp hydraulic pump mount and another accessory drive. Use them to run hydraulics, power steering pumps, alternators, water pumps or other hydraulic auxiliary systems.

Tested, tested, tested
After the engine is built to your specification, it is dyno tested. Then the unit is installed and it runs again. This is just part of LUGGER's quality control program. When the engine is delivered it is ready to go to work.

- Jacket water aftercooler increases performance. Thermally controlled to avoid overcooling.
- DC electric reaps and circuit breaker.
- Washable basin air cleaner.



L6140AL2

500 / 1800 rpm Continuous
600 / 2100 rpm Medium Duty
700 / 2100 rpm High Output

Long life for any marine use
Whichever your marine use, without fail, you can rely on an investment in LUGGER diesel engines for high levels of performance, reliability, long life and low operating costs. You begin with a specially prepared hull and engine compartment with heavy-duty features you won't find in ordinary truck diesel. Freshwater that may get off in big savings over the engine's lifetime. On this strong foundation, we build a marine diesel that has proven itself on rugged commercial service and on leisure cruising.

More eyes to see you
The L6140AL2 produces 500 horsepower at 1800 rpm. A maximum torque of 2787 foot pounds. It runs through engineering and the best components to attain this level of performance without sacrificing life, cycle, or cost. It's rugged, dependable, and economical. A complete list of features start off the next page.

Get specific about fuel
Since fuel is your largest operational expense, it makes sense to reduce it as much as possible. Brake Specific Fuel Consumption (BSFC) is a measurement of the weight of fuel an engine burns to produce one horsepower for one hour. The L6140 BSFC goes as low as 0.2133 lbs/hp-hr. Compare it to BSFC with any engine in its class.

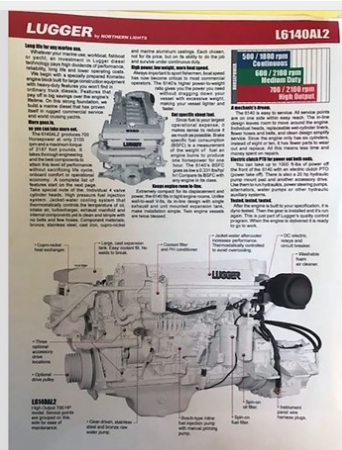
Keeps engine room in-line
Extremely compact for its displacement and power, the L6140 fits tight engine rooms. Unlike wall-to-wall dies, its in-line design with single exhaust and air mounted expansion tank, like installation simple. Twin engine vessels are made easier.

Get specific about fuel
The L6140 is easy to service. All service points are on one side within easy reach. The in-line design allows room to move around the engine. Individual heads, replaceable wet-cylinder liners, fuel heaters and belts, and clean design simplify service. Since the engine only has six cylinders, instead of eight or ten, it has fewer parts to wear out and replace. All this means less time and money spent on repairs.

Electric clutch PTO for power out both ends
You can take up to 1000 lbs. of power off the front of the L6140 with an electric clutch PTO (power take off). There is also a 20 hp hydraulic pump mount and another accessory drive. Use them to run hydraulics, power steering pumps, alternators, water pumps or other hydraulic auxiliary systems.

Tested, tested, tested
After the engine is built to your specification, it is dyno tested. Then the unit is installed and it runs again. This is just part of LUGGER's quality control program. When the engine is delivered it is ready to go to work.

- Jacket water aftercooler increases performance. Thermally controlled to avoid overcooling.
- DC electric reaps and circuit breaker.
- Washable basin air cleaner.



LUGGER L6140AL2

500 / 1800 rpm Continuous
600 / 2100 rpm Medium Duty
700 / 2100 rpm High Output

Long life for any marine use
Whichever your marine use, without fail, you can rely on an investment in LUGGER diesel engines for high levels of performance, reliability, long life and low operating costs. You begin with a specially prepared hull and engine compartment with heavy-duty features you won't find in ordinary truck diesel. Freshwater that may get off in big savings over the engine's lifetime. On this strong foundation, we build a marine diesel that has proven itself on rugged commercial service and on leisure cruising.

More eyes to see you
The L6140AL2 produces 500 horsepower at 1800 rpm. A maximum torque of 2787 foot pounds. It runs through engineering and the best components to attain this level of performance without sacrificing life, cycle, or cost. It's rugged, dependable, and economical. A complete list of features start off the next page.

Get specific about fuel
Since fuel is your largest operational expense, it makes sense to reduce it as much as possible. Brake Specific Fuel Consumption (BSFC) is a measurement of the weight of fuel an engine burns to produce one horsepower for one hour. The L6140 BSFC goes as low as 0.2133 lbs/hp-hr. Compare it to BSFC with any engine in its class.

Keeps engine room in-line
Extremely compact for its displacement and power, the L6140 fits tight engine rooms. Unlike wall-to-wall dies, its in-line design with single exhaust and air mounted expansion tank, like installation simple. Twin engine vessels are made easier.

Get specific about fuel
The L6140 is easy to service. All service points are on one side within easy reach. The in-line design allows room to move around the engine. Individual heads, replaceable wet-cylinder liners, fuel heaters and belts, and clean design simplify service. Since the engine only has six cylinders, instead of eight or ten, it has fewer parts to wear out and replace. All this means less time and money spent on repairs.

Electric clutch PTO for power out both ends
You can take up to 1000 lbs. of power off the front of the L6140 with an electric clutch PTO (power take off). There is also a 20 hp hydraulic pump mount and another accessory drive. Use them to run hydraulics, power steering pumps, alternators, water pumps or other hydraulic auxiliary systems.

Tested, tested, tested
After the engine is built to your specification, it is dyno tested. Then the unit is installed and it runs again. This is just part of LUGGER's quality control program. When the engine is delivered it is ready to go to work.

- Jacket water aftercooler increases performance. Thermally controlled to avoid overcooling.
- DC electric reaps and circuit breaker.
- Washable basin air cleaner.



LUGGER L6140AL2

500 / 1800 rpm Continuous
600 / 2100 rpm Medium Duty
700 / 2100 rpm High Output

Long life for any marine use
Whichever your marine use, without fail, you can rely on an investment in LUGGER diesel engines for high levels of performance, reliability, long life and low operating costs. You begin with a specially prepared hull and engine compartment with heavy-duty features you won't find in ordinary truck diesel. Freshwater that may get off in big savings over the engine's lifetime. On this strong foundation, we build a marine diesel that has proven itself on rugged commercial service and on leisure cruising.

More eyes to see you
The L6140AL2 produces 500 horsepower at 1800 rpm. A maximum torque of 2787 foot pounds. It runs through engineering and the best components to attain this level of performance without sacrificing life, cycle, or cost. It's rugged, dependable, and economical. A complete list of features start off the next page.

Get specific about fuel
Since fuel is your largest operational expense, it makes sense to reduce it as much as possible. Brake Specific Fuel Consumption (BSFC) is a measurement of the weight of fuel an engine burns to produce one horsepower for one hour. The L6140 BSFC goes as low as 0.2133 lbs/hp-hr. Compare it to BSFC with any engine in its class.

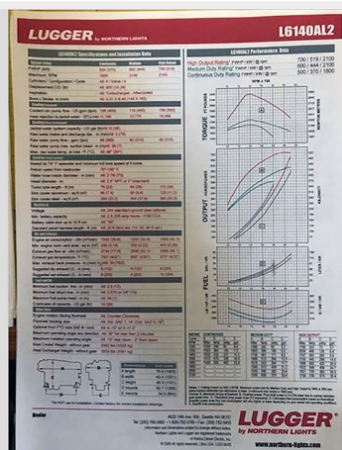
Keeps engine room in-line
Extremely compact for its displacement and power, the L6140 fits tight engine rooms. Unlike wall-to-wall dies, its in-line design with single exhaust and air mounted expansion tank, like installation simple. Twin engine vessels are made easier.

Get specific about fuel
The L6140 is easy to service. All service points are on one side within easy reach. The in-line design allows room to move around the engine. Individual heads, replaceable wet-cylinder liners, fuel heaters and belts, and clean design simplify service. Since the engine only has six cylinders, instead of eight or ten, it has fewer parts to wear out and replace. All this means less time and money spent on repairs.

Electric clutch PTO for power out both ends
You can take up to 1000 lbs. of power off the front of the L6140 with an electric clutch PTO (power take off). There is also a 20 hp hydraulic pump mount and another accessory drive. Use them to run hydraulics, power steering pumps, alternators, water pumps or other hydraulic auxiliary systems.

Tested, tested, tested
After the engine is built to your specification, it is dyno tested. Then the unit is installed and it runs again. This is just part of LUGGER's quality control program. When the engine is delivered it is ready to go to work.

- Jacket water aftercooler increases performance. Thermally controlled to avoid overcooling.
- DC electric reaps and circuit breaker.
- Washable basin air cleaner.



LUGGER L6140AL2

500 / 1800 rpm Continuous
600 / 2100 rpm Medium Duty
700 / 2100 rpm High Output

Long life for any marine use
Whichever your marine use, without fail, you can rely on an investment in LUGGER diesel engines for high levels of performance, reliability, long life and low operating costs. You begin with a specially prepared hull and engine compartment with heavy-duty features you won't find in ordinary truck diesel. Freshwater that may get off in big savings over the engine's lifetime. On this strong foundation, we build a marine diesel that has proven itself on rugged commercial service and on leisure cruising.

More eyes to see you
The L6140AL2 produces 500 horsepower at 1800 rpm. A maximum torque of 2787 foot pounds. It runs through engineering and the best components to attain this level of performance without sacrificing life, cycle, or cost. It's rugged, dependable, and economical. A complete list of features start off the next page.

Get specific about fuel
Since fuel is your largest operational expense, it makes sense to reduce it as much as possible. Brake Specific Fuel Consumption (BSFC) is a measurement of the weight of fuel an engine burns to produce one horsepower for one hour. The L6140 BSFC goes as low as 0.2133 lbs/hp-hr. Compare it to BSFC with any engine in its class.

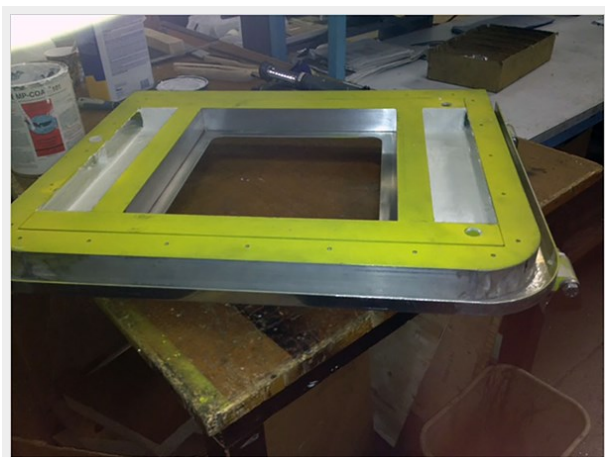
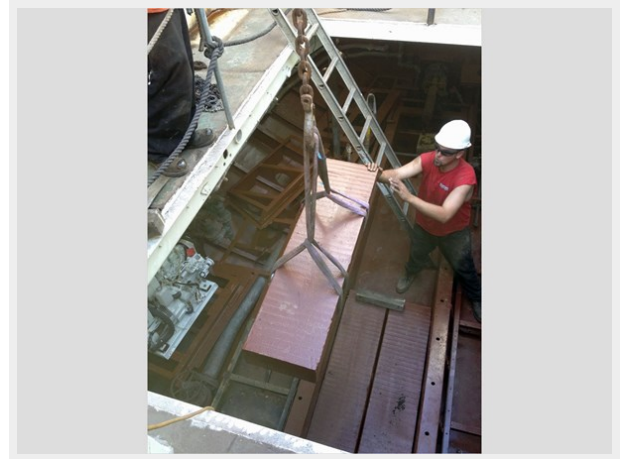
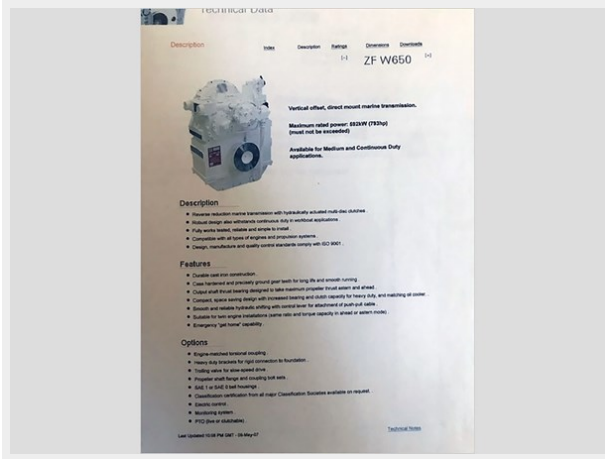
Keeps engine room in-line
Extremely compact for its displacement and power, the L6140 fits tight engine rooms. Unlike wall-to-wall dies, its in-line design with single exhaust and air mounted expansion tank, like installation simple. Twin engine vessels are made easier.

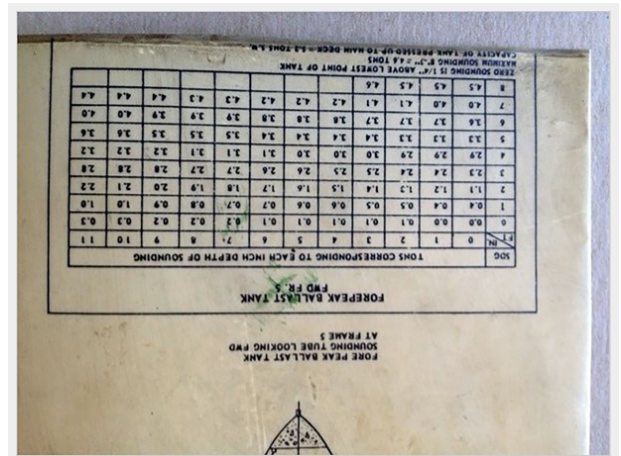
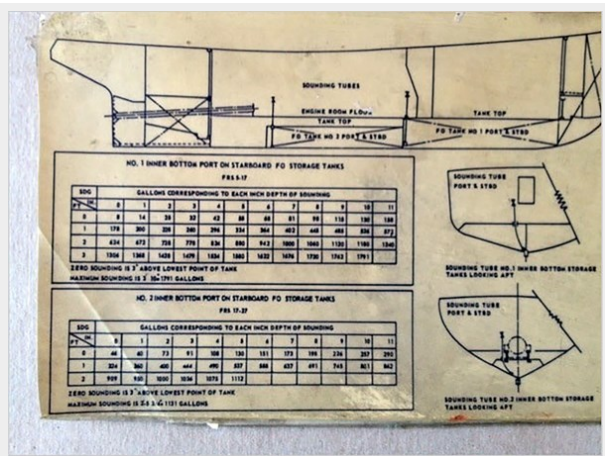
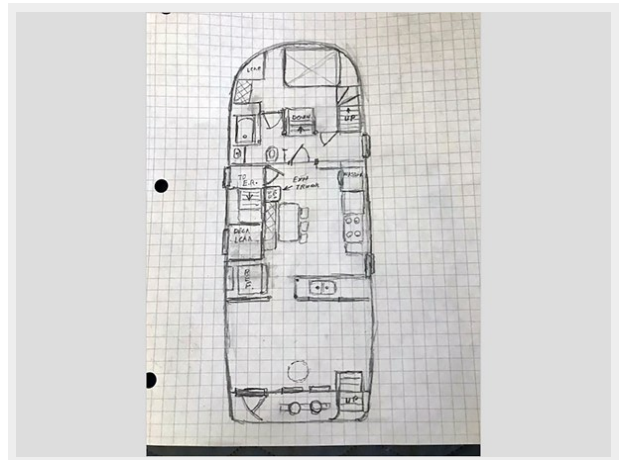
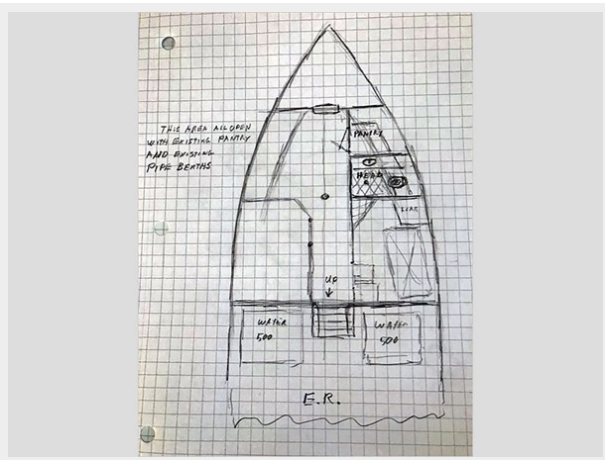
Get specific about fuel
The L6140 is easy to service. All service points are on one side within easy reach. The in-line design allows room to move around the engine. Individual heads, replaceable wet-cylinder liners, fuel heaters and belts, and clean design simplify service. Since the engine only has six cylinders, instead of eight or ten, it has fewer parts to wear out and replace. All this means less time and money spent on repairs.

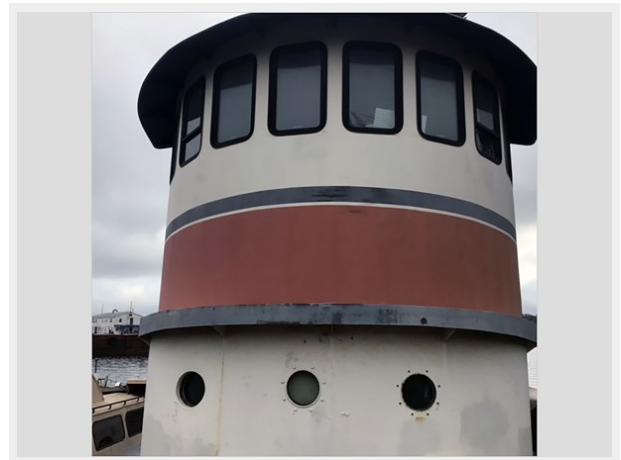
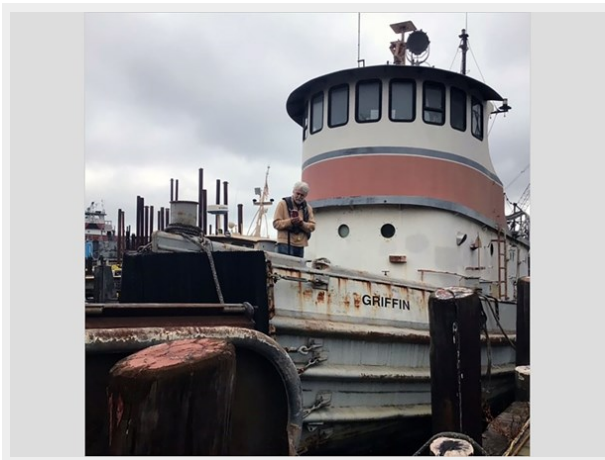
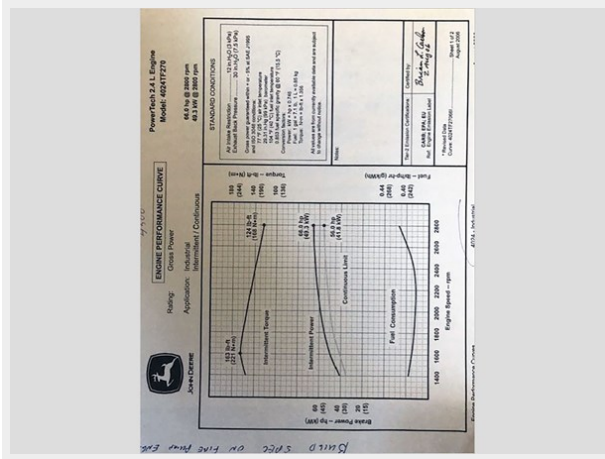
Electric clutch PTO for power out both ends
You can take up to 1000 lbs. of power off the front of the L6140 with an electric clutch PTO (power take off). There is also a 20 hp hydraulic pump mount and another accessory drive. Use them to run hydraulics, power steering pumps, alternators, water pumps or other hydraulic auxiliary systems.

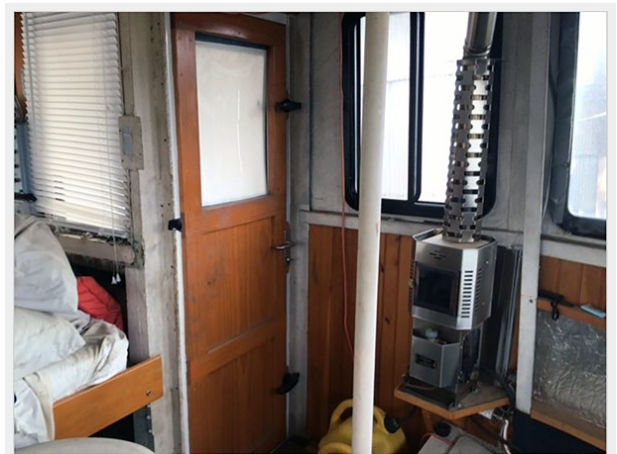
Tested, tested, tested
After the engine is built to your specification, it is dyno tested. Then the unit is installed and it runs again. This is just part of LUGGER's quality control program. When the engine is delivered it is ready to go to work.

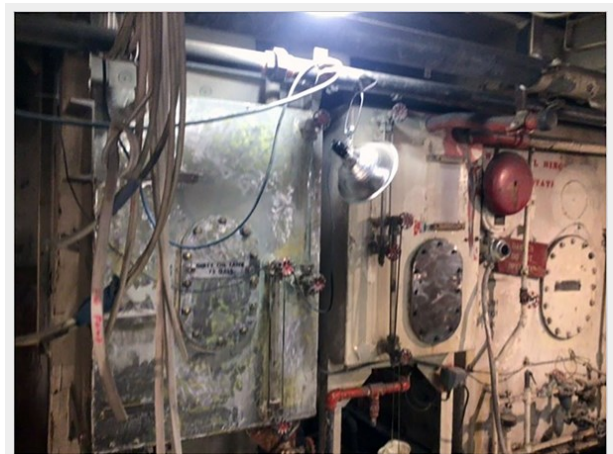
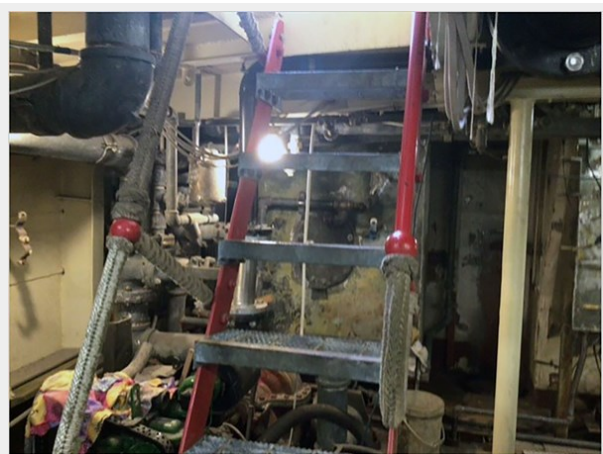
- Jacket water aftercooler increases performance. Thermally controlled to avoid overcooling.
- DC electric reaps and circuit breaker.
- Washable basin air cleaner.

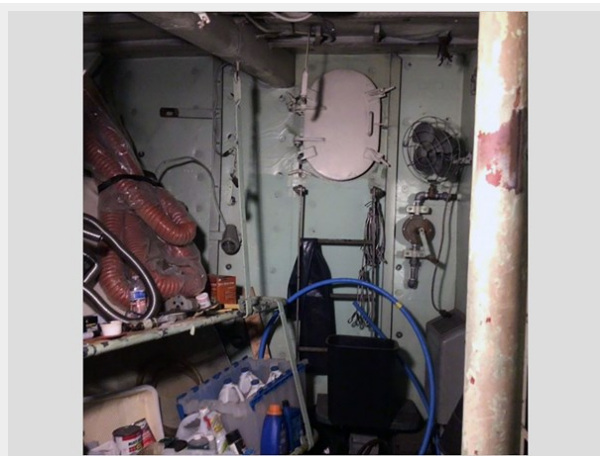
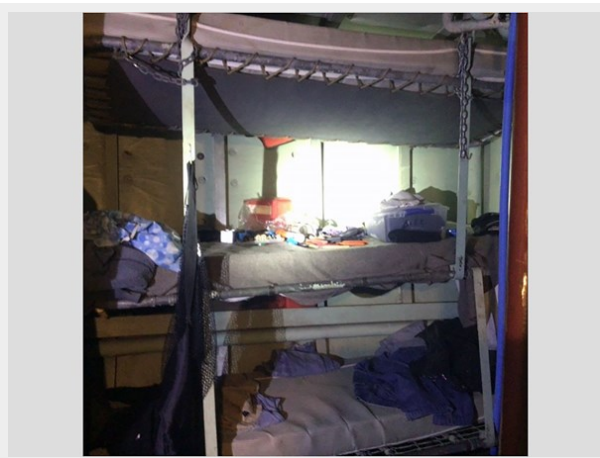


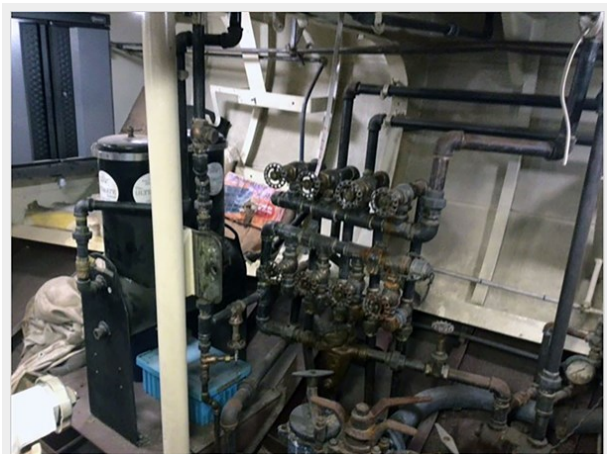
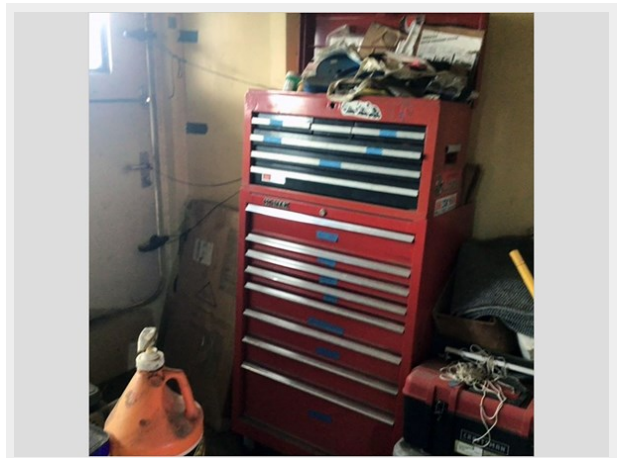
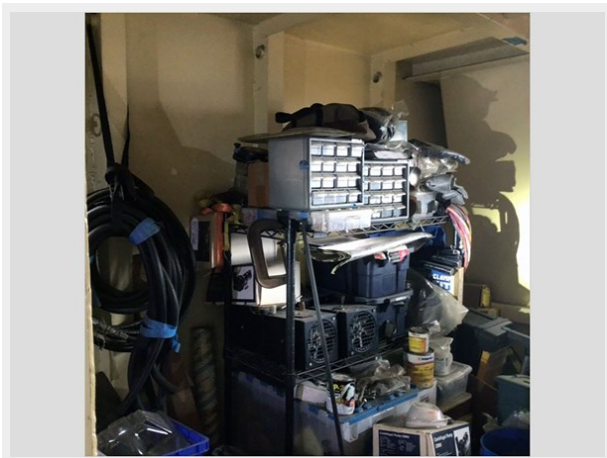
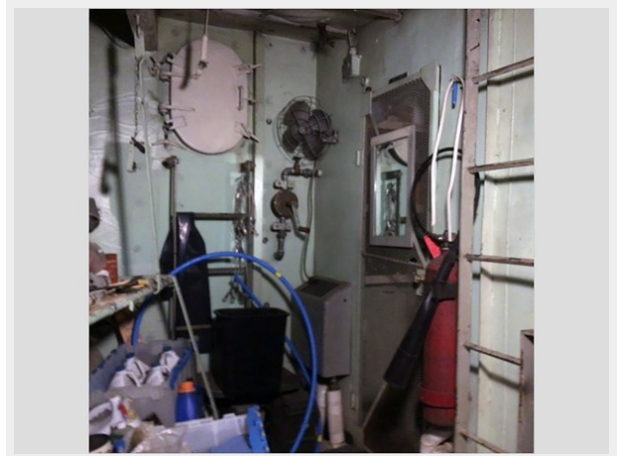
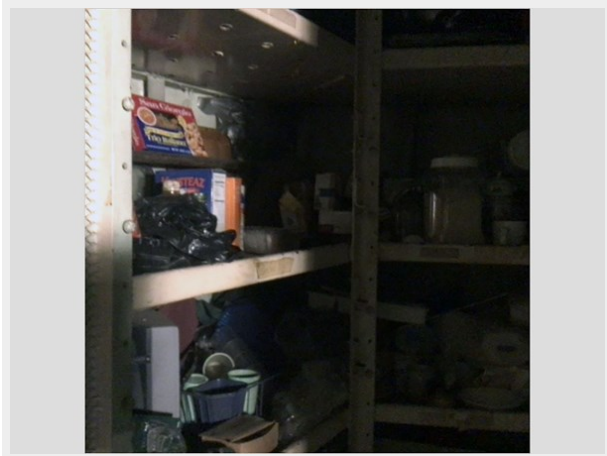


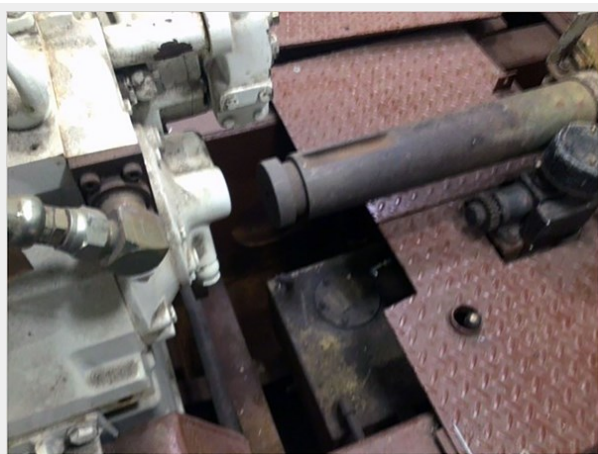
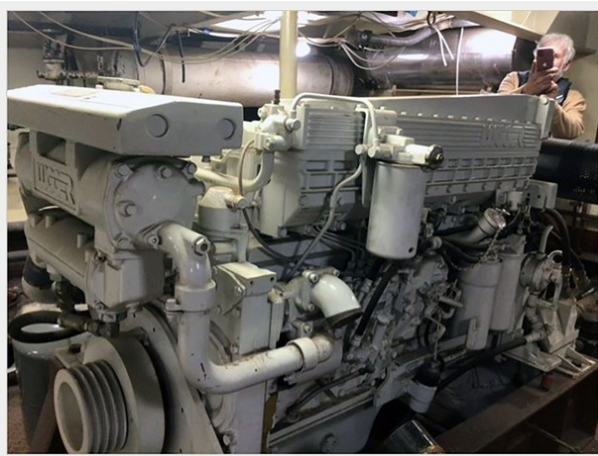
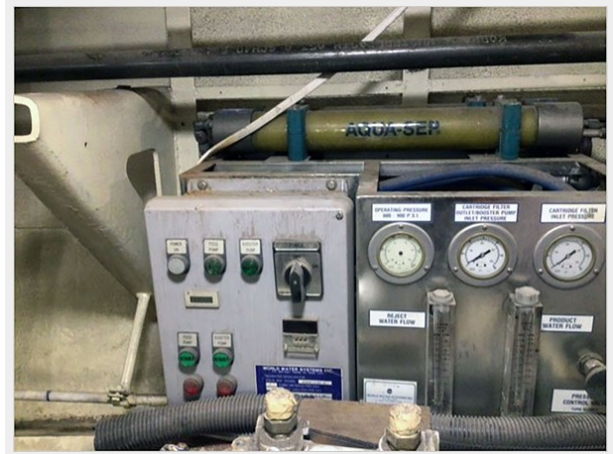
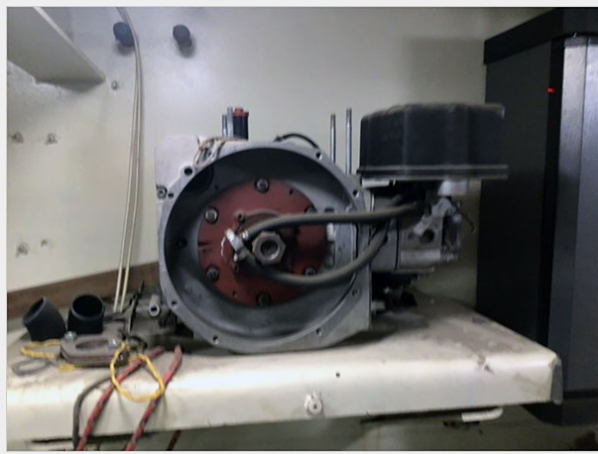


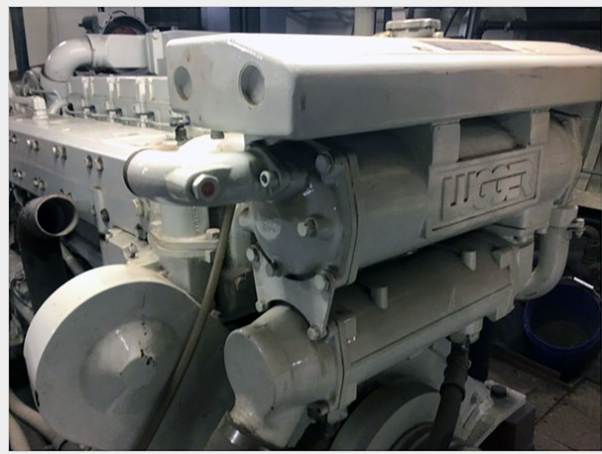












КОНТАКТЫ

Андрей Шестаков (Andrey Shestakov) – ведущий яхтенный брокер отдела продаж яхт и судов компании Shestakov Yacht Sales Inc. Официальный представитель Shestakov Yacht Sales Inc. для русскоговорящих клиентов в центральном офисе компании в Майами/Форт Лодердейл/Флорида/США.

Контактная информация

Email: **andrey@shestakovyachtsales.com**

Web: **shestakovyachtsales.com**

Телефоны

Краснодарский край: **+7(918)465-66-44**

США, Майами, Флорида: **+1(954)274-4435**

Время работы

Понедельник – Суббота: **9:00 - 21:00 EDT**

Воскресенье: **Закрыто**

Адрес



Harbour Towne Marina, 850 NE 3rd St, STE 213, Dania, FL 33004