

FOR-THIS — BERTRAM



Builder: BERTRAM

Year Built: 1973

Model: Sport Fisherman

Price: Price on Application

Location: United States

LOA: 28' (8.53mm)

Beam: 11

Max Draft: 2' 9" (0.81mm)

Our experienced yacht broker, Andrey Shestakov, will help you choose and buy a yacht that best suits your needs **FOR-THIS — BERTRAM** from **our catalogue**. Presently, at **Shestakov Yacht Sales Inc.**, we have a wide variety of yachts available on **our sale's list**. We also work in close contact with all the big **yacht manufacturers** from all over the world.

If you would like to buy a yacht **FOR-THIS — BERTRAM** or would like help answering any questions concerning purchasing, selling or chartering a yacht, please call **+1(954)274-4435**

TABLE OF CONTENTS

TABLE OF CONTENTS	2
SPECIFICATIONS	3
Overview	3
Basic Information	3
Dimensions	3
Speed, Capacities and Weight	4
Accommodations	4
Hull and Deck Information	4
Engine Information	4
PHOTOS	5
CONTACTS	13
Contact details	13
Telephones	13
Office hours	13
Address	13

SPECIFICATIONS

Overview

BID NOW!

The Bertram 28 remains the best-selling Bertram ever. Designed along the lines of the classic Bertram 31, the 28 quickly established her reputation among serious anglers as a rugged and durable offshore fisherman with comfortable cabin accommodations. She rides on a solid fiberglass deep-V hull, and her 11' beam is wide for 28-footer. Below decks, the cabin layout includes berths for four with a convertible dinette, an efficient galley, a stand-up head, and plenty of storage.

A trailer is not included in this sale. Nationwide transportation is available through Certified Marine Transport. Custom Cradles and shipment to port for overseas transport also supplied. Call Robert or Brian at (508) 478-0200 for logistics and quotes. Trailers are available through our Mendon, MA office.

All products be they owned or brokered by Certified Sales, Inc., CS Auto & RV, or its associates, are sold AS-IS, WHERE-IS, NO WARRANTY OR GUARANTEE EXPRESSED OR IMPLIED. NO WARRANTIES OF MERCHANTABILITY AND FITNESS WHAT-SO-EVER. No verbal agreements can be applied to the sale of this product. Certified Sales, Inc. has 45 years of experience selling Repossession, Insurance Salvage, Donation and Brokerage Yachts, Boats, Marina Equipment, RV's, Cars, Trailers, and Motorcycles.

Basic Information

Category: Sport Fisherman

Model Year: 1973

Year Built: 1973

Country: United States

Dimensions

LOA: 28' (8.53mm)

Beam: 11

Max Draft: 2' 9" (0.81mm)

Speed, Capacities and Weight

Water Capacity: 54 Gallons

Holding Tank: 40 Gal Gallons

Fuel Capacity: 425 Gal Gallons

Accommodations

Sleeps: 4

Total Heads: 1

Hull and Deck Information

Hull Material: Fiberglass

Engine Information

Engines: 2

Manufacturer: Crusader

Engine Type: Inboard

Fuel Type: Gas

PHOTOS

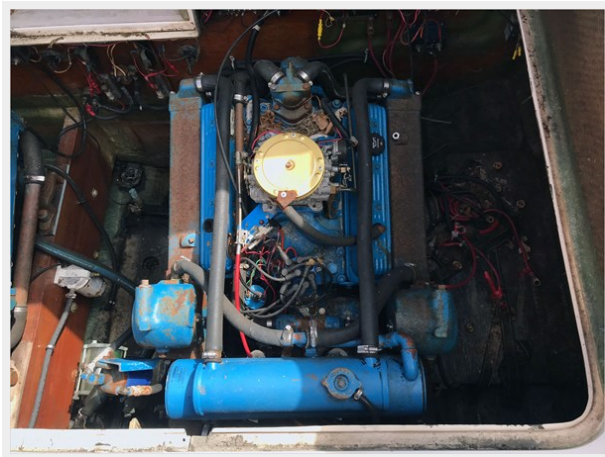
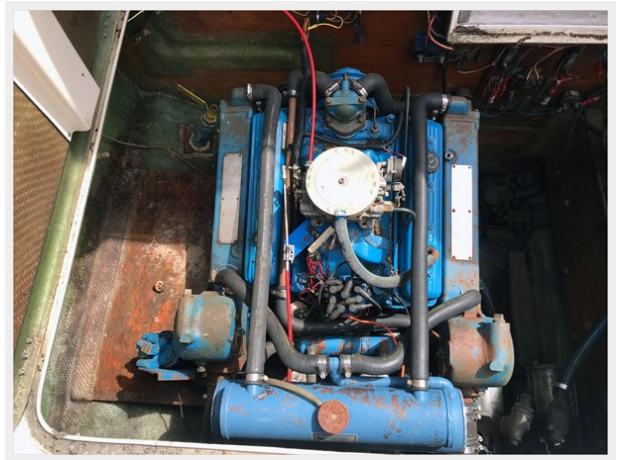
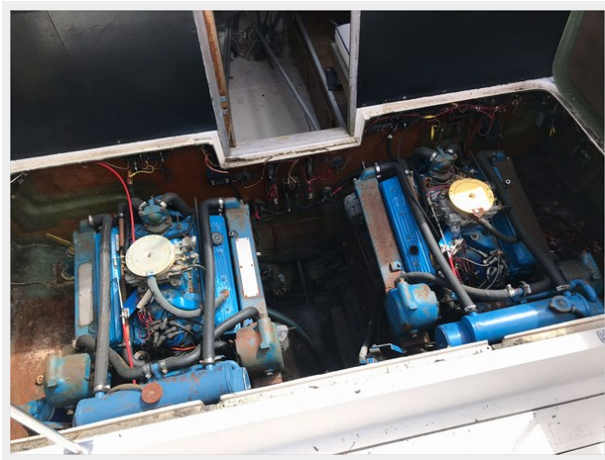


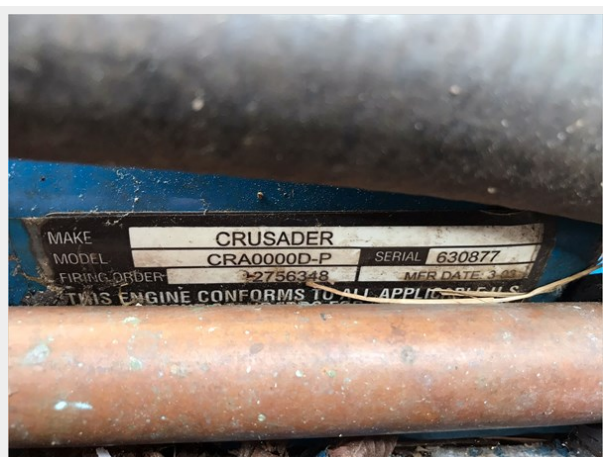
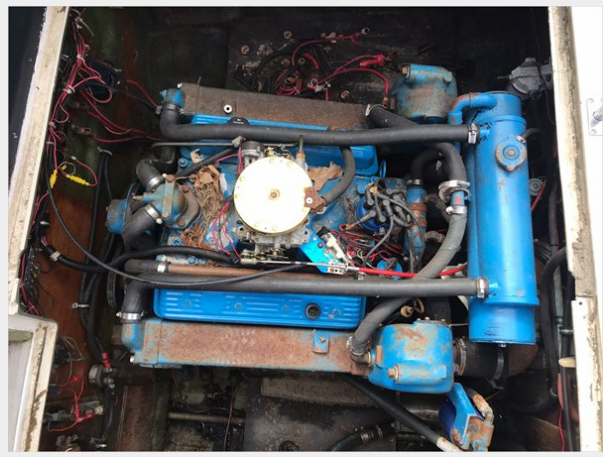














CONTACTS

Andrey Shestakov, leading yacht broker of the sales department of Shestakov Yacht Sales Inc. Shestakov Yacht Sales Inc., the official representative of the Miami/Fort Lauderdale FL headquarters.

Contact details

Email: **andrey@shestakovyachtsales.com**

Web: shestakovyachtsales.com/en/

Telephones

USA: **+1(954)274-4435**

Office hours

Monday – Saturday: **9:00 - 21:00** EDT

Sunday: **closed**

Address



Harbour Towne Marina, 850 NE 3rd St, STE 213, Dania, FL 33004