

QUINTESSA — DESTINY



Builder: DESTINY

Year Built: 2000

Model: Raised Pilothouse

Price: \$1,595,000 USD

Location: United States

LOA: 94' (28.65m)

Beam: 23

Max Draft: 6' (1.83m)

Cruise Speed: 21 Knots Kts. (24 MPH)

Max Speed: 23 Knots Kts. (26 MPH)

Our experienced yacht broker, Andrey Shestakov, will help you choose and buy a yacht that best suits your needs **QUINTESSA — DESTINY** from **our catalogue**. Presently, at **Shestakov Yacht Sales Inc.**, we have a wide variety of yachts available on **our sale's list**. We also work in close contact with all the big **yacht manufacturers** from all over the world.

If you would like to buy a yacht **QUINTESSA — DESTINY** or would like help answering any questions concerning purchasing, selling or chartering a yacht, please call **+1(954)274-4435**

TABLE OF CONTENTS

TABLE OF CONTENTS	2
SPECIFICATIONS	3
Overview	3
Basic Information	3
Dimensions	3
Speed, Capacities and Weight	3
Accommodations	4
Hull and Deck Information	4
Engine Information	4
PHOTOS	5
CONTACTS	11
Contact details	11
Telephones	11
Office hours	11
Address	11

SPECIFICATIONS

Overview

Desirable (4) Stateroom layout with On-Deck Master, King VIP below along with a Queen and Twin plus crew. Refit in '19 with new interior, upholstered furnishings, carpet, window treatments, lighting, soft goods.

Spacious flybridge w/ Jacuzzi, bar, grill & waverunner. Powered by MTU/DDC 16V-2000's, Northern Light gens, Atlas shore power system, stabilizers, bow thruster, etc. Perfect layout for private and/or charter usage!

Basic Information

Category: Raised Pilothouse

Sub Category: Raised Pilothouse

Model Year: 2000

Year Built: 2000

Refit Type: Complete new interior, A/V, **Country:** United States
upgraded electronics, etc.

Dimensions

LOA: 94' (28.65mm)

LWL: 94' (28.65mm)

LOD: 94' (28.65mm)

Beam: 23

Max Draft: 6' (1.83mm)

Speed, Capacities and Weight

Cruise Speed: 21 Knots Kts. (24 MPH) **Cruise Speed Range:** 650

Max Speed: 23 Knots Kts. (26 MPH) **Max Speed Range:** 1350 Kts.

Gross Tonnage: 167 Pounds

Water Capacity: 980 Gallons

Fuel Capacity: 4600 Gal Gallons

Accommodations

Total Cabins: 4

Sleeps: 8

Total Heads: 5

Crew Cabin: 4

Hull and Deck Information

Hull Material: Fiberglass

Exterior Designer: Evan Marshall /
Destiny Yachts

Interior Designer: Evan Marshall

Engine Information

Engines: 2

Manufacturer: MTU

Fuel Type: Diesel

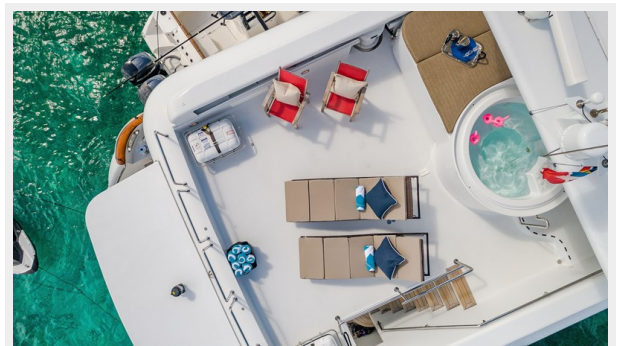
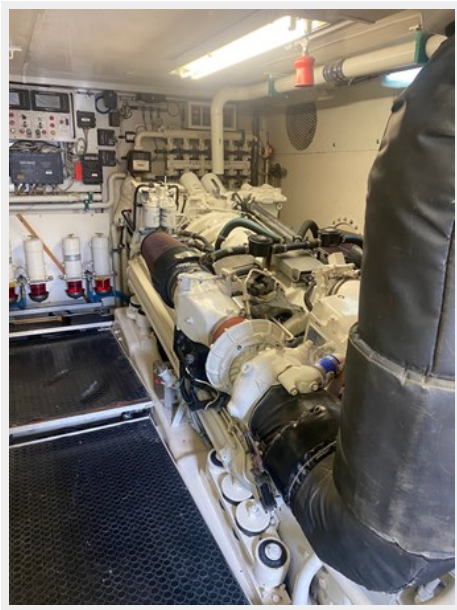
PHOTOS













CONTACTS

Andrey Shestakov, leading yacht broker of the sales department of Shestakov Yacht Sales Inc. Shestakov Yacht Sales Inc., the official representative of the Miami/Fort Lauderdale FL headquarters.

Contact details

Email: **andrey@shestakovyachtsales.com**

Web: shestakovyachtsales.com/en/

Telephones

USA: **+1(954)274-4435**

Office hours

Monday – Saturday: **9:00 - 21:00** EDT

Sunday: **closed**

Address



Harbour Towne Marina, 850 NE 3rd St, STE 213, Dania, FL 33004