

2021 CUTWATER C-28 — CUTWATER



Builder: CUTWATER

Year Built: 2021

Model: cruiser

Price: \$189,987 USD

Location: United States

LOA: 30' (9.14mm)

Beam: 8.5

Min Draft: 2' 6" (0.76mm)

Max Draft: 2' 6" (0.76mm)

Our experienced yacht broker, Andrey Shestakov, will help you choose and buy a yacht that best suits your needs **2021 Cutwater C-28 — CUTWATER** from **our catalogue**. Presently, at **Shestakov Yacht Sales Inc.**, we have a wide variety of yachts available on **our sale's list**. We also work in close contact with all the big **yacht manufacturers** from all over the world.

If you would like to buy a yacht **2021 Cutwater C-28 — CUTWATER** or would like help answering any questions concerning purchasing, selling or chartering a yacht, please call **+1(954)274-4435**

TABLE OF CONTENTS

TABLE OF CONTENTS	2
SPECIFICATIONS	4
Overview	4
Basic Information	4
Dimensions	4
Speed, Capacities and Weight	4
Hull and Deck Information	4
Engine Information	5
PHOTOS	6
IMG_8611	6
IMG_8612	6
IMG_8598	6
IMG_8592	6
IMG_8593	6
IMG_8594	6
IMG_8595	7
IMG_8597	7
IMG_8601	7
IMG_8602	7
IMG_8603	8
IMG_8605	8
IMG_8606	8
IMG_8599	8
IMG_8600	8
IMG_8607	9
IMG_8608	9
IMG_8609	9
CONTACTS	10

Contact details	10
Telephones	10
Office hours	10
Address	10

SPECIFICATIONS

Overview

Introducing the impeccably maintained 2021 Cutwater C-28, currently offered for sale by the Pocket Yacht Company. This vessel represents a perfect blend of modern design, efficiency, and luxury, making it an ideal choice for both seasoned mariners and those new to the boating world.

Basic Information

Category: cruiser

Sub Category: Downeast

Model Year: 2021

Year Built: 2021

Country: United States

Dimensions

LOA: 30' (9.14mm)

Beam: 8.5

Min Draft: 2' 6" (0.76mm)

Max Draft: 2' 6" (0.76mm)

Speed, Capacities and Weight

Water Capacity: 50 Gallons

Holding Tank: 30 Gal Gallons

Fuel Capacity: 145 Gal Gallons

Hull and Deck Information

Hull Material: Fiberglass

Deck Material: Fiberglass

Hull Configuration: Deep Vee

Hull Color: Ranger Dark Grey

Engine Information

Engines: 1

Manufacturer: Volvo Penta

Engine Type: Inboard

Fuel Type: Diesel

PHOTOS

IMG_8611



IMG_8612



IMG_8598



IMG_8592



IMG_8593



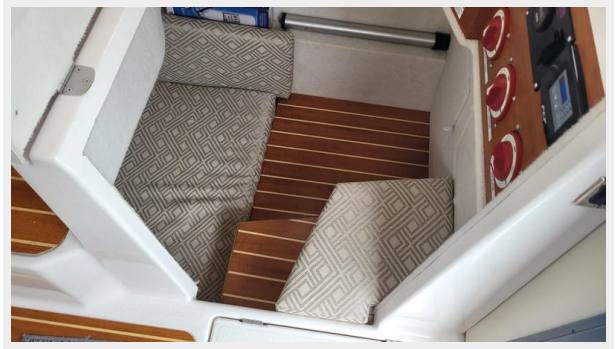
IMG_8594



IMG_8595



IMG_8597



IMG_8601



IMG_8602



IMG_8603



IMG_8605



IMG_8606



IMG_8599



IMG_8600



IMG_8607



IMG_8608



IMG_8609



CONTACTS

Andrey Shestakov, leading yacht broker of the sales department of Shestakov Yacht Sales Inc. Shestakov Yacht Sales Inc., the official representative of the Miami/Fort Lauderdale FL headquarters.

Contact details

Email: **andrey@shestakovyachtsales.com**

Web: shestakovyachtsales.com/en/

Telephones

USA: **+1(954)274-4435**

Office hours

Monday – Saturday: **9:00 - 21:00** EDT

Sunday: **closed**

Address



Harbour Towne Marina, 850 NE 3rd St, STE 213, Dania, FL 33004