

## EROS — CUSTOM LINE



**Builder:** CUSTOM LINE

**Year Built:** 2019

**Model:** Tri-Deck

**Price:** \$13,795,000 USD

**Location:** United States

**LOA:** 121' 6" (37.03mm)

**Beam:** 26.25

**Min Draft:** 7' 3" (2.19mm)

**Max Draft:** 7' 6" (2.26mm)

**Cruise Speed:** 13.5 Knots Kts. (16 MPH)

**Max Speed:** 15.5 Knots Kts. (18 MPH)

Our experienced yacht broker, Andrey Shestakov, will help you choose and buy a yacht that best suits your needs **EROS — CUSTOM LINE** from **our catalogue**. Presently, at **Shestakov Yacht Sales Inc.**, we have a wide variety of yachts available on **our sale's list**. We also work in close contact with all the big **yacht manufacturers** from all over the world.

If you would like to buy a yacht **EROS — CUSTOM LINE** or would like help answering any questions concerning purchasing, selling or chartering a yacht, please call **+1(954)274-4435**

# TABLE OF CONTENTS

TABLE OF CONTENTS	2
SPECIFICATIONS	4
Overview	4
Basic Information	4
Dimensions	4
Speed, Capacities and Weight	5
Accommodations	5
Hull and Deck Information	5
Engine Information	5
PHOTOS	6
Profile running	6
aerial photo	6
aerial photo2	6
aerial photo3jpg	6
toys	7
at anchor beach club	7
beach club platform	7
lifestyle3	7
at anchor night	7
bow	7
Forward deck seating	8
Forward deck seating2	8
Forward deck seating3	8
sun deck jacuzzi	8
sun deck	8
sun deck2	8
upper deck dining 2	9
upper deck dining	9

upper deck seating	9
upper deck salon	9
upper deck AV	9
upper deck salon2	9
master haulway	10
salon3	10
salon	10
master bed	10
master desk	10
master vanity	10
master bath	11
aft deck	11
aft deck2	11
lower deck foyer	11
guest cabin 2	11
bathroom guest	11
guest cabin queen	12
bathroom guest2	12
twin convertible beds guest cabin	12
guest cabin twin	12
pilothouse	12
CONTACTS	13
Contact details	13
Telephones	13
Office hours	13
Address	13

# SPECIFICATIONS

---

## Overview

---

Experience the comfort and performance aboard the Custom Line 37 Navetta.

Built to RINA regulations with special comfort class approval, this tri-deck yacht offers zero-speed and underway stabilizers, ample storage for tenders and water toys, and superb entertainment areas.

Featuring 5 spacious cabins the 2019 Custom Line 37 Navetta offers exceptional layout and design for unforgettable yachting experiences. Whether seeking exhilarating adventures or serene relaxation, this Motoryacht is equipped to satisfy the most demanding buyer that seeks for a well designed and laid out vessel that combines long range cruising, with the safety and stability of a full displacement hull and the amenities of a much larger yacht.

Don't miss this Must-See opportunity - contact us today to schedule a viewing!

## Basic Information

---

**Category:** Tri-Deck

**Sub Category:** Tri-Deck

**Model Year:** 2019

**Year Built:** 2019

**Refit Type:** 5 year Class and upgrades

**Country:** United States

## Dimensions

---

**LOA:** 121' 6" (37.03mm)

**LWL:** 100' 4" (30.58mm)

**Beam:** 26.25

**Min Draft:** 7' 3" (2.19mm)

**Max Draft:** 7' 6" (2.26mm)

## Speed, Capacities and Weight

---

**Cruise Speed:** 13.5 Knots Kts. (16 MPH)

**Cruise Speed Range:** 1250

**Max Speed:** 15.5 Knots Kts. (18 MPH)

**Gross Tonnage:** 289 Pounds

**Water Capacity:** 1056 Gallons

**Holding Tank:** 400 Gal Gallons

**Fuel Capacity:** 8586 Gal Gallons

**Fuel Consumption:** 92 Gal Gallons

## Accommodations

---

**Total Cabins:** 5

**Total Berths:** 10

**Sleeps:** 10

**Total Heads:** 7

**Crew Cabin:** 7

**Crew Berths:** 4

**Crew Heads:** 4

## Hull and Deck Information

---

**Hull Material:** FRP

**Deck Material:** Teak

**Hull Configuration:** Full Displacement

**Hull Color:** White

**Exterior Designer:** Studio Zuccon International Project

**Interior Designer:** Studio Zuccon International Project

## Engine Information

---

**Engines:** 2

**Manufacturer:** MAN

**Engine Type:** Inboard

**Fuel Type:** Diesel

# PHOTOS

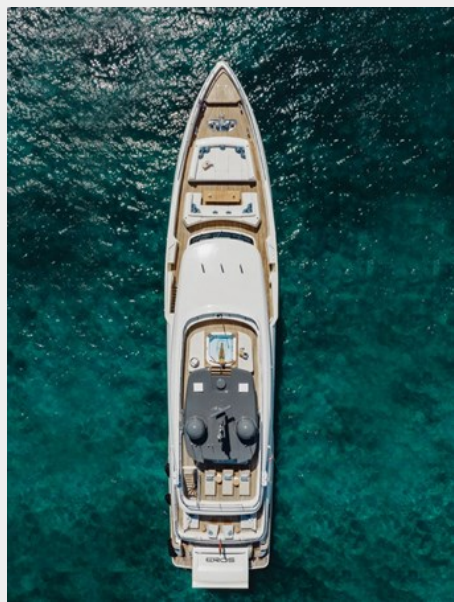
**Profile running**



**aerial photo**



**aerial photo2**



**aerial photo3jpg**



**toys**



**at anchor beach club**



**beach club platform**



**lifestyle3**



**at anchor night**



**bow**



**Forward deck seating**



**Forward deck seating2**



**Forward deck seating3**



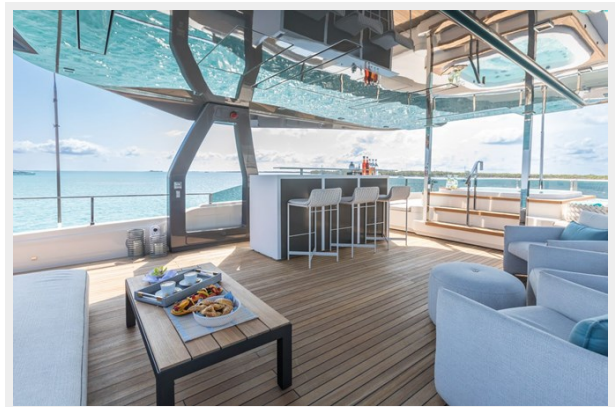
**sun deck jacuzzi**



**sun deck**



**sun deck2**





**upper deck dining 2**



**upper deck dining**



**upper deck seating**



**upper deck salon**



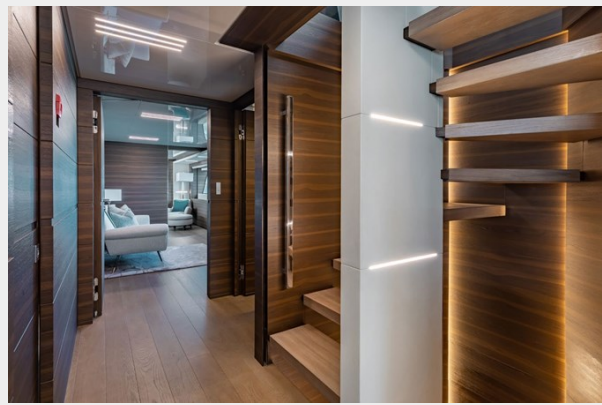
**upper deck AV**



**upper deck salon2**



**master haulway**



**salon3**



**salon**



**master bed**



**master desk**



**master vanity**



**master bath**



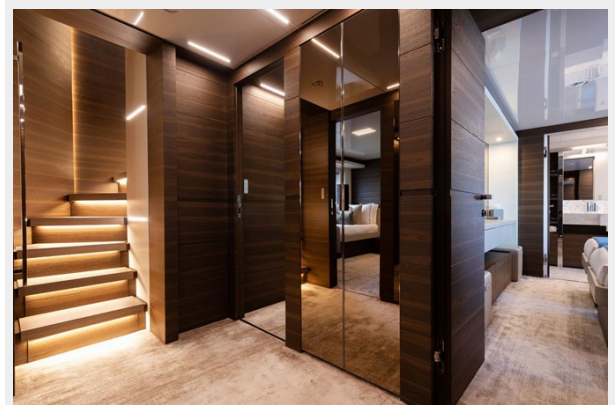
**aft deck**



**aft deck2**



**lower deck foyer**



**guest cabin 2**



**bathroom guest**



**guest cabin queen**



**bathroom guest2**



**twin convertible beds guest cabin**



**guest cabin twin**



**pilothouse**



# CONTACTS

---

Andrey Shestakov, leading yacht broker of the sales department of Shestakov Yacht Sales Inc. Shestakov Yacht Sales Inc., the official representative of the Miami/Fort Lauderdale FL headquarters.

## Contact details

---

Email: **andrey@shestakovyachtsales.com**

Web: [shestakovyachtsales.com/en/](http://shestakovyachtsales.com/en/)

## Telephones

---

USA: **+1(954)274-4435**

## Office hours

---

Monday – Saturday: **9:00 - 21:00** EDT

Sunday: **closed**

## Address

---



Harbour Towne Marina, 850 NE 3rd St, STE 213, Dania, FL 33004