

# COLUMBUS ATLANTIQUE 37 — COLUMBUS YACHTS



**Builder:** COLUMBUS YACHTS

**Year Built:** 2026

**Model:** Motor Yacht

**Price:** €18,500,000 EUR

**Location:** Italy

**LOA:** 121' 5" (37mm)

**Beam:** 26.24

**Max Draft:** 7' 7" (2.3mm)

**Cruise Speed:** 19 Knots Kts. (22 MPH)

**Max Speed:** 22 Knots Kts. (25 MPH)

Our experienced yacht broker, Andrey Shestakov, will help you choose and buy a yacht that best suits your needs **COLUMBUS ATLANTIQUE 37 — COLUMBUS YACHTS** from our catalogue. Presently, at **Shestakov Yacht Sales Inc.**, we have a wide variety of yachts available on our sale's list. We also work in close contact with all the big **yacht manufacturers** from all over the world.

If you would like to buy a yacht **COLUMBUS ATLANTIQUE 37 — COLUMBUS YACHTS** or would like help answering any questions concerning purchasing, selling or chartering a yacht, please call **+1(954)274-4435**

# TABLE OF CONTENTS

TABLE OF CONTENTS	2
SPECIFICATIONS	4
Overview	4
Basic Information	4
Dimensions	5
Speed, Capacities and Weight	5
Accommodations	5
Hull and Deck Information	5
Engine Information	5
PHOTOS	6
HL_PLB_005_37m_001_SM_0001	6
HL_PLB_005_37m_002_SM_Terrazzini_0014	6
HL_PLB_005_37m_001_SM_0000	6
HL_PLB_005_37m_002_SM_Terrazzini_0016	6
HL_PLB_005_37m_001_SM_0004	6
HL_PLB_005_37m_002_SM_Terrazzini_0015	6
HL_PLB_005_37m_001_SM_0011	7
COLUMBUS ATLANTIQUE 37	7
HL_PLB_005_37m_002_SM_Terrazzini_0013	7
HL_PLB_005_37m_001_SM_0002	7
COLUMBUS ATLANTIQUE 37	7
COLUMBUS ATLANTIQUE 37	7
COLUMBUS ATLANTIQUE 37	8
COLUMBUS ATLANTIQUE 37	8
COLUMBUS ATLANTIQUE 37	8
COLUMBUS ATLANTIQUE 37	8
COLUMBUS ATLANTIQUE 37	8
COLUMBUS ATLANTIQUE 37	9
_RC26774	9

---

_RC26812-Avec accentuation-Bruit	9
_RC26878-Avec accentuation-Bruit	9
_RC26901-Avec accentuation-Bruit	10
_RC26879-Avec accentuation-Bruit	10
_RC26935-Avec accentuation-Bruit-5_modificata	10
_RC26913-Avec accentuation-Bruit	10
_RC26959-Avec accentuation-Bruit	10
_RC27616-Avec accentuation-Bruit	10
_RC27690-Avec accentuation-Bruit	11
_RC27823-Avec accentuation-Bruit	11
_RC27853-Avec accentuation-Bruit	11
_RC27879 copie	11
DJI_0538-Avec accentuation-Bruit	11
DJI_0550-Avec accentuation-Bruit	11
CONTACTS	12
Contact details	12
Telephones	12
Office hours	12
Address	12

---

---

# SPECIFICATIONS

---

## Overview

---

NEW BUILD - ON SPEC

The design is a combination of stylistic, planning and functional elements dedicated to traveling by sea, fully enjoying every single moment spent on board. Great interaction of the spaces with the marine environment, the external lines are clean and elegant, with a touch of sportiness like in Italian grand touring cars appreciated all over the world.

The silhouette of the hull of the entire line recalls the sailing yachts of other times, and the stern area with its panoramic swimming pool is located just 50 cm above the sea.

Columbus Atlantique 37 is compact (299 GT) and has a sporty line with refined interiors. The layout includes 4 double cabins with private bathrooms located below deck, while the owner's stateroom is located forward of the main deck and is equipped with a bathroom with separate tub and shower as well as a walk-in closet. There are two dining areas, one on the external main deck and the other on the upper deck which can accommodate up to 10 people. The peculiarity of the latter is the large rounded windows, with up/down and lateral movement, which can be closed or opened when necessary to facilitate the constant connection with the sea. The first garage for the 4.45 metre tender is located on the starboard side, while a second 3.25 metre tender and the rescue boat are housed in the bow hangar. Columbus Atlantique 37 has a semi-planing hull and thanks to its two 2000hp MAN engines is capable of reaching a maximum speed of 22 knots and a cruising speed of 19 knots.

The external lines and the interior design are by Hot Lab while the naval engineering is by Palumbo Superyachts.

---

## Basic Information

---

**Category:** Motor Yacht

**Model Year:** 2026

**Year Built:** 2026

**Country:** Italy

---

## Dimensions

---

**LOA:** 121' 5" (37mm)**LWL:** 120' 1" (36.6mm)**Beam:** 26.24**Max Draft:** 7' 7" (2.3mm)

---

## Speed, Capacities and Weight

---

**Cruise Speed:** 19 Knots Kts. (22 MPH) **Max Speed:** 22 Knots Kts. (25 MPH)**Gross Tonnage:** 299 Pounds**Water Capacity:** 7500 Gallons**Holding Tank:** 792.52 Gal Gallons**Fuel Capacity:** 8717.68 Gal Gallons

---

## Accommodations

---

**Total Cabins:** 5**Sleeps:** 10**Total Heads:** 6**Crew Berths:** 7

---

## Hull and Deck Information

---

**Hull Material:** Aluminum**Hull Designer:** PALUMBO  
SUPERYACHTS**Exterior Designer:** HOT LAB**Interior Designer:** HOT LAB

---

## Engine Information

---

**Engines:** 2**Manufacturer:** MAN**Engine Type:** Inboard**Fuel Type:** Diesel



# PHOTOS

HL\_PLB\_005\_37m\_001\_SM\_0001



HL\_PLB\_005\_37m\_002\_SM\_Terrazzini\_0014



HL\_PLB\_005\_37m\_001\_SM\_0000



HL\_PLB\_005\_37m\_002\_SM\_Terrazzini\_0016



HL\_PLB\_005\_37m\_001\_SM\_0004



HL\_PLB\_005\_37m\_002\_SM\_Terrazzini\_0015





HL\_PLB\_005\_37m\_001\_SM\_0011



COLUMBUS ATLANTIQUE 37



HL\_PLB\_005\_37m\_002\_SM\_Terrazzini\_0013



HL\_PLB\_005\_37m\_001\_SM\_0002



COLUMBUS ATLANTIQUE 37



COLUMBUS ATLANTIQUE 37





**COLUMBUS ATLANTIQUE 37**



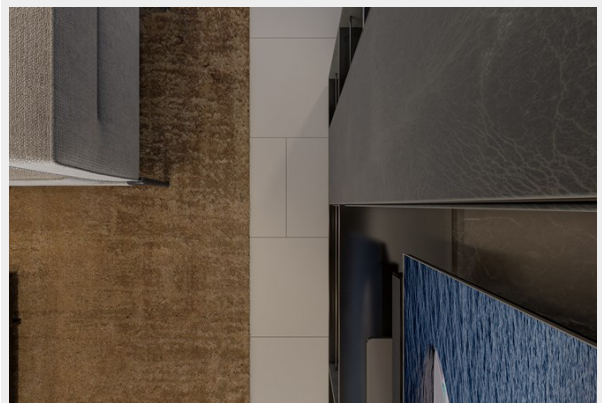
**COLUMBUS ATLANTIQUE 37**



**COLUMBUS ATLANTIQUE 37**



**COLUMBUS ATLANTIQUE 37**

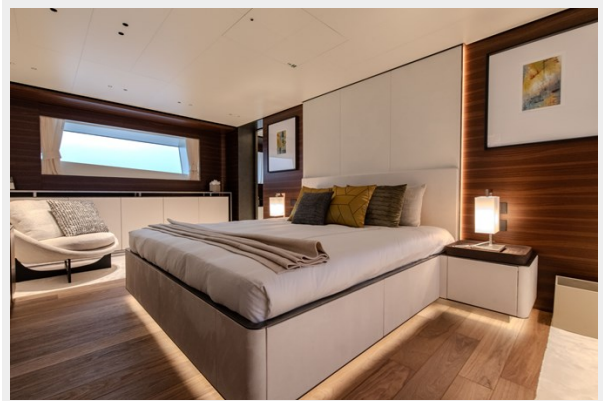




### COLUMBUS ATLANTIQUE 37



### \_RC26774



### \_RC26812-Avec accentuation-Bruit



### \_RC26878-Avec accentuation-Bruit



**\_RC26879-Avec accentuation-Bruit**



**\_RC26901-Avec accentuation-Bruit**



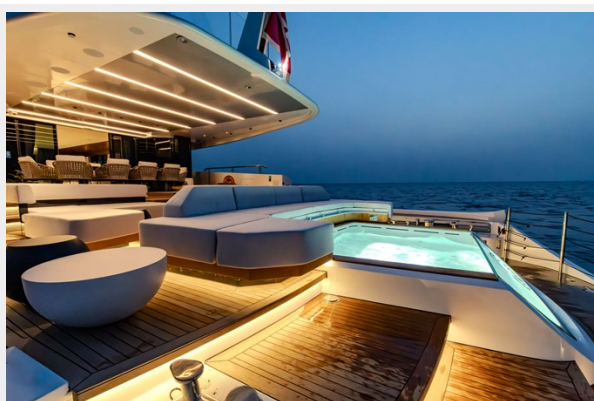
**\_RC26913-Avec accentuation-Bruit**



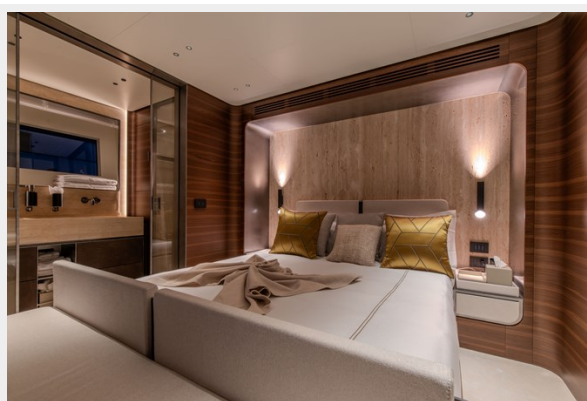
**\_RC26935-Avec accentuation-Bruit-  
5\_modificata**



**\_RC26959-Avec accentuation-Bruit**



**\_RC27616-Avec accentuation-Bruit**





**\_RC27690-Avec accentuation-Bruit**



**\_RC27823-Avec accentuation-Bruit**



**\_RC27853-Avec accentuation-Bruit**



**\_RC27879 copie**



**DJI\_0538-Avec accentuation-Bruit**



**DJI\_0550-Avec accentuation-Bruit**





# CONTACTS

---

Andrey Shestakov, leading yacht broker of the sales department of Shestakov Yacht Sales Inc. Shestakov Yacht Sales Inc., the official representative of the Miami/Fort Lauderdale FL headquarters.

## Contact details

---

Email: **andrey@shestakovyachtsales.com**

Web: [shestakovyachtsales.com/en/](http://shestakovyachtsales.com/en/)

## Telephones

---

USA: **+1(954)274-4435**

## Office hours

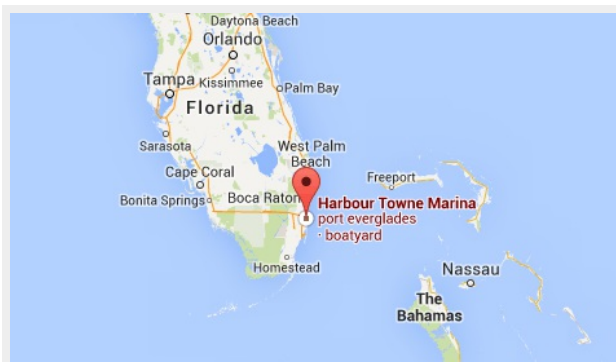
---

Monday - Saturday: **9:00 - 21:00** EDT

Sunday: **closed**

## Address

---



Harbour Towne Marina, 850 NE 3rd St, STE 213, Dania, FL 33004