

## NOTORIUS — GIANETTI



**Builder:** GIANETTI

**Year Built:** 2007

**Model:** cruiser

**Price:** \$749,000 USD

**Location:** United States

**LOA:** 68' (20.73m)

**Beam:** 18.34

**Min Draft:** 5' 3" (1.6m)

**Max Draft:** 5' 9" (1.75m)

**Cruise Speed:** 20 Knots Kts. (23 MPH)

**Max Speed:** 30 Knots Kts. (35 MPH)

Our experienced yacht broker, Andrey Shestakov, will help you choose and buy a yacht that best suits your needs **Notorius — GIANETTI** from our catalogue. Presently, at **Shestakov Yacht Sales Inc.**, we have a wide variety of yachts available on our sale's list. We also work in close contact with all the big **yacht manufacturers** from all over the world.

If you would like to buy a yacht **Notorius — GIANETTI** or would like help answering any questions concerning purchasing, selling or chartering a yacht, please call **+1(954)274-4435**

# TABLE OF CONTENTS

TABLE OF CONTENTS	2
SPECIFICATIONS	5
Overview	5
Basic Information	5
Dimensions	5
Speed, Capacities and Weight	5
Accommodations	5
Hull and Deck Information	5
Engine Information	6
PHOTOS	7
dji_fly_20240601_112026_207_1717256610100_photo	7
dji_fly_20240601_112032_208_1717256609218_photo	7
dji_fly_20240601_112042_209_1717256608272_photo	7
dji_fly_20240601_112048_210_1717256607225_photo	7
dji_fly_20240601_112054_211_1717256606145_photo	7
dji_fly_20240601_112100_212_1717256605059_photo	7
dji_fly_20240601_112110_213_1717256604042_photo	7
dji_fly_20240601_112118_214_1717256603045_photo	7
dji_fly_20240601_112126_215_1717256602194_photo	8
dji_fly_20240601_112132_216_1717256601415_photo	8
dji_fly_20240601_112140_217_1717256600625_photo	8
dji_fly_20240601_112152_218_1717256599803_photo	8
dji_fly_20240601_112204_219_1717256598855_photo	8
dji_fly_20240601_112220_220_1717256597949_photo	8
dji_fly_20240601_112232_221_1717256597028_photo	8
dji_fly_20240601_112252_222_1717256593989_photo	8
dji_fly_20240601_112258_223_1717256592728_photo	9
dji_fly_20240601_112318_224_1717256591563_photo	9

---

dji_fly_20240601_112326_225_1717256590518_photo	9
dji_fly_20240601_112336_226_1717256587738_photo	9
dji_fly_20240601_112344_227_1717256586873_photo	9
dji_fly_20240601_112356_228_1717256585748_photo	9
dji_fly_20240601_112410_229_1717256584925_photo	9
dji_fly_20240601_112418_230_1717256583905_photo	9
dji_fly_20240601_112434_231_1717256582743_photo	10
dji_fly_20240601_112442_232_1717256581707_photo	10
dji_fly_20240601_112658_234_1717256505993_photo	10
dji_fly_20240601_112716_235_1717256505110_photo	10
IMG_5273	10
IMG_5274	10
IMG_5275	10
IMG_5276	10
IMG_5277	11
IMG_5278	11
IMG_5279	11
IMG_5280	11
IMG_5281	11
IMG_5282	11
IMG_5283	11
IMG_5286	11
IMG_5287	12
IMG_5288	12
IMG_5290	12
IMG_5289	12
IMG_5292	12
IMG_5291	12
IMG_5294	13

---

---

IMG_5293	13
IMG_5295	13
IMG_5296	13
IMG_5297	13
IMG_5298	13
IMG_5299	13
IMG_5300	13
IMG_5301	14
IMG_5302	14
IMG_5303	14
IMG_5304	14
IMG_5305	14
IMG_5306	14
IMG_5307	14
CONTACTS	15
Contact details	15
Telephones	15
Office hours	15
Address	15

---

## SPECIFICATIONS

---

### Overview

---

This is a boat lover selling! Bring all offers! Sexy Italian design makes this yacht the perfect for fun in the sun and on the water!

### Basic Information

---

**Category:** cruiser **Model Year:** 2007  
**Year Built:** 2007 **Country:** United States

### Dimensions

---

**LOA:** 68' (20.73mm) **Beam:** 18.34  
**Min Draft:** 5' 3" (1.6mm) **Max Draft:** 5' 9" (1.75mm)

### Speed, Capacities and Weight

---

**Cruise Speed:** 20 Knots Kts. (23 MPH) **Cruise Speed Range:** 300  
**Max Speed:** 30 Knots Kts. (35 MPH) **Max Speed Range:** 260 Kts.  
**Gross Tonnage:** 61 Pounds **Water Capacity:** 320 Gallons  
**Holding Tank:** 75 Gal Gallons **Fuel Capacity:** 1050 Gal Gallons

### Accommodations

---

**Total Cabins:** 4 **Total Berths:** 8  
**Sleeps:** 8 **Total Heads:** 4  
**Crew Cabin:** 2 **Crew Berths:** 2  
**Crew Heads:** 1

### Hull and Deck Information

---

**Hull Material:** Fiberglass **Deck Material:** Teak  
**Hull Configuration:** Semi-Displacement **Hull Designer:** GIANETTI  
**Interior Designer:** GIANETTI

## Engine Information

---

**Engines:** 2

**Manufacturer:** MTU

**Engine Type:** Inboard

**Fuel Type:** Diesel

# PHOTOS

dji\_fly\_20240601\_112026\_207\_1717256610100\_photo dji\_fly\_20240601\_112032\_208\_1717256609218\_photo



dji\_fly\_20240601\_112042\_209\_1717256608272\_photo dji\_fly\_20240601\_112048\_210\_1717256607225\_photo



dji\_fly\_20240601\_112054\_211\_1717256606145\_photo dji\_fly\_20240601\_112100\_212\_1717256605059\_photo



dji\_fly\_20240601\_112110\_213\_1717256604042\_photo dji\_fly\_20240601\_112118\_214\_1717256603045\_photo



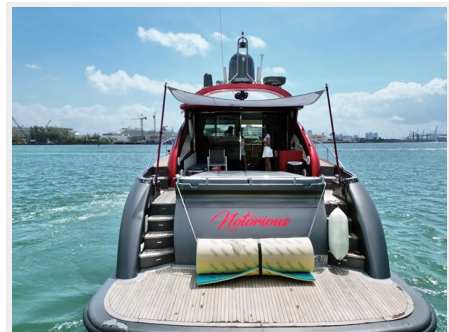
dji\_fly\_20240601\_112126\_215\_1717256602194\_photo dji\_fly\_20240601\_112132\_216\_1717256601415\_photo



dji\_fly\_20240601\_112140\_217\_1717256600625\_photo dji\_fly\_20240601\_112152\_218\_1717256599803\_photo



dji\_fly\_20240601\_112204\_219\_1717256598855\_photo dji\_fly\_20240601\_112220\_220\_1717256597949\_photo



dji\_fly\_20240601\_112232\_221\_1717256597028\_photo dji\_fly\_20240601\_112252\_222\_1717256593989\_photo





dji\_fly\_20240601\_112258\_223\_1717256592728\_photo dji\_fly\_20240601\_112318\_224\_1717256591563\_photo



dji\_fly\_20240601\_112326\_225\_1717256590518\_photo dji\_fly\_20240601\_112336\_226\_1717256587738\_photo



dji\_fly\_20240601\_112344\_227\_1717256586873\_photo dji\_fly\_20240601\_112356\_228\_1717256585748\_photo



dji\_fly\_20240601\_112410\_229\_1717256584925\_photo dji\_fly\_20240601\_112418\_230\_1717256583905\_photo



dji\_fly\_20240601\_112434\_231\_1717256582743\_photo dji\_fly\_20240601\_112442\_232\_1717256581707\_photo



dji\_fly\_20240601\_112658\_234\_1717256505993\_photo dji\_fly\_20240601\_112716\_235\_1717256505110\_photo



IMG\_5273

IMG\_5274



IMG\_5275

IMG\_5276



IMG\_5277



IMG\_5278



IMG\_5279



IMG\_5280



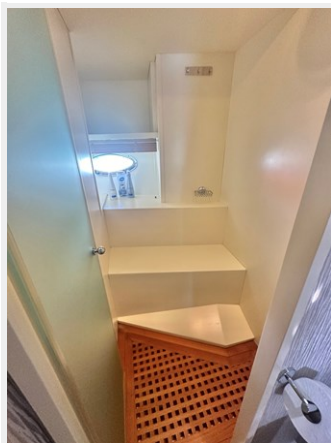
IMG\_5281



IMG\_5282



IMG\_5283



IMG\_5286



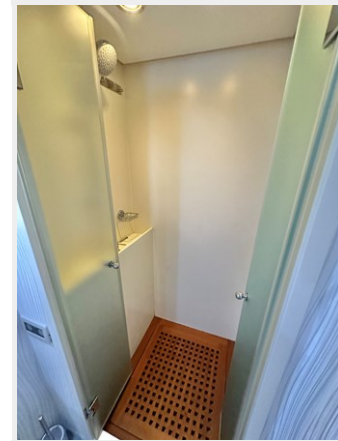
IMG\_5287



IMG\_5288



IMG\_5290



IMG\_5289



IMG\_5292



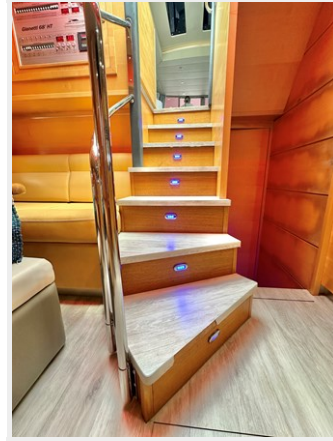
IMG\_5291



IMG\_5293



IMG\_5294



IMG\_5295



IMG\_5296



IMG\_5297



IMG\_5298



IMG\_5299



IMG\_5300



IMG\_5301



IMG\_5302



IMG\_5303



IMG\_5304



IMG\_5305



IMG\_5306



IMG\_5307



## CONTACTS

---

Andrey Shestakov, leading yacht broker of the sales department of Shestakov Yacht Sales Inc. Shestakov Yacht Sales Inc., the official representative of the Miami/Fort Lauderdale FL headquarters.

### Contact details

---

Email:  
**andrey@shestakovyachtsales.com**

Web: [shestakovyachtsales.com/en/](http://shestakovyachtsales.com/en/)

### Telephones

---

USA: **+1(954)274-4435**

### Office hours

---

Monday - Saturday: **9:00 - 21:00** EDT

Sunday: **closed**

### Address

---



Harbour Towne Marina, 850 NE 3rd  
St, STE 213, Dania, FL 33004