

TOPLESS — CABRIOLET



Builder: CABRIOLET

Year Built: 2004

Model: cruiser

Price: \$150,000 USD

Location: United States

LOA: 34' (10.36mm)

Beam: 9.5

Max Draft: 2' (0.61mm)

Our experienced yacht broker, Andrey Shestakov, will help you choose and buy a yacht that best suits your needs **Topless — CABRIOLET** from **our catalogue**. Presently, at **Shestakov Yacht Sales Inc.**, we have a wide variety of yachts available on **our sale's list**. We also work in close contact with all the big **yacht manufacturers** from all over the world.

If you would like to buy a yacht **Topless — CABRIOLET** or would like help answering any questions concerning purchasing, selling or chartering a yacht, please call **+1(954)274-4435**

TABLE OF CONTENTS

TABLE OF CONTENTS	2
SPECIFICATIONS	3
Overview	3
Basic Information	3
Dimensions	3
Hull and Deck Information	3
Engine Information	4
PHOTOS	5
CONTACTS	11
Contact details	11
Telephones	11
Office hours	11
Address	11

SPECIFICATIONS

Overview

General Description

Ride in elegance and comfort in this unique day cruiser/picnic boat. Built has been built with fiberglass construction with teak inlay to give the beautiful wood look. The shallow draft jet pumps allow you to run in just two feet of water and the bow thruster will allow you to dock the boat easily. She is a beautiful and stylish cruiser.

A trailer is included in this sale.

- Type: Triple Axle

Nationwide transportation is available through . Custom Cradles and shipment to port for overseas transport also supplied.

All products be they owned or brokered by Certified Sales, Inc., CS Auto & RV, or its associates, are sold AS-IS, WHERE-IS, NO WARRANTY OR GUARANTEE EXPRESSED OR IMPLIED. NO WARRANTIES OF MERCHANTABILITY AND FITNESS WHAT-SO-EVER. No verbal agreements can be applied to the sale of this product.

Basic Information

Category: cruiser

Model Year: 2004

Year Built: 2004

Country: United States

Dimensions

LOA: 34' (10.36mm)

Beam: 9.5

Max Draft: 2' (0.61mm)

Hull and Deck Information

Hull Material: Fiberglass

Engine Information

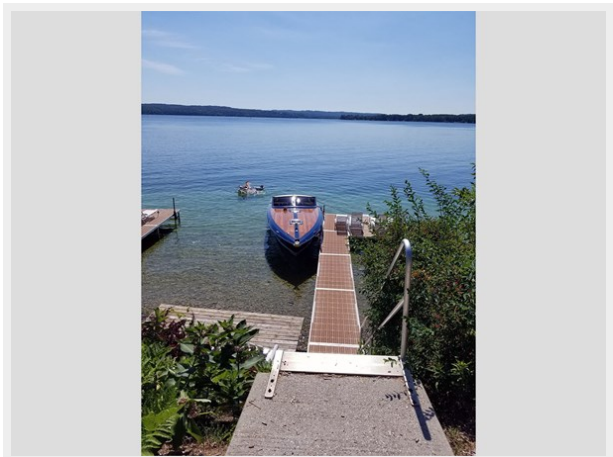
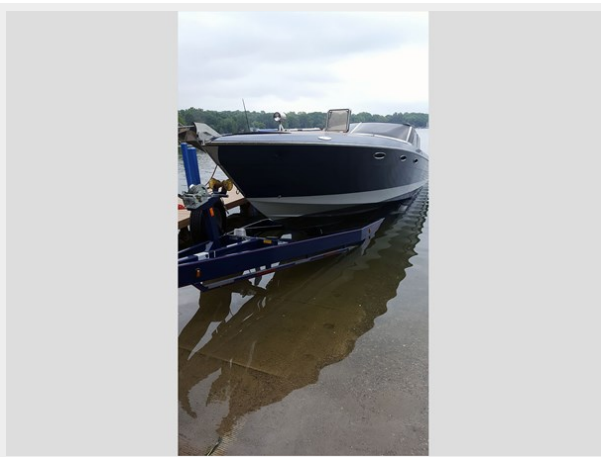
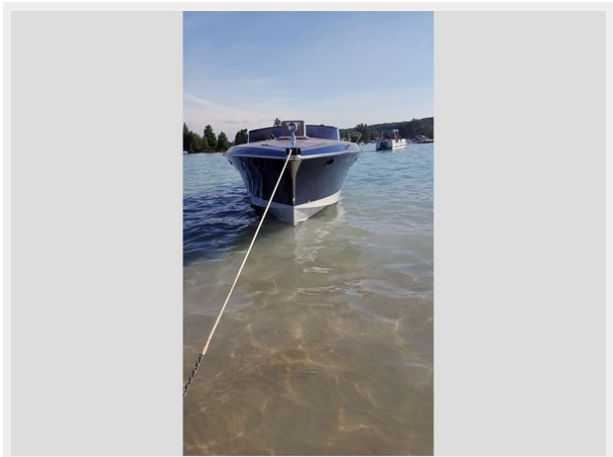
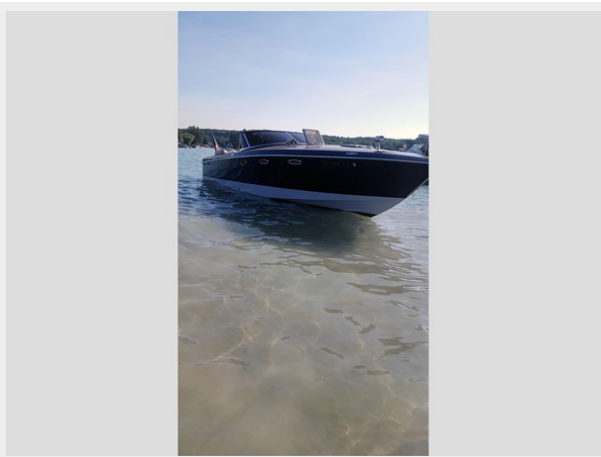
Engines: 2

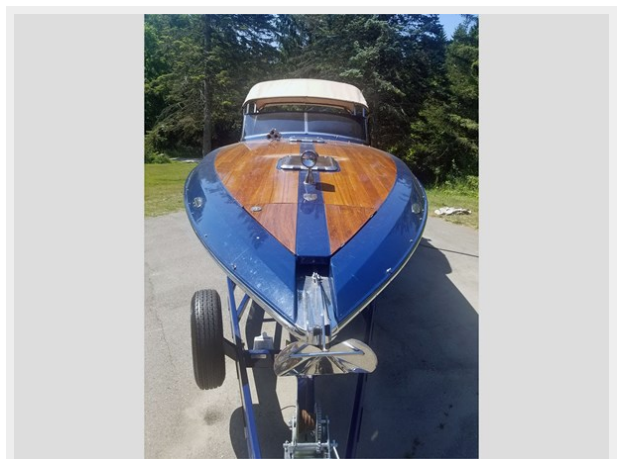
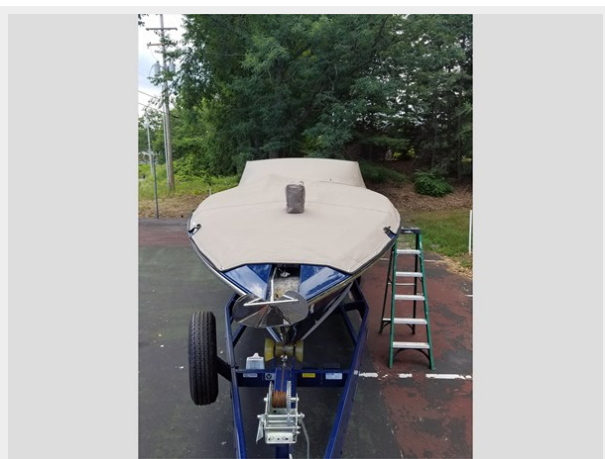
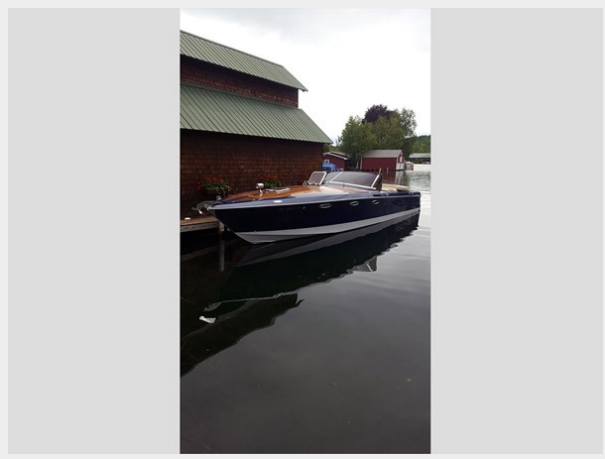
Manufacturer: Yanmar

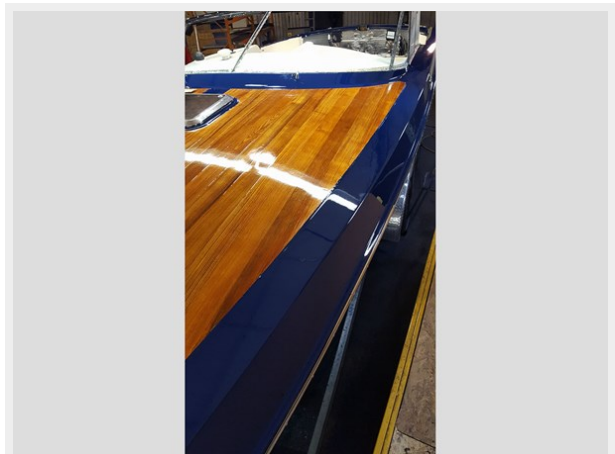
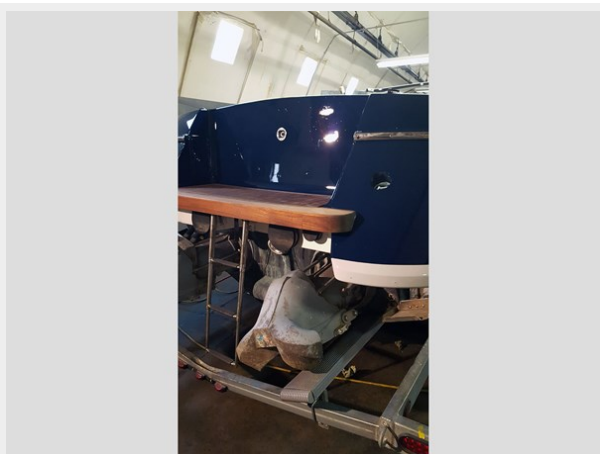
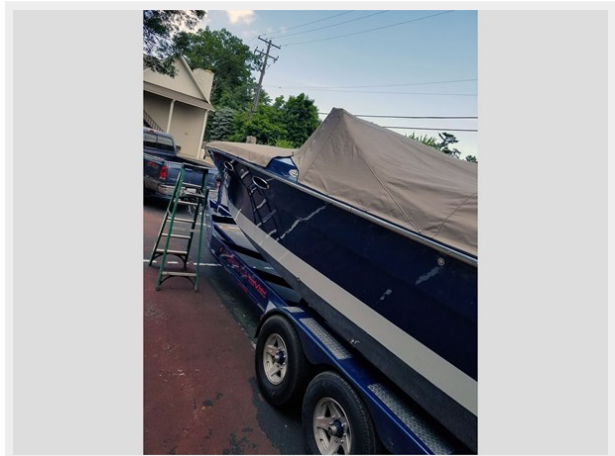
Engine Type: Inboard

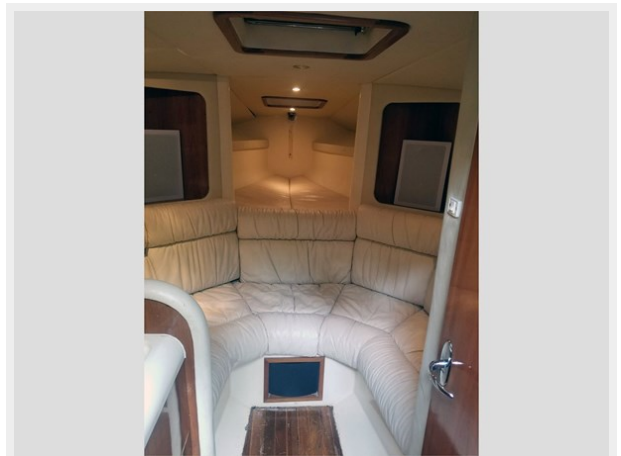
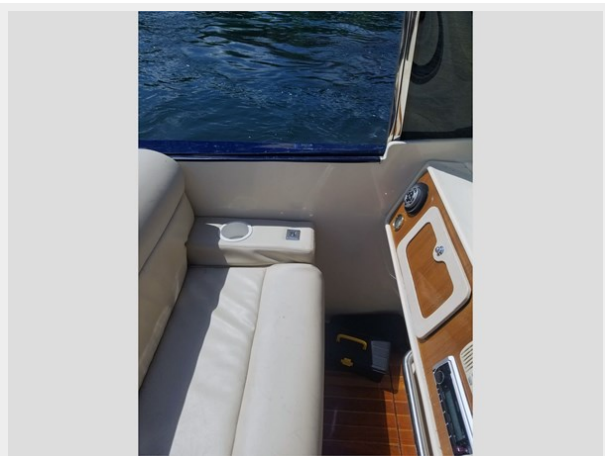
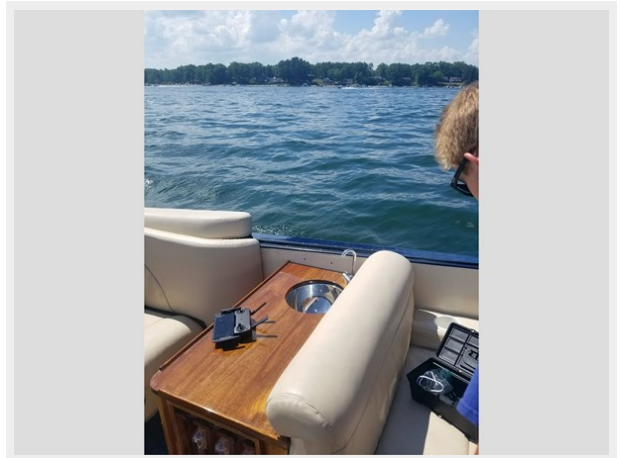
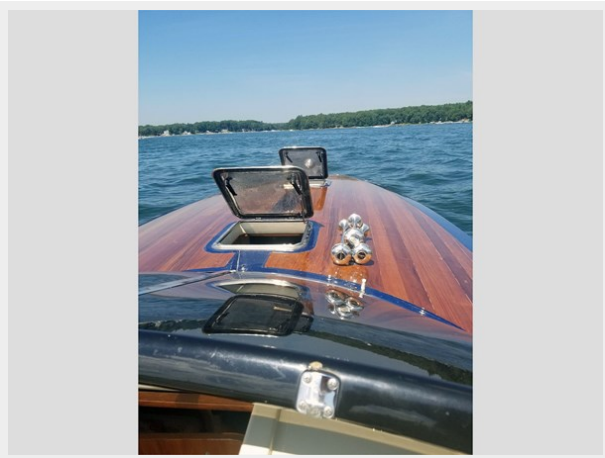
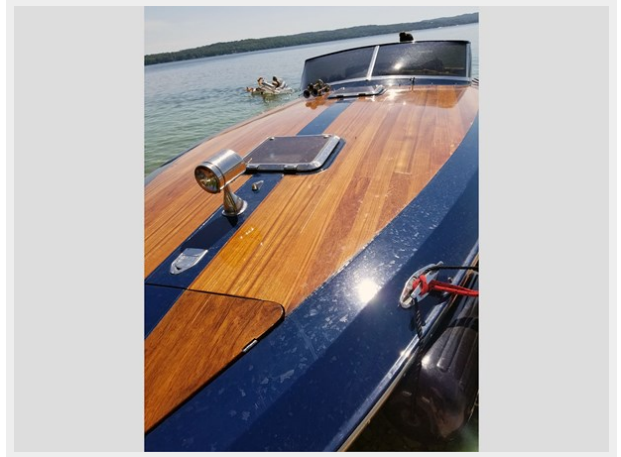
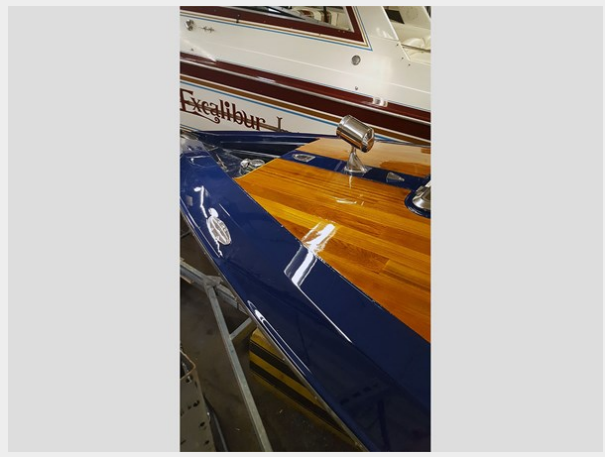
Fuel Type: Diesel

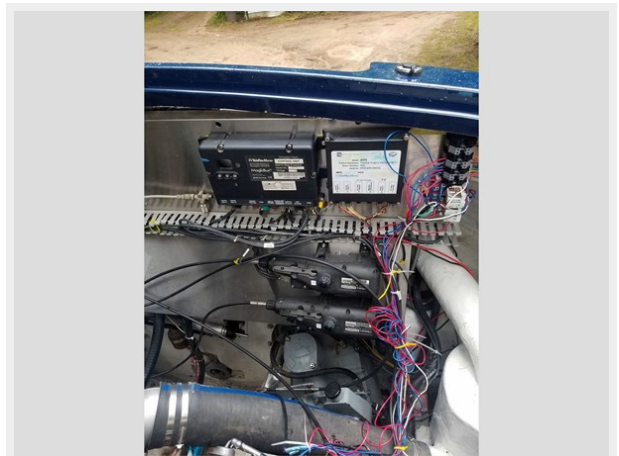
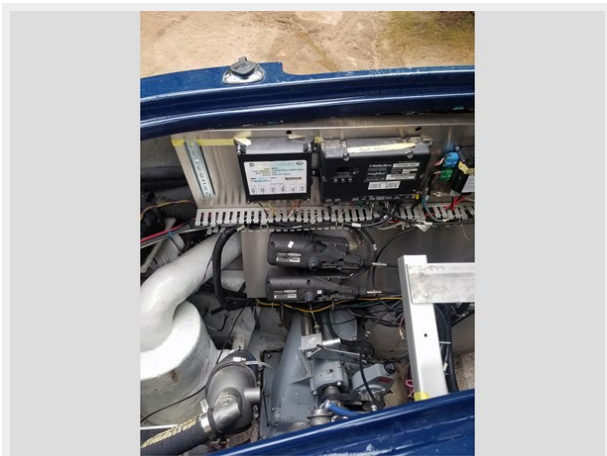
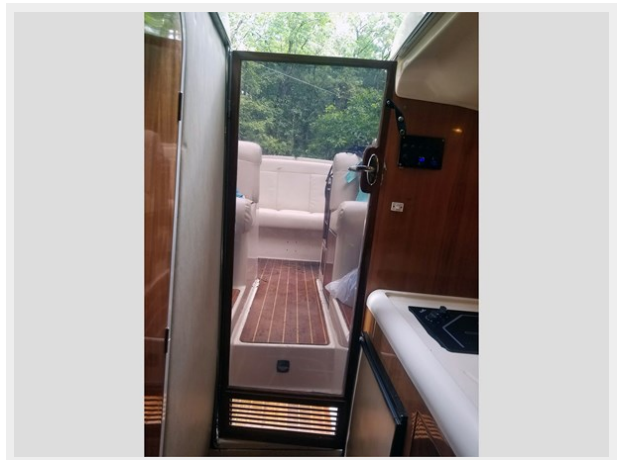
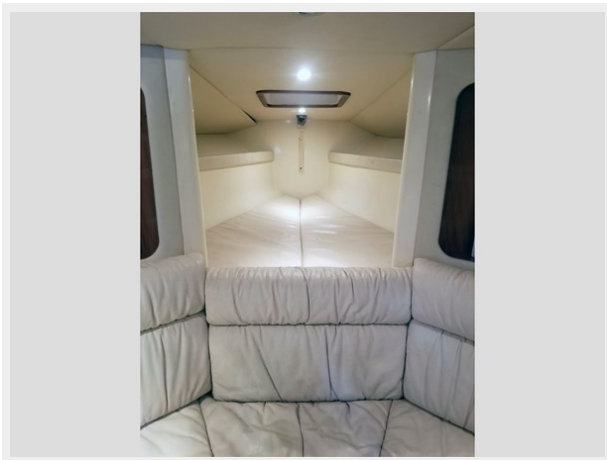
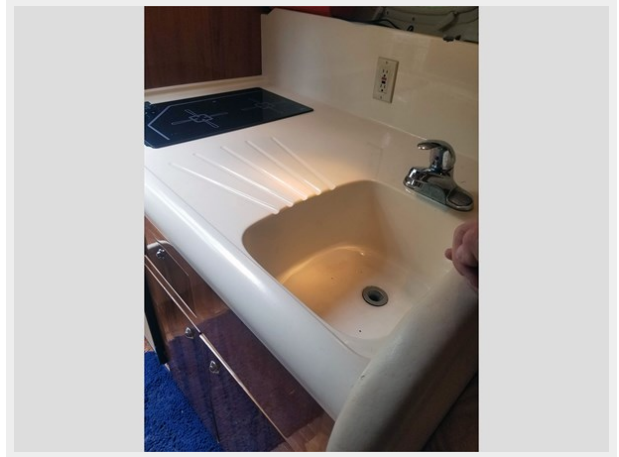
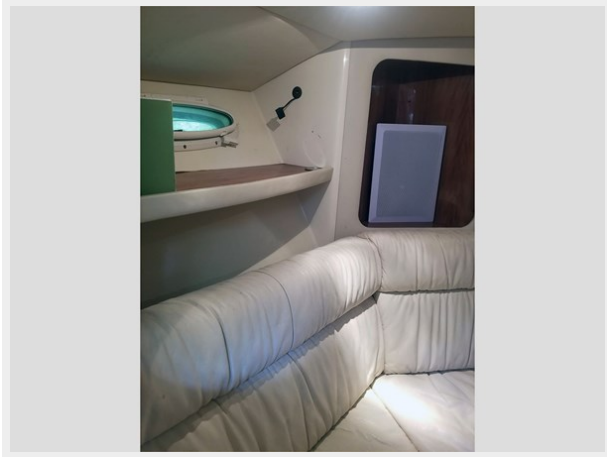
PHOTOS

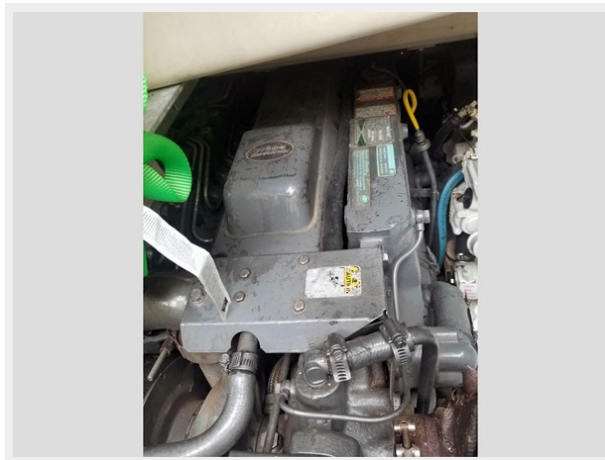
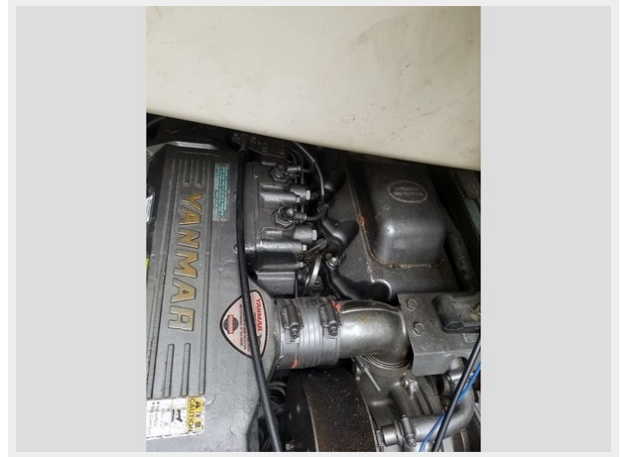
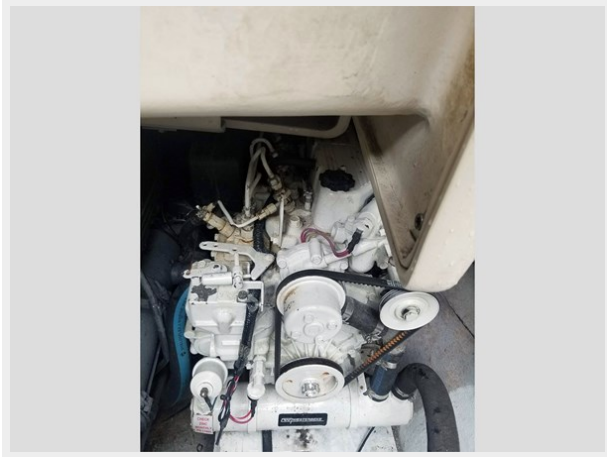












CONTACTS

Andrey Shestakov, leading yacht broker of the sales department of Shestakov Yacht Sales Inc. Shestakov Yacht Sales Inc., the official representative of the Miami/Fort Lauderdale FL headquarters.

Contact details

Email: **andrey@shestakovyachtsales.com**

Web: shestakovyachtsales.com/en/

Telephones

USA: **+1(954)274-4435**

Office hours

Monday – Saturday: **9:00 - 21:00** EDT

Sunday: **closed**

Address



Harbour Towne Marina, 850 NE 3rd St, STE 213, Dania, FL 33004