

## **SIZZLING 1 — ALBIN**



**Builder:** ALBIN

**Year Built:** 2007

**Model:** Sport Fisherman

**Price:** \$8,500 USD

**Location:** United States

**LOA:** 35' (10.67mm)

**Beam:** 12.33

**Max Draft:** 3' 9" (1.12mm)

Our experienced yacht broker, Andrey Shestakov, will help you choose and buy a yacht that best suits your needs **Sizzling 1 — ALBIN** from **our catalogue**. Presently, at **Shestakov Yacht Sales Inc.**, we have a wide variety of yachts available on **our sale's list**. We also work in close contact with all the big **yacht manufacturers** from all over the world.

If you would like to buy a yacht **Sizzling 1 — ALBIN** or would like help answering any questions concerning purchasing, selling or chartering a yacht, please call **+1(954)274-4435**

---

# TABLE OF CONTENTS

---

TABLE OF CONTENTS	2
SPECIFICATIONS	3
Overview	3
Basic Information	3
Dimensions	3
Hull and Deck Information	3
Engine Information	4
PHOTOS	5
CONTACTS	11
Contact details	11
Telephones	11
Office hours	11
Address	11

---

# SPECIFICATIONS

---

## Overview

---

### Actual Condition

This great looking boat was washed up on the dock during a hurricane in 2022. It did not sink but the engine compartment did flood. The engine is out of the boat but included in the sale. The engine was not run or serviced after flooding. The transmission was serviced and pickled.

The boat shows in decent condition for a partial sinker.

### Equipment

A trailer is not included in this sale.

Nationwide transportation is available through . Custom Cradles and shipment to port for overseas transport also supplied.

All products be they owned or brokered by Certified Sales, Inc., CS Auto & RV, or its associates, are sold AS-IS, WHERE-IS, NO WARRANTY OR GUARANTEE EXPRESSED OR IMPLIED. NO WARRANTIES OF MERCHANTABILITY AND FITNESS WHAT-SO-EVER. No verbal agreements can be applied to the sale of this product.

---

## Basic Information

---

**Category:** Sport Fisherman

**Model Year:** 2007

**Year Built:** 2007

**Country:** United States

---

## Dimensions

---

**LOA:** 35' (10.67mm)

**Beam:** 12.33

**Max Draft:** 3' 9" (1.12mm)

---

## Hull and Deck Information

---

**Hull Material:** Fiberglass

---

## Engine Information

---

**Engines:** 1

**Manufacturer:** Cummins

**Engine Type:** Inboard

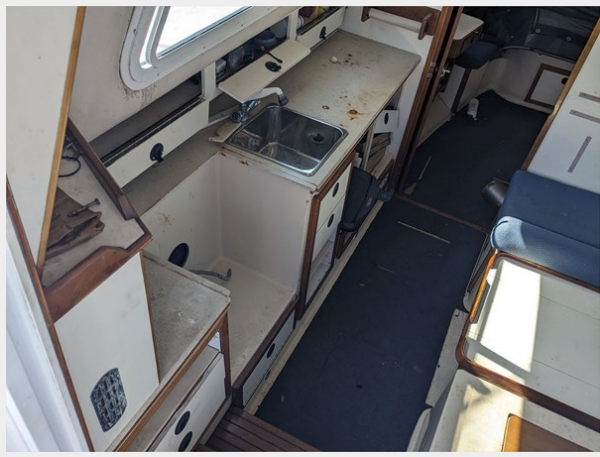
**Fuel Type:** Diesel

# PHOTOS

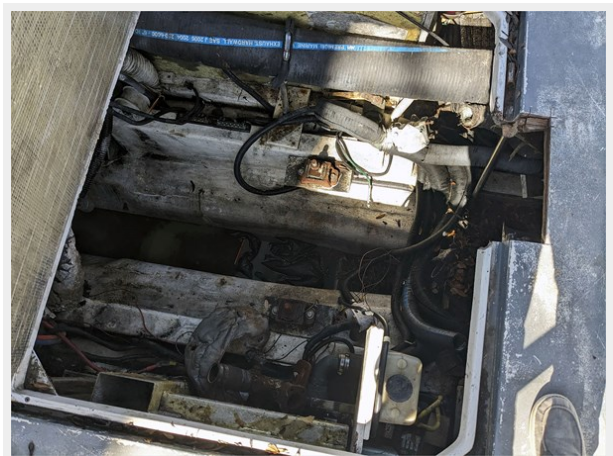
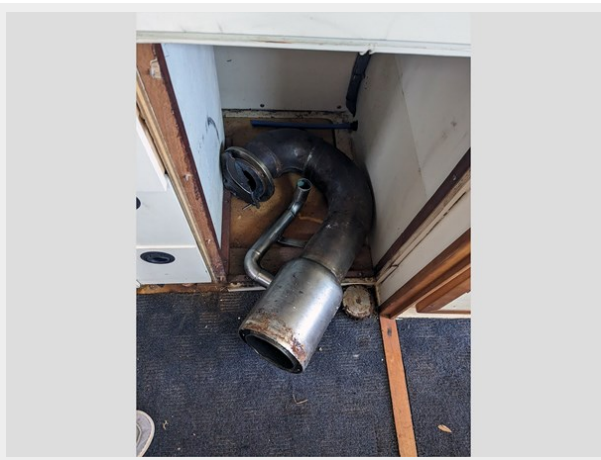














# CONTACTS

---

Andrey Shestakov, leading yacht broker of the sales department of Shestakov Yacht Sales Inc. Shestakov Yacht Sales Inc., the official representative of the Miami/Fort Lauderdale FL headquarters.

## Contact details

---

Email: **andrey@shestakovyachtsales.com**

Web: [shestakovyachtsales.com/en/](http://shestakovyachtsales.com/en/)

## Telephones

---

USA: **+1(954)274-4435**

## Office hours

---

Monday – Saturday: **9:00 - 21:00** EDT

Sunday: **closed**

## Address

---



Harbour Towne Marina, 850 NE 3rd St, STE 213, Dania, FL 33004