

2007 HALVORSEN GOURMET CRUISER — HALVORSEN



Builder: HALVORSEN

Year Built: 2007

Model: cruiser

Price: Price on Application

Location: United States

LOA: 32' (9.75mm)

Beam: 12

Max Draft: 3' 9" (1.12mm)

Our experienced yacht broker, Andrey Shestakov, will help you choose and buy a yacht that best suits your needs **2007 Halvorsen Gourmet Cruiser 32 — HALVORSEN** from **our catalogue**. Presently, at **Shestakov Yacht Sales Inc.**, we have a wide variety of yachts available on **our sale's list**. We also work in close contact with all the big **yacht manufacturers** from all over the world.

If you would like to buy a yacht **2007 Halvorsen Gourmet Cruiser 32 — HALVORSEN** or would like help answering any questions concerning purchasing, selling or chartering a yacht, please call **+1(954)274-4435**

TABLE OF CONTENTS

TABLE OF CONTENTS	2
SPECIFICATIONS	3
Overview	3
Basic Information	3
Dimensions	3
Speed, Capacities and Weight	4
Hull and Deck Information	4
Engine Information	4
PHOTOS	5
CONTACTS	14
Contact details	14
Telephones	14
Office hours	14
Address	14

SPECIFICATIONS

Overview

General Description

Builders: Yardway Marine Ltd Designer: Harvey Halvorsen This beautiful 32' Halverson is equipped with Cummins 4BT 155HP X2-Fully reman by Bosche Marine 2023. This Yacht was commissioned to be completely refit by the owner. The owner, as many of us over time, ran low on funds leaving the Yacht unfinished. The yard where the work was being performed now has the ownership documents. This is a great opportunity for a handy man because lots of repairs have been completed. Which includes both motors benched and redone. You be the judge and put your best offer forward.

Equipment

A trailer is not included in this sale.

Nationwide transportation is available through . Custom Cradles and shipment to port for overseas transport also supplied

All products be they owned or brokered by Certified Sales, Inc., CS Auto & RV, or its associates, are sold AS-IS, WHERE-IS, NO WARRANTY OR GUARANTEE EXPRESSED OR IMPLIED. NO WARRANTIES OF MERCHANTABILITY AND FITNESS WHAT-SO-EVER. No verbal agreements can be applied to the sale of this product.

Basic Information

Category: cruiser

Model Year: 2007

Year Built: 2007

Country: United States

Dimensions

LOA: 32' (9.75mm)

Beam: 12

Max Draft: 3' 9" (1.12mm)

Speed, Capacities and Weight

Water Capacity: 120 Gallons

Holding Tank: 25 Gal Gallons

Fuel Capacity: 112 Gal Gallons

Hull and Deck Information

Hull Material: Fiberglass

Engine Information

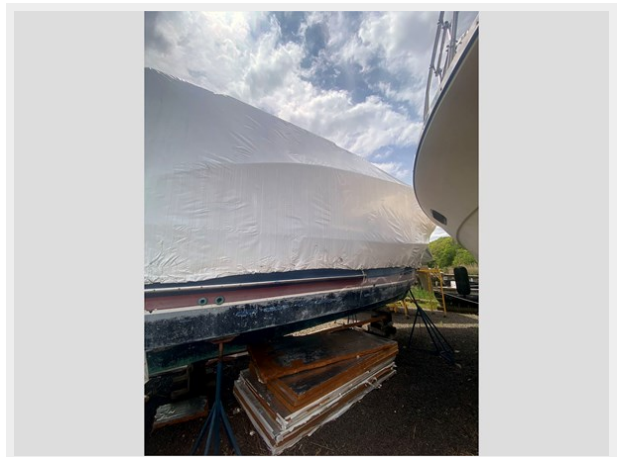
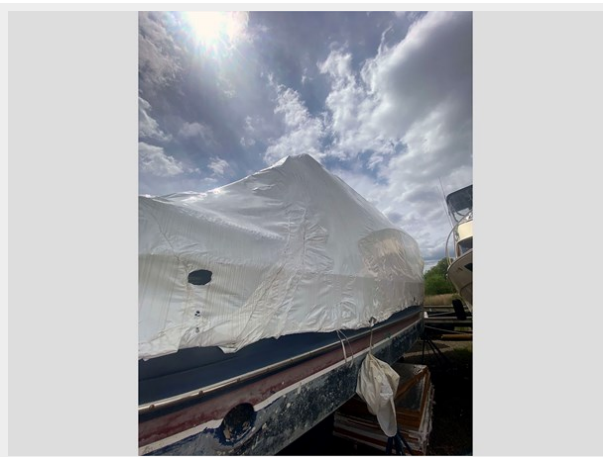
Engines: 2

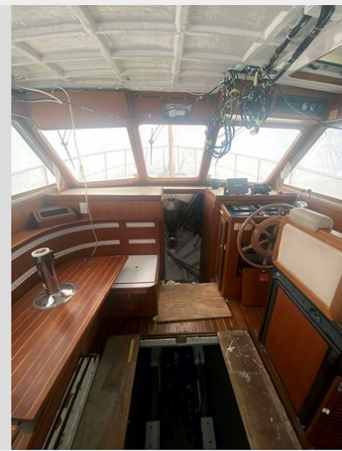
Manufacturer: Cummins

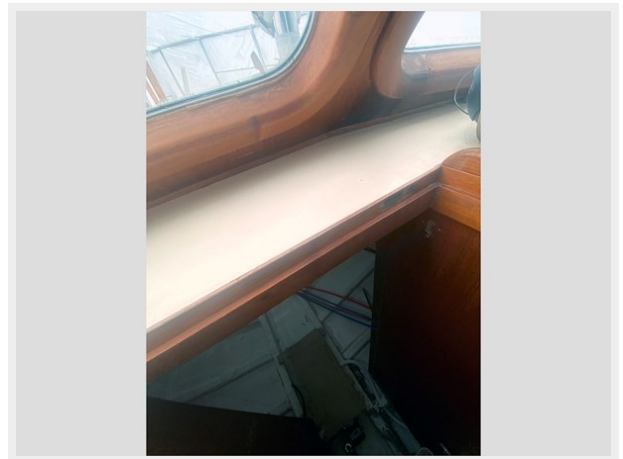
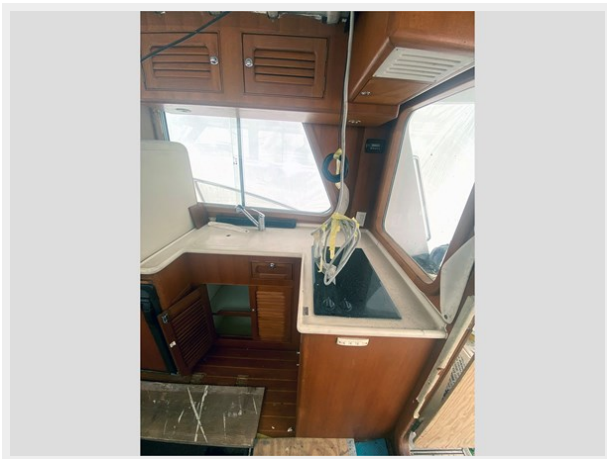
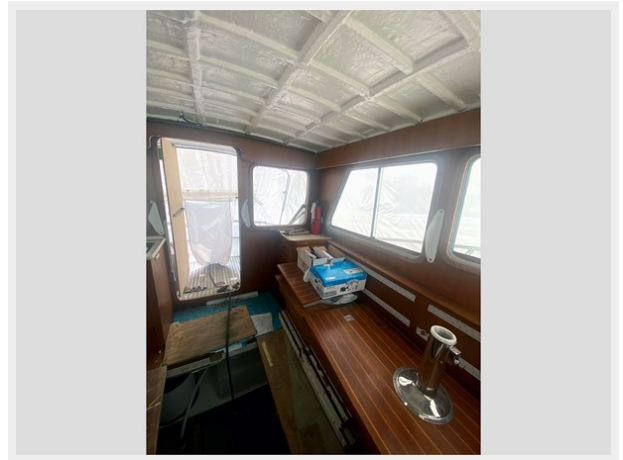
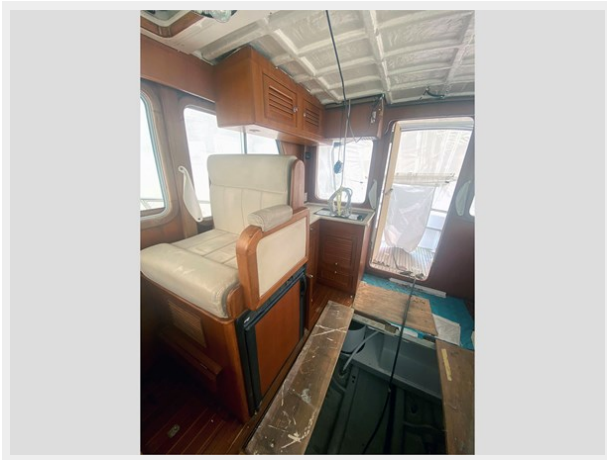
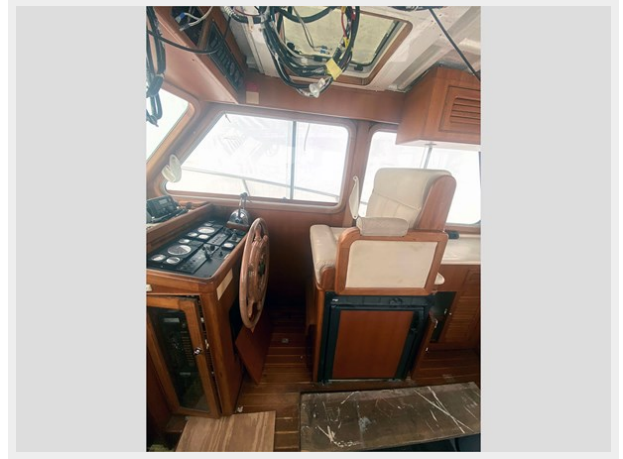
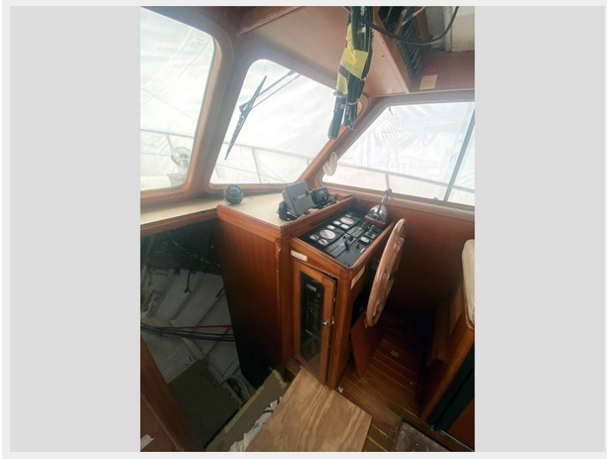
Engine Type: Inboard

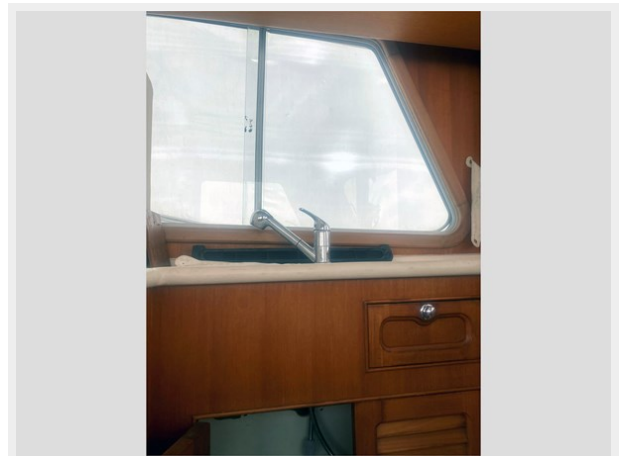
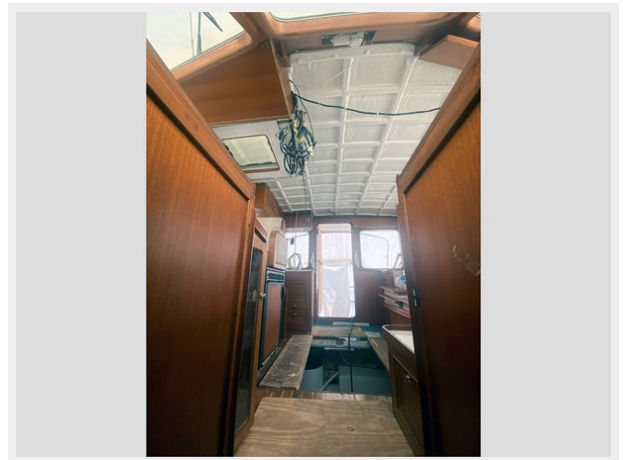
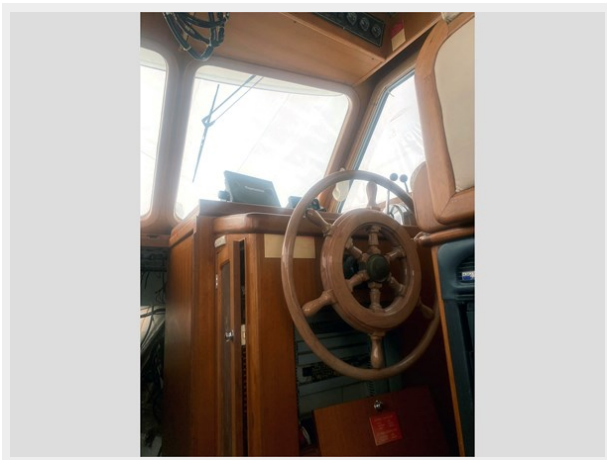
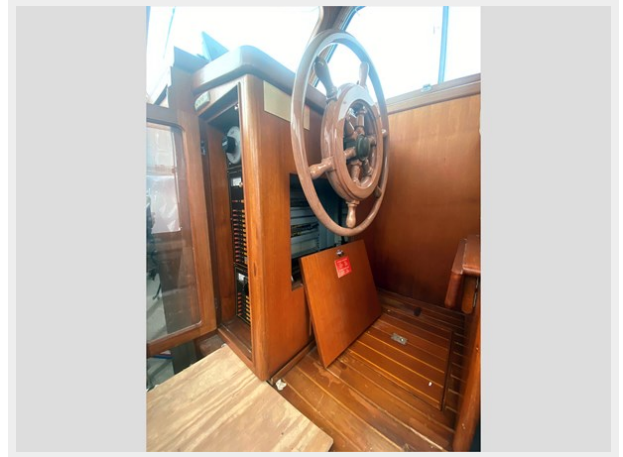
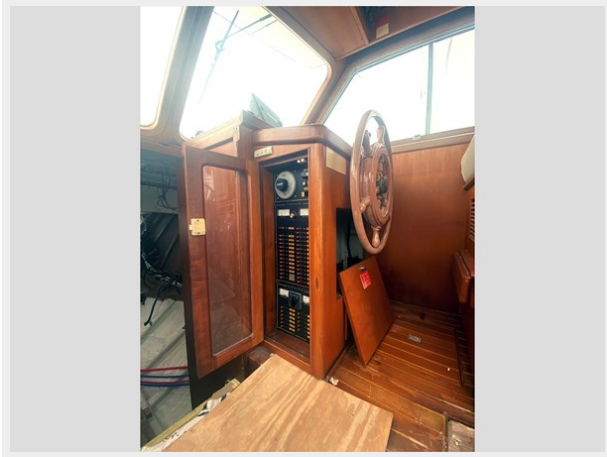
Fuel Type: Diesel

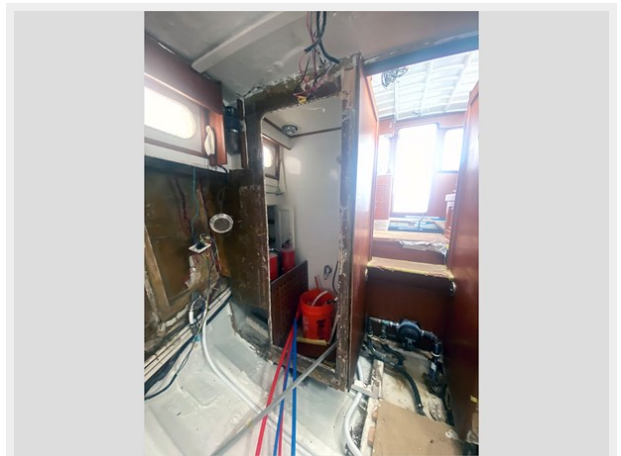
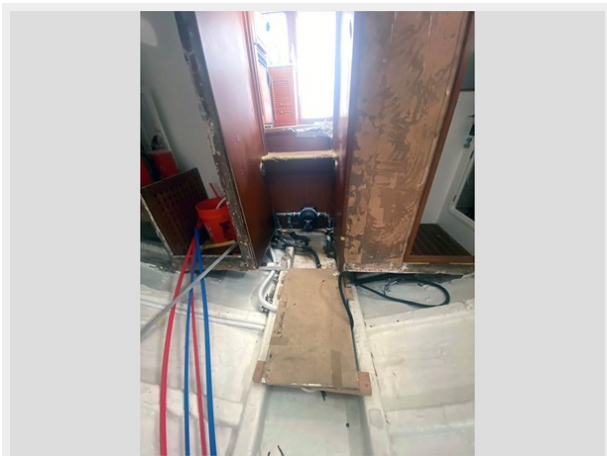
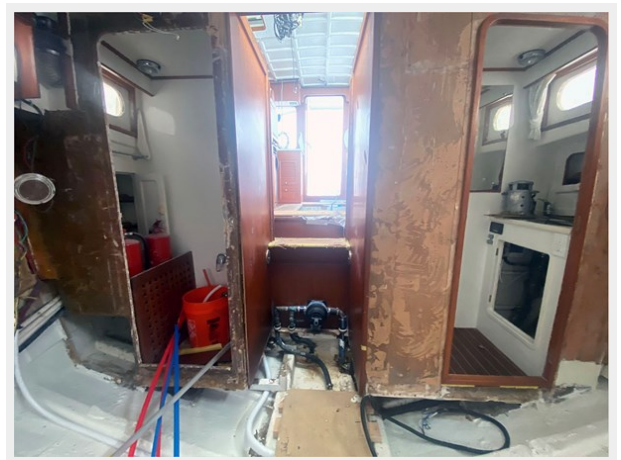
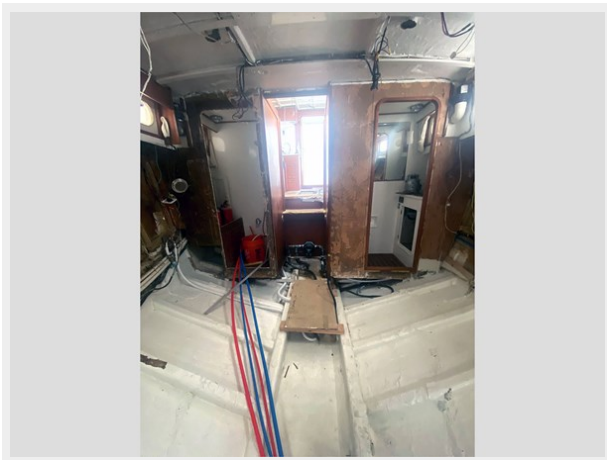
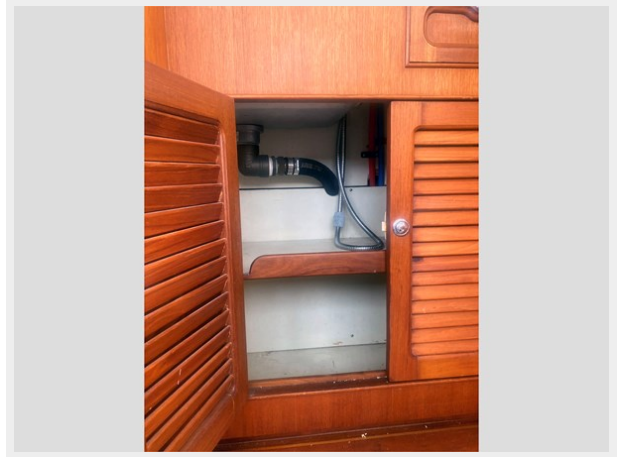
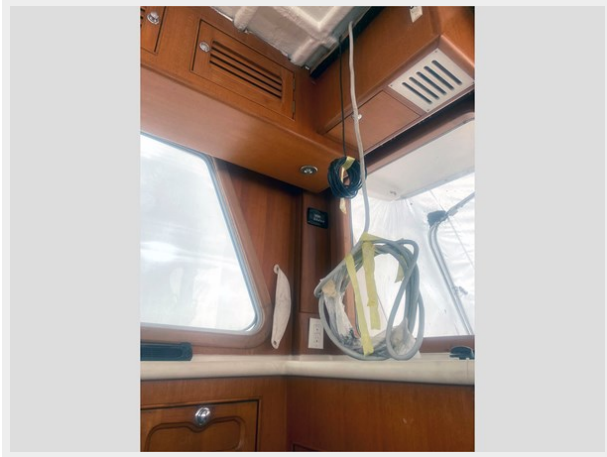
PHOTOS

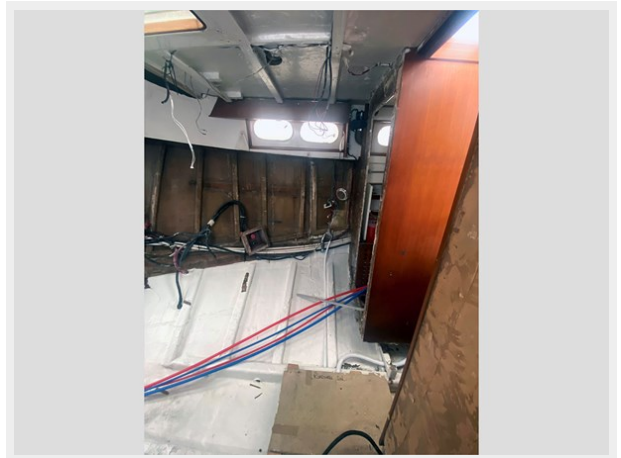
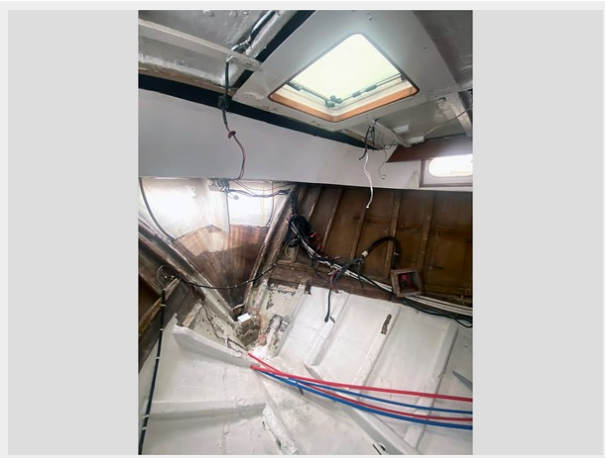
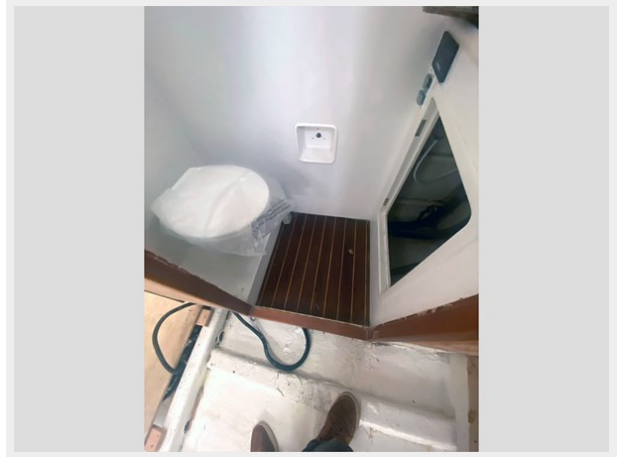
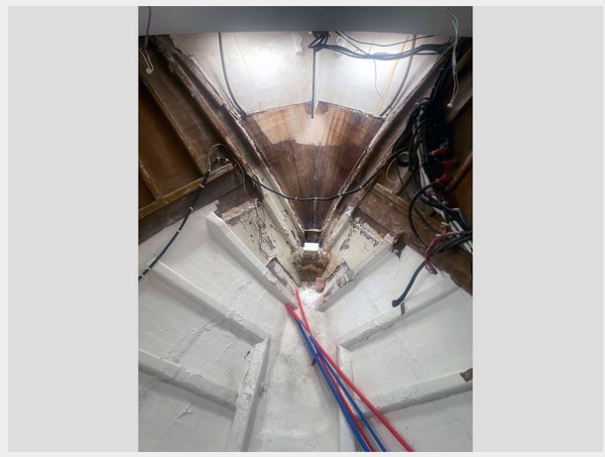


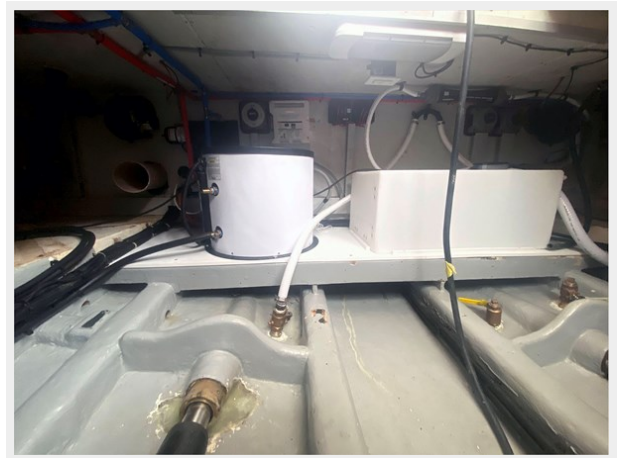




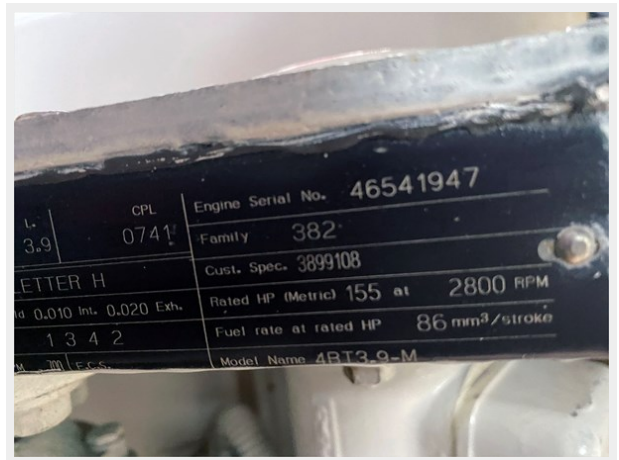












CONTACTS

Andrey Shestakov, leading yacht broker of the sales department of Shestakov Yacht Sales Inc. Shestakov Yacht Sales Inc., the official representative of the Miami/Fort Lauderdale FL headquarters.

Contact details

Email: **andrey@shestakovyachtsales.com**

Web: shestakovyachtsales.com/en/

Telephones

USA: **+1(954)274-4435**

Office hours

Monday – Saturday: **9:00 - 21:00** EDT

Sunday: **closed**

Address



Harbour Towne Marina, 850 NE 3rd St, STE 213, Dania, FL 33004