

NEPTUNUS 5616 PRINCE — NEPTUNUS



Builder: NEPTUNUS

Year Built: 2000

Model: cruiser

Price: \$279,999 USD

Location: United States

LOA: 56' (17.07mm)

Beam: 15.42

Min Draft: 5' (1.5mm)

Max Draft: 5' (1.5mm)

Cruise Speed: 23 Knots Kts. (26 MPH)

Max Speed: 28 Knots Kts. (32 MPH)

Our experienced yacht broker, Andrey Shestakov, will help you choose and buy a yacht that best suits your needs **NEPTUNUS 5616 PRINCE — NEPTUNUS** from **our catalogue**. Presently, at **Shestakov Yacht Sales Inc.**, we have a wide variety of yachts available on **our sale's list**. We also work in close contact with all the big **yacht manufacturers** from all over the world.

If you would like to buy a yacht **NEPTUNUS 5616 PRINCE — NEPTUNUS** or would like help answering any questions concerning purchasing, selling or chartering a yacht, please call **+1(954)274-4435**

TABLE OF CONTENTS

TABLE OF CONTENTS	2
SPECIFICATIONS	4
Overview	4
Basic Information	4
Dimensions	4
Speed, Capacities and Weight	4
Accommodations	5
Hull and Deck Information	5
Engine Information	5
PHOTOS	6
01.4	6
01.3	6
01.5	6
01.6	6
01.7	6
01.8	6
01.9	7
02.1	7
02.2	7
02.3	7
02.4	7
02.5	7
02.7	8
02.6	8
03.3	8
03.5	8
04.3	8
03.7	8

04.4	9
04.6	9
04.7	9
05.2	9
05.4	9
05.5	9
06.2	9
06.4	9
06.5	10
06.6	10
06.7	10
07.3	10
07.4	11
08.3	11
08.5	11
08.4	11
08.6	12
08.7	12
08.8	12
09.4	12
09.5	12
09.6	12
09.7	13
CONTACTS	14
Contact details	14
Telephones	14
Office hours	14
Address	14

SPECIFICATIONS

Overview

2000 Neptunus 56

Clean and Ready to Go!!

Bring Offers!!

Bottom Paint/Zincs/Engine Services Recently Done!

Boat is in Excellent Condition and It is kept in a covered slip and washed regularly and waxed twice a year!!

Ready for Offers!!

Basic Information

Category: cruiser

Model Year: 2000

Year Built: 2000

Country: United States

Dimensions

LOA: 56' (17.07mm)

Beam: 15.42

Min Draft: 5' (1.5mm)

Max Draft: 5' (1.5mm)

Speed, Capacities and Weight

Cruise Speed: 23 Knots Kts. (26 MPH) **Cruise Speed Range:** 230

Max Speed: 28 Knots Kts. (32 MPH) **Max Speed Range:** 195 Kts.

Gross Tonnage: 28 Pounds

Water Capacity: 150 Gallons

Holding Tank: 60 Gal Gallons

Fuel Capacity: 680 Gal Gallons

Accommodations

Total Cabins: 2

Hull and Deck Information

Hull Material: Fiberglass

Deck Material: Fiberglass

Hull Configuration: Modified V-Hull

Hull Designer: Neptunus

Interior Designer: Neptunus

Engine Information

Engines: 2

Manufacturer: Caterpillar

Engine Type: Inboard

Fuel Type: Diesel

PHOTOS

01.3



01.4



01.5



01.6



01.7



01.8



01.9



02.1



02.2



02.3



02.4



02.5



02.6



02.7



03.3



03.5



03.7



04.3



04.4



04.6



04.7



05.2



05.4



05.5



06.2



06.4



06.5



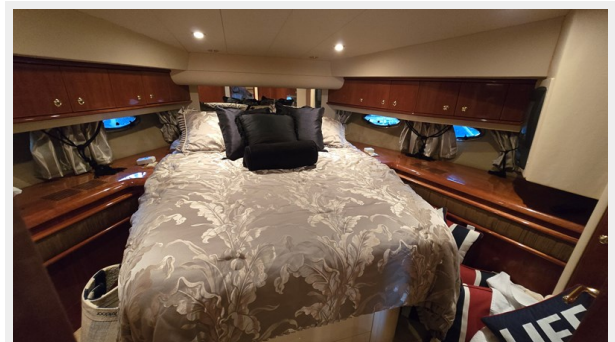
06.6



06.7



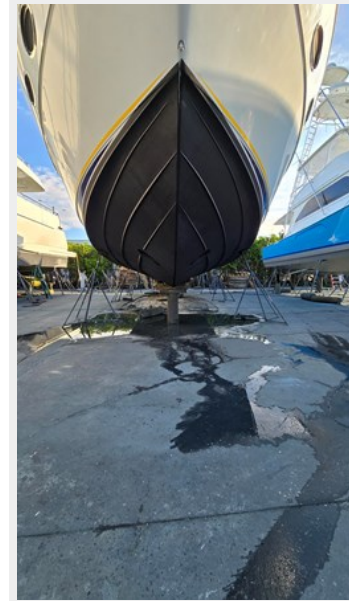
07.3



07.4



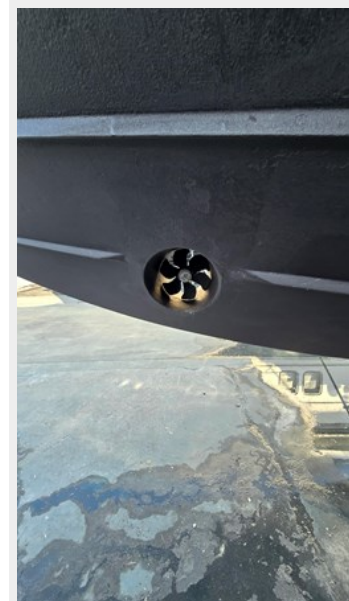
08.3



08.4



08.5



08.6



08.7



08.8



09.4



09.5



09.6



09.7



CONTACTS

Andrey Shestakov, leading yacht broker of the sales department of Shestakov Yacht Sales Inc. Shestakov Yacht Sales Inc., the official representative of the Miami/Fort Lauderdale FL headquarters.

Contact details

Email: **andrey@shestakovyachtsales.com**

Web: shestakovyachtsales.com/en/

Telephones

USA: **+1(954)274-4435**

Office hours

Monday – Saturday: **9:00 - 21:00** EDT

Sunday: **closed**

Address



Harbour Towne Marina, 850 NE 3rd St, STE 213, Dania, FL 33004