

## 2001 SEA RAY 245 — SEA RAY



**Builder:** SEA RAY

**LOA:** 24' (7.32mm)

**Year Built:** 2001

**Beam:** 8.5

**Model:** cruiser

**Price:** Price on Application

**Location:** United States

Our experienced yacht broker, Andrey Shestakov, will help you choose and buy a yacht that best suits your needs **2001 Sea Ray 245 — SEA RAY** from our catalogue. Presently, at **Shestakov Yacht Sales Inc.**, we have a wide variety of yachts available on our sale's list. We also work in close contact with all the big **yacht manufacturers** from all over the world.

If you would like to buy a yacht **2001 Sea Ray 245 — SEA RAY** or would like help answering any questions concerning purchasing, selling or chartering a yacht, please call **+1(954)274-4435**

---

# TABLE OF CONTENTS

---

|                           |   |
|---------------------------|---|
| TABLE OF CONTENTS         | 2 |
| SPECIFICATIONS            | 3 |
| Overview                  | 3 |
| Basic Information         | 3 |
| Dimensions                | 3 |
| Accommodations            | 3 |
| Hull and Deck Information | 4 |
| Engine Information        | 4 |
| PHOTOS                    | 5 |
| CONTACTS                  | 8 |
| Contact details           | 8 |
| Telephones                | 8 |
| Office hours              | 8 |
| Address                   | 8 |

---

# SPECIFICATIONS

---

## Overview

---

Donation Actual Condition

This 245 Sea Ray shows well. It will need regular seasonal prep. The systems appear to be in good overall condition. She should make a great boat. Get your summer started.

Equipment

A trailer is not included in this sale.

Nationwide transportation is available through . Custom Cradles and shipment to port for overseas transport also supplied.

All products be they owned or brokered by Certified Sales, Inc., CS Auto & RV, or its associates, are sold AS-IS, WHERE-IS, NO WARRANTY OR GUARANTEE EXPRESSED OR IMPLIED. NO WARRANTIES OF MERCHANTABILITY AND FITNESS WHAT-SO-EVER. No verbal agreements can be applied to the sale of this product.

---

## Basic Information

---

**Category:** cruiser

**Sub Category:** Express

**Model Year:** 2001

**Year Built:** 2001

**Country:** United States

---

## Dimensions

---

**LOA:** 24' (7.32mm)

**Beam:** 8.5

---

## Accommodations

---

**Total Cabins:** 1

---

## Hull and Deck Information

---

**Hull Material:** Fiberglass

---

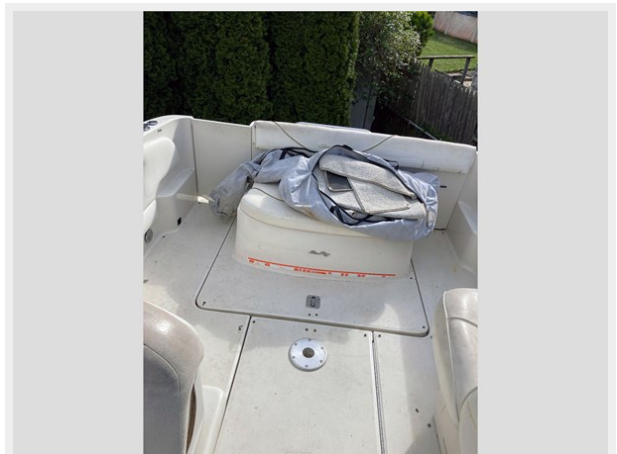
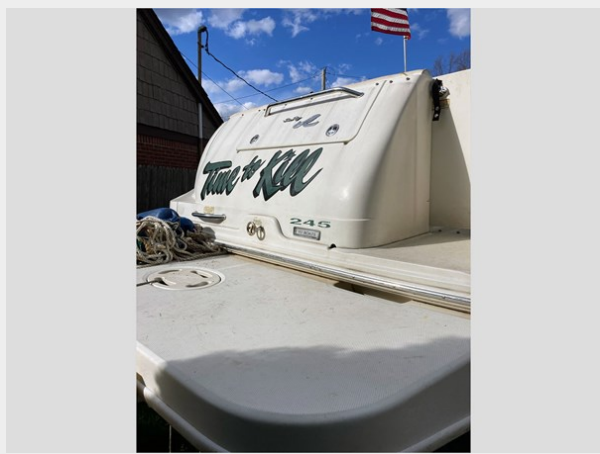
## Engine Information

---

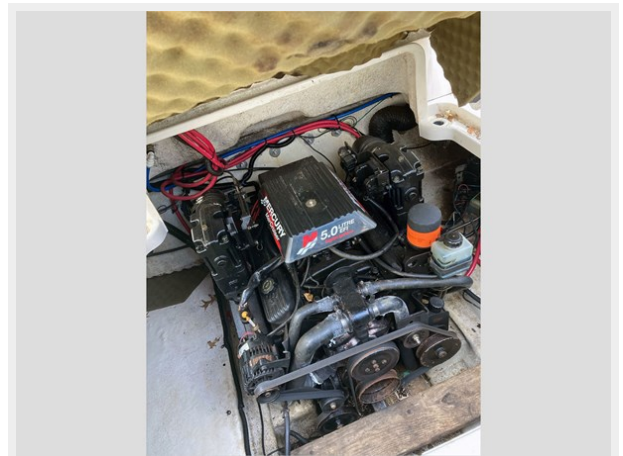
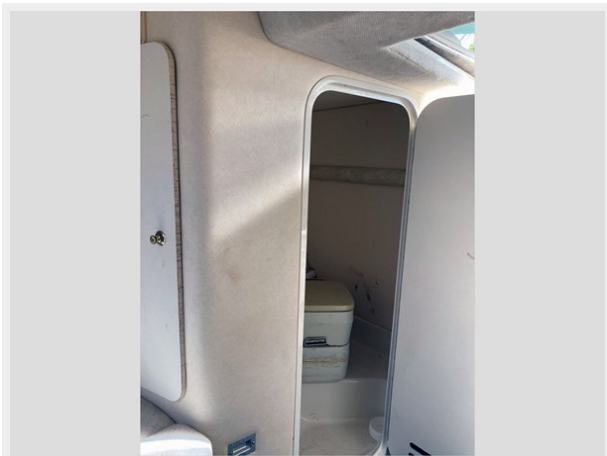
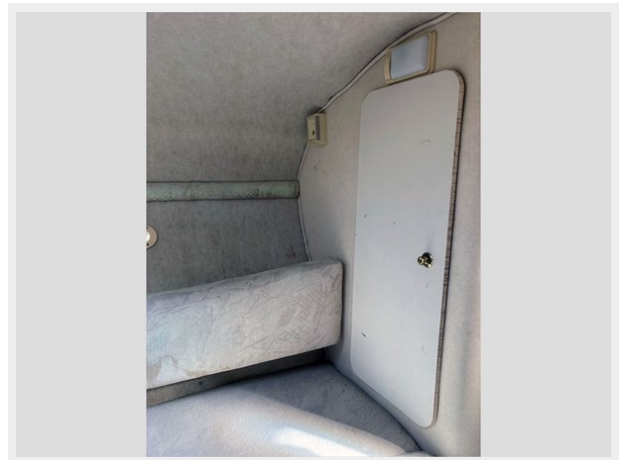
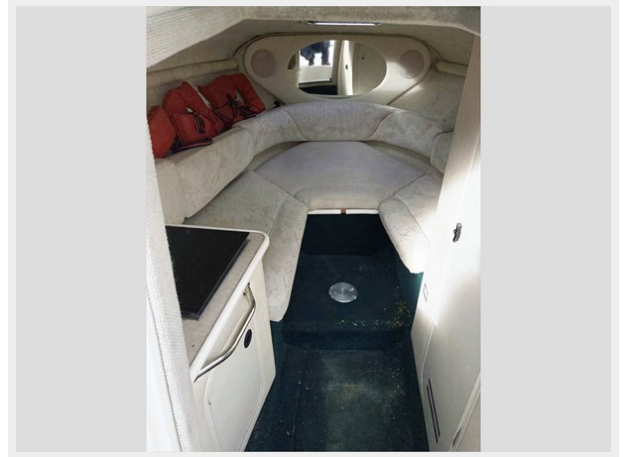
**Engines:** 2

**Manufacturer:** Mercruiser

# PHOTOS









# CONTACTS

---

Andrey Shestakov, leading yacht broker of the sales department of Shestakov Yacht Sales Inc. Shestakov Yacht Sales Inc., the official representative of the Miami/Fort Lauderdale FL headquarters.

## Contact details

---

Email: **andrey@shestakovyachtsales.com**

Web: [shestakovyachtsales.com/en/](http://shestakovyachtsales.com/en/)

## Telephones

---

USA: **+1(954)274-4435**

## Office hours

---

Monday – Saturday: **9:00 - 21:00** EDT

Sunday: **closed**

## Address

---



Harbour Towne Marina, 850 NE 3rd St, STE 213, Dania, FL 33004