

# 2000 REGAL 2760 COMMODORE — REGAL



**Builder:** REGAL

**Year Built:** 2000

**Model:** cruiser

**Price:** Price on Application

**Location:** United States

**LOA:** 31' (9.45mm)

**Beam:** 9.91

**Max Draft:** 3' 3" (0.99mm)

Our experienced yacht broker, Andrey Shestakov, will help you choose and buy a yacht that best suits your needs **2000 Regal 2760 Commodore — REGAL** from **our catalogue**. Presently, at **Shestakov Yacht Sales Inc.**, we have a wide variety of yachts available on **our sale's list**. We also work in close contact with all the big **yacht manufacturers** from all over the world.

If you would like to buy a yacht **2000 Regal 2760 Commodore — REGAL** or would like help answering any questions concerning purchasing, selling or chartering a yacht, please call **+1(954)274-4435**

---

# TABLE OF CONTENTS

---

TABLE OF CONTENTS	2
SPECIFICATIONS	3
Overview	3
Basic Information	3
Dimensions	4
Hull and Deck Information	4
Engine Information	4
PHOTOS	5
CONTACTS	16
Contact details	16
Telephones	16
Office hours	16
Address	16

---

# SPECIFICATIONS

---

## Overview

---

### Donation General Description

This classic express cruiser offers the perfect combination of style, comfort, and performance, making it an ideal choice for both seasoned boaters and newcomers to the water. Whether you're looking for a day of cruising, fishing, or overnighting, the 2000 Regal Commodore offers versatility and style in one package.

### Actual Condition

This Regal 2760 Commodore is in need of a thorough cleaning, with visibly worn cushions that have seen amateur repair attempts-typical signs of age-related wear and tear. Beneath the engine hatch, you'll discover twin Volvo Penta 4.3GL engines. While the donor reports maintenance work on the port engine in 2018 and the starboard engine's original condition, we are unable to verify the current state or functionality of the engines. Notably, there is corrosion present on the outdrive. The interior, with the exception of requiring a comprehensive cleaning, is in generally good condition. We invite you to conduct a personal inspection to form your own judgment regarding this vessel's suitability.

### Equipment

A trailer is not included in this sale.

Nationwide transportation is available through . Custom Cradles and shipment to port for overseas transport also supplied.

All products be they owned or brokered by Certified Sales, Inc., CS Auto & RV, or its associates, are sold AS-IS, WHERE-IS, NO WARRANTY OR GUARANTEE EXPRESSED OR IMPLIED. NO WARRANTIES OF MERCHANTABILITY AND FITNESS WHAT-SO-EVER. No verbal agreements can be applied to the sale of this product

---

## Basic Information

---

**Category:** cruiser

**Sub Category:** Express

**Model Year:** 2000

**Year Built:** 2000

**Country:** United States

---

## Dimensions

---

**LOA:** 31' (9.45mm)

**Beam:** 9.91

**Max Draft:** 3' 3" (0.99mm)

---

## Hull and Deck Information

---

**Hull Material:** Fiberglass

---

## Engine Information

---

**Engines:** 2

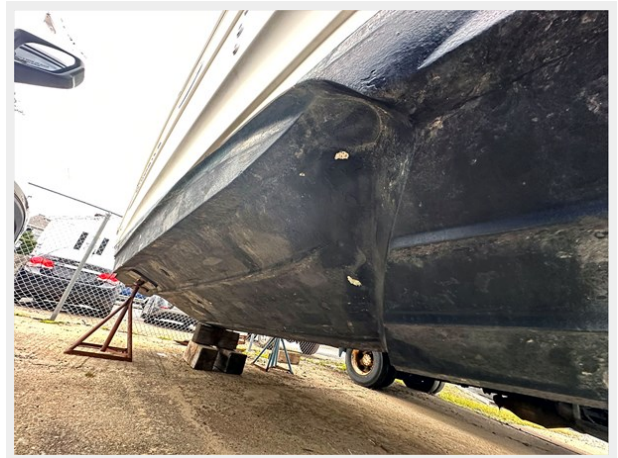
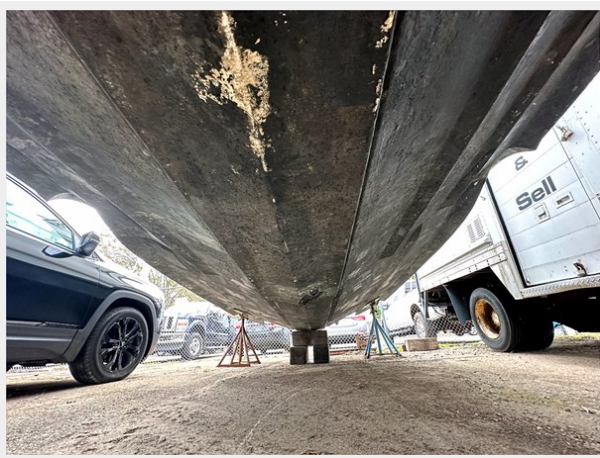
**Manufacturer:** Volvo Penta

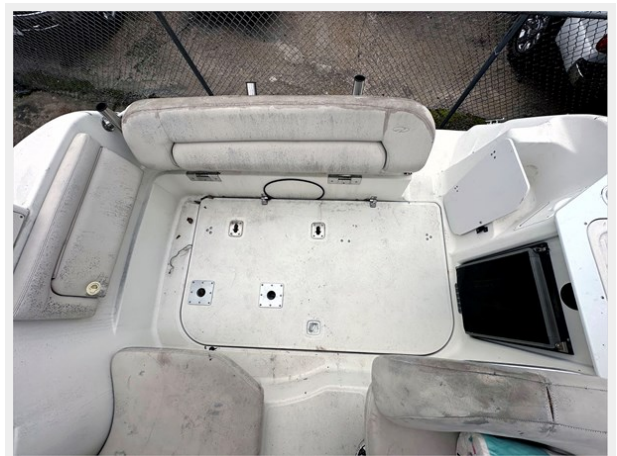
**Engine Type:** I/O

**Fuel Type:** Gas

# PHOTOS



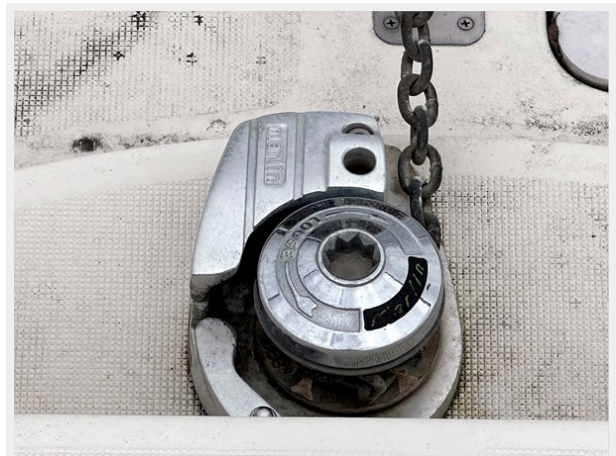




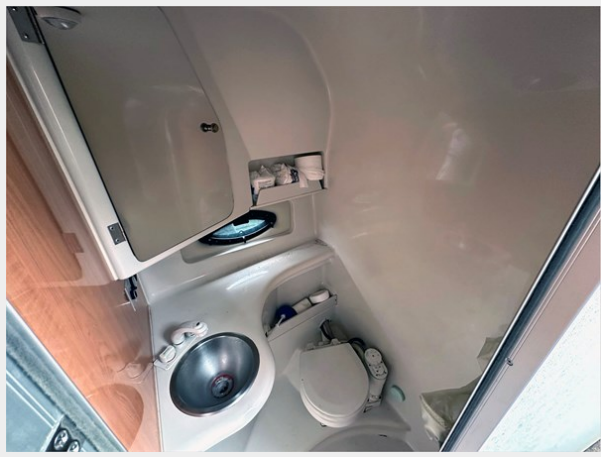


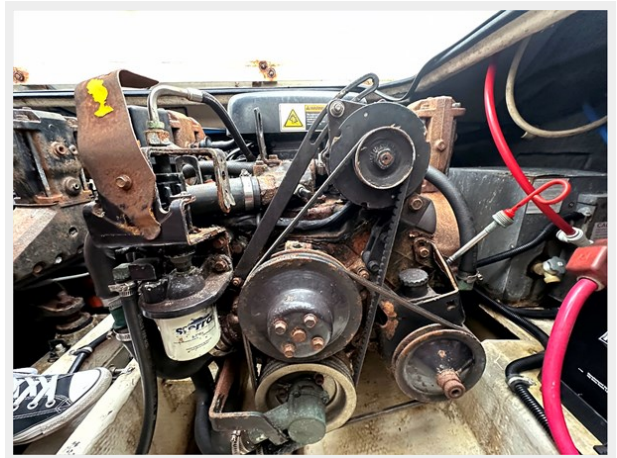


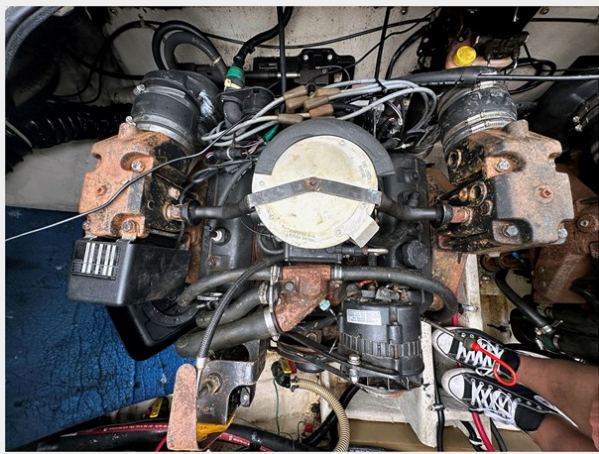


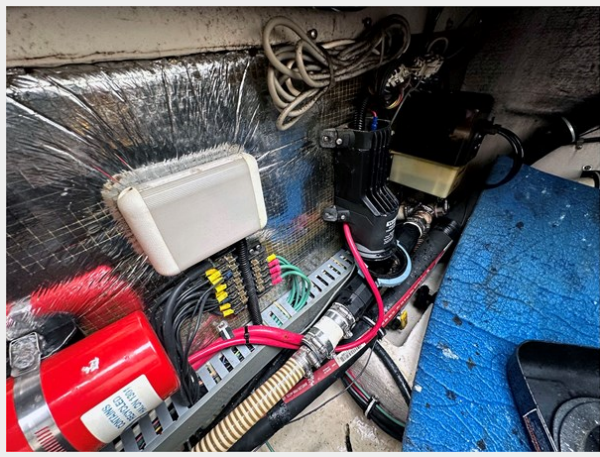












# CONTACTS

---

Andrey Shestakov, leading yacht broker of the sales department of Shestakov Yacht Sales Inc. Shestakov Yacht Sales Inc., the official representative of the Miami/Fort Lauderdale FL headquarters.

## Contact details

---

Email: **andrey@shestakovyachtsales.com**

Web: [shestakovyachtsales.com/en/](http://shestakovyachtsales.com/en/)

## Telephones

---

USA: **+1(954)274-4435**

## Office hours

---

Monday – Saturday: **9:00 - 21:00** EDT

Sunday: **closed**

## Address

---



Harbour Towne Marina, 850 NE 3rd St, STE 213, Dania, FL 33004