

1998 SEA RAY 330 DA — SEA RAY



Builder: SEA RAY

Year Built: 1998

Model: cruiser

Price: Price on Application

Location: United States

LOA: 33' 6" (10.21mm)

Beam: 11.41

Max Draft: 2' 9" (0.84mm)

Our experienced yacht broker, Andrey Shestakov, will help you choose and buy a yacht that best suits your needs **1998 Sea Ray 330 DA — SEA RAY** from **our catalogue**. Presently, at **Shestakov Yacht Sales Inc.**, we have a wide variety of yachts available on **our sale's list**. We also work in close contact with all the big **yacht manufacturers** from all over the world.

If you would like to buy a yacht **1998 Sea Ray 330 DA — SEA RAY** or would like help answering any questions concerning purchasing, selling or chartering a yacht, please call **+1(954)274-4435**

TABLE OF CONTENTS

TABLE OF CONTENTS	2
SPECIFICATIONS	3
Overview	3
Basic Information	3
Dimensions	4
Hull and Deck Information	4
Engine Information	4
PHOTOS	5
CONTACTS	13
Contact details	13
Telephones	13
Office hours	13
Address	13

SPECIFICATIONS

Overview

Donation General Description

The Sea Ray 330 Sundancer offers an elegant solution for family cruising, blending sleek design with spacious interiors and impressive performance. Its open-plan layout features luxurious seating, a fully equipped galley, and a generous head with a shower, providing comfort and convenience for unforgettable journeys on the water.

Actual Condition

Introducing the "American Beauty," now available for best offers. This gem has been maintained, with the donor noting that routine preventative maintenance, such as changing fuel filters and spark plugs on the Starboard motor, is all that's required. The Port motor is already set, just needing the usual spring cleaning and waxing. It's reported that the engines were last operated in October 2023 before undergoing winterization for the season. Summer canvas is neatly stored in the V-berth and is in decent condition. While there may be a few quirky features or minor cosmetic repairs needed in some areas, overall, she's in great shape for her age. We encourage you to take a firsthand look at the vessel and form your own opinion. Overall, this vessel appears well-kept and offers a fantastic opportunity for a new owner to enjoy. Submit your best offer today to make it yours!

Equipment

A trailer is not included in this sale.

Nationwide transportation is available through . Custom Cradles and shipment to port for overseas transport also supplied.

All products be they owned or brokered by Certified Sales, Inc., CS Auto & RV, or its associates, are sold AS-IS, WHERE-IS, NO WARRANTY OR GUARANTEE EXPRESSED OR IMPLIED. NO WARRANTIES OF MERCHANTABILITY AND FITNESS WHAT-SO-EVER. No verbal agreements can be applied to the sale of this product.

Basic Information

Category: cruiser

Sub Category: Express

Model Year: 1998

Year Built: 1998

Country: United States

Dimensions

LOA: 33' 6" (10.21mm)

Beam: 11.41

Max Draft: 2' 9" (0.84mm)

Hull and Deck Information

Hull Material: Fiberglass

Engine Information

Engines: 2

Manufacturer: Mercruiser

Engine Type: Inboard

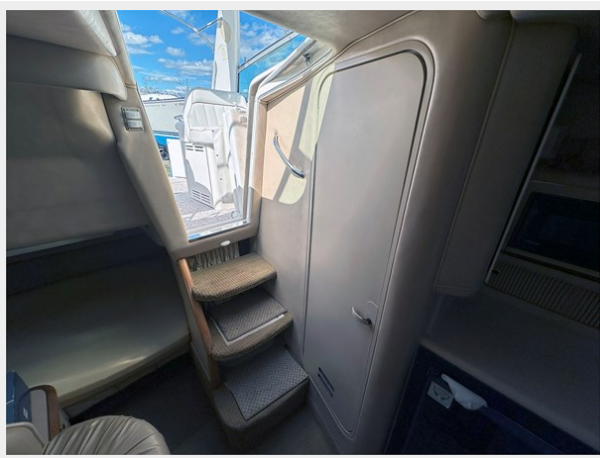
Fuel Type: Gas

PHOTOS

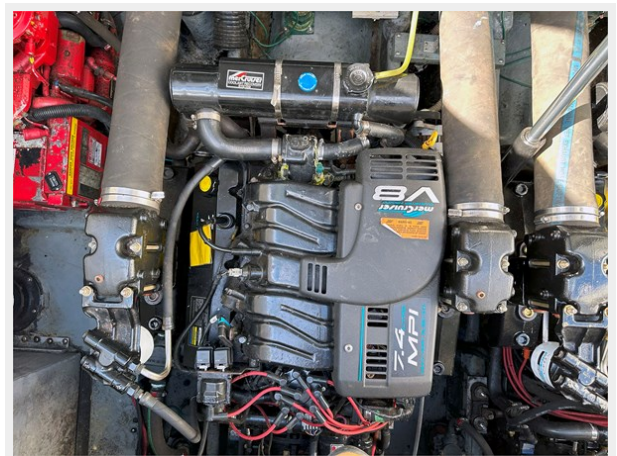
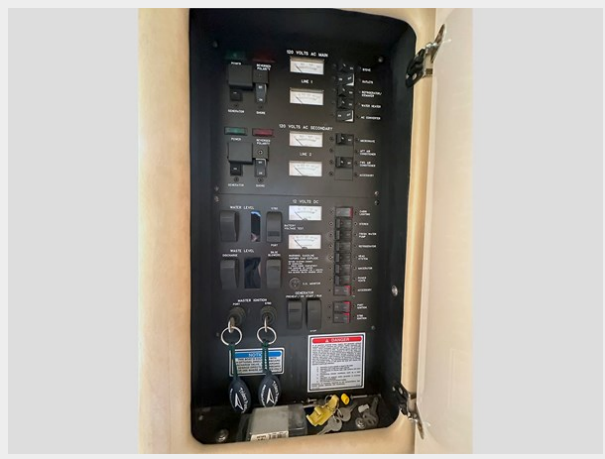


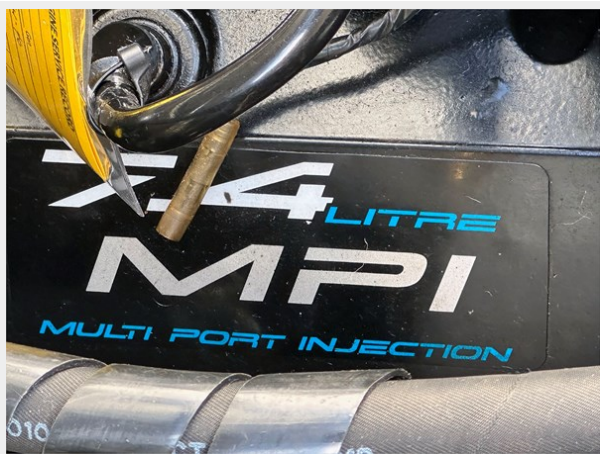
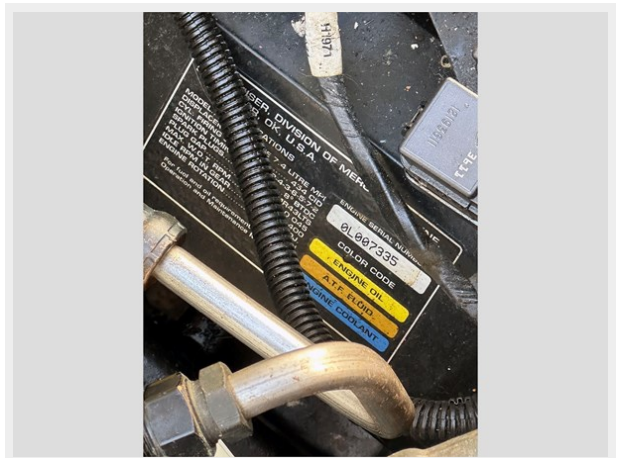












CONTACTS

Andrey Shestakov, leading yacht broker of the sales department of Shestakov Yacht Sales Inc. Shestakov Yacht Sales Inc., the official representative of the Miami/Fort Lauderdale FL headquarters.

Contact details

Email: **andrey@shestakovyachtsales.com**

Web: shestakovyachtsales.com/en/

Telephones

USA: **+1(954)274-4435**

Office hours

Monday – Saturday: **9:00 - 21:00** EDT

Sunday: **closed**

Address



Harbour Towne Marina, 850 NE 3rd St, STE 213, Dania, FL 33004