

SEA MYTH — SEA RAY



Builder: SEA RAY

Year Built: 1989

Model: cruiser

Price: Price on Application

Location: United States

LOA: 30' (9.14mm)

Beam: 11

Max Draft: 2' 4" (0.71mm)

Our experienced yacht broker, Andrey Shestakov, will help you choose and buy a yacht that best suits your needs **Sea Myth — SEA RAY** from **our catalogue**. Presently, at **Shestakov Yacht Sales Inc.**, we have a wide variety of yachts available on **our sale's list**. We also work in close contact with all the big **yacht manufacturers** from all over the world.

If you would like to buy a yacht **Sea Myth — SEA RAY** or would like help answering any questions concerning purchasing, selling or chartering a yacht, please call **+1(954)274-4435**

TABLE OF CONTENTS

TABLE OF CONTENTS	2
SPECIFICATIONS	3
Overview	3
Basic Information	4
Dimensions	4
Speed, Capacities and Weight	4
Hull and Deck Information	4
Engine Information	4
PHOTOS	5
CONTACTS	10
Contact details	10
Telephones	10
Office hours	10
Address	10

SPECIFICATIONS

Overview

Repossession General Description

The first of several 300 Sundancer models to follow in later years, this was a pioneer boat for Sea Ray in the 1980's, a leading-edge design in her day that helped define the modern-day concept of Sea Ray's hugely popular Sundancer series. A good selling model (she was once the biggest boat in the Sea Ray fleet), the 300 Sundancer rides on a solid fiberglass deep-V hull, and her wide 11-foot beam results in a fairly spacious interior with berths for four adults and two kids. The floorplan is arranged with double berths fore and aft, and privacy curtains separate the fore and aft sleeping areas from the main cabin. An enclosed head includes a sink and shower, and two hanging lockers offer adequate storage. Overall, the early-grandmother decor is definitely a look into the past. Topside, the cockpit is dominated by an elevated double helm seat that contains a flip-down, aft-facing jump seat in addition to a built-in refreshment center. There are storage pockets under the gunnels, and a transom door was standard. Additional features include a radar arch, teak bow pulpit, and a swim platform. The Sundancer will cruise in the mid 20s with twin 260hp sterndrives (35+ knots top).

Actual Condition

The vessel looks to be in good shape for this year and condition overall. We've found that there is a 3" puncher on the dashboard but looks to be a minor fix. The interior is fair. May need a good cleaning, some upholstery work and updating. The outside of the vessel is clean, recommend some new paint and a buff. Engines are functional and have been prepared for the New England weather. Send in your offers!!

Equipment

A trailer is not included in this sale.

Nationwide transportation is available through . Custom Cradles and shipment to port for overseas transport also supplied.

All products be they owned or brokered by Certified Sales, Inc., CS Auto & RV, or its associates, are sold AS-IS, WHERE-IS, NO WARRANTY OR GUARANTEE EXPRESSED OR IMPLIED. NO WARRANTIES OF MERCHANTABILITY AND FITNESS WHAT-SO-EVER. No verbal agreements can be applied to the sale of this product.

Basic Information

Category: cruiser

Sub Category: Express

Model Year: 1989

Year Built: 1989

Country: United States

Dimensions

LOA: 30' (9.14mm)

Beam: 11

Max Draft: 2' 4" (0.71mm)

Speed, Capacities and Weight

Water Capacity: 40 Gallons

Fuel Capacity: 140 Gal Gallons

Hull and Deck Information

Hull Material: Fiberglass

Engine Information

Engines: 2

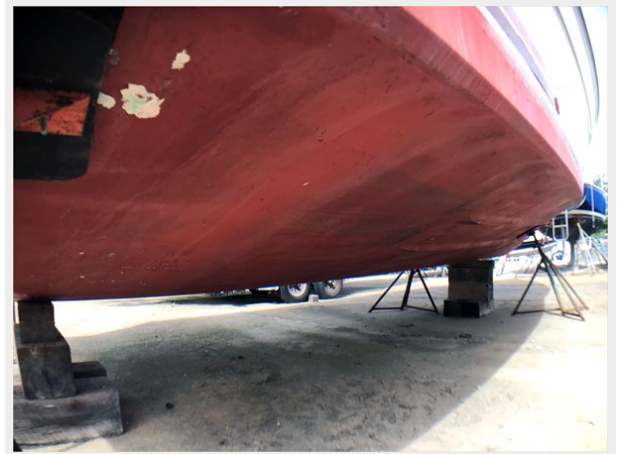
Manufacturer: Mercruiser

Engine Type: I/O

Fuel Type: Gas

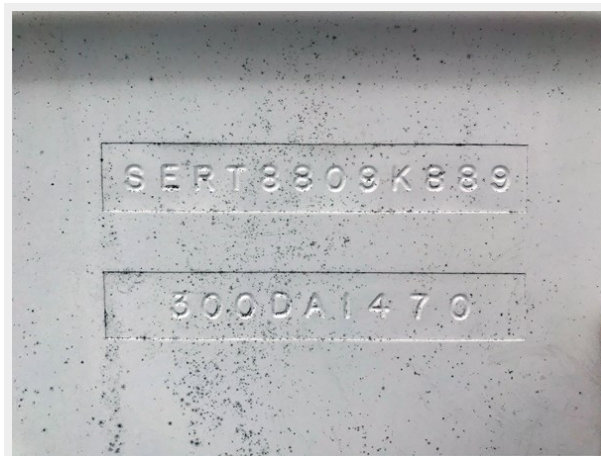
PHOTOS











CONTACTS

Andrey Shestakov, leading yacht broker of the sales department of Shestakov Yacht Sales Inc. Shestakov Yacht Sales Inc., the official representative of the Miami/Fort Lauderdale FL headquarters.

Contact details

Email: **andrey@shestakovyachtsales.com**

Web: shestakovyachtsales.com/en/

Telephones

USA: **+1(954)274-4435**

Office hours

Monday – Saturday: **9:00 - 21:00** EDT

Sunday: **closed**

Address



Harbour Towne Marina, 850 NE 3rd St, STE 213, Dania, FL 33004