

# 1989 TERRY JASON LOBSTER BOAT — TERRY JASON



**Builder:** TERRY JASON

**LOA:** 25' (7.62mm)

**Year Built:** 1989

**Beam:** 10.16

**Model:** Lobster Boat

**Max Draft:** 3' (0.91mm)

**Price:** Price on Application

**Location:** United States

Our experienced yacht broker, Andrey Shestakov, will help you choose and buy a yacht that best suits your needs **1989 Terry Jason Lobster Boat — TERRY JASON** from **our catalogue**. Presently, at **Shestakov Yacht Sales Inc.**, we have a wide variety of yachts available on **our sale's list**. We also work in close contact with all the big **yacht manufacturers** from all over the world.

If you would like to buy a yacht **1989 Terry Jason Lobster Boat — TERRY JASON** or would like help answering any questions concerning purchasing, selling or chartering a yacht, please call **+1(954)274-4435**

---

# TABLE OF CONTENTS

---

TABLE OF CONTENTS	2
SPECIFICATIONS	3
Overview	3
Basic Information	3
Dimensions	3
Speed, Capacities and Weight	4
Hull and Deck Information	4
Engine Information	4
PHOTOS	5
CONTACTS	10
Contact details	10
Telephones	10
Office hours	10
Address	10

---

# SPECIFICATIONS

---

## Overview

---

### Insurance Salvage Actual Condition

Step aboard your next adventure with this 25' T. Jason 1989! While it's seen better days, this vessel presents an exciting opportunity for restoration enthusiasts. Following an unexpected incident at the dock, it's ready for a new chapter in its journey. Despite some fiberglass damage on the bow's starboard, attributed in part to tidal influence and dock contact, this vessel's potential shines through. While it may require a thorough review and potential system replacements, it serves as a solid foundation for those eager to revive a small lobster boat to its former splendor. Don't miss your chance to breathe new life into this vessel - submit your best offer today and embark on a rewarding project!

### Equipment

A trailer is not included in this sale.

Nationwide transportation is available through . Custom Cradles and shipment to port for overseas transport also supplied.

All products be they owned or brokered by Certified Sales, Inc., CS Auto & RV, or its associates, are sold AS-IS, WHERE-IS, NO WARRANTY OR GUARANTEE EXPRESSED OR IMPLIED. NO WARRANTIES OF MERCHANTABILITY AND FITNESS WHAT-SO-EVER. No verbal agreements can be applied to the sale of this product.

---

## Basic Information

---

**Category:** Lobster Boat

**Sub Category:** Lobster Boat

**Model Year:** 1989

**Year Built:** 1989

**Country:** United States

---

## Dimensions

---

**LOA:** 25' (7.62mm)

**Beam:** 10.16

**Max Draft:** 3' (0.91mm)

---

## Speed, Capacities and Weight

---

**Fuel Capacity:** 84 Gal Gallons

---

## Hull and Deck Information

---

**Hull Material:** Fiberglass

---

## Engine Information

---

**Engines:** 1

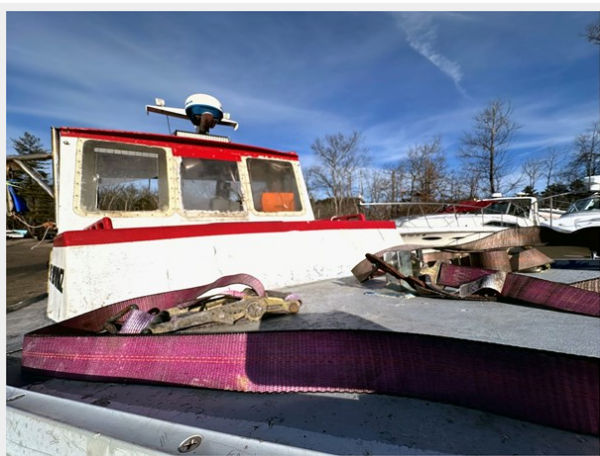
**Manufacturer:** Volvo Penta

**Engine Type:** Inboard

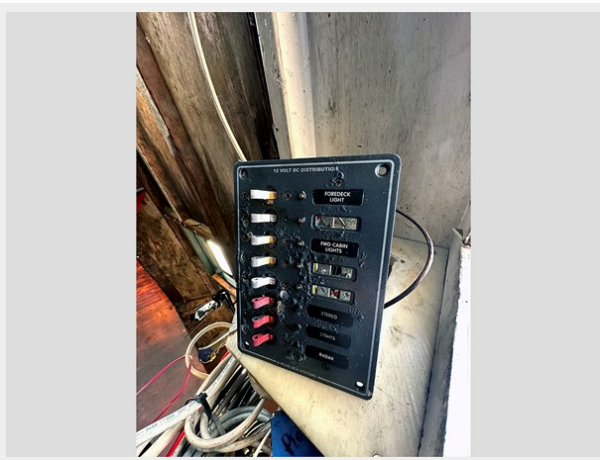
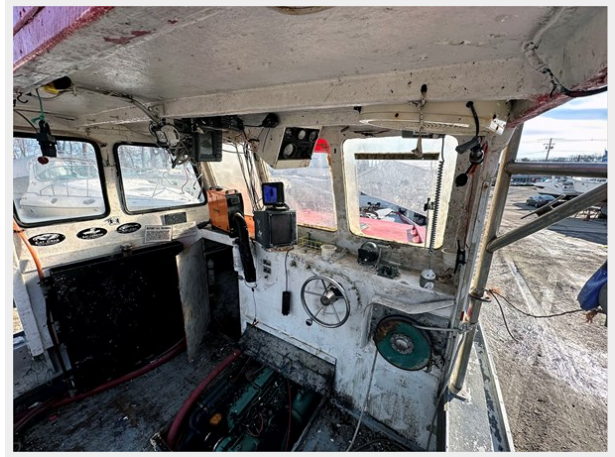
**Fuel Type:** Diesel

# PHOTOS

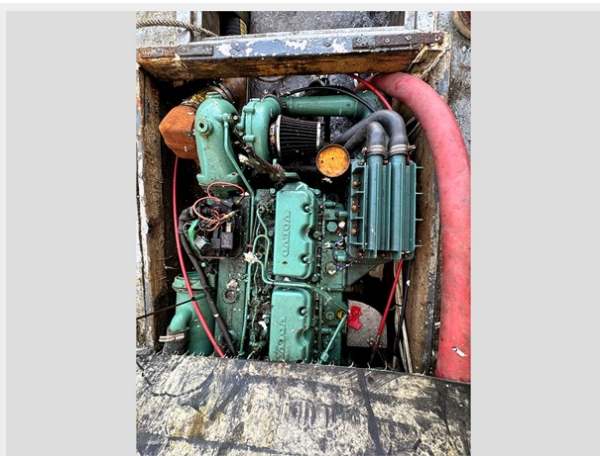












# CONTACTS

---

Andrey Shestakov, leading yacht broker of the sales department of Shestakov Yacht Sales Inc. Shestakov Yacht Sales Inc., the official representative of the Miami/Fort Lauderdale FL headquarters.

## Contact details

---

Email: **andrey@shestakovyachtsales.com**

Web: [shestakovyachtsales.com/en/](https://shestakovyachtsales.com/en/)

## Telephones

---

USA: **+1(954)274-4435**

## Office hours

---

Monday – Saturday: **9:00 - 21:00** EDT

Sunday: **closed**

## Address

---



Harbour Towne Marina, 850 NE 3rd St, STE 213, Dania, FL 33004