

JOINT VENTURE — TOPAZ



Builder: TOPAZ

Year Built: 1986

Model: Sport Fisherman

Price: Price on Application

Location: United States

LOA: 29' (8.84mm)

Beam: 10.25

Max Draft: 2' 6" (0.74mm)

Our experienced yacht broker, Andrey Shestakov, will help you choose and buy a yacht that best suits your needs **Joint Venture — TOPAZ** from **our catalogue**. Presently, at **Shestakov Yacht Sales Inc.**, we have a wide variety of yachts available on **our sale's list**. We also work in close contact with all the big **yacht manufacturers** from all over the world.

If you would like to buy a yacht **Joint Venture — TOPAZ** or would like help answering any questions concerning purchasing, selling or chartering a yacht, please call **+1(954)274-4435**

TABLE OF CONTENTS

TABLE OF CONTENTS	2
SPECIFICATIONS	3
Overview	3
Basic Information	3
Dimensions	4
Hull and Deck Information	4
Engine Information	4
PHOTOS	5
CONTACTS	12
Contact details	12
Telephones	12
Office hours	12
Address	12

SPECIFICATIONS

Overview

Donation Actual Condition

This generously donated boat, previously owned by a diesel mechanic teacher from a community college, has been well-maintained and boasts accurate meter hours. The vessel has undergone winterization (2022) and replacement of the fuel delivery system and tower cables for enhanced reliability. Please note that the boat more recently collected rainwater due to having no drain plug, which has since been temporarily rectified by drilling a hole in the stern. Additionally, the port engine requires an impeller, the starboard engine needs a new starter wired in, and all systems may need attention, replacement, or repair due to the water intrusion. The generator has never been used and prior to the water intrusion was suspected to be in functional condition. The tower has been modified (removed) for transportation purposes. This vessel presents a project opportunity that requires some attention prior to use, however it holds great potential for an individual who possesses resourcefulness and proficiency in boat maintenance. Send in your best offer!

Equipment

A trailer is not included in this sale.

Nationwide transportation is available through . Custom Cradles and shipment to port for overseas transport also supplied.

All products be they owned or brokered by Certified Sales, Inc., CS Auto & RV, or its associates, are sold AS-IS, WHERE-IS, NO WARRANTY OR GUARANTEE EXPRESSED OR IMPLIED. NO WARRANTIES OF MERCHANTABILITY AND FITNESS WHAT-SO-EVER. No verbal agreements can be applied to the sale of this product.

Basic Information

Category: Sport Fisherman

Model Year: 1986

Year Built: 1986

Country: United States

Dimensions

LOA: 29' (8.84mm)

Beam: 10.25

Max Draft: 2' 6" (0.74mm)

Hull and Deck Information

Hull Material: Fiberglass

Engine Information

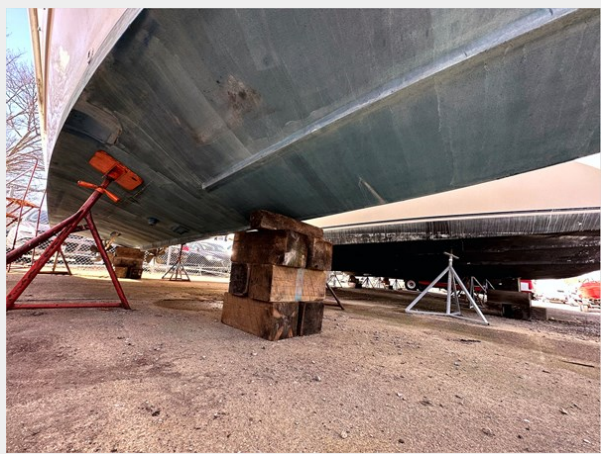
Engines: 2

Manufacturer: Volvo Penta

Engine Type: Inboard

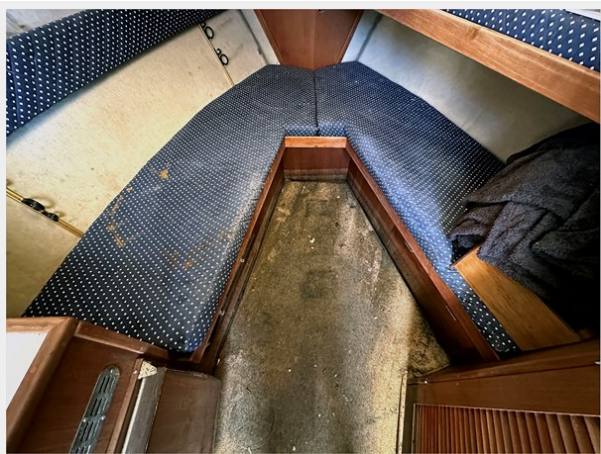
Fuel Type: Diesel

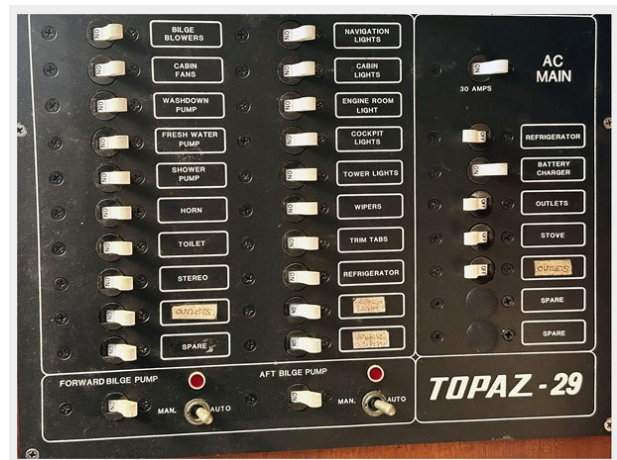
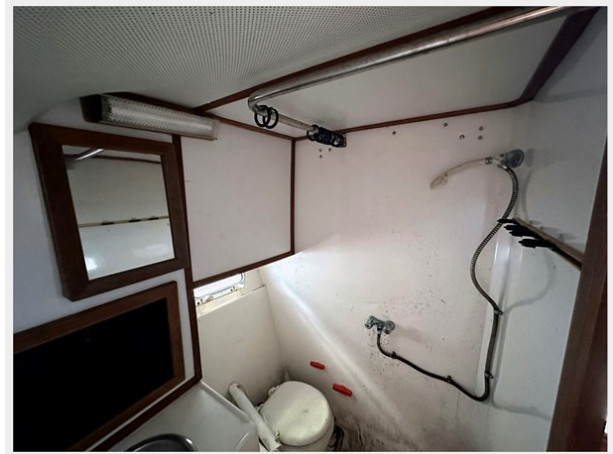
PHOTOS

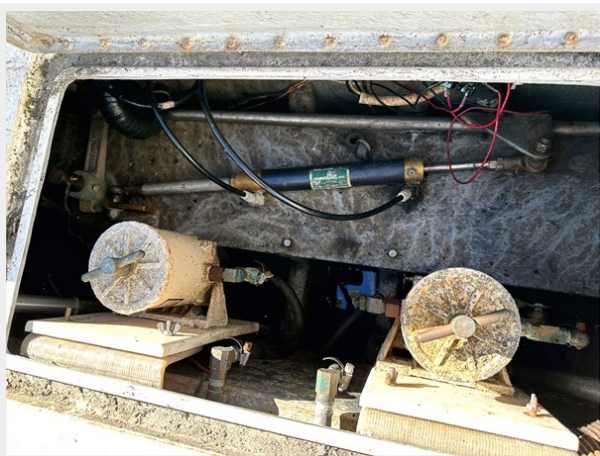
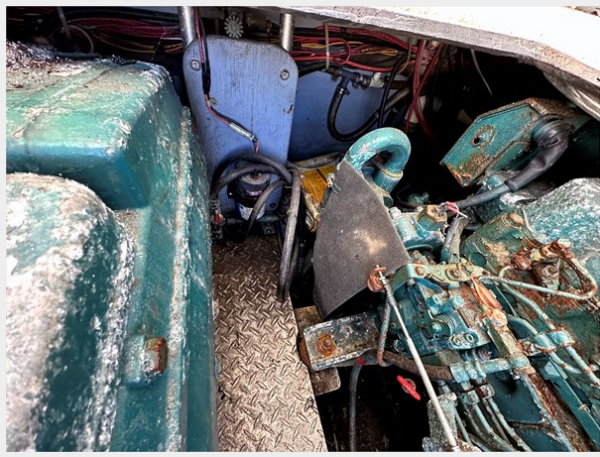














CONTACTS

Andrey Shestakov, leading yacht broker of the sales department of Shestakov Yacht Sales Inc. Shestakov Yacht Sales Inc., the official representative of the Miami/Fort Lauderdale FL headquarters.

Contact details

Email: **andrey@shestakovyachtsales.com**

Web: shestakovyachtsales.com/en/

Telephones

USA: **+1(954)274-4435**

Office hours

Monday – Saturday: **9:00 - 21:00** EDT

Sunday: **closed**

Address



Harbour Towne Marina, 850 NE 3rd St, STE 213, Dania, FL 33004