

TARA — LUDERS



Builder: LUDERS

Year Built: 1965

Model: Cruising or Racing Sailboat

Price: Price on Application

Location: United States

LOA: 53' 9" (16.38mm)

Beam: 13.83

Max Draft: 7' 9" (2.36mm)

Our experienced yacht broker, Andrey Shestakov, will help you choose and buy a yacht that best suits your needs **Tara — LUDERS** from **our catalogue**. Presently, at **Shestakov Yacht Sales Inc.**, we have a wide variety of yachts available on **our sale's list**. We also work in close contact with all the big **yacht manufacturers** from all over the world.

If you would like to buy a yacht **Tara — LUDERS** or would like help answering any questions concerning purchasing, selling or chartering a yacht, please call **+1(954)274-4435**

TABLE OF CONTENTS

TABLE OF CONTENTS	2
SPECIFICATIONS	3
Overview	3
Basic Information	3
Dimensions	4
Speed, Capacities and Weight	4
Hull and Deck Information	4
Engine Information	4
PHOTOS	5
CONTACTS	7
Contact details	7
Telephones	7
Office hours	7
Address	7

SPECIFICATIONS

Overview

Brokerage General Description

Every once in a while a very special yacht listing comes available. Tara is just one of those rare occasions. She was built as a custom racer for John "Don" McNamara and designed by Bill Luders. Don McNamara was a bronze Olympian in 5.5 meters, co-captained the 12 meter "Nefertitti", and campaigned "Tara" in the SORC. He knew what he wanted in a racing boat. "Tara" is a beautiful example of the CCA rule of the sixties and still sailing and breaking hearts today. Comfortable on the race course, but also a comfortable cruising boat, An adaptive yawl rig makes her capable of easy handling with a shorthanded crew.

Actual Condition

Sail inventory and rig New 13oz 105% Jib New 10oz 150% Jib New 8 oz 1705 jib Main older heavy double stitched still strong Head stay and back stay replaced 1994 Overall Strong and fast "Tara" is equipped with self-tailing winches, coffee grinder, new sails, and many ongoing upgrades. She will be in need of a paint job soon, but still handsome and ready to sail. The 54' Luders is about 17' overall height. It can not be transported over roads. It can be launched at the Mattapoissett waterfront at a high tide only. More photos to follow...

Equipment

A trailer is not included in this sale.

Trailers are available through our Mendon, MA office.

All products be they owned or brokered by Certified Sales, Inc., CS Auto & RV, or its associates, are sold AS-IS, WHERE-IS, NO WARRANTY OR GUARANTEE EXPRESSED OR IMPLIED. NO WARRANTIES OF MERCHANTABILITY AND FITNESS WHAT-SO-EVER. No verbal agreements can be applied to the sale of this product.

Basic Information

Category: Cruising or Racing Sailboat **Model Year:** 1965

Year Built: 1965

Country: United States

Dimensions

LOA: 53' 9" (16.38mm)

Beam: 13.83

Max Draft: 7' 9" (2.36mm)

Speed, Capacities and Weight

Water Capacity: 100 Gallons

Holding Tank: 20 Gal Gallons

Fuel Capacity: 125 Gal Gallons

Hull and Deck Information

Hull Material: Aluminum

Engine Information

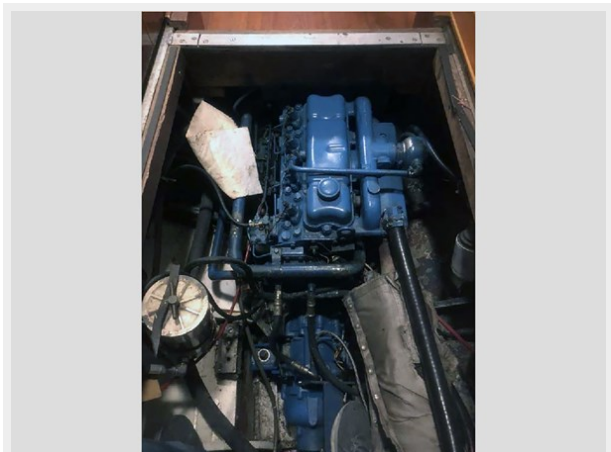
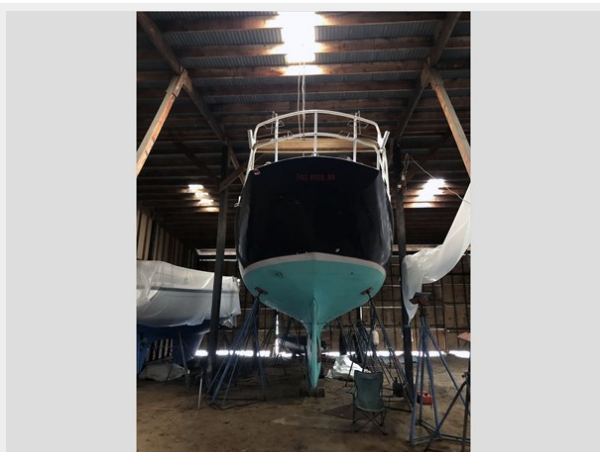
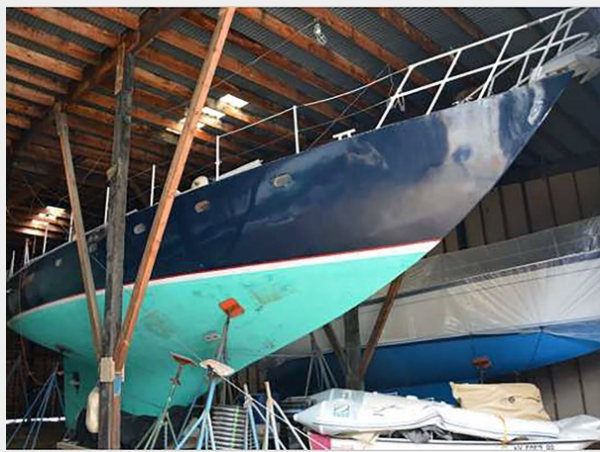
Engines: 1

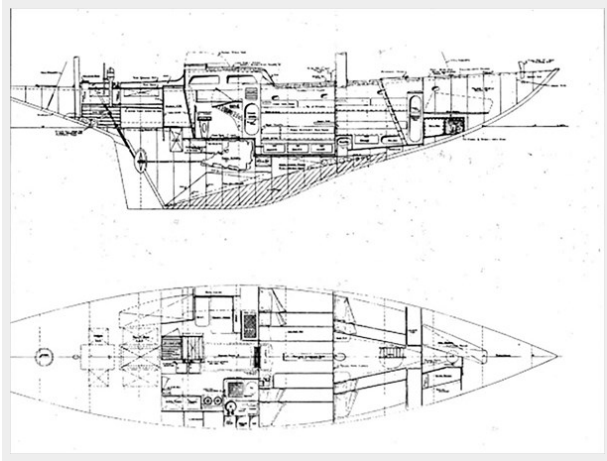
Manufacturer: Motoren Werk Manheim
(MWM)

Engine Type: Inboard

Fuel Type: Diesel

PHOTOS





CONTACTS

Andrey Shestakov, leading yacht broker of the sales department of Shestakov Yacht Sales Inc. Shestakov Yacht Sales Inc., the official representative of the Miami/Fort Lauderdale FL headquarters.

Contact details

Email: **andrey@shestakovyachtsales.com**

Web: shestakovyachtsales.com/en/

Telephones

USA: **+1(954)274-4435**

Office hours

Monday – Saturday: **9:00 - 21:00** EDT

Sunday: **closed**

Address



Harbour Towne Marina, 850 NE 3rd St, STE 213, Dania, FL 33004