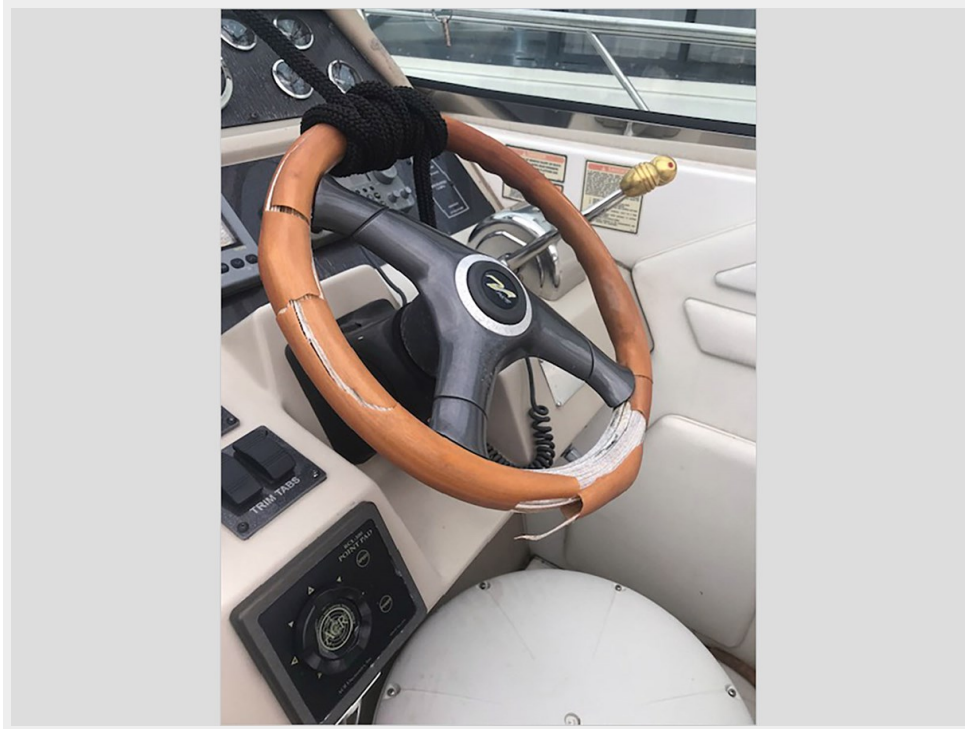


# 1999 SEA RAY 400 EXPRESS — SEA RAY



**Builder:** [SEA RAY](#)

**Year Built:** 1999

**Model:** cruiser

**Price:** \$8,000 USD

**Location:** United States

**LOA:** 40' (12.19mm)

**Beam:** 13

**Max Draft:** 3' 6" (1.07mm)

Our experienced yacht broker, Andrey Shestakov, will help you choose and buy a yacht that best suits your needs **1999 Sea Ray 400 Express — SEA RAY** from our catalogue. Presently, at **Shestakov Yacht Sales Inc.**, we have a wide variety of yachts available on our sale's list. We also work in close contact with all the big **yacht manufacturers** from all over the world.

If you would like to buy a yacht **1999 Sea Ray 400 Express — SEA RAY** or would like help answering any questions concerning purchasing, selling or chartering a yacht, please call **+1(954)274-4435**

---

# TABLE OF CONTENTS

---

TABLE OF CONTENTS	2
SPECIFICATIONS	3
Overview	3
Basic Information	3
Dimensions	3
Hull and Deck Information	4
Engine Information	4
PHOTOS	5
CONTACTS	8
Contact details	8
Telephones	8
Office hours	8
Address	8

---

# SPECIFICATIONS

---

## Overview

---

Brokerage - Actual Condition

This vessel is a project. It is suffering from extensive neglect. It has been on land for years and the engines have not been run in 3 years.

The hull is reported to be solid. Everything else will need service and repairs.

This is a lot of boat and could be a good opportunity for the right buyer. This boat must sell. Take a look and make your offers.

Equipment

A trailer is not included in this sale.

Nationwide transportation is available through . Custom Cradles and shipment to port for overseas transport also supplied.

All products be they owned or brokered by Certified Sales, Inc., CS Auto & RV, or its associates, are sold AS-IS, WHERE-IS, NO WARRANTY OR GUARANTEE EXPRESSED OR IMPLIED. NO WARRANTIES OF MERCHANTABILITY AND FITNESS WHAT-SO-EVER. No verbal agreements can be applied to the sale of this product.

---

## Basic Information

---

**Category:** cruiser

**Sub Category:** Express

**Model Year:** 1999

**Year Built:** 1999

**Country:** United States

---

## Dimensions

---

**LOA:** 40' (12.19mm)

**Beam:** 13

**Max Draft:** 3' 6" (1.07mm)

---

## Hull and Deck Information

---

**Hull Material:** Fiberglass

---

## Engine Information

---

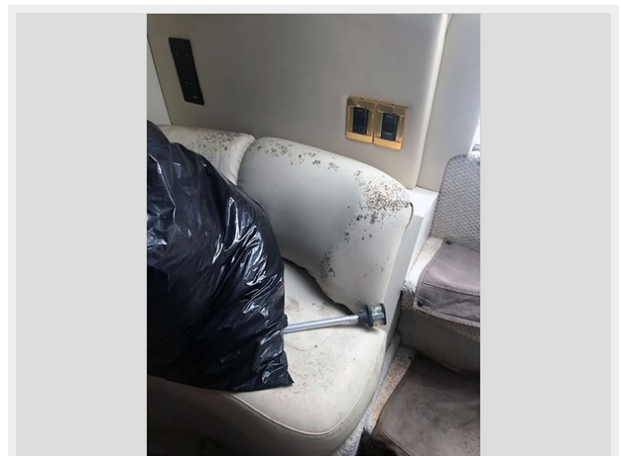
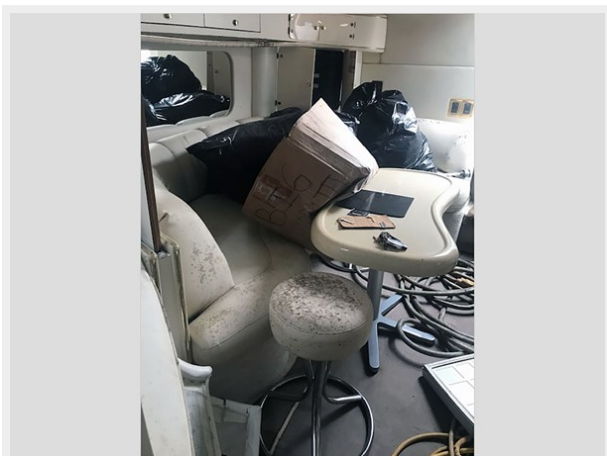
**Engines:** 2

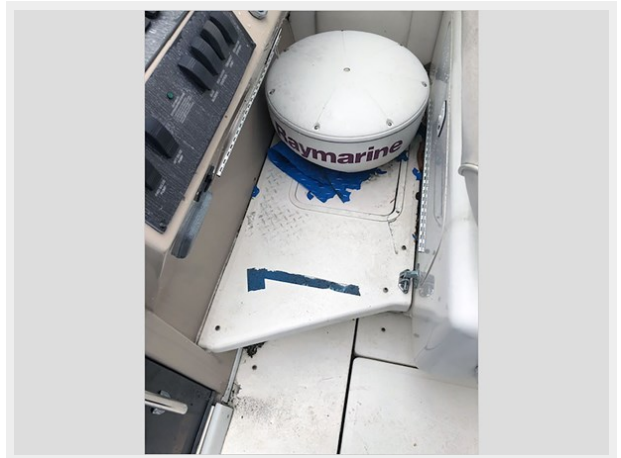
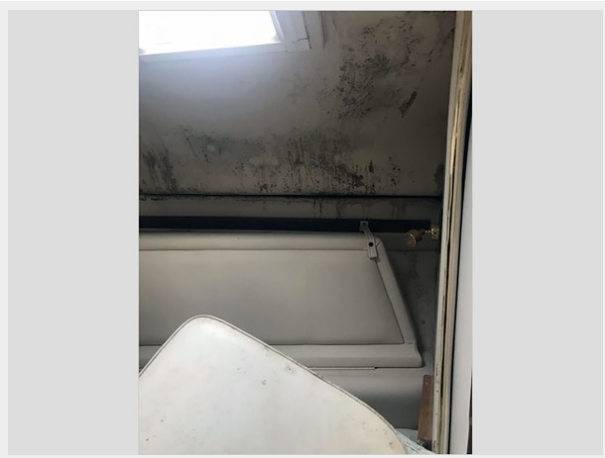
**Manufacturer:** Mercruiser

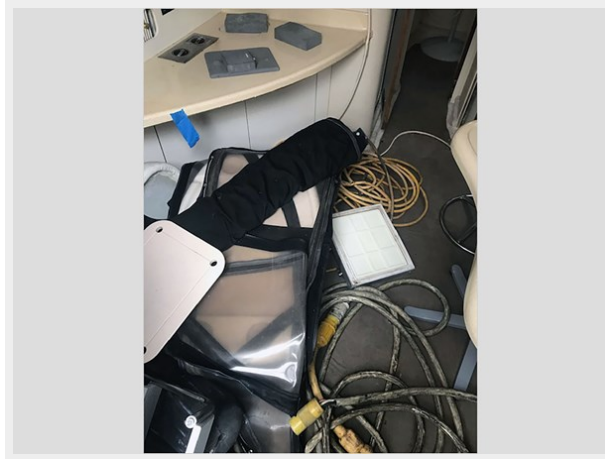
**Engine Type:** I/O

**Fuel Type:** Gas

# PHOTOS







# CONTACTS

---

Andrey Shestakov, leading yacht broker of the sales department of Shestakov Yacht Sales Inc. Shestakov Yacht Sales Inc., the official representative of the Miami/Fort Lauderdale FL headquarters.

## Contact details

---

Email: **andrey@shestakovyachtsales.com**

Web: [shestakovyachtsales.com/en/](http://shestakovyachtsales.com/en/)

## Telephones

---

USA: **+1(954)274-4435**

## Office hours

---

Monday – Saturday: **9:00 - 21:00** EDT

Sunday: **closed**

## Address

---



Harbour Towne Marina, 850 NE 3rd St, STE 213, Dania, FL 33004