

## 2005 CHAPPARRAL 290 — MARINE PROJECTS



**Builder:** MARINE PROJECTS

**Year Built:** 2005

**Model:** cruiser

**Price:** \$79,500 USD

**Location:** United States

**LOA:** 30' 9" (9.35mm)

**Beam:** 10.17

**Min Draft:** 1' 9" (0.53mm)

**Max Draft:** 2' 10" (0.86mm)

**Cruise Speed:** 23 Knots Kts. (26 MPH)

**Max Speed:** 32 Knots Kts. (37 MPH)

Our experienced yacht broker, Andrey Shestakov, will help you choose and buy a yacht that best suits your needs **2005 CHAPPARRAL 290 — MARINE PROJECTS** from **our catalogue**. Presently, at **Shestakov Yacht Sales Inc.**, we have a wide variety of yachts available on **our sale's list**. We also work in close contact with all the big **yacht manufacturers** from all over the world.

If you would like to buy a yacht **2005 CHAPPARRAL 290 — MARINE PROJECTS** or would like help answering any questions concerning purchasing, selling or chartering a yacht, please call **+1(954)274-4435**

# TABLE OF CONTENTS

---

TABLE OF CONTENTS	2
SPECIFICATIONS	4
Overview	4
Basic Information	4
Dimensions	4
Speed, Capacities and Weight	5
Accommodations	5
Hull and Deck Information	5
Engine Information	5
PHOTOS	6
20220531_141431_resized	6
20220531_141450_resized (1)	6
20220531_141507_resized (1)	6
20220531_141518_resized (2)	6
IMG_8221	7
IMG_8224	7
IMG_8225	7
IMG_8226	7
IMG_8227	8
IMG_8228	8
IMG_8229	8
IMG_8230	8
IMG_8231	9
IMG_8232	9
IMG_8233	9
IMG_8234	9
IMG_8235	10
IMG_8236	10

---

IMG_8238	10
IMG_8237	10
IMG_8240	11
IMG_8239	11
IMG_8242	11
IMG_8241	11
IMG_8243	12
IMG_8244	12
IMG_8245	12
IMG_8131	12
IMG_8132	13
IMG_8133	13
IMG_8134	13
IMG_8135	13
IMG_8136	14
IMG_8137	14
IMG_8138	14
IMG_8139	14
IMG_8141	15
IMG_8140	15
IMG_8142	15
IMG_8143	15
CONTACTS	16
Contact details	16
Telephones	16
Office hours	16
Address	16

---

---

# SPECIFICATIONS

---

## Overview

---

It's surprising what luxuries manufacturers can pack into a 28-foot boat. The Chaparral Signature 280 (called the Signature 290 in 2004–09) is a case in point—with high freeboard to provide standing cabin headroom, the Chaparral has a sleeping capacity of six in a floorplan that few will find cramped. With a generous 10-foot beam, Chaparral designers used the space well. The layout is similar to most boats of this type with a convertible dinette forward, U-shaped cabin dinette (also convertible), and a double berth in the aft cabin, which, incidentally, has a privacy door rather than just a curtain. Galley storage is very good due to the large storage locker in the galley floor, and the decor is a blend of cherry joinery, designer fabrics, and vinyl wall coverings. Note that the cabin entryway is very narrow. The cockpit has wraparound seating aft, built-in entertainment center, and a spacious storage locker under the portside passenger seat. Additional features include a transom storage locker, walk-through windshield, and an extended swim platform. Twin 4.3L MerCruisers deliver a top speed of 34–35 knots.

## Basic Information

---

**Category:** cruiser

**Sub Category:** Express

**Model Year:** 2005

**Year Built:** 2005

**Country:** United States

## Dimensions

---

**LOA:** 30' 9" (9.35mm)

**Beam:** 10.17

**Min Draft:** 1' 9" (0.53mm)

**Max Draft:** 2' 10" (0.86mm)

---

## Speed, Capacities and Weight

---

**Cruise Speed:** 23 Knots Kts. (26 MPH) **Cruise Speed Range:** 200

**Max Speed:** 32 Knots Kts. (37 MPH) **Max Speed Range:** 150 Kts.

**Gross Tonnage:** 9 Pounds **Water Capacity:** 25 Gallons

**Holding Tank:** 28 Gal Gallons **Fuel Capacity:** 113 Gal Gallons

---

## Accommodations

---

**Total Cabins:** 1

**Total Berths:** 4

**Sleeps:** 4

**Total Heads:** 1

---

## Hull and Deck Information

---

**Hull Material:** Fiberglass

**Deck Material:** Fiberglass

**Hull Configuration:** Monohull

**Hull Designer:** Chaparral

**Interior Designer:** Chaparral

---

## Engine Information

---

**Engines:** 2

**Manufacturer:** Volvo Penta

**Engine Type:** I/O

**Fuel Type:** Gas

# PHOTOS

**20220531\_141431\_resized**



**20220531\_141450\_resized (1)**



**20220531\_141507\_resized (1)**



**20220531\_141518\_resized (2)**





**IMG\_8221**



**IMG\_8224**



**IMG\_8225**



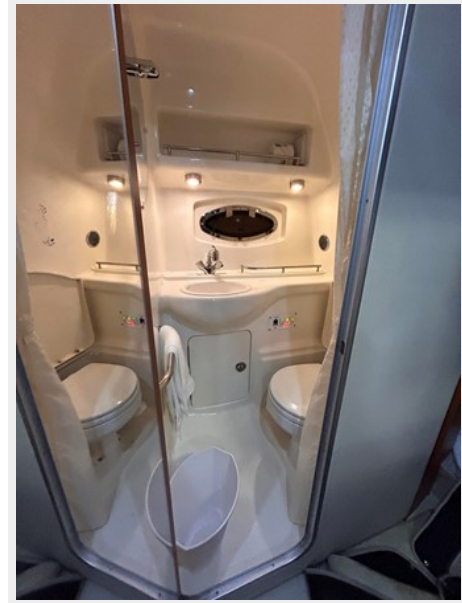
**IMG\_8226**



**IMG\_8227**



**IMG\_8228**



**IMG\_8229**



**IMG\_8230**





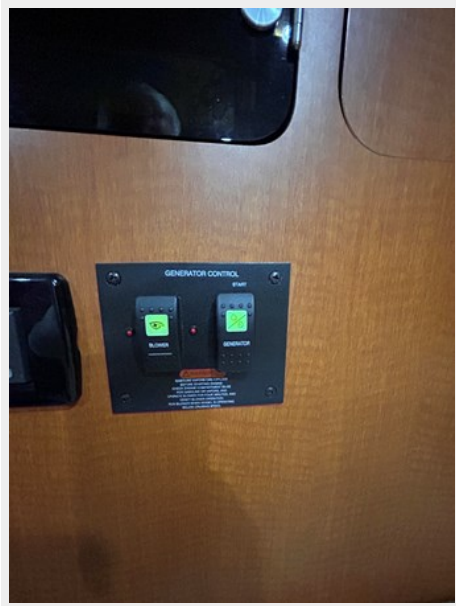
**IMG\_8231**



**IMG\_8232**



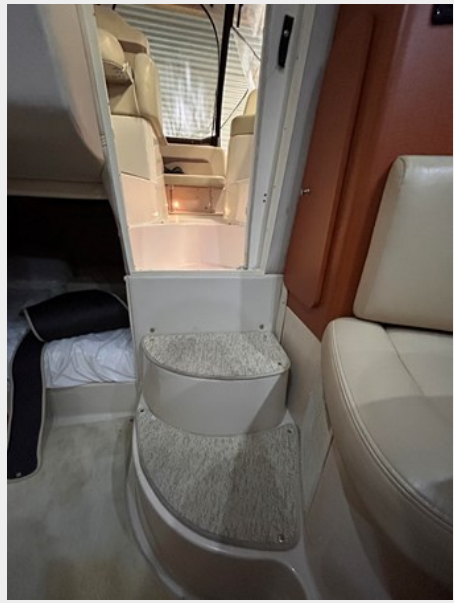
**IMG\_8233**



**IMG\_8234**



**IMG\_8235**



**IMG\_8236**



**IMG\_8238**



**IMG\_8237**



IMG\_8239



IMG\_8240



IMG\_8241



IMG\_8242





**IMG\_8243**



**IMG\_8244**



**IMG\_8245**



**IMG\_8131**



**IMG\_8132**



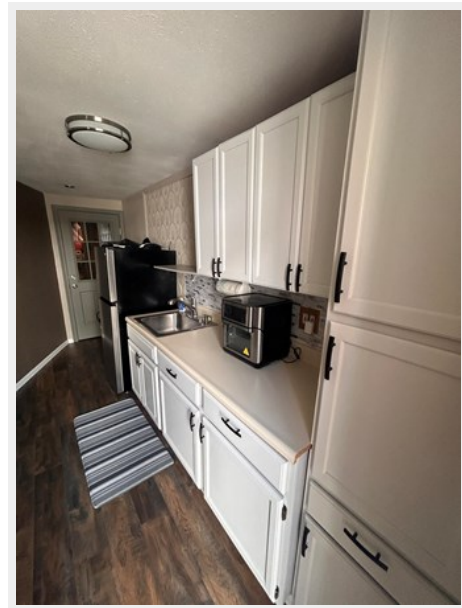
**IMG\_8133**



**IMG\_8134**



**IMG\_8135**



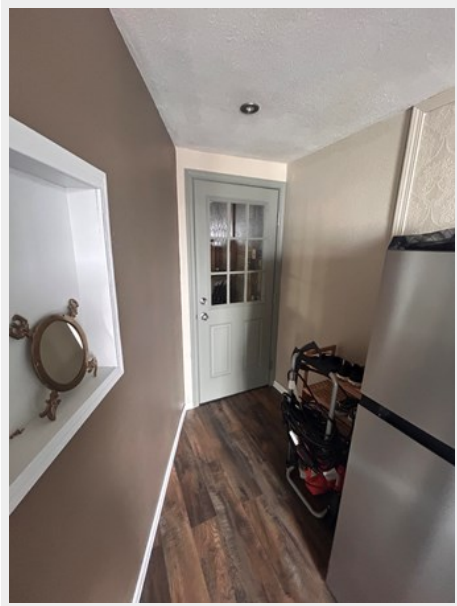
**IMG\_8136**



**IMG\_8137**



**IMG\_8138**



**IMG\_8139**

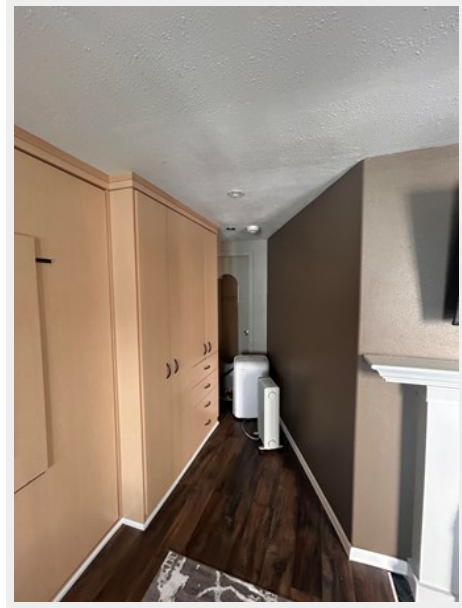




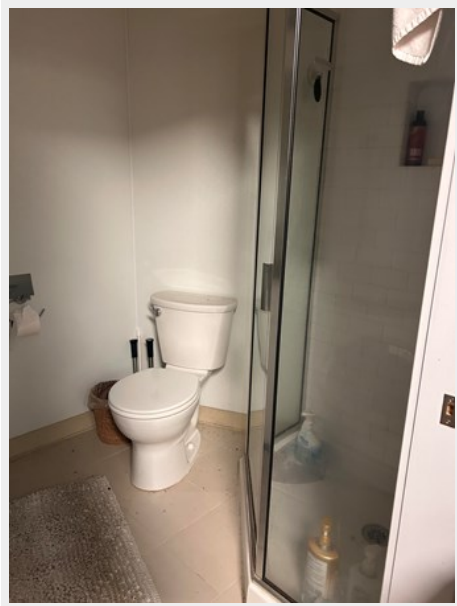
**IMG\_8140**



**IMG\_8141**



**IMG\_8142**



**IMG\_8143**



# CONTACTS

---

Andrey Shestakov, leading yacht broker of the sales department of Shestakov Yacht Sales Inc. Shestakov Yacht Sales Inc., the official representative of the Miami/Fort Lauderdale FL headquarters.

## Contact details

---

Email: **andrey@shestakovyachtsales.com**

Web: [shestakovyachtsales.com/en/](http://shestakovyachtsales.com/en/)

## Telephones

---

USA: **+1(954)274-4435**

## Office hours

---

Monday – Saturday: **9:00 - 21:00** EDT

Sunday: **closed**

## Address

---



Harbour Towne Marina, 850 NE 3rd St, STE 213, Dania, FL 33004