

ALLSEAS ASTERIA 142 — HEYSEA



Builder: [HEYSEA](#)

Year Built: 2025

Model: Motor Yacht

Price: Price on Application

Location: China

LOA: 142' (43.27mm)

Beam: 27.88

Max Draft: 6' 10" (2.06mm)

Cruise Speed: 10 Knots Kts. (12 MPH)

Max Speed: 17 Knots Kts. (20 MPH)

Our experienced yacht broker, Andrey Shestakov, will help you choose and buy a yacht that best suits your needs **Allseas Asteria 142 — HEYSEA** from our catalogue. Presently, at **Shestakov Yacht Sales Inc.**, we have a wide variety of yachts available on our sale's list. We also work in close contact with all the big **yacht manufacturers** from all over the world.

If you would like to buy a yacht **Allseas Asteria 142 — HEYSEA** or would like help answering any questions concerning purchasing, selling or chartering a yacht, please call **+1(954)274-4435**

TABLE OF CONTENTS

TABLE OF CONTENTS	2
SPECIFICATIONS	3
Overview	3
Basic Information	3
Dimensions	3
Speed, Capacities and Weight	3
Hull and Deck Information	3
Engine Information	4
PHOTOS	5
CONTACTS	10
Contact details	10
Telephones	10
Office hours	10
Address	10

SPECIFICATIONS

Overview

Designed by the internationally renowned Italian design VYD Studio, perfected thanks to a very close cooperation of experienced yacht owners and captains, and built by one of the fastest advancing yards in the world - Welcome to the Asteria 142.

Elegant, Unique and Timeless. The perfect balance of open deck space and unique interior, and the commitment to comfort and openness have resulted in a yacht suitable for every occasion and guaranteed to give you pleasure.

Basic Information

Category: Motor Yacht

Model Year: 2025

Year Built: 2025

Country: China

Dimensions

LOA: 142' (43.27mm)

Beam: 27.88

Max Draft: 6' 10" (2.06mm)

Speed, Capacities and Weight

Cruise Speed: 10 Knots Kts. (12 MPH) **Cruise Speed Range:** 2000

Max Speed: 17 Knots Kts. (20 MPH) **Gross Tonnage:** 457 Pounds

Water Capacity: 1321 Gallons **Fuel Capacity:** 6948 Gal Gallons

Hull and Deck Information

Hull Material: Fiberglass

Engine Information

Engines: 2

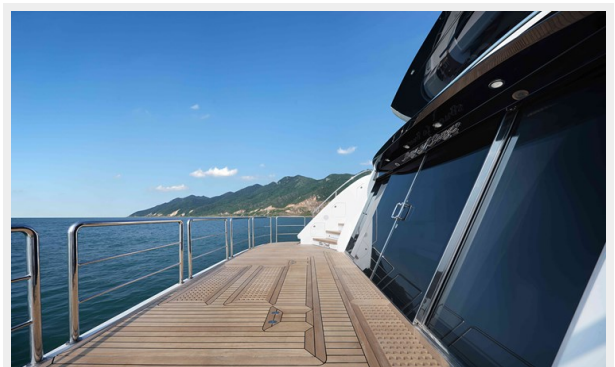
Manufacturer: Caterpillar

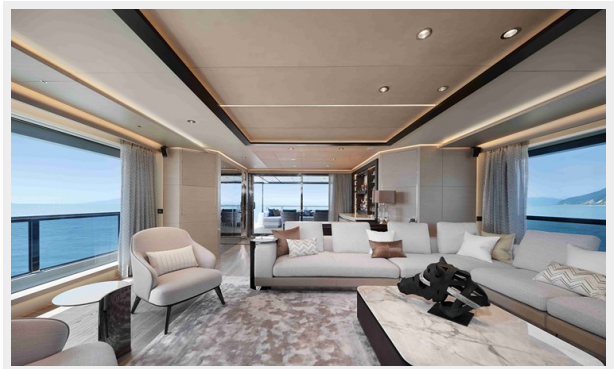
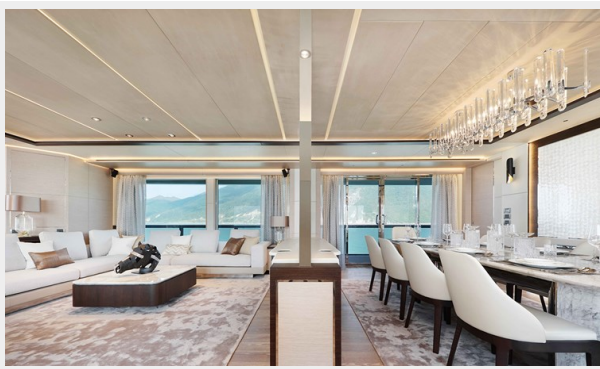
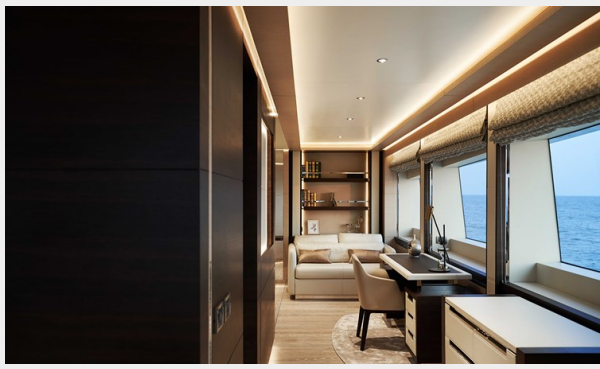
Engine Type: Inboard

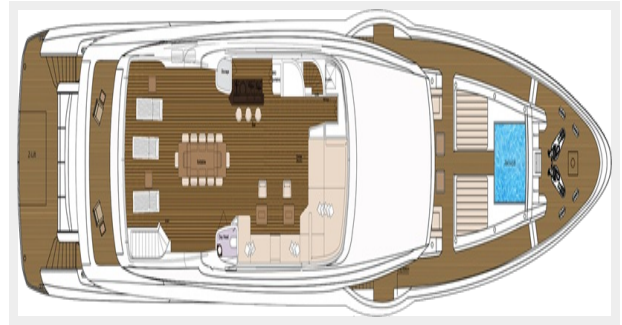
Fuel Type: Diesel

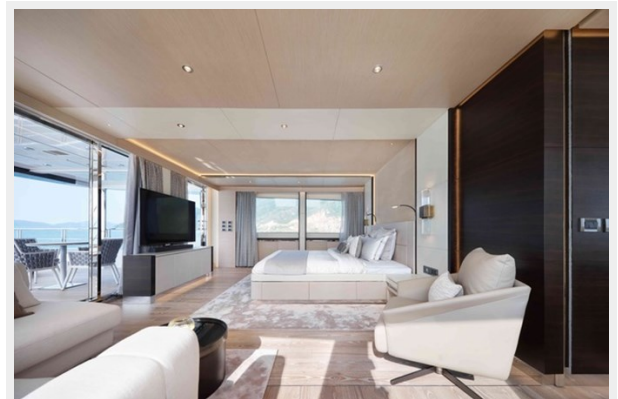
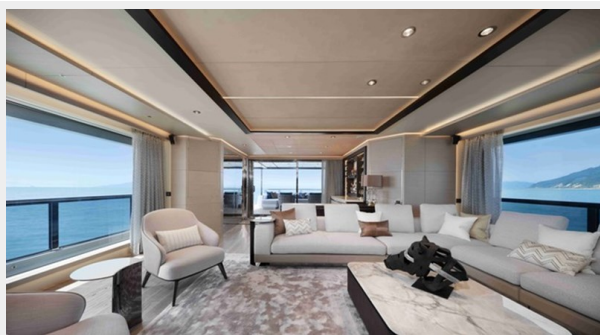
PHOTOS











CONTACTS

Andrey Shestakov, leading yacht broker of the sales department of Shestakov Yacht Sales Inc. Shestakov Yacht Sales Inc., the official representative of the Miami/Fort Lauderdale FL headquarters.

Contact details

Email: **andrey@shestakovyachtsales.com**

Web: shestakovyachtsales.com/en/

Telephones

USA: **+1(954)274-4435**

Office hours

Monday – Saturday: **9:00 - 21:00** EDT

Sunday: **closed**

Address



Harbour Towne Marina, 850 NE 3rd St, STE 213, Dania, FL 33004