

JASMINA III — ARK YACHT



Builder: [ARK YACHT](#)

Year Built: 2022

Model: Sloop

Price: €2,950,000 EUR

Location: Turkey

LOA: 100' 5" (30.6mm)

Beam: 25.26

Max Draft: 12' 2" (3.7mm)

Cruise Speed: 10 Knots Kts. (12 MPH)

Max Speed: 12 Knots Kts. (14 MPH)

Our experienced yacht broker, Andrey Shestakov, will help you choose and buy a yacht that best suits your needs **JASMINA III — ARK YACHT** from **our catalogue**. Presently, at **Shestakov Yacht Sales Inc.**, we have a wide variety of yachts available on **our sale's list**. We also work in close contact with all the big **yacht manufacturers** from all over the world.

If you would like to buy a yacht **JASMINA III — ARK YACHT** or would like help answering any questions concerning purchasing, selling or chartering a yacht, please call **+1(954)274-4435**

TABLE OF CONTENTS

| | |
|------------------------------|----|
| TABLE OF CONTENTS | 2 |
| SPECIFICATIONS | 3 |
| Overview | 3 |
| Basic Information | 3 |
| Dimensions | 3 |
| Speed, Capacities and Weight | 3 |
| Accommodations | 4 |
| Hull and Deck Information | 4 |
| Engine Information | 4 |
| PHOTOS | 5 |
| DSC01468 | 9 |
| DSC01466 | 9 |
| DSC01453 | 10 |
| CONTACTS | 11 |
| Contact details | 11 |
| Telephones | 11 |
| Office hours | 11 |
| Address | 11 |

SPECIFICATIONS

Overview

Jasmina III is a 2022 RINA-classified, 30.6-meter luxury sailing yacht built by Ark Yachts with an elegant interior by Timothy Saunders Yacht Design. Constructed with a steel hull and aluminum superstructure, this mono-hull yacht boasts a sturdy yet sophisticated design. With a beam of 7.7 meters and a maximum draft of 3.7 meters, she offers stable cruising powered by a single John Deere engine, reaching a top speed of 12 knots and an economical cruising speed of 9 knots. Accommodating up to 8 guests in 3 double and 1 twin cabin, along with a crew of 4, Jasmina III is equipped with advanced onboard systems, including hydraulic bow and stern thrusters and interconnected bilge and fire-fighting systems. Now located in Didim, Turkey, she is available for purchase at EUR 2,950,000, excluding VAT.

Basic Information

Category: Sloop

Model Year: 2022

Year Built: 2022

Country: Turkey

Dimensions

LOA: 100' 5" (30.6mm)

LWL: 91' 7" (27.9mm)

Beam: 25.26

Max Draft: 12' 2" (3.7mm)

Speed, Capacities and Weight

Cruise Speed: 10 Knots Kts. (12 MPH) **Max Speed:** 12 Knots Kts. (14 MPH)

Gross Tonnage: 170 Pounds

Water Capacity: 2900 Gallons

Fuel Capacity: 2377.55 Gal Gallons

Accommodations

Total Cabins: 4

Sleeps: 8

Crew Cabin: 4

Hull and Deck Information

Hull Material: Steel

Deck Material: Teak

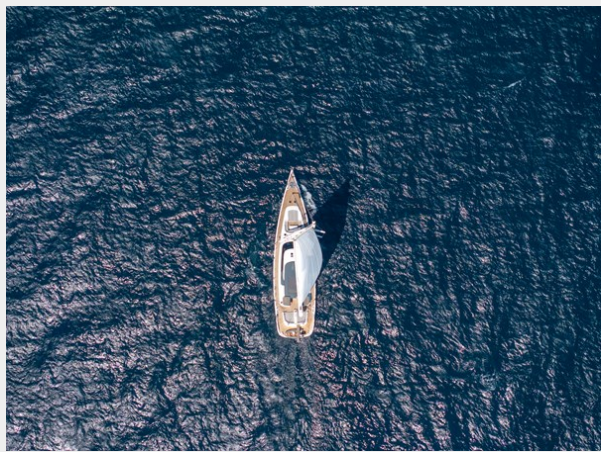
Interior Designer: Timothy Saunders
Yacht Design

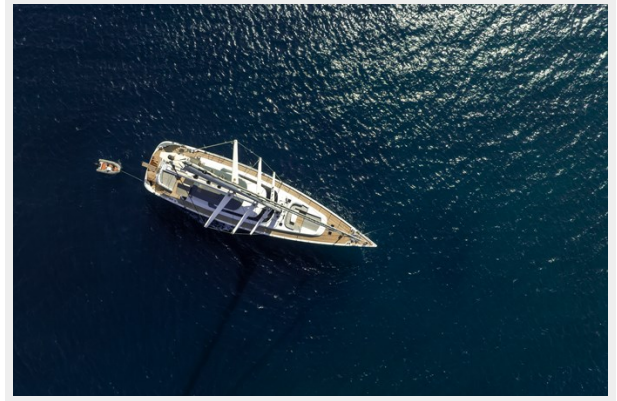
Engine Information

Engines: 1

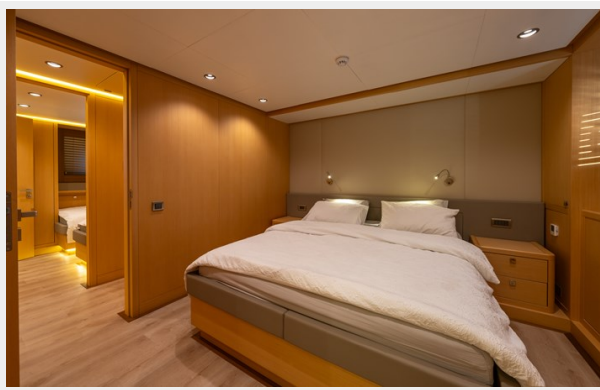
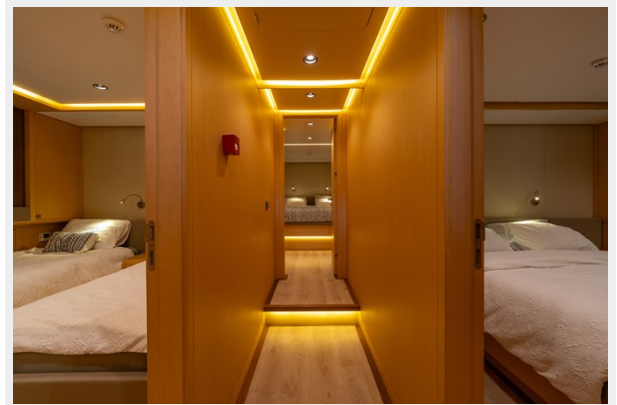
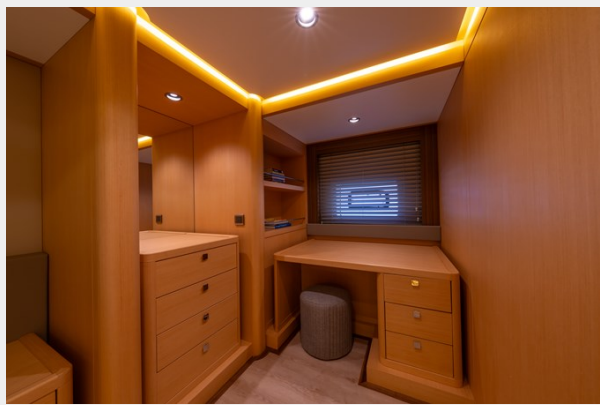
Manufacturer: John Deere

PHOTOS







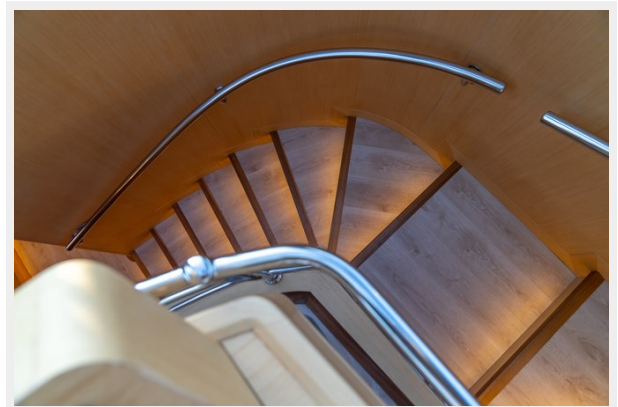
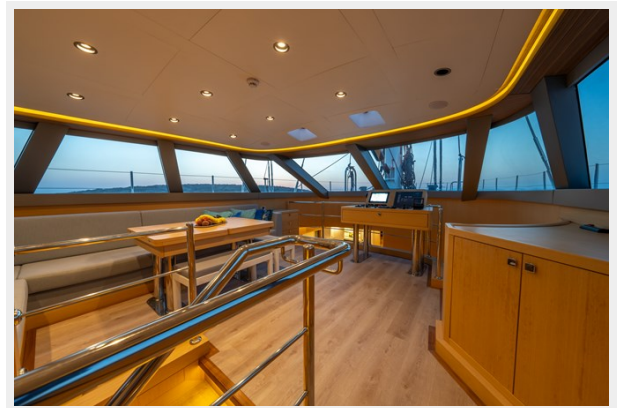
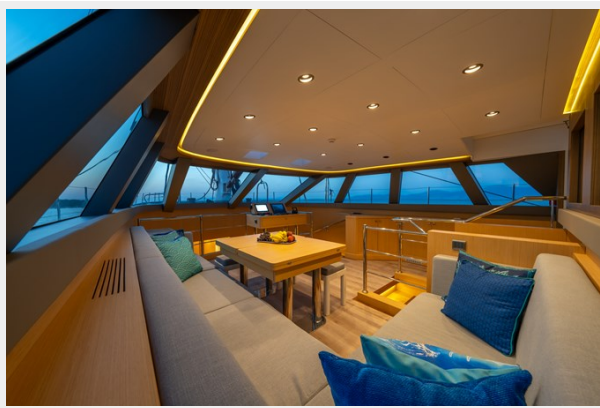




DSC01468



DSC01466



DSC01453



CONTACTS

Andrey Shestakov, leading yacht broker of the sales department of Shestakov Yacht Sales Inc. Shestakov Yacht Sales Inc., the official representative of the Miami/Fort Lauderdale FL headquarters.

Contact details

Email: **andrey@shestakovyachtsales.com**

Web: shestakovyachtsales.com/en/

Telephones

USA: **+1(954)274-4435**

Office hours

Monday – Saturday: **9:00 - 21:00** EDT

Sunday: **closed**

Address



Harbour Towne Marina, 850 NE 3rd St, STE 213, Dania, FL 33004