

SANAM — PALMER JOHNSON



Builder: PALMER JOHNSON

Year Built: 2016

Model: mega yacht

Price: €26,900,000 EUR

Location: Spain

LOA: 171' 11" (52.4mm)

Beam: 29.85

Min Draft: 6' 11" (2.1mm)

Max Draft: 8' 11" (2.7mm)

Cruise Speed: 17.5 Knots Kts. (20 MPH)

Max Speed: 31 Knots Kts. (36 MPH)

Our experienced yacht broker, Andrey Shestakov, will help you choose and buy a yacht that best suits your needs **SANAM — PALMER JOHNSON** from our catalogue. Presently, at **Shestakov Yacht Sales Inc.**, we have a wide variety of yachts available on our sale's list. We also work in close contact with all the big **yacht manufacturers** from all over the world.

If you would like to buy a yacht **SANAM — PALMER JOHNSON** or would like help answering any questions concerning purchasing, selling or chartering a yacht, please call **+1(954)274-4435**

TABLE OF CONTENTS

TABLE OF CONTENTS	2
SPECIFICATIONS	5
Overview	5
Basic Information	5
Dimensions	5
Speed, Capacities and Weight	5
Accommodations	6
Hull and Deck Information	6
Engine Information	6
PHOTOS	7
Starboard Profile	7
Starboard Profile	7
Aerial Profile	7
Aerial Bow Profile	7
Port side and Stern Aerial Profile	7
Aerial Stern Profile	7
Bow Profile	8
Port side and Stern Profile	8
Stern and Garage Profile	8
Stern Profile	8
Aerial Profile	8
Starboard Profile	8
Aft Deck	9
Bridge Deck	9
Bridge Deck Fore Deck Jacuzzi	9
Port side Balcony	9
Main Deck Dining	9
Main Deck Dining	9

Salon	10
Dining Room	10
Salon	10
Master Stateroom	10
Master Stateroom	10
Master Bath	10
Master Bath	11
Master Closet	11
Guest Stateroom	11
Guest Stateroom	11
Twin Stateroom	11
Guest Bath	11
Guest Stateroom	12
Guest Stateroom	12
Guest Stateroom View	12
Twin Stateroom	12
Guest Bath	12
Helm and Pilothouse	12
Galley	13
Crew Quarters	13
Engine Room	13
Engine Room	13
Jet Ski	13
Starboard Profile	13
General Arrangement	14
CONTACTS	15
Contact details	15
Telephones	15
Office hours	15

Address

15

SPECIFICATIONS

Overview

Motor Yacht SANAM is a 171'10" (52.4m) yacht for sale, built and launched by yacht builder Palmer Johnson and delivered in 2016. This vessel sleeps up to 15 guests in 6 staterooms and has accommodations for 10 crew in 5 cabins.

Basic Information

Category: mega yacht

Sub Category: Superyacht

Model Year: 2016

Year Built: 2016

Country: Spain

Dimensions

LOA: 171' 11" (52.4mm)

Beam: 29.85

Min Draft: 6' 11" (2.1mm)

Max Draft: 8' 11" (2.7mm)

Speed, Capacities and Weight

Cruise Speed: 17.5 Knots Kts. (20 MPH)

Cruise Speed Range: 2500

Max Speed: 31 Knots Kts. (36 MPH)

Max Speed Range: 2000 Kts.

Gross Tonnage: 492 Pounds

Water Capacity: 6900 Gallons

Holding Tank: 449.09 Gal Gallons

Fuel Capacity: 15321.98 Gal Gallons

Accommodations

Total Cabins: 6

Sleeps: 15

Crew Cabin: 10

Crew Berths: 5

Hull and Deck Information

Hull Material: Aluminum

Deck Material: Teak

Hull Configuration: Semi-Displacement **Hull Designer:** Nuvolari & Lenard

Exterior Designer: Nuvolari & Lenard **Interior Designer:** Todhunter Earle,
lighting by Lighting Design int.

Engine Information

Engines: 2

Manufacturer: MTU

Fuel Type: Diesel

PHOTOS

Starboard Profile



Starboard Profile



Aerial Profile



Aerial Bow Profile



Port side and Stern Aerial Profile



Aerial Stern Profile



Bow Profile



Port side and Stern Profile



Stern and Garage Profile



Stern Profile



Aerial Profile



Starboard Profile



Aft Deck



Bridge Deck



Bridge Deck Fore Deck Jacuzzi



Port side Balcony



Main Deck Dining



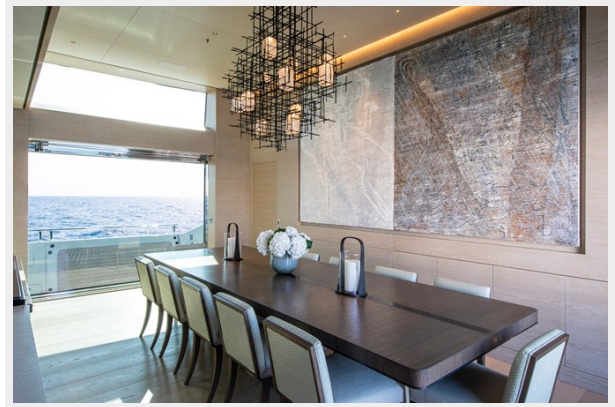
Main Deck Dining



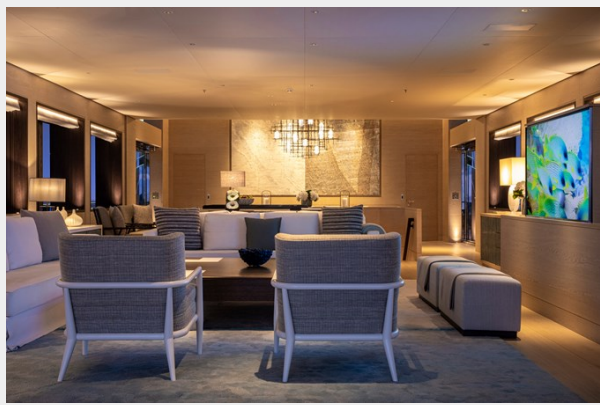
Salon



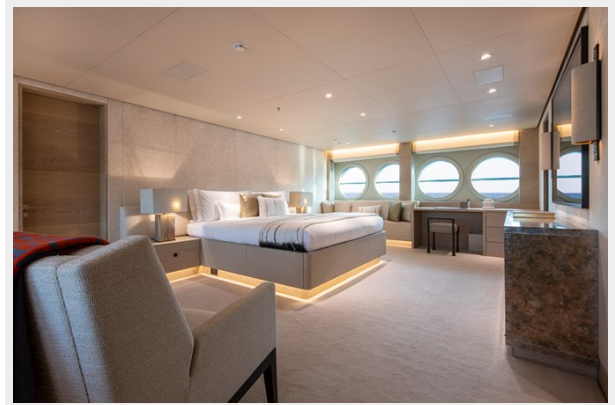
Dining Room



Salon



Master Stateroom



Master Stateroom



Master Bath



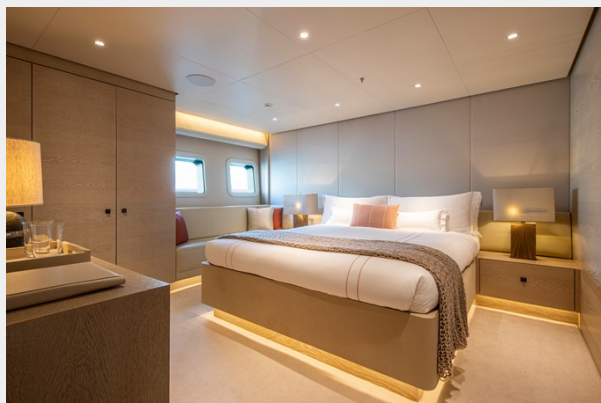
Master Bath



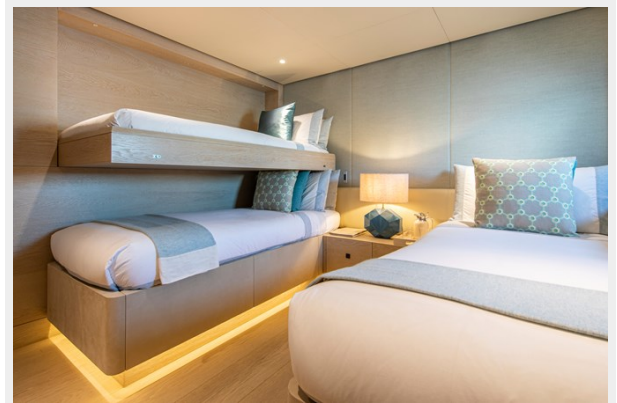
Master Closet



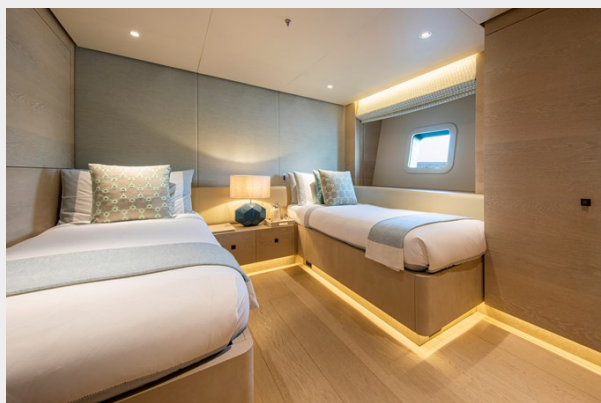
Guest Stateroom



Guest Stateroom



Twin Stateroom



Guest Bath



Guest Stateroom



Guest Stateroom



Guest Stateroom View



Twin Stateroom



Guest Bath



Helm and Pilothouse



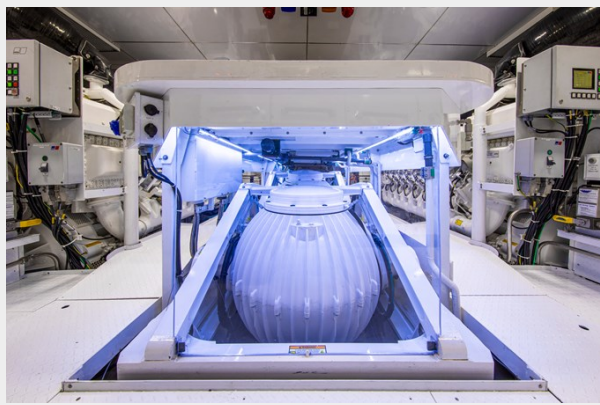
Galley



Crew Quarters



Engine Room



Engine Room



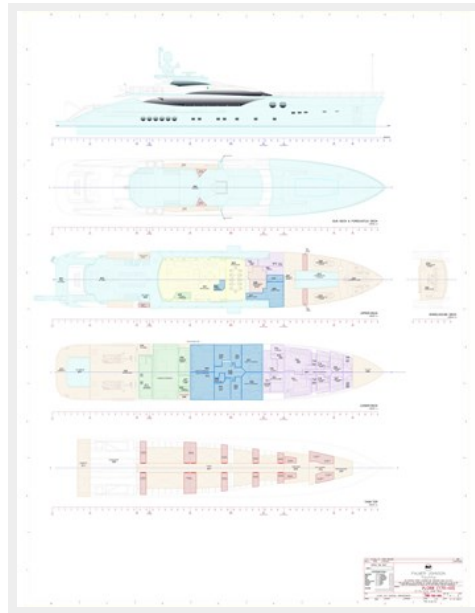
Jet Ski



Starboard Profile



General Arrangement



CONTACTS

Andrey Shestakov, leading yacht broker of the sales department of Shestakov Yacht Sales Inc. Shestakov Yacht Sales Inc., the official representative of the Miami/Fort Lauderdale FL headquarters.

Contact details

Email: **andrey@shestakovyachtsales.com**

Web: shestakovyachtsales.com/en/

Telephones

USA: **+1(954)274-4435**

Office hours

Monday – Saturday: **9:00 - 21:00** EDT

Sunday: **closed**

Address



Harbour Towne Marina, 850 NE 3rd St, STE 213, Dania, FL 33004