

CAMILLA A — CANTIERE NAVALI



Builder: CANTIERE NAVALI

Year Built: 2001

Model: Motor Yacht

Price: €1,500,000 EUR

Location: Italy

LOA: 90' 11" (27.7mm)

Beam: 20.99

Min Draft: 7' 3" (2.2mm)

Max Draft: 7' 3" (2.2mm)

Cruise Speed: 16 Knots Kts. (18 MPH)

Max Speed: 27 Knots Kts. (31 MPH)

Our experienced yacht broker, Andrey Shestakov, will help you choose and buy a yacht that best suits your needs **CAMILLA A — CANTIERE NAVALI** from **our catalogue**. Presently, at **Shestakov Yacht Sales Inc.**, we have a wide variety of yachts available on **our sale's list**. We also work in close contact with all the big **yacht manufacturers** from all over the world.

If you would like to buy a yacht **CAMILLA A — CANTIERE NAVALI** or would like help answering any questions concerning purchasing, selling or chartering a yacht, please call **+1(954)274-4435**

TABLE OF CONTENTS

TABLE OF CONTENTS	2
SPECIFICATIONS	4
Overview	4
Basic Information	4
Dimensions	4
Speed, Capacities and Weight	4
Accommodations	5
Hull and Deck Information	5
Engine Information	5
PHOTOS	6
CAMILLA A EXT 2	6
CAMILLA A EXT	6
CAMILLA BEDROOM 1	6
CAMILLA BEDROOM 2	6
CAMILLA BEDROOM 3	6
CAMILLA CAMILLA TWIN ROOM 2	6
CAMILLA EXT 3	7
CAMILLA INT 2	7
CAMILLA INT 3	7
CAMILLA INT 4 (2)	7
CAMILLA INT 4	7
CAMILLA INTERIOR 1	7
CAMILLA MAIN PHOTO	8
CAMILLA TWIN ROOM 1	8
CONTACTS	9
Contact details	9
Telephones	9
Office hours	9

Address

9

SPECIFICATIONS

Overview

Motor Yacht Camilla A is a remarkable 26-meter Ghibli yacht fully refitted in 2018 and restored to pristine condition. Camilla A's impressive interior configuration is designed to comfortably accommodate up to 8 guests in 4 cabins, consisting of a Master cabin, a VIP cabin, and 2 twin cabins, all with en-suite bathrooms. In addition to the 4 cabins, guests can relax and enjoy themselves in spacious and elegant daytime seating areas, both inside and outside the yacht. The main salon is especially breathtaking, with its lovely design perfect for entertaining guests or hosting an intimate family gathering. The dining area is sure to impress all guests with its classy décor. This beautiful motor yacht also accommodates 4 crew members—a captain, a chef, a hostess, and a sailor—who are there to provide professional service on board.

Basic Information

Category: Motor Yacht

Model Year: 2001

Year Built: 2001

Country: Italy

Dimensions

LOA: 90' 11" (27.7mm)

Beam: 20.99

Min Draft: 7' 3" (2.2mm)

Max Draft: 7' 3" (2.2mm)

Speed, Capacities and Weight

Cruise Speed: 16 Knots Kts. (18 MPH) **Cruise Speed Range:** 200

Max Speed: 27 Knots Kts. (31 MPH) **Max Speed Range:** 350 Kts.

Water Capacity: 3000 Gallons

Fuel Capacity: 4358.84 Gal Gallons

Accommodations

Total Cabins: 4

Total Berths: 8

Sleeps: 8

Total Heads: 3

Crew Cabin: 2

Crew Berths: 2

Crew Heads: 1

Hull and Deck Information

Hull Material: Aluminum

Deck Material: Aluminum

Exterior Designer: Cantieri Navali Liguri
Interior Designer: Studio Scorzoni
Genova

Engine Information

Engines: 2

Manufacturer: MTU

Engine Type: Inboard

Fuel Type: Diesel

PHOTOS

CAMILLA A EXT 2



CAMILLA A EXT



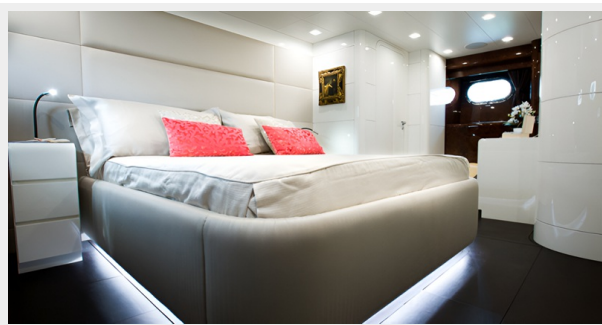
CAMILLA BEDROOM 1



CAMILLA BEDROOM 2



CAMILLA BEDROOM 3



CAMILLA CAMILLA TWIN ROOM 2



CAMILLA EXT 3



CAMILLA INT 2



CAMILLA INT 3



CAMILLA INT 4 (2)



CAMILLA INT 4



CAMILLA INTERIOR 1



CAMILLA MAIN PHOTO



CAMILLA TWIN ROOM 1



CONTACTS

Andrey Shestakov, leading yacht broker of the sales department of Shestakov Yacht Sales Inc. Shestakov Yacht Sales Inc., the official representative of the Miami/Fort Lauderdale FL headquarters.

Contact details

Email: **andrey@shestakovyachtsales.com**

Web: shestakovyachtsales.com/en/

Telephones

USA: **+1(954)274-4435**

Office hours

Monday – Saturday: **9:00 - 21:00** EDT

Sunday: **closed**

Address



Harbour Towne Marina, 850 NE 3rd St, STE 213, Dania, FL 33004