

ANNABELLE — TRUMPY



Builder: TRUMPY

Year Built: 1955

Model: Classic

Price: \$1,300,000 USD

Location: United States

LOA: 80' 1" (24.41mm)

Beam: 17.5

Min Draft: 5' (1.52mm)

Max Draft: 6' (1.83mm)

Cruise Speed: 12.5 Knots Kts. (14 MPH)

Max Speed: 15 Knots Kts. (17 MPH)

Our experienced yacht broker, Andrey Shestakov, will help you choose and buy a yacht that best suits your needs **ANNABELLE — TRUMPY** from **our catalogue**. Presently, at **Shestakov Yacht Sales Inc.**, we have a wide variety of yachts available on **our sale's list**. We also work in close contact with all the big **yacht manufacturers** from all over the world.

If you would like to buy a yacht **ANNABELLE — TRUMPY** or would like help answering any questions concerning purchasing, selling or chartering a yacht, please call **+1(954)274-4435**

TABLE OF CONTENTS

TABLE OF CONTENTS	2
SPECIFICATIONS	4
Overview	4
Basic Information	5
Dimensions	5
Speed, Capacities and Weight	6
Accommodations	6
Hull and Deck Information	6
Engine Information	6
PHOTOS	7
Profile 14	7
Profile 1	7
aft deck 1	7
Aft Deck	7
bow 3	7
bow 1	7
bow 2	8
Bridge 4	8
Bridge 5	8
Salon 1	8
Salon	8
salon 2	8
Master Stateroom	9
Master Bathroom	9
Guest Twin Stateroom	9
Bunk Room	9
Galley 1	9
Master	9

Engine Room 1	10
Engine Room 2	10
Engine Room 3	10
Starboard Deck 1	10
Starboard Deck	10
Guests 1	10
Profile 10	11
running 1	11
running 2	11
Stern 2	11
Guests 4	11
stern 5	11
CONTACTS	12
Contact details	12
Telephones	12
Office hours	12
Address	12

SPECIFICATIONS

Overview

With her elevated aft pilot house and cockpit; varnished mahogany superstructure; long, lean white hull and beautifully finished walnut interior, the 80' Trumpy "cruiser" Annabelle (Ex.Osceola/Windsong II) is a quintessential classic gentleman's motor yacht and arguably one of the famed-company's prettiest. She was designed by John Trumpy Sr. and launched from the Eastport, MD yard in 1955 as Rumak III for William and Ruth McKelvey of Pittsburgh PA.

Like many Trumpy's, Annabelle was designed for cruising the waters of the east coast between South Florida and New England and has spent most of her 70-year career doing exactly that. With accommodations for 2-3 crew and 6 guests, plenty of carrying capacity and modern systems and amenities throughout, she's still very well suited to the sort of extensive cruising for which she was designed.

Annabelle was substantially refit at the Hinckley yard in South West Harbor in the early 2000's during which she was re-planked below the water line, had a comprehensive systems update, and a new composite teak deck fitted. New Cummins diesels were then installed in 2006. She has been well cared for and updated by the same captain and owner since.

The classic motor yacht experience is all about the wheelhouse and aft entertaining cockpit so that's a good place to start discussing Annabelle. She has an expansive varnished mahogany helm station with modern electronics cleverly hidden but easily at hand. Overlooking the helm is a wide, elevated teak and blue leather settee, and behind it a well-appointed wet bar (with sink, fridge, ice maker and loads of storage, again nicely hidden behind varnished paneling). Aft of the bar is the entertaining cockpit with a large U-shaped settee and table at the aft end. It's fully enclosable with isinglass panels and has seating for a dozen with excellent visibility all-around.

It's a few steps down from the wheelhouse into the satin finished, walnut paneled salon. The main settee, two swivel chairs and convertible dining/coffee table, are forward to port, with an entertainment console and writing desk aft. Access to the galley and crew quarters is forward to stb'd and to the owner's and guest accommodations aft to port.

Moving aft down the companionway from the salon, there is a twin berth guest cabin to stb'd featuring an ensuite head with a sink and toilet. To port is an over under twin berth guest cabin and aft of it the guest/day head with separate shower for the two guest cabins. The two guest cabins are tastefully appointed with ample storage, matte finished walnut berths and cabinetry, and sisal wrapped bulkheads.

All the way aft is the full width, symmetrical, twin single-berth owner's cabin. It offers

plenty of storage in two large hanging lockers and drawers. The spacious ensuite head (with bathtub, a large vanity and heated towel racks and mirrors) is forward to starboard. This cabin also features its own entrance up a few steps into the private aft cockpit.

Down the forward companionway from the salon is the spacious, classically styled but thoroughly modern galley. It has a residential style stove and hood, ample fridge, freezer, counter and storage space. Forward of the galley is the crew space with a private captain's cabin aft to port, two additional over under crew berths forward to port, the head and dinette (with washer dryer underneath) to stb'd and the shower all the way forward.

Aft of the galley, through a watertight door is the engine room. It is clean and well-lit with good access on all sides of the twin Cummins QSL9s. The ER also houses the new generator, hydraulics for the stabilizers, aircon units, water maker, and lithium-ion house batteries with an inverter for silence at anchor.

With Trumpy styling, modern systems and tastefully appointed interior by Mimi McMakin of Kemble Interiors, Annabelle is the quintessential classic gentleman's motor yacht. She's an ideal dayboat but also a well-equipped, self-sufficient coastal cruiser with accommodations for 6. She has been thoroughly refit, maintained to the highest standards and is ready for her next owner.

Basic Information

Category: Classic

Sub Category: Classic

Model Year: 1955

Year Built: 1955

Country: United States

Dimensions

LOA: 80' 1" (24.41mm)

LWL: 17' 6" (5.33mm)

Beam: 17.5

Min Draft: 5' (1.52mm)

Max Draft: 6' (1.83mm)

Speed, Capacities and Weight

Cruise Speed: 12.5 Knots Kts. (14 MPH)

Cruise Speed Range: 400

Max Speed: 15 Knots Kts. (17 MPH)

Gross Tonnage: 75 Pounds

Water Capacity: 400 Gallons

Holding Tank: 160 Gal Gallons

Fuel Capacity: 800 Gal Gallons

Fuel Consumption: 22 Gal Gallons

Accommodations

Total Cabins: 3

Sleeps: 6

Crew Cabin: 3

Crew Berths: 3

Crew Heads: 1

Hull and Deck Information

Hull Material: Wood

Deck Material: Teak

Hull Designer: John Trumpy

Interior Designer: Mimi McMakin

Engine Information

Engines: 2

Manufacturer: Cummins

Engine Type: Inboard

Fuel Type: Diesel

PHOTOS

Profile 14



Profile 1



aft deck 1



Aft Deck



bow 3



bow 1



bow 2



Bridge 4



Bridge 5



Salon 1



Salon



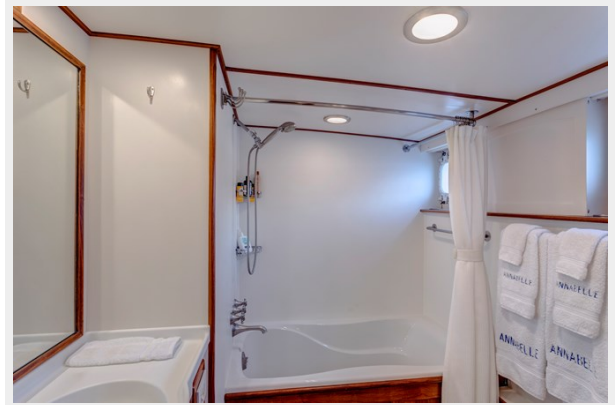
salon 2



Master Stateroom



Master Bathroom



Guest Twin Stateroom



Bunk Room



Master



Galley 1



Engine Room 1



Engine Room 2



Engine Room 3



Starboard Deck 1



Starboard Deck



Guests 1



Profile 10



running 1



running 2



Stern 2



Guests 4



stern 5



CONTACTS

Andrey Shestakov, leading yacht broker of the sales department of Shestakov Yacht Sales Inc. Shestakov Yacht Sales Inc., the official representative of the Miami/Fort Lauderdale FL headquarters.

Contact details

Email: **andrey@shestakovyachtsales.com**

Web: shestakovyachtsales.com/en/

Telephones

USA: **+1(954)274-4435**

Office hours

Monday – Saturday: **9:00 - 21:00** EDT

Sunday: **closed**

Address



Harbour Towne Marina, 850 NE 3rd St, STE 213, Dania, FL 33004