

1998 PACIFIC SEACRAFT 40 — PACIFIC SEACRAFT



Builder: PACIFIC SEACRAFT

Year Built: 1998

Model: Cruising Sailboat

Price: \$269,000 USD

Location: United States

LOA: 42' 3" (12.85mm)

Beam: 12.5

Max Draft: 6' 1" (1.85mm)

Our experienced yacht broker, Andrey Shestakov, will help you choose and buy a yacht that best suits your needs **1998 Pacific Seacraft 40 — PACIFIC SEACRAFT** from **our catalogue**. Presently, at **Shestakov Yacht Sales Inc.**, we have a wide variety of yachts available on **our sale's list**. We also work in close contact with all the big **yacht manufacturers** from all over the world.

If you would like to buy a yacht **1998 Pacific Seacraft 40 — PACIFIC SEACRAFT** or would like help answering any questions concerning purchasing, selling or chartering a yacht, please call **+1(954)274-4435**

TABLE OF CONTENTS

TABLE OF CONTENTS	2
SPECIFICATIONS	3
Overview	3
Basic Information	3
Dimensions	4
Speed, Capacities and Weight	4
Accommodations	4
Hull and Deck Information	4
Engine Information	4
PHOTOS	5
CONTACTS	14
Contact details	14
Telephones	14
Office hours	14
Address	14

SPECIFICATIONS

Overview

Designed by W.I.B. Crealock, the Pacific Seacraft 40, is the evolution of the 31,34,37, and the 44. A deck layout which features a centerline king plank for footing, an extended bow platform for anchors, and a windlass boss, double spreader keel stepped mast, a solid boom-vang, lines led aft to the cockpit, a molded in sheer-water for dodger attachment, mid-boom sheeting on the main, tall stanchions and lifelines for safety, 8 large mooring cleats, and bulwarks for footing and safety. The interior has two separate staterooms, an enclosed head with separate shower stall, a large salon, gourmet galley, and a large Navigation Station with electronics mounting panels forward and outboard. The engine room has excellent access from the cockpit and aft of the companionway ladder. The PS-40s highly successful underbody design has a long chord fin with external lead ballast that also acts as a grounding shoe and a heavily constructed full skeg to protect the rudder. The design is unique because the prop is in an aperture within the skeg so there is no exposed shaft or strut left vulnerable to logs or shipping containers. The forefoot is moderately deep so the 40 sails comfortably to weather without pounding. The 40's powerful performance on and off the wind consistently produces average speeds of 7 to 8 knots plus which equates to increased daily mileage for swift passages. The shrouds are located well inboard for tight sheeting angles and close winded ability. The double spreader, cutter rig is well suited for offshore work and balances readily even as the anemometer climbs upward. Tiyoweh is well maintained and had considerable systems upgrades by her current and previous owners. Current owners are looking to downsize to a solid 32' to 35' sailboat for local and inside passage cruising. Trades are welcome. Moored in Poulsbo WA and shown by appointment.

Basic Information

Category: Cruising Sailboat

Model Year: 1998

Year Built: 1998

Country: United States

Dimensions

LOA: 42' 3" (12.85mm)**LWL:** 31' 3" (9.52mm)**LOD:** 40' (12.17mm)**Beam:** 12.5**Max Draft:** 6' 1" (1.85mm)

Speed, Capacities and Weight

Water Capacity: 122 Gallons**Holding Tank:** 40 Gal Gallons**Fuel Capacity:** 67 Gal Gallons

Accommodations

Total Cabins: 2**Total Heads:** 1

Hull and Deck Information

Hull Material: Fiberglass**Hull Configuration:** Moderate Fin**Hull Designer:** W.I.B. Crealock

Engine Information

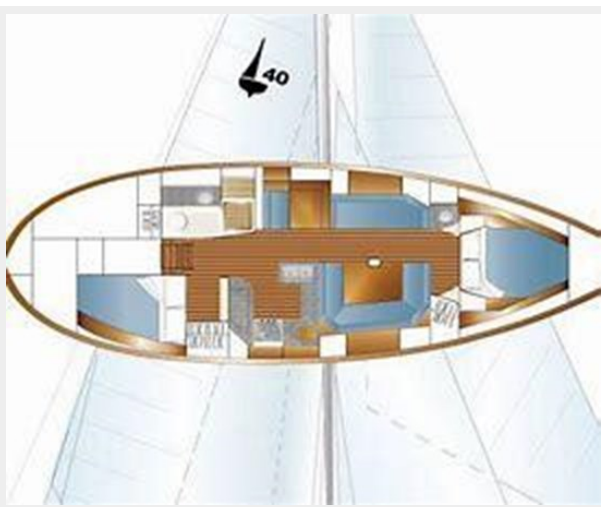
Engines: 1**Manufacturer:** Yanmar**Engine Type:** Inboard**Fuel Type:** Diesel

PHOTOS



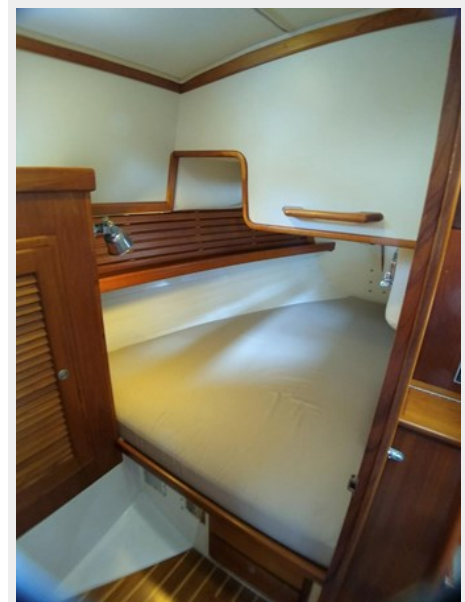


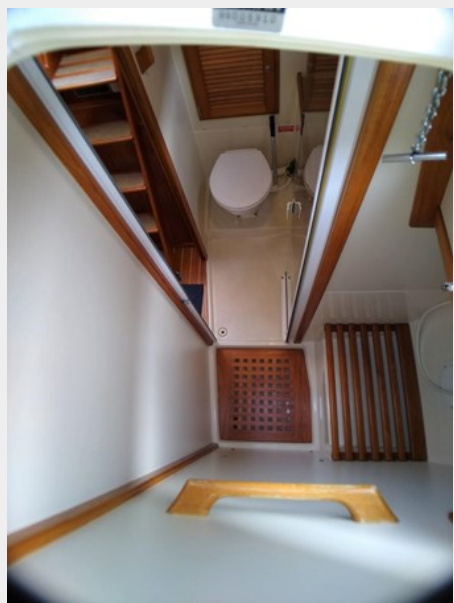














CONTACTS

Andrey Shestakov, leading yacht broker of the sales department of Shestakov Yacht Sales Inc. Shestakov Yacht Sales Inc., the official representative of the Miami/Fort Lauderdale FL headquarters.

Contact details

Email: **andrey@shestakovyachtsales.com**

Web: shestakovyachtsales.com/en/

Telephones

USA: **+1(954)274-4435**

Office hours

Monday – Saturday: **9:00 - 21:00** EDT

Sunday: **closed**

Address



Harbour Towne Marina, 850 NE 3rd St, STE 213, Dania, FL 33004