

MYSTIC — BENETEAU



Builder: BENETEAU

Year Built: 2017

Model: Cruising Sailboat

Price: \$218,500 USD

Location: United States

LOA: 38' 1" (11.61mm)

Beam: 13.1

Min Draft: 5' 6" (1.65mm)

Our experienced yacht broker, Andrey Shestakov, will help you choose and buy a yacht that best suits your needs **MYSTIC — BENETEAU** from our catalogue. Presently, at **Shestakov Yacht Sales Inc.**, we have a wide variety of yachts available on our sale's list. We also work in close contact with all the big **yacht manufacturers** from all over the world.

If you would like to buy a yacht **MYSTIC — BENETEAU** or would like help answering any questions concerning purchasing, selling or chartering a yacht, please call **+1(954)274-4435**

TABLE OF CONTENTS

TABLE OF CONTENTS	2
SPECIFICATIONS	5
Overview	5
Basic Information	5
Dimensions	5
Speed, Capacities and Weight	5
Accommodations	6
Hull and Deck Information	6
Engine Information	6
PHOTOS	7
Mystic stbd hull profile	7
Mystic double anchor roller	7
Mystic cockpit	7
Mystic Bimini	7
Mystic double helms	7
Mystic electronics port side helm	7
Mystic open transom	8
Mystic swim platform	8
Mystic Swim platform	8
Mystic stbd helm and seating	8
Mystic Port cockpit seat	8
Mystic cockpit	8
Mystic cockpit table leaves out	9
Mystic cockpit fwd	9
Mystic cabin house	9
Mystic deck fwd	9
Mystic electric anchor windlass	9
Mystic foredeck	9

Mystic anchor rollers	10
Mystic deck aft	10
Mystic Dodger	10
Mystic cockpit	10
Mystic interior with doors open	10
Mystic interior with doors closed	10
Mystic fwd berth	11
Mystic fwd berth with hull windows	11
Mystic port settee	11
Mystic stbd settee	11
Mystic interior aft	11
Mystic interior aft from fwd berth	11
Mystic table	12
Mystic table leaves extended	12
Mystic galley	12
Mystic Galley 2	12
Mystic microwave	12
Mystic refrigerator and freezer	12
Mystic Galley sink	13
Mystic nav station	13
Mystic nav station 2	13
Mystic air conditioning control	13
Mystic Xantrex monitor	13
Mystic Inverter control	13
Mystic VHF radio	14
Mystic Fusion stereo	14
Mystic nav station up	14
Mystic nav station down	14
Mystic nav station converted to berth	14

Mystic head and vanity	14
Mystic shower room	15
Mystic companionway steps	15
Mystic Yanmar engine	15
Mystic Hour meter - 287 hours	15
Mystic battery switches	15
CONTACTS	16
Contact details	16
Telephones	16
Office hours	16
Address	16

SPECIFICATIONS

Overview

MYSTIC is a beautiful and lightly used version of this recent and sought-after model from Beneteau. This boat has sailed local New England waters with her original owners who now find they are too busy to use her as intended. She is very well set up for cruising and has been well maintained. The Oceanis 38.1 is a fast and well-balanced performer with a beautiful and contemporary interior. Mystic has the mahogany interior with L-galley and the two stateroom layout with optional stall shower room.

Additional features include Hard-bottom inflatable and outboard, Reverse cycle air conditioning/heating system, double doors to the fwd cabin, large hull windows to see out, full cockpit canvas, teak decking in the cockpit, full electronics suite, electric winch, electric anchor windlass, Bow thruster, three blade folding prop, refrigeration, electric Quiet Flush toilet, and much gear including custom mattress covers. safety gear, and more. .

Owners plans have changed and they are looking to move on.. Call today and set a time to view this beautiful modern design.

Basic Information

Category: Cruising Sailboat

Model Year: 2017

Year Built: 2017

Country: United States

Dimensions

LOA: 38' 1" (11.61mm)

LWL: 35' 3" (10.72mm)

Beam: 13.1

Min Draft: 5' 6" (1.65mm)

Speed, Capacities and Weight

Water Capacity: 34 Gallons

Holding Tank: 21 Gal Gallons

Fuel Capacity: 34 Gal Gallons

Accommodations

Total Cabins: 2

Total Berths: 6

Total Heads: 1

Hull and Deck Information

Hull Material: Fiberglass

Deck Material: Fiberglass Sandwich

Hull Configuration: Monohull

Hull Color: White

Hull Designer: Finot-Conq

Interior Designer: Nauta Design

Engine Information

Engines: 1

Manufacturer: Yanmar

Engine Type: Inboard

Fuel Type: Diesel

PHOTOS

Mystic stbd hull profile



Mystic double anchor roller



Mystic cockpit



Mystic Bimini



Mystic double helms



Mystic electronics port side helm



Mystic open transom



Mystic swim platform



Mystic Swim platform



Mystic stbd helm and seating



Mystic Port cockpit seat



Mystic cockpit



Mystic cockpit table leaves out



Mystic cockpit fwd



Mystic cabin house



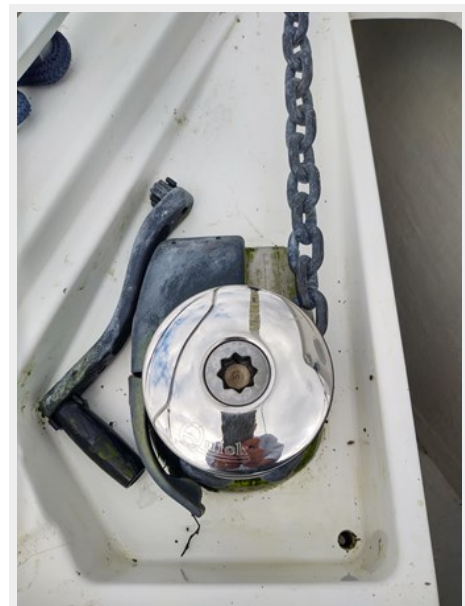
Mystic deck fwd



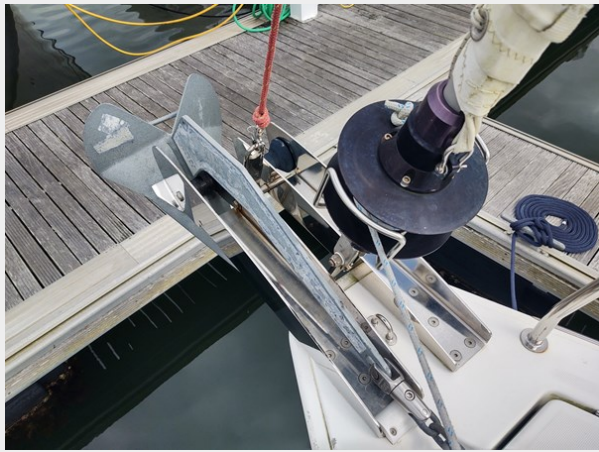
Mystic foredeck



Mystic electric anchor windlass



Mystic anchor rollers



Mystic deck aft



Mystic Dodger



Mystic cockpit



Mystic interior with doors open



Mystic interior with doors closed



Mystic fwd berth



Mystic fwd berth with hull windows



Mystic port settee



Mystic stbd settee



Mystic interior aft



Mystic interior aft from fwd berth



Mystic table



Mystic table leaves extended



Mystic galley



Mystic Galley 2



Mystic microwave



Mystic refrigerator and freezer



Mystic Galley sink



Mystic nav station



Mystic nav station 2



Mystic air conditioning control



Mystic Xantrex monitor



Mystic Inverter control



Mystic VHF radio



Mystic Fusion stereo



Mystic nav station up



Mystic nav station down



Mystic nav station converted to berth



Mystic head and vanity



Mystic shower room



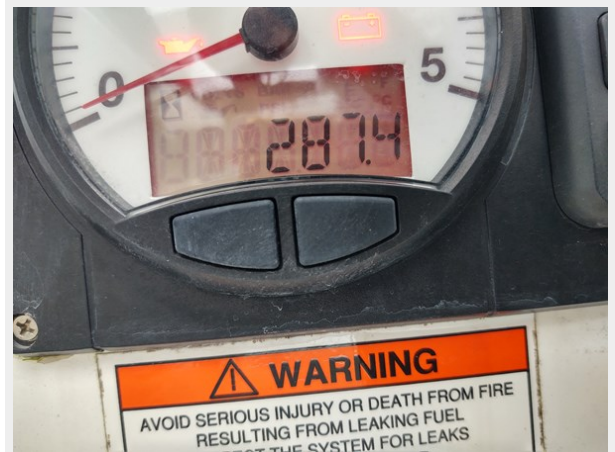
Mystic companionway steps



Mystic Yanmar engine



Mystic Hour meter - 287 hours



Mystic battery switches



CONTACTS

Andrey Shestakov, leading yacht broker of the sales department of Shestakov Yacht Sales Inc. Shestakov Yacht Sales Inc., the official representative of the Miami/Fort Lauderdale FL headquarters.

Contact details

Email: **andrey@shestakovyachtsales.com**

Web: shestakovyachtsales.com/en/

Telephones

USA: **+1(954)274-4435**

Office hours

Monday – Saturday: **9:00 - 21:00** EDT

Sunday: **closed**

Address



Harbour Towne Marina, 850 NE 3rd St, STE 213, Dania, FL 33004