

2024 SELENE 38 VOYAGER — SELENE YACHTS



Builder: SELENE YACHTS

Year Built: 2024

Model: trawler

Price: Price on Application

Location: New Zealand

LOA: 41' 9" (12.7mm)

Beam: 14.5

Max Draft: 4' 8" (1.42mm)

Cruise Speed: 9 Knots Kts. (10 MPH)

Max Speed: 11 Knots Kts. (13 MPH)

Our experienced yacht broker, Andrey Shestakov, will help you choose and buy a yacht that best suits your needs **2024 Selene 38 Voyager — SELENE YACHTS** from our catalogue. Presently, at **Shestakov Yacht Sales Inc.**, we have a wide variety of yachts available on our sale's list. We also work in close contact with all the big yacht manufacturers from all over the world.

If you would like to buy a yacht **2024 Selene 38 Voyager — SELENE YACHTS** or would like help answering any questions concerning purchasing, selling or chartering a yacht, please call **+1(954)274-4435**

TABLE OF CONTENTS

TABLE OF CONTENTS	2
SPECIFICATIONS	3
Overview	3
Basic Information	3
Dimensions	4
Speed, Capacities and Weight	4
Accommodations	4
Hull and Deck Information	4
Engine Information	4
PHOTOS	5
CONTACTS	16
Contact details	16
Telephones	16
Office hours	16
Address	16

SPECIFICATIONS

Overview

The Selene 38 Voyager aft cabin is a legend... A happy and classy gentleman's yacht that has been cruising in British Columbia, the Bahamas, the Greek islands, and Southeast Asia for decades already. This beautiful and charming pocket yacht has always been incredibly popular because of its unique layout, which guarantees privacy for four people or two couples. Because of its moderate size, it can be hauled out by the smallest Travelift and accommodated in almost any marina anywhere in the world. Thanks to its classic lines designed by Howard Chen and the legendary marine architect Ted Hood, winner of the 1972 America's Cup, the Selene 38 Voyager is and will remain one of Howard Chen's favorite yachts. When creating this yacht, the designers adopted the unique concept of the "Whale Back" hull, which was a trademark of Ted Hood's designs. This is why the Archer line has so much headroom and space in the engine room. It probably has the best engine room layout for its size anywhere. While the Selene 38 is a legendary yacht, she doesn't compromise on modern technology and first-class components, like the recent addition of Diamond Sea Glaze doors, improved soundproofing, optional air-conditioning, generator, and larger aluminum fuel tanks for extensive cruising. Howard says that the best-selling yachts of all time were the Grand Banks 36-42, but when their production ended for a while, Howard decided he wanted to bring a high-quality compact aft-cabin yacht back to the market. He wanted to build an elegant yacht with traditional timber joinery, leather upholstery, teak & holly floors, a spacious interior with two cabins and two heads, a cozy salon, a practical galley, and safe decks. The Selene 38 Voyager is an excellent family cruiser or the perfect Looper's yacht. A tender finds its natural spot on top of the aft cabin, where it can be loaded by a mast and boom. Many Selene 38 Voyagers make use of the mast for a steadying sail, which gives the boat a classy "heritage yacht" style as well as a simple and maintenance-free stabilization system. And all this, including a flybridge with an outdoor deck salon, comes at an affordable price! As the entry-level model of the trawler range, the Selene 38 Voyager is still a best-seller. We call it our "small super-yacht"; all the space is inside...

Basic Information

Category: trawler

Model Year: 2024

Year Built: 2024

Country: New Zealand

Dimensions

LOA: 41' 9" (12.7mm)

LWL: 36' 5" (11.09mm)

Beam: 14.5

Max Draft: 4' 8" (1.42mm)

Speed, Capacities and Weight

Cruise Speed: 9 Knots Kts. (10 MPH)

Max Speed: 11 Knots Kts. (13 MPH)

Water Capacity: 908 Gallons

Holding Tank: 59.97 Gal Gallons

Fuel Capacity: 699.79 Gal Gallons

Accommodations

Total Cabins: 2

Total Heads: 1

Hull and Deck Information

Hull Material: Fiberglass

Hull Designer: Howard Chen

Engine Information

Engines: 1

Manufacturer: Cummins

Engine Type: Inboard

Fuel Type: Diesel

PHOTOS









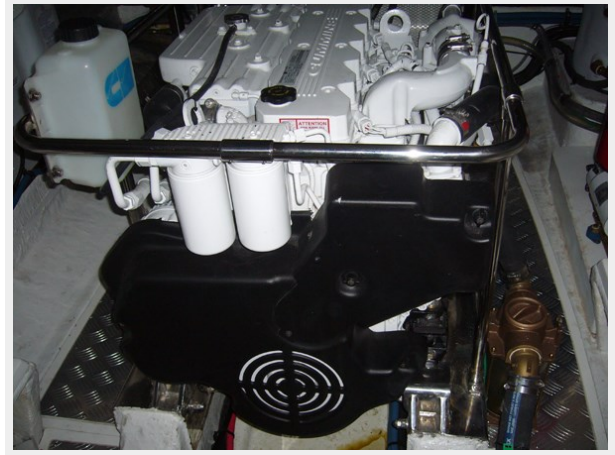
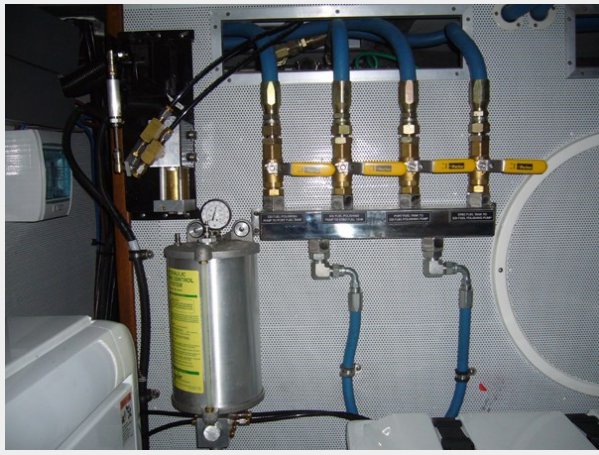














CONTACTS

Andrey Shestakov, leading yacht broker of the sales department of Shestakov Yacht Sales Inc. Shestakov Yacht Sales Inc., the official representative of the Miami/Fort Lauderdale FL headquarters.

Contact details

Email: **andrey@shestakovyachtsales.com**

Web: shestakovyachtsales.com/en/

Telephones

USA: **+1(954)274-4435**

Office hours

Monday – Saturday: **9:00 - 21:00** EDT

Sunday: **closed**

Address



Harbour Towne Marina, 850 NE 3rd St, STE 213, Dania, FL 33004