

## 2024 SELENE 49 CLASSIC — SELENE YACHTS



**Builder:** SELENE YACHTS

**Year Built:** 2024

**Model:** Pilothouse

**Price:** Price on Application

**Location:** New Zealand

**LOA:** 53' 11" (16.43mm)

**Beam:** 15.66

**Max Draft:** 5' 11" (1.8mm)

**Cruise Speed:** 9 Knots Kts. (10 MPH)

**Max Speed:** 11 Knots Kts. (13 MPH)

Our experienced yacht broker, Andrey Shestakov, will help you choose and buy a yacht that best suits your needs **2024 Selene 49 Classic — SELENE YACHTS** from **our catalogue**. Presently, at **Shestakov Yacht Sales Inc.**, we have a wide variety of yachts available on **our sale's list**. We also work in close contact with all the big **yacht manufacturers** from all over the world.

If you would like to buy a yacht **2024 Selene 49 Classic — SELENE YACHTS** or would like help answering any questions concerning purchasing, selling or chartering a yacht, please call **+1(954)274-4435**

---

# TABLE OF CONTENTS

---

TABLE OF CONTENTS	2
SPECIFICATIONS	3
Overview	3
Basic Information	3
Dimensions	4
Speed, Capacities and Weight	4
Accommodations	4
Hull and Deck Information	4
Engine Information	4
PHOTOS	5
CONTACTS	10
Contact details	10
Telephones	10
Office hours	10
Address	10

# SPECIFICATIONS

---

## Overview

---

A VERY EFFICIENT HULL The Selene 49 is the next-generation evolution of the very popular Selene 47. It features the Deep-Hull™ design and Cruiser Stern™, which improves the engine room and lazarette headroom and makes the hull even more efficient than its predecessor. The Selene 49 has a traditional « salty » look from the outside. Another significant difference is that a broader flybridge gives space for entertaining friends and family with style in the open air and sample room on the aft deck for a dinghy and hydraulic crane. The flybridge layout with a canvas cover or a hard-top includes an L-shaped settee and table and a bar with sink and BBQ. The hull is more profound than the Selene 47 and is meant to carve through the water. The longer LOA of the Selene 49 translates to an 8" increase in the cockpit and 4" more in the salon. The living space is large and spacious for long cruising days. The salon is luxuriously finished in teak. Past the L-shaped dinette for four to port, the U-shaped galley forward has granite countertops and modern appliances, including a full-size refrigerator with a freezer. The two or three-stateroom accommodations down below are spacious due to the entire hull sections forward. The master stateroom has a queen-size island berth with teak and holly steps on both sides, plus two large cedar-lined hanging lockers. 2,000 NM RANGE Headroom for the engine room has increased by a whole foot, and the larger Cummins QSL 9.0 330 horsepower engine is standard. The Selene 49 is an excellent long-range cruising boat with a D/L ratio at a whole load of 316 and an A/B ratio at a full load of 2.54. At 1,800 rpm, the Selene 49 has a cruising speed of 8.5 knots for a range of 2,000 nautical miles. The 49 also boasts an integral swim platform with a telescopic swim ladder. Beneath the 18" hull extension Cruiser Stern™, there is extra room in the lazarette for storing gear and supplies and, simultaneously, greater buoyancy to offset the weight of the enormous flybridge. As the flagship of the smaller Selenes, the Selene 49 boasts a luxury usually only found on its larger sisters in the range, but all in an affordable package that's easy to handle as a couple.

## Basic Information

---

**Category:** Pilothouse

**Sub Category:** Pilothouse

**Model Year:** 2024

**Year Built:** 2024

**Country:** New Zealand

## Dimensions

---

**LOA:** 53' 11" (16.43mm)

**LWL:** 46' 10" (14.28mm)

**Beam:** 15.66

**Max Draft:** 5' 11" (1.8mm)

## Speed, Capacities and Weight

---

**Cruise Speed:** 9 Knots Kts. (10 MPH)

**Max Speed:** 11 Knots Kts. (13 MPH)

**Water Capacity:** 807 Gallons

**Holding Tank:** 59.97 Gal Gallons

**Fuel Capacity:** 1199.87 Gal Gallons

## Accommodations

---

**Total Cabins:** 3

**Total Heads:** 2

## Hull and Deck Information

---

**Hull Material:** Fiberglass

**Hull Designer:** Howard Chen

## Engine Information

---

**Engines:** 1

**Manufacturer:** John Deere

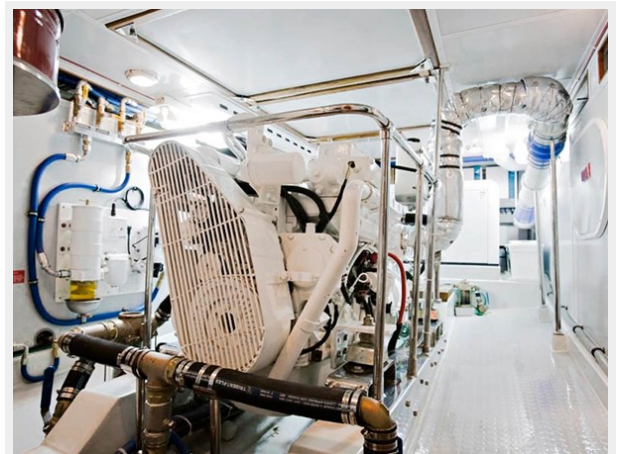
**Engine Type:** Inboard

**Fuel Type:** Diesel

# PHOTOS













# CONTACTS

---

Andrey Shestakov, leading yacht broker of the sales department of Shestakov Yacht Sales Inc. Shestakov Yacht Sales Inc., the official representative of the Miami/Fort Lauderdale FL headquarters.

## Contact details

---

Email: **andrey@shestakovyachtsales.com**

Web: [shestakovyachtsales.com/en/](https://shestakovyachtsales.com/en/)

## Telephones

---

USA: **+1(954)274-4435**

## Office hours

---

Monday – Saturday: **9:00 - 21:00** EDT

Sunday: **closed**

## Address

---



Harbour Towne Marina, 850 NE 3rd St, STE 213, Dania, FL 33004