

M — SANLORENZO



Builder: SANLORENZO

Year Built: 2024

Model: expedition yacht

Price: Price on Application

Location: Monaco

LOA: 154' 3" (47mm)

Beam: 31.49

Max Draft: 9' (2.75mm)

Cruise Speed: 12.5 Knots Kts. (14 MPH)

Max Speed: 15 Knots Kts. (17 MPH)

Our experienced yacht broker, Andrey Shestakov, will help you choose and buy a yacht that best suits your needs **M — SANLORENZO** from **our catalogue**. Presently, at **Shestakov Yacht Sales Inc.**, we have a wide variety of yachts available on **our sale's list**. We also work in close contact with all the big **yacht manufacturers** from all over the world.

If you would like to buy a yacht **M — SANLORENZO** or would like help answering any questions concerning purchasing, selling or chartering a yacht, please call **+1(954)274-4435**

TABLE OF CONTENTS

TABLE OF CONTENTS	2
SPECIFICATIONS	3
Overview	3
Basic Information	3
Dimensions	3
Speed, Capacities and Weight	4
Accommodations	4
Hull and Deck Information	4
Engine Information	4
PHOTOS	5
CONTACTS	17
Contact details	17
Telephones	17
Office hours	17
Address	17

SPECIFICATIONS

Overview

Delivered in August this year, M will make her grand premiere at the Monaco Yacht Show. With less than a month between her delivery and debut, M will be one of – if not the – newest superyachts on display at the prestigious show. M is the latest model from Sanlorenzo’s successful 500EXP series – and the only one currently available for purchase. M was designed by Francesco Paszkowski, with interiors by Studio Indigo. She has a striking vivid blue hull, balanced against a crisp white superstructure. Accommodation is for 12 guests across five en-suite staterooms. The master suite aboard M is located on the main deck forward and features drop-down breakfast terraces that open out over the sea. She can also host 10 crew members. M offers plenty of al fresco social space. She has a large sheltered sundeck complete with an observation lounge, a Jacuzzi, a bar, and plenty of sun loungers. The upper deck is just as casual, with a wet bar, and an extendable brunch table for five. Glass sliding doors provide direct access to the upper saloon. The upper deck follows the same casual theme, with shaped furnishings and a crisp, neutral décor.

Basic Information

Category: expedition yacht

Sub Category: Expedition or Explorer

Model Year: 2024

Year Built: 2024

Country: Monaco

Dimensions

LOA: 154' 3" (47mm)

Beam: 31.49

Max Draft: 9' (2.75mm)

Speed, Capacities and Weight

Cruise Speed: 12.5 Knots Kts. (14 MPH)

Max Speed: 15 Knots Kts. (17 MPH)

Gross Tonnage: 499 Pounds

Water Capacity: 8000 Gallons

Holding Tank: 3302.15 Gal Gallons

Fuel Capacity: 19548.73 Gal Gallons

Accommodations

Total Cabins: 5

Sleeps: 12

Crew Cabin: 9

Crew Berths: 9

Hull and Deck Information

Hull Material: Steel

Deck Material: Teak

Hull Configuration: Full Displacement

Exterior Designer: Francesco Paszkowski Design

Interior Designer: Studio Indigo

Engine Information

Engines: 2

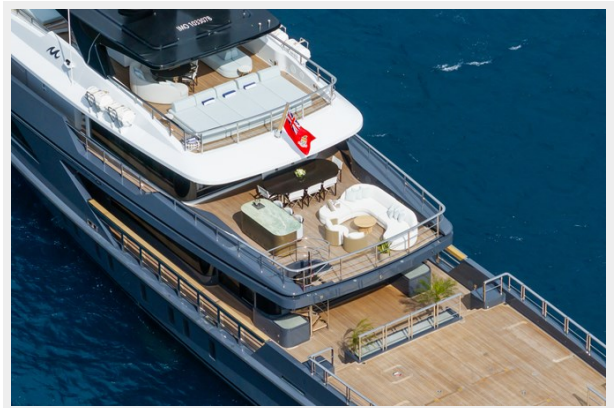
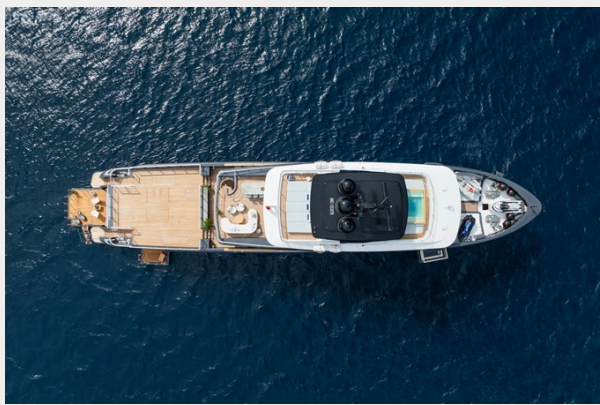
Manufacturer: CAT

Engine Type: Inboard

Fuel Type: Diesel

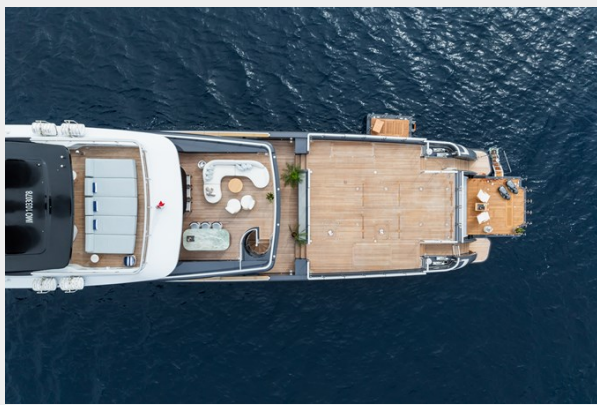
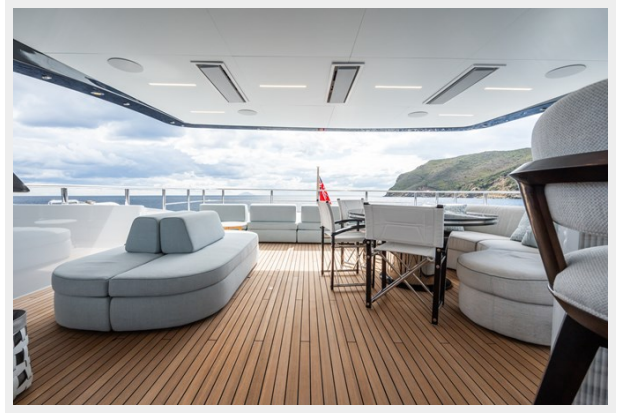
PHOTOS





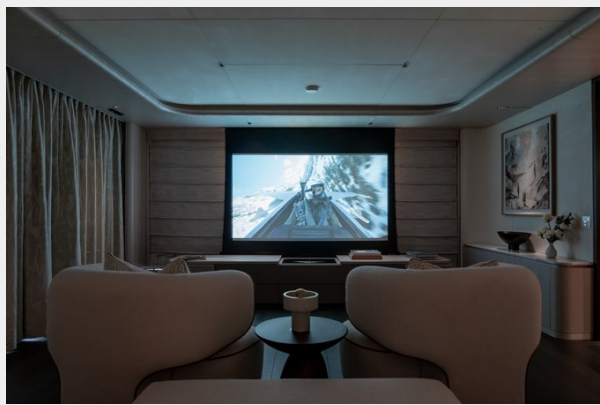




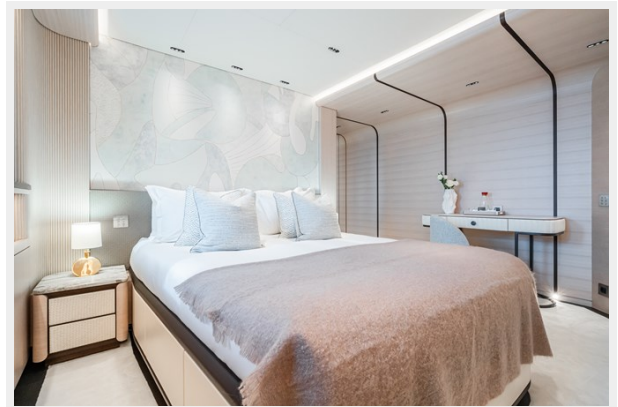


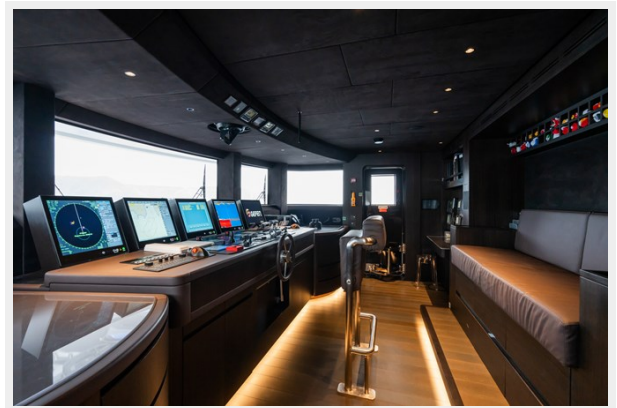














CONTACTS

Andrey Shestakov, leading yacht broker of the sales department of Shestakov Yacht Sales Inc. Shestakov Yacht Sales Inc., the official representative of the Miami/Fort Lauderdale FL headquarters.

Contact details

Email: **andrey@shestakovyachtsales.com**

Web: shestakovyachtsales.com/en/

Telephones

USA: **+1(954)274-4435**

Office hours

Monday – Saturday: **9:00 - 21:00** EDT

Sunday: **closed**

Address



Harbour Towne Marina, 850 NE 3rd St, STE 213, Dania, FL 33004