

SEAWALKER II — JEFFERSON



Builder: JEFFERSON

Year Built: 1990

Model: Aft Cabin

Price: \$86,000 USD

Location: United States

LOA: 42' (12.8mm)

Beam: 14

Min Draft: 3' 5" (1.04mm)

Max Draft: 4' (1.22mm)

Cruise Speed: 8 Knots Kts. (9 MPH)

Max Speed: 10 Knots Kts. (12 MPH)

Our experienced yacht broker, Andrey Shestakov, will help you choose and buy a yacht that best suits your needs **SEAWALKER II — JEFFERSON** from our catalogue. Presently, at **Shestakov Yacht Sales Inc.**, we have a wide variety of yachts available on our sale's list. We also work in close contact with all the big **yacht manufacturers** from all over the world.

If you would like to buy a yacht **SEAWALKER II — JEFFERSON** or would like help answering any questions concerning purchasing, selling or chartering a yacht, please call **+1(954)274-4435**

TABLE OF CONTENTS

TABLE OF CONTENTS	2
SPECIFICATIONS	5
Overview	5
Basic Information	5
Dimensions	5
Speed, Capacities and Weight	5
Accommodations	6
Hull and Deck Information	6
Engine Information	6
PHOTOS	7
DSCF5728	7
DSCF5800	7
DSCF5801	7
DSCF5802	7
DSCF5803	7
DSCF5804	7
DSCF5805	8
DSCF5806	8
DSCF5807	8
DSCF5809	8
DSCF5811	8
DSCF5812	8
DSCF5810	9
DSCF5808	9
DSCF5797	9
DSCF5799	9
DSCF5798	9
DSCF5790	9

DSCF5791	10
DSCF5792	10
DSCF5793	10
DSCF5794	10
jeff20	10
jeff21	10
jeff19	11
jeff18	11
jeff15	11
jeff16	11
jeff17	11
jeff13	11
jeff12	11
jeff11	11
jeff10	12
jeff8	12
jeff9	12
jeff7	12
jeff6	12
jeff5	12
jeff1	12
jeff2	12
jeff29	13
jeff28	13
jeff27	13
jeff26	13
jeff32	13
jeff25	13
jeff31	14

jeff30	14
jeff33	14
CONTACTS	15
Contact details	15
Telephones	15
Office hours	15
Address	15

SPECIFICATIONS

Overview

Popular Taiwan import from the 1990's combined contemporary styling with handsome teak interior, low-dearise hull with moderate beam, shallow keel delivers comfortable ride. Spacious three (3) stateroom layout with galley down, 2 forward staterooms, full beam aft main stateroom with ensuite head, large salon w/lower helm station, full beam sundeck, large walk-around decks, large flybridge with fiberglass sundeck roof for dinghy storage.

Economical Perkins 6 Cyl Diesels for longer range!

Basic Information

Category: Aft Cabin

Sub Category: Aft Cabin

Model Year: 1990

Year Built: 1990

Country: United States

Dimensions

LOA: 42' (12.8mm)

Beam: 14

Min Draft: 3' 5" (1.04mm)

Max Draft: 4' (1.22mm)

Speed, Capacities and Weight

Cruise Speed: 8 Knots Kts. (9 MPH)

Max Speed: 10 Knots Kts. (12 MPH)

Gross Tonnage: 28 Pounds

Water Capacity: 140 Gallons

Holding Tank: 40 Gal Gallons

Fuel Capacity: 300 Gal Gallons

Accommodations

Total Cabins: 3

Sleeps: 6

Total Heads: 2

Hull and Deck Information

Hull Material: Fiberglass

Hull Configuration: Semi-Displacement

Hull Designer: JEFFERSON

Interior Designer: JEFFERSON

Engine Information

Engines: 2

Manufacturer: Perkins

Engine Type: Inboard

Fuel Type: Diesel

PHOTOS

DSCF5728



DSCF5800



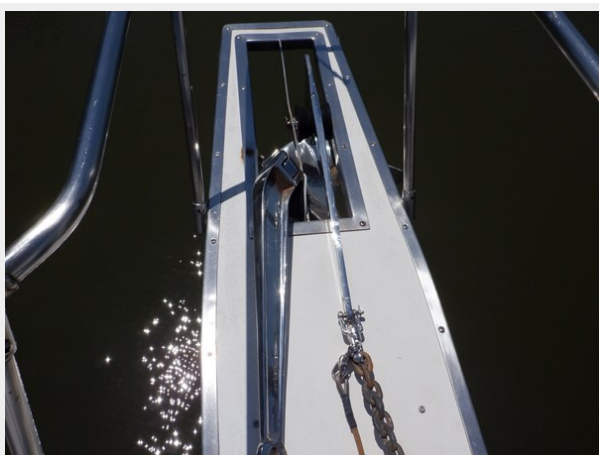
DSCF5801



DSCF5802



DSCF5803



DSCF5804



DSCF5805



DSCF5806



DSCF5807



DSCF5809



DSCF5811



DSCF5812



DSCF5810



DSCF5808



DSCF5797



DSCF5799



DSCF5798



DSCF5790



DSCF5791



DSCF5792



DSCF5793



DSCF5794



jeff20



jeff21



jeff19



jeff18



jeff15



jeff16



jeff17



jeff13



jeff12



jeff11



jeff10



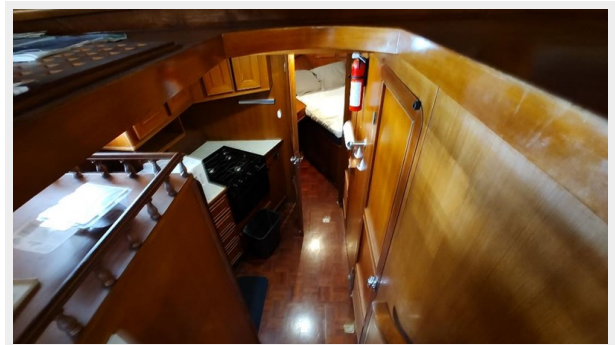
jeff8



jeff9



jeff7



jeff6



jeff5



jeff1



jeff2



jeff29



jeff28



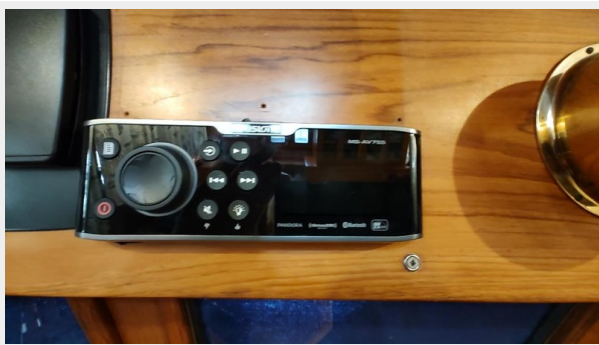
jeff27



jeff26



jeff25



jeff32



jeff31



jeff30



jeff33



CONTACTS

Andrey Shestakov, leading yacht broker of the sales department of Shestakov Yacht Sales Inc. Shestakov Yacht Sales Inc., the official representative of the Miami/Fort Lauderdale FL headquarters.

Contact details

Email: **andrey@shestakovyachtsales.com**

Web: shestakovyachtsales.com/en/

Telephones

USA: **+1(954)274-4435**

Office hours

Monday – Saturday: **9:00 - 21:00** EDT

Sunday: **closed**

Address



Harbour Towne Marina, 850 NE 3rd St, STE 213, Dania, FL 33004