

GOOD ENERGY — PRINCESS



Builder: PRINCESS

Year Built: 2006

Model: Motor Yacht

Price: €199,000 EUR

Location: Spain

LOA: 51' 10" (15.78mm)

Beam: 13.94

Max Draft: 5' 3" (1.6mm)

Cruise Speed: 30 Knots Kts. (35 MPH)

Max Speed: 35 Knots Kts. (40 MPH)

Our experienced yacht broker, Andrey Shestakov, will help you choose and buy a yacht that best suits your needs **Good Energy — PRINCESS** from **our catalogue**. Presently, at **Shestakov Yacht Sales Inc.**, we have a wide variety of yachts available on **our sale's list**. We also work in close contact with all the big **yacht manufacturers** from all over the world.

If you would like to buy a yacht **Good Energy — PRINCESS** or would like help answering any questions concerning purchasing, selling or chartering a yacht, please call **+1(954)274-4435**

TABLE OF CONTENTS

TABLE OF CONTENTS	2
SPECIFICATIONS	4
Overview	4
Basic Information	4
Dimensions	4
Speed, Capacities and Weight	4
Accommodations	4
Hull and Deck Information	5
Engine Information	5
PHOTOS	6
Princess V52	6
Princess V52	6
Princess V52	6
Princess V52	6
Princess V52	6
Princess V52	6
Princess V52	7
Princess V52	7
Princess V52	7
Princess V52	7
Princess V52	7
Princess V52	7
Princess V52	7
Princess V52	8
Princess V52	8
Princess V52	8
Princess V52	8
Princess V52	8
Princess V52	8

Princess V52	9
Princess V52	9
Princess V52	9
Princess V52	9
Princess V52	9
Princess V52	9
Princess V52	10
Princess V52	10
Princess V52	10
CONTACTS	11
Contact details	11
Telephones	11
Office hours	11
Address	11

SPECIFICATIONS

Overview

This boat has undergone a complete refit in recent months, which includes: New engines (overhaul), new coolers, new turbos, valve adjustment for both engines New batteries Engine and generator service New audio system (new radio and speakers) Generator: review of injectors (injection pump repaired) Both inverters are brand new Restoration of electrical installation and bilge piping Replacement of bilge soundproofing Repainting of the bilge Polishing of the deck New exterior upholstery New exterior vinyl Internally, everything has been renewed: interior upholstery, sofas, carpet, vinyl-covered walls.

Basic Information

Category: Motor Yacht

Sub Category: Motor Yacht

Model Year: 2006

Year Built: 2006

Country: Spain

Dimensions

LOA: 51' 10" (15.78mm)

Beam: 13.94

Max Draft: 5' 3" (1.6mm)

Speed, Capacities and Weight

Cruise Speed: 30 Knots Kts. (35 MPH) **Max Speed:** 35 Knots Kts. (40 MPH)

Water Capacity: 1200 Gallons

Fuel Capacity: 528.34 Gal Gallons

Accommodations

Total Cabins: 3

Hull and Deck Information

Hull Material: Fiberglass

Engine Information

Engines: 2

Manufacturer: Volvo

Engine Type: Inboard

Fuel Type: Diesel

PHOTOS

Princess V52



Princess V52



Princess V52



Princess V52



Princess V52



Princess V52



Princess V52



Princess V52



Princess V52



Princess V52



Princess V52



Princess V52



Princess V52



Princess V52



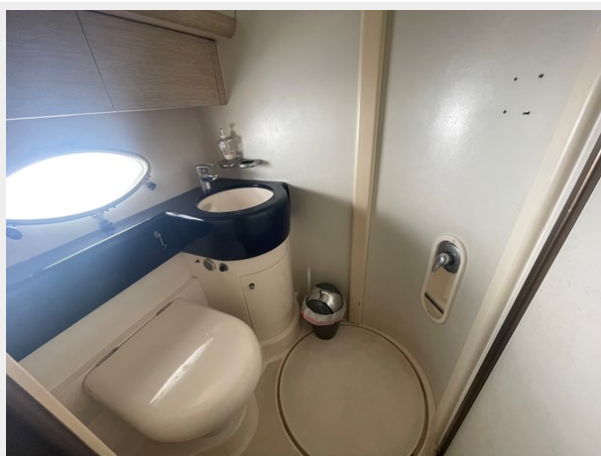
Princess V52



Princess V52



Princess V52



Princess V52



Princess V52



Princess V52



Princess V52



Princess V52



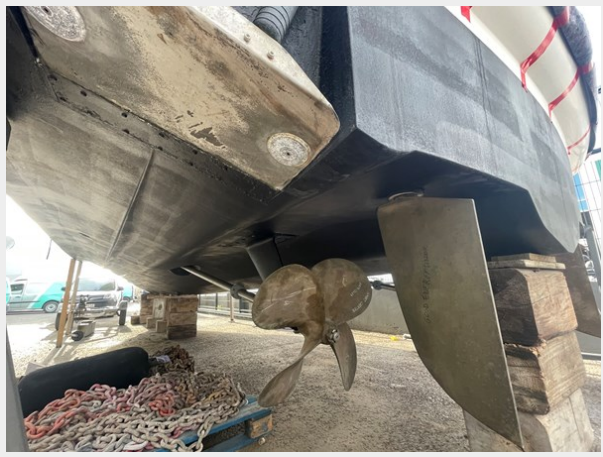
Princess V52



Princess V52



Princess V52



Princess V52



Princess V52



CONTACTS

Andrey Shestakov, leading yacht broker of the sales department of Shestakov Yacht Sales Inc. Shestakov Yacht Sales Inc., the official representative of the Miami/Fort Lauderdale FL headquarters.

Contact details

Email: **andrey@shestakovyachtsales.com**

Web: shestakovyachtsales.com/en/

Telephones

USA: **+1(954)274-4435**

Office hours

Monday – Saturday: **9:00 - 21:00** EDT

Sunday: **closed**

Address



Harbour Towne Marina, 850 NE 3rd St, STE 213, Dania, FL 33004