

NANI — CARVER



Builder: CARVER

Year Built: 2003

Model: Pilothouse

Price: \$399,999 USD

Location: United States

LOA: 53' 1" (16.18mm)

Beam: 15.33

Min Draft: 4' 9" (1.45mm)

Max Draft: 4' 9" (1.45mm)

Our experienced yacht broker, Andrey Shestakov, will help you choose and buy a yacht that best suits your needs **NANI — CARVER** from **our catalogue**. Presently, at **Shestakov Yacht Sales Inc.**, we have a wide variety of yachts available on **our sale's list**. We also work in close contact with all the big **yacht manufacturers** from all over the world.

If you would like to buy a yacht **NANI — CARVER** or would like help answering any questions concerning purchasing, selling or chartering a yacht, please call **+1(954)274-4435**

TABLE OF CONTENTS

TABLE OF CONTENTS	2
SPECIFICATIONS	5
Overview	5
Basic Information	5
Dimensions	5
Speed, Capacities and Weight	6
Accommodations	6
Hull and Deck Information	6
Engine Information	6
PHOTOS	7
1A	7
2	7
3	7
3a	7
5	8
4	8
6	8
7	8
8	9
8A	9
10	9
9	9
12	10
13	10
14	10
15	10
15A	10
16	10

18	11
17	11
18A	11
19	11
20	12
21	12
22	12
23	12
24	12
25	12
26A	13
26	13
27	13
28	13
29	14
30	14
31	14
32	14
34	14
33	14
34A	15
35	15
36	15
37	15
38	16
39	16
41	16
40	16
42	17

43	17
44	17
44A	17
45	18
46	18
47	18
48	18
49	18
50	18
51	19
52	19
53	19
54	19
55	19
56	19
58	20
57	20
59	20
60	20
CONTACTS	21
Contact details	21
Telephones	21
Office hours	21
Address	21

SPECIFICATIONS

Overview

2003 53' Carver Voyager / Sky Lounge Model -- Completely Re-done in the Last 2 Years -- "NANI" is in Great Condition Inside & Out

With newly renovated interior throughout the boat, including new flooring and carpet throughout will ensure a clean and comfortable cruise every time.

Along with many appliance upgrades such as a Thor cooktop stove, Breville microwave/air fryer, and drawer dishwasher you'll be set to stay out on the water comfortably for days at a time or long weekends. Brand new sectional couch, new refrigerator, and oversized sink set in updated white marble countertops and new fixtures adorn the living room and kitchen. As you walk down the staircase to your right you are met with the VIP bathroom which has new countertops and, a backlit smart mirror with anti-fog features. You'll walk into the shower with a household-sized rain showerhead.

Basic Information

Category: Pilothouse

Sub Category: Pilothouse

Model Year: 2003

Year Built: 2003

Country: United States

Dimensions

LOA: 53' 1" (16.18mm)

Beam: 15.33

Min Draft: 4' 9" (1.45mm)

Max Draft: 4' 9" (1.45mm)

Speed, Capacities and Weight

Water Capacity: 200 Gallons

Holding Tank: 100 Gal Gallons

Fuel Capacity: 800 Gal Gallons

Accommodations

Total Cabins: 3

Hull and Deck Information

Hull Material: Fiberglass

Engine Information

Engines: 2

Manufacturer: Volvo

Engine Type: Inboard

Fuel Type: Diesel

PHOTOS

1A



2



3



3a



4



5



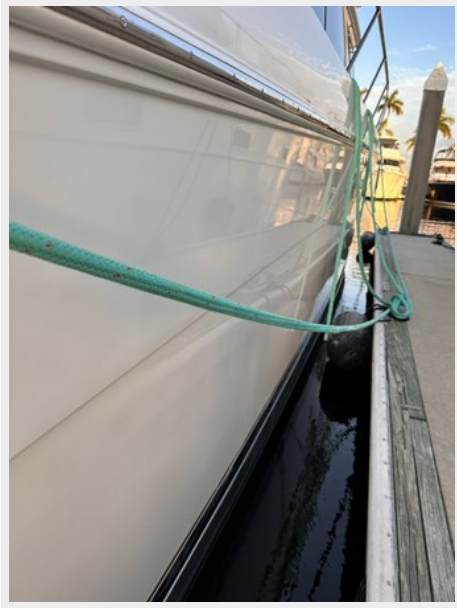
6



7



8



8A



10



9



12



13



14



15



15A



16



17



18



18A



19



20



21



22



23



24



25



26



26A



27



28



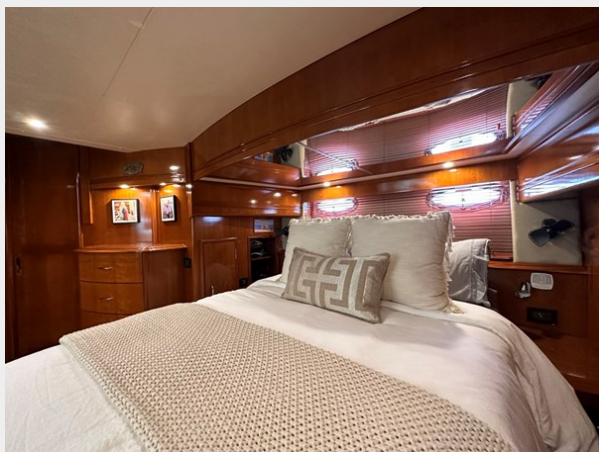
29



30



31



32



33



34



34A



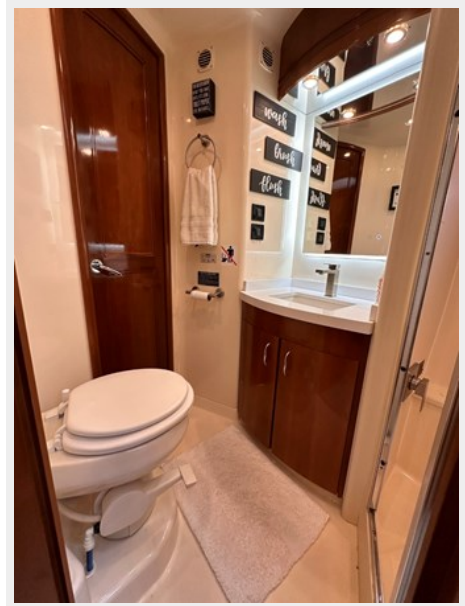
35



36



37



38



39



41



40



42



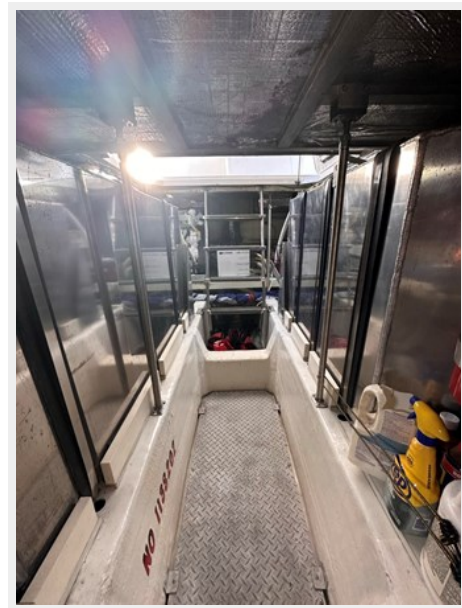
43



44



44A



45



46



47



48



49



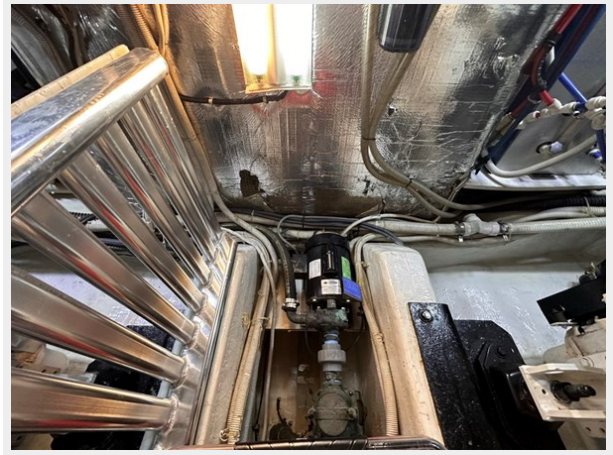
50



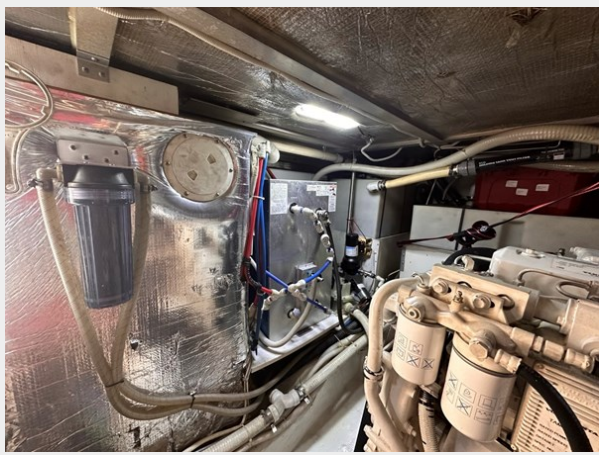
51



52



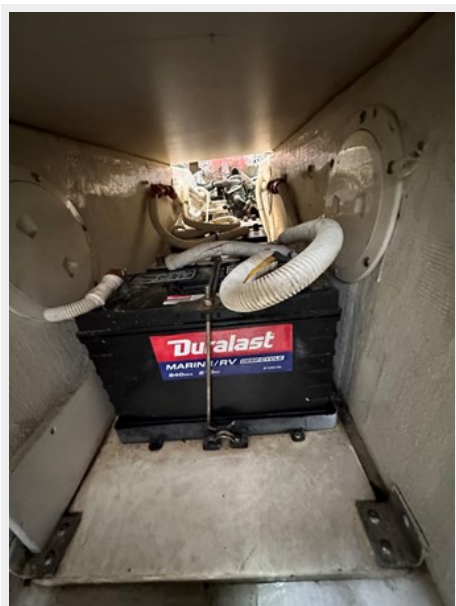
53



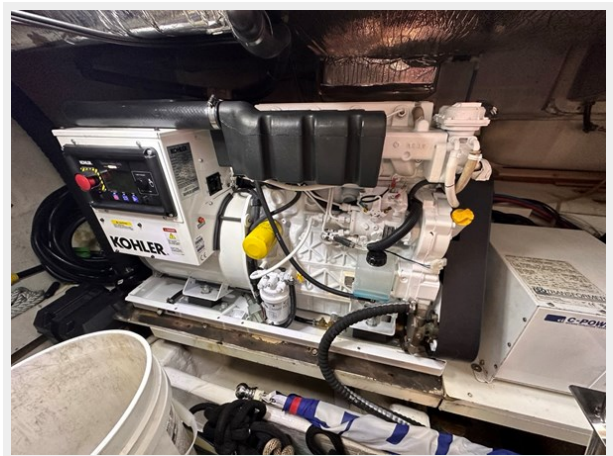
54



55



56



57



58



59



60



CONTACTS

Andrey Shestakov, leading yacht broker of the sales department of Shestakov Yacht Sales Inc. Shestakov Yacht Sales Inc., the official representative of the Miami/Fort Lauderdale FL headquarters.

Contact details

Email: **andrey@shestakovyachtsales.com**

Web: shestakovyachtsales.com/en/

Telephones

USA: **+1(954)274-4435**

Office hours

Monday – Saturday: **9:00 - 21:00** EDT

Sunday: **closed**

Address



Harbour Towne Marina, 850 NE 3rd St, STE 213, Dania, FL 33004